

## E-Cycle Washington Standard Plan 2017 Annual Report - workbook format\*



*The Washington Materials Management & Financing Authority is required to file an annual report with the Washington State Department of Ecology. This workbook contains data and information requested in order to meet compliance with WAC 173-900-800 and additional information required via passage of SHB 1498 in April of 2013. The workbook is designed to provide data and information in the format listed in the index outlined below, as specified in WAC 173-900-800 and as amended with the passage of SHB 1498.*

**\*NOTE:** *All figures and data in this report are estimates based on actual source documents including processor invoices with actual weights and charges, collector bills of lading showing estimated weights - converted to actual weights after verification through processor and transporter receipts, based on materials collected in 2017 (some collected in 2017 and processed in 2018) and other information received from collectors and processors including "collector logs" which include source and volume estimates by entity type.*

### Workbook Index

TAB  
--->

1. Total weight (in pounds) of covered electronic products (CEPs), including orphans, for the 2017 program year including documentation verifying collection and processing for:
  - a. CEP pounds collected, by type, by county
  - b. CEP recycled pounds, un-recycled residuals, and reused - by ALL program Direct Processors
  - c. Standard Plan CEP materials disposition - mass balance report
  - d. Pounds collected and processed verification - based on paid processor invoices for covered materials
  - e. Final destination(s) for the processing of CEPs and components and final destination(s) for disposal of residuals
2. Total weight of CEPs received from each nonprofit charitable organization primarily engaged in the business of reuse and resale used by the Standard Plan.
3. Total weight estimates of CEPs received in large quantities from small businesses, small governments, charities and school districts.
4. A list of collection services provided in each county and each city with a population of greater than 10,000 and the parties who operated them.
5. Processor information:
  - a. A list of all direct processors used; **(see section 1b.)**.
  - b. The weight of CEPs processed by each direct processor; **(see section 1b.)**.
  - c. A description of the processes and methods used by each direct processor to recycle the CEPs including a description of the processing and facility locations.
  - d. A compliance audit report meeting the requirements in WAC 173-900-365 for each direct processor listed in the Standard Plan.  
(Note: Links to these audit reports posted on the Ecology web site are used to meet this requirement)

## Workbook Index

TAB  
--->

6. A list of subcontractors (downstream vendors) used by each direct processor including the facility addresses. **(see section 1.e.)**
7. A brief description of the educational and promotional efforts that were undertaken to inform covered entities about where and how to reuse and recycle their CEPs.
8. The results of sampling as required in WAC 173-900-900. (sampling discontinued beginning with 2015)
9. Total weight of unwanted electronic products, electronic components, and electronics scrap that have been exported from Washington state to countries that are not members of the Organization for Economic Cooperation and Development or the European Union.
10. A list of manufacturers that are participating in the Standard Plan.
11. Documentation of work done with direct processors used by the Standard Plan to promote and encourage the design of electronic products that are less toxic and contain components that are more recyclable. Includes data on historical collected weights and units
12. Any information available regarding the reuse of CEPs through the E-Cycle Washington program.
13. Program revenue and cost.
14. Signature of the Authority.
15. Supplemental information - WMMFA volume allocation excerpt from Standard Plan.

Covered Electronic Products (CEP's) collected, including orphan products. All 2017 WMMFA transactions	CEP Pounds collected by type		CEP Pounds collected by County			CEP Pounds collected by County by CEP Type			
	2017 NET pounds by CEP type collected excluding pounds sent to reuse by collectors	Percent of total pounds by CEP type 2017	WA State County	Pounds collected 2017 excluding reuse at the collector level	Percent of total pounds by county 2017	Computers	Monitors	Televisions	TOTAL NET pounds by county - all CEP types
<b>TELEVISIONS</b>			Adams	9,154	0.0%	1,043	1,644	6,467	9,154
Household TV	25,253,312		Asotin	75,121	0.2%	1,581	9,329	64,211	75,121
School District TV	19,283		Benton	581,414	1.9%	45,718	105,230	430,466	581,414
Small Business TV	12,304		Chelan	368,506	1.2%	16,654	37,281	314,571	368,506
<b>Total TELEVISIONS</b>	<b>16,640</b>		Clallam	279,845	0.9%	14,220	24,888	240,737	279,845
	<b>25,301,539</b>	<b>81.9%</b>	Clark	2,290,822	7.4%	181,596	253,821	1,855,405	2,290,822
			Columbia	6,200	0.0%	564	878	4,758	6,200
			Cowlitz	661,516	2.1%	34,500	98,555	528,461	661,516
			Douglas	67,292	0.2%	500	2,231	64,561	67,292
			Ferry	22,413	0.1%	446	2,654	19,313	22,413
<b>MONITORS</b>			Franklin	244,768	0.8%	18,001	31,555	195,212	244,768
Household Monitors	3,232,593		Garfield	15,025	0.0%	925	1,224	12,876	15,025
School District Monitors	29,511		Grant	136,893	0.4%	3,734	18,490	114,669	136,893
Small Business Monitors	8,225		Grays Harbor	292,884	0.9%	8,009	28,929	255,946	292,884
Small Government Monitors	9,235		Island	468,903	1.5%	50,654	36,696	381,553	468,903
<b>Total MONITORS</b>	<b>3,279,564</b>	<b>10.6%</b>	Jefferson	202,576	0.7%	10,366	19,791	172,419	202,576
			King	9,688,114	31.4%	820,148	1,229,375	7,638,591	9,688,114
			Kitsap	871,499	2.8%	55,096	104,552	711,851	871,499
			Kittitas	219,382	0.7%	8,201	3,598	207,583	219,382
<b>COMPUTERS (includes laptops)</b>			Klickitat	27,233	0.1%	4,087	2,266	20,880	27,233
Household Computers	2,257,784		Lewis	422,721	1.4%	3,706	14,939	404,076	422,721
School District Computers	46,570		Lincoln	35,654	0.1%	6,775	2,472	26,407	35,654
Small Business Computers	10,743		Mason	99,040	0.3%	32	8,210	90,798	99,040
Small Government Computers	5,153		Okanogan	34,814	0.1%	3,184	5,910	25,720	34,814
<b>Total COMPUTERS</b>	<b>2,320,250</b>	<b>7.5%</b>	Pacific	100,862	0.3%	7,324	5,281	88,257	100,862
			Pend Oreille	40,640	0.1%	4,757	3,857	32,026	40,640
			Pierce	3,593,757	11.6%	278,900	364,850	2,950,007	3,593,757
			San Juan	71,720	0.2%	6,525	6,187	59,008	71,720
			Skagit	398,743	1.3%	11,320	16,465	370,958	398,743
			Skamania	53,271	0.2%	2,852	1,879	48,540	53,271
			Snohomish	3,935,697	12.7%	296,696	278,560	3,360,441	3,935,697
			Spokane	1,856,872	6.0%	187,317	208,999	1,460,556	1,856,872
			Stevens	104,409	0.3%	5,622	8,402	90,385	104,409
			Thurston	1,479,148	4.8%	86,444	139,885	1,252,819	1,479,148
			Wahkiakum	2,188	0.0%	0	0	2,188	2,188
			Walla Walla	347,541	1.1%	31,881	44,781	270,879	347,541
			Whatcom	981,024	3.2%	48,237	73,739	859,048	981,024
			Whitman	184,994	0.6%	14,635	24,100	146,259	184,994
			Yakima	628,698	2.0%	48,000	58,061	522,637	628,698
<b>Total pounds CEPs by type before reuse:</b>	<b>30,901,353</b>	<b>100%</b>		<b>30,901,353</b>	<b>100.0%</b>	<b>2,320,250</b>	<b>3,279,564</b>	<b>25,301,539</b>	<b>30,901,353</b>

REUSE AT PROCESSOR LEVEL -->

**\*439,459**

**\*439,459**

* Reuse Pounds Total Reclaim - 2017 (Total Reclaim was the only processor reporting an active reuse component to their recycling/processing operations)	
Computers	13,564
Laptops	174,396
Televisions	61,403
Monitors	190,096
<b>Total:</b>	<b>439,459</b>

**Covered electronic products (CEP's) collected and sent to each approved processor. All 2017 WMMFA transactions by all processors.**

	ACE METAL COMPANY	E-WASTE LLC	ECS REFINING	EWC GROUP	ELECTRONIC REC INT (ERI)	TOTAL RECLAIM	SIMON METALS - TACOMA	SIMON METALS - VANCOUVER	TOTAL POUNDS - ALL PROCESSORS	
All quantities in net pounds- based on accruals of collectons in 2017	Qty	Qty	Qty	Qty	Qty	Qty	Qty	Qty	Qty	
CEP program pounds sent to, and COLLECTED by, each processor in total	5,360,447	3,292,146	2,012,712	3,427,917	64,524	6,867,489	5,677,290	4,198,828	30,901,353	
	SUMMARY Breakout of Re-used, Recycled, and Non-recycled Materials by Processor									
CEP pounds RECYCLED by each processor and on hand awaiting processing	5,297,579	3,291,896	1,937,043	3,427,917	53,624	6,428,030	5,402,307	4,082,218	29,920,614	96.83%
*CEP pounds processor sent to REUSE through refurbishment or re-sale	0	0	0	0	0	439,459	0	0	439,459	1.42%
NON-RECYCLED residuals including wood, etc. (details in sec. 1.c.)	62,868	250	75,669	0	10,900	0	274,983	116,610	541,280	1.75%
TOTAL pounds recycled, reused, and in process	5,360,447	3,292,146	2,012,712	3,427,917	64,524	6,867,489	5,677,290	4,198,828	30,901,353	100.0%

\*NOTE: The WMMFA estimates (See section 12. Re-use) that 399,800 pounds of collected CEP's were put to re-use by collectors and 439,459 pounds to reuse at processor level

WMMFA processors CEP mass balance report - required per SHB 1498 eff: July 28, 2013

Plan Year : 2017 Total of all processors under contract with the WMMFA

INBOUND: total plan pounds 2017 calendar year	Computers	Laptops	E-Readers	E-Tablets	Monitors	Televisions	OTHER (non-covered)	TOTAL
	A	B	C	D	E	F	G	sum A-G
TOTAL PLAN pounds collected ----->	2,176,394	143,856	negligible	negligible	3,279,564	25,301,539	negligible	30,901,353

**OUTBOUND: at Dec. 31 2017 for calendar year 2017**

Pounds by commodity type:

**RECOVERED / RECYCLED / IN PROCESS**

CRT GLASS	12,170,378
CIRCUIT BOARDS	2,366,695
BATTERIES	21,422
MERCURY LAMPS (based on actual and estimated weights of CCFLs in flat panel devices)	5,858
PLASTIC	5,594,339
METALS	6,633,987
WOOD	1,277,097
CEP's in storage awaiting processing	1,386,446
CEP's in transit awaiting downstream processing	464,392
<b>TOTAL RECOVERED / RECYCLED/ IN PROCESS:</b>	<b>29,920,614</b>

**REUSED**

COMPUTERS - (Desktop or integrated units)	13,564
LAPTOPS	174,396
TELEVISIONS	61,403
MONITORS	190,096
PARTS - SWAPPED OUT TO WORKING UNIT	0
OTHER: _____	0
<b>TOTAL REUSED:</b>	<b>439,459</b>

**UNRECYCLED RESIDUAL (to landfill)**

WOOD	478,162
NON-RECYCLABLE PLASTIC	10,531
OTHER: Broken mirror from DLP and Projection TV	52,587
<b>TOTAL RESIDUAL:</b>	<b>541,280</b>

<b>TOTAL RECOVERED, RECYCLED, REUSED, RESIDUAL:</b>	<b>30,901,353</b>
---	-------------------

SECTION 1 MASS BALANCE REPORTING:

NOTE: Total INBOUND pounds must equal total OUTBOUND / IN PROCESS pounds

**Covered Electronic Products (CEP's) collected for recycling by the WMMFA in 2017 from non-profit charitable organizations primarily engaged in re-use through re-sale.**

All net pounds collected and paid for in 2017 - total - weights verified at processing

Does NOT include pounds of working or refurbished devices a charity collected as part of the program and sent to reuse (see section 12 for reuse estimates at collector level)

<b>Charity Name</b>	<b>CEP Pounds</b>
ADAMS COUNTY DEVELOP DISABILITIES	9,154
ANACORTES AKTION CLUB	60,734
ARC OF SW WASHINGTON	5,081
DESERET INDUSTRIES-SHORELINE	110,505
DESERET INDUSTRIES - FEDERAL WAY	173,447
GOODWILL EVERETT (Seattle Goodwill)	3,093,726
GOODWILL HAWKS PRAIRIE TACOMA HOGUM BAY ROAD (Tacoma Goodwill)	598,425
GOODWILL MULLEN LANDFILL TACOMA (Tacoma Goodwill)	397,359
GOODWILL PASCO	768,229
GOODWILL SEATTLE (Seattle Goodwill)	2,516,007
GOODWILL SPOKANE	1,656,749
GOODWILL TACOMA (Tacoma Goodwill)	5,084,875
GOODWILL VANCOUVER	1,384,056
GOODWILL WENATCHEE	109,567
HABITAT FOR HUMANITY - ELLENSBURG	8,066
INTERCONNECTION.ORG	395,238
NEW LIFE THRIFT STORE #1	12,342
NORTHWEST CENTER INDUSTRY	101,872
SALVATION ARMY ABERDEEN	17,059
SALVATION ARMY ARC SEATTLE	200,994
SALVATION ARMY BELLINGHAM	27,946
SALVATION ARMY SPOKANE VALLEY	66,634
SALVATION ARMY WENATCHEE	101,548
SALVATION ARMY YAKIMA	64,716
ST.VINCENT DE PAUL-BREMERTON	66,839
ST.VINCENT DE PAUL-LYNNWOOD	18,385
ST.VINCENT DE PAUL-SEATTLE	74,501
ST.VINCENT DE PAUL-TACOMA	96,470
ST.VINCENT DE PAUL - MONROE	56,785
STANWOOD CAMANO KIWANIS - STANWOOD	29,085
SUNNYSIDE CHRISTIAN THRIFT STORE	34,501
UNION GOSPEL MISSION - YAKIMA	48,053
VISITING NURSES THRIFT - CHEHALIS	93,982
YWCA STORE - WENATCHEE	4,315
<b>Total Pounds collected for recycling after deducting reuse pounds:</b>	<b>17,487,245</b>

# Total pounds received in large quantities from entities other than households - 2017

Large quantities are defined as any drop off, pick up, or event where the entity provided approximately 1 pallet or more CEP's

This is a complete listing of all "covered entities" that utilized E-Cycle Washington since start up. Many of them submit items on an on-going basis.

CEP TYPE	Qty in Lbs. 2017 Total	Schools and School Districts generating large quantities		Small governments, charities (other than charities registered as collectors) , small business, and events		
		SCHOOL DISTRICTS		EVENTS	MISCELLANEOUS COVERED ENTITIES	
<b>TELEVISIONS</b>		Anacortes	Ocasta	E-1st Security Bank - Bothell	Aboda	LCR
School District	19,283	Arlington	Orcas	E-1st Security Bank - Capitol Hill	Seattle Rubbish Removal (SRR)	LCS Network Consultants
Small Business	12,304	Auburn	Orcas Island	E-1st Security Bank - Edmonds	3D Systems	LD
Small Gov.	16,640	Bainbridge	Overlake	E-1st Security Bank - Lynnwood	5th Avenue Theater	LDC
<b>Total TELEVISIONS</b>	<b>48,227</b>	Bellevue	Pasco	E-1st Security Bank - Poulsbo	7 Hills Camp	Lente RV Repair
		Bellingham	Pe Ell	E-1st Security Bank - Puyallup	A&G	LFS Inc
		Bellinham Christian	Peninsula	E-1st Security Bank - Redmond	AA - Its	Lighthouse Mission
		Bethel	Port Angles	E-24 Hour Fitness	AAA	Living Green Tech
		Blain	Pullman	E-ABAM Building - Federal Way	AAA Auto Wrecking	Living Hope Church
<b>MONITORS</b>		Burlington	Puyallup	E-Active Voice Bldg	Aarons	Lloyd's Electronics
School Dist	29,511	Burlington - Edison	Quincy	E-Adobe	Accepting LLC	LRA
Small Business	8,225	Camas	Renton	E-Alexis Hotel	Accuduct	Luminterra
Small Gov.	9,235	Cascade	Richland	E-Ballard Church	Accurate Insights	LWS
<b>Total MONITORS</b>	<b>46,971</b>	Castle Rock	Ridgefield	E-BECU Everett	Accurate Mfg.	Lynden Door Inc
		Central Kitsa[	Rochester	E-BECU Everett	Achtunina	M&M Solutions
		Chewelah	Sedro Woolley	E-BECU Federal Way	Adam & Dinkin	Madrona Dental Care
		Christian	Selah	E-BECU Federal Way	Adesa Seattle	Mag Hifi
		Colfax	Sequim	E-BECU Tukwila	Adopt A Road	Magic Carpet Auto Transport
		Colton	Snohomish	E-BECU Tukwila	Advanced Labels NW	Maverick Label
<b>COMPUTERS</b>		Concrete	South Widbey	E-Bellevue Church of Christ	Aecopetla Apts	Max Tech
School District	46,570	Dayton	Stanwood Camano	E-Bentall Kennedy - Summit REIT	Agrimax Intl	May Valley Council
Small Business	10,743	Eastmone	Stevenson Carson	E-Bingen Community Pride	AHHS	MBPP
Small Gov.	5,153	Edmonds	Tacoma	E-Bingen Community Pride	AHHS Housing	MBS Property
<b>Total COMPUTERS</b>	<b>62,466</b>	Epiphany	Tahoma	E-Boeing - Auburn	Aircraft Cabin Sys	McKinley
		Everett	Toppenish	E-Boeing Airport Way	Alaska Maritime	MCR
		Evergreen	Toutle	E-Boeing DC - EWC Event	Alderwood Safe Storage	MEA
<b>TOTAL</b>	<b>157,664</b>	Ferndale	Vashon	E-Boeing Developmental Center	Alderwood Water & Wastewater	Meda List
(NOT including pounds sent to re-use)		Fife	Vashon Island	E-Boeing Duamish	All New Glass	Megapath Inc.

	Franklin Pierce	Waitsburg	E-Boeing Fredrickson	All Tech	Mehrer Drywall
	Granite Falls	Wapata	E-Boeing Georgetown	Alpha Tech	Memorial Community Church
	Granger	Woodland	E-Boeing Safety Day - EWC Event	Alrite	Men's Health Housing
<b>SMALL GOVERNMENT</b>	Highline	Yelm Community	E-Bothell United Methodist	Altran	MFD
<b>CITIES</b>	Hoquim	University Place	E-Boy Scouts of America #221	Always Affordable	MGM Solutions
Algona	Icolph	Kelso	E-Bridal Show - Tacoma Dome	AMACS	Micro R12
Arlington	Issaquah	Kent	E-Broadview United Church-Sea	American Building	Microloans NW
Bothell	Kelso	LA Conner	E-CAC Real Estate Mgmt	Ames International	Midway Plywood
Burien	Kent	Lake Stevens	E-CAC Real Estate Mgmt-Plaza	Angels	Miller Laine Properties
Carnation	La Conner	Lakota	E-CAC Real Estate Mgmt-Plaza East	Architextures	Minuteman Press
Duvall	Lake Stevens	Lake Washington	E-CAC Real Estate Mgmt-US Bank	Argosy Cruises	Modern Digital
Edmonds	Lakota	Lake Wood	E-Capital Mall Olympia	Arlington Adventist Church	Moe Made Inc
Enumclaw	Lake Washington	Longview	E-CB Richard Ellis - Atrium Bldg	Arlington Dry Kilns	Moldrite
Everett	Lake Wood	Lopez Island	E-CB Richard Ellis - Symetra Fin.	Aseptico Inc	Moore Hotel
Everson	Longview	Yelm Community	E-CB Richard Ellis - Symetra Fin.	Asphalt Patch Systems	Moose Steel
Federal Way	Lopez Island	University Place	E-CB Richard Ellis-One Bellevue	Assistance League	Moto Plex
Granite Falls	Lynden	Steilacoom	E-Christ the King Luthern Church	Auburn Oxford	Mountain Coin
Kent	<b>SCHOOLS</b>		E-Christan Ministries-Shoreline	Auburn Valley Group	Mountain Pacific Bank
Lynden	Arlington High School	Nooksack Middle	E-City of Arlington	Auburn Work Crew	Mr Fix - it
Lynnwood	Bellingham Tech	NW Indian College	E-City of Bingen	Audio Control	MTR
Mukilteo	Burlington School	NW University	E-City of Bothell -Seattle Times	B of A	Mukilteo Water
North Bend	Canyon Creek Elem	Penny Creek Elem	E-City of Duvall	Bainbridge Rotary Club	Mukleshoot Indian Tribe
Randle	Carl Samburg Elem	Pioneer High	E-City of Enumclaw	Ballard Tech	Murray Kahn
Snoqualmie	Carriage Crest Elem	Seattle Pacific University	E-City of Federal Way	BAN	N.W. Kidney
Sammamish	Cascadia Montessori School	Seattle Prep School	E-City of Granite Falls	Bargain Town	NCGTKC Churh
Sea - Tac	Cathcart Elem	Seattle University	E-City of North Bend	BDAP	North Bham Group Church
Tukwila	Cavalero Middle	Silver First Elem	E-City of Puyallup	Beach Dr Shores	North Shore Senior Center
Issaquah	Cedar Heights Middle	Skagit Valley College	E-City of Randle	Beacon Pub	North Wastrom Fire & R
Seattle	Charter College	Snohom. Dutch Hill Elem	E-City of Sammamish	Bele Com	Northshore Christian
	Chrysalis School	Spokane Public School	E-City of SeaTac	Bellegrove	Northshore Endo
<b>COUNTIES</b>	Discovery Elem	St Francis School	E-City of Snoqualmie	Bellevue Dwntwn Assoc.	Northshore Sheet Metal
Chelan	Edmonds Comm College	St George School	E-City of Tukwila	Berry Enterprises	Northwest Regional Council
Clallam	Federal Way Co-Op Pre	St Louise School	E-City of Winlock	Berry Plastics	NPC
Columbia	Federal Way Public	St Luis School	E-City Recycling	Bham Yacht Club	NSA Church
Douglas	Glazier Park Elem	St Martin University	E-Clise Properties - Active Voice	Big Brother Big Sister	NSS
Kittitas	Glen Ridge Elem	St Mary Magdelan School	E-Clise Properties - Denny Bldg	Big Change	NSWW



Lewis  
Yakima

Granite Falls High	St. Alphinsus School	E-Clise Properties - Securities Bldg	BIP	NW CENTER
Holy Rosary School	Starlake Elem	E-Clise Properties - Sixth & Lenora	Birdson AFH	NW Control Sys
Inglemore High	Sumner H.S.	E-CMC Icos Biologics	Blackpoint IT	NW Family Church
Kenmore Jr High	Sunrise Elem	E-Columbia Center	Blucap Fit	NW Grating
Liberty High	Tekoa Grade School	E-Crista Ministries	BN Building	NW Home Improvements
Lindberg High	Tillicum Middle	E-Denny Building	BNG Properties	NW Kidney Ctr
Lynden Christian	University of Avionics	E-Earth Day - Green Depot TR	Bobs Heating	NW Tax Specialists
Lynden Middle	University of WA - Bothell	E-Edmonds Lutheran Church	Boeing employees day	NW Territorial Mint
Meadow Glade Elem	University of WA - Seattle	E-Emulex	Boilermaster	NW Vision
Monroe High	WA School for the Blind	E-Everett Financial Center	Borgard Consulting	Oakwood World Wide
Monte Cristo Elem	Woodmoor Elem	E-Evergreen Christian Fellowship	Bowles Manuf	OHL
Mountain Way Elem	Zion Academy	E-Ewaste LLC Sand Point Metro	Boys & Girls Club	Orkin Pest Control
Mt Baker High		E-Fauntleroy United Church	BP Church	Our Lady of the Lake
		E-FCA Soccer - Snapdoodle Toys	Bralco Metals	Outlet Collections
		E-Federal Way - Pavillions	Broadmoor Golf Club	P.A.W.S.
		E-Federal Way - City Recycling	Brownlie Evans	P.S. Removal
		E-Fire District 27	Browns Electronic	Pace Staffing
		E-Fruit Valley Neighborhood Assoc	BRP Seattle	Pacific Building
		E-Gettney Island	Brunswick Lanes	Pacific Surrey
		E-Grocery Outlet - Lynnwood	Building Blocks	Pacific Underwriters
		E-GVA Kidder Mathews	Building Changes	Packay Inc.
		E-Highland Gated Community	C&R Electric	Paradise Lakes
		E-Intel Farmers Market	CAD-Based Solution	Parkway
		E-Jackson Federal Bldg - Seattle	Campbell, Dille & Smith	Parkway Apts
		E-JSH Properties - 1000 Denny	Camwood Counseling Serv	Pavi Davis Restoration
		E-JSH Properties - 1st & Stewart	Canyon Lumber Co.	PC Management
		E-JSH Properties - Market Place	CAPS	Peckay
		E-JSH Properties - Waterfront	Car Toys	Perey Law
		E-Kelly PTSA	Carillon Properties	Performance PT
		E-Key Bank - Auburn	Carpinito Brothers	Perk Shore
		E-Kirkland Congregational Church	Cascade Computer	Permec-bilt
		E-Kirkland United Church of Christ	Cascade Vista	Pete's Auto Repair
		E-Klahanie Homeowners Comm-Iss	Cascade Yarns	Petrocon
		E-Lake Stevens Round-up	Cascadia Dentristy	PHG
		E-Landon-Susan Ins Agency	Cast Cutter	Philips Laurel Health Care
		E-Lewis County Solid Waste	CD Services	Philips Ultrasound
		E-LK. Stevens - Spring Cleaning Day	CDL Recycling	Pier Systems

E-Lynnwood Top Foods	CDR	Pinnacle Electric
E-Magnolia Church	Cedarstrand Rentals	PLC Multipoint
E-Magnolia United Church-Seattle	Centers Collision	Plymouth Housing
E-McClain Insurance	Central Area Youth	Plywood Supply
E-McDonald McGarry Insurance	Ceva	PMT Solutions
E-Mercer Island Church of Christ	CH Technologies	PNCC
E-Mercer Island Olympic TR	Charles Right Academy	PNL
E-Mercer Island SBK Event	Chelan Café	PNTA
E-Mercer Island Wandermer	Childrens Home Society	Port of Everett
E-Metropolitan Market	Childrens School of Excellence	Powell Development
E-Metropolitan Market - Kirkland	Childrens Therapy Center	Precision Engines
E-Metropolitan Market - Queen A	Chimney Techniques	Precision Graphics
E-Metropolitan Market - Sand Pt	Christian Faith Center	Precision Iron Works
E-Metropolitan Market West Sea	CHS Cenex	Premier Storage
E-Mukilteo YMCA	CHS Inc.	Prestige Care of Tacoma
E-Neighborhood Rec-Klahanie	City of Seattle ILL DUMP P	Print & Copy Factory
E-Neighborhood Rec-Shoreline	Clark Co Skill Center	Printing Plus
E-New & Again Thrift Shop	Clearwater Spa	Pro Realty
E-Newcastle Earth Day	Closet Factory	Protingent
E-North Bend	CMC Biologics	Providence
E-North Help Line - Food Bank	CMC ICOS Biologics	PRS Group
E-Olympic Environmental	CMIT of Everett	PSBC
E-Pacific Power Batteries	CMIT Solutions	PSF Mechanical
E-Pacific Power Batteries-Safeway	CMMS	PSM LLC
E-Packwood collection event	Cogdill Nichols Law	PYI Inc
E-Parkside Neighborhood Assoc	Columbia City	Quality Moving
E-Philips Healthcare - Bothell	Community Food Co-Op	Radiant Technology
E-Philips Oral Healthcare	Community Psychiatric Clinic	Radio Frame Network
E-Precor	Community Transit	Rama Foundation
E-Prince Of Peach Luthern Church	Compass Health	Rane Corp.
E-Puget Sound Energy - Tacoma	Computer Concept	RC Enterprises
E-Puget Sound Energy - Bothell	Computer For Kids	RCA
E-Puget Sound Energy - Summit	Computer Referrals	Red Point Structure
E-Quadrant Park I-5 Corp	Computer Rentals	Redmond Ridge Golf
E-Quincy Valley Lions Club	Computer Tooter	Reliable Man Cleaning
E-Ranier Community Center	Computer's For Kids	Restore of WA
E-Redeemers Luthern Church	Consolidated	Ride Motorsports

E-Regence Blue Shield	Construction Group Int.	Rife Care
E-Samammish Young Life/Discov	Continental Village Apts	River of Life
E-Sandpoint Metropolitan Market	Core Furniture	River of Life Fellowship
E-Schnitzer West	Corliss Resources	Rodda Paint
E-Securities Bank of Washington	Coyote Guns	Rolls Royce - N. Amer.
E-Securities Bldg	CR Janitorial	Ronald McDonald House
E-Shoreline CC	CREAM Computer Don.	Ross Display
E-SnoCo Together	Creative Workspace	RPNN
E-Snoqualmie Ridge Homeowners	Creed Technology	Run Studios
E-Snoqualmie Tribe	Creekside Church	Rural Metro
E-SolarFest	Crista Ministries	S View Metro Parks
E-St Johns Episcopal Ch-Kirkland	Crown Film	S&R Unlimited
E-St Johns Medical Center	CSC	Sadis Filmworks
E-St Stephen the Martyr-Renton	CSMI	SAK
E-St. George Parish	CTK Bellingham	Samish Tribe
E-St. Gobain Containers	Cully Inc	Sand Point Country Club
E-St. Mark's Cathedral	Cutting Edge D.	SANG
E-Stock Pot	CVA Apartments	Sasco Electric
E-Stoel Rives Law Firm	D Square Energy	Sea Pac Homes
E-Tacoma Mall Office	D&G Insulation	Seattle Cancer Care Alliance
E-Tukwila Financial Center	Day & Nite	Seattle Children's Museum
E-United Church of Christ	Deau's Photography	Seattle Computers
E-US Postal Service - Everett	DeCacro & Roberts	Seattle Gameworks
E-Valley View Silver Crest	Deeny Construction	Seattle Housing Authority
E-Value Village	Dialup USA Inc	Seattle Paint Supply
E-Vashon Island collection event	DOJ	Second Hand Hewitt
E-Watson Furniture	Dr Hutton	Selway Machine
E-Whole Foods	Dump It	Senior Serv of Snohomish
E-Windermere - West Sound	Dynamic Language	Service Alternatives
E-Windermere Bellevue	E3RA	Shaq
E-Windermere Everett	Eagle Storage	Signature AV
E-Windermere Madison Park	Eastside Carstar	Silvermark Insurance
E-Windermere Mercer Island	Eastside Foursquare Church	Silvertips
E-Windermere Redmond	Eastside Prep	Silverly IT
E-Windermere Woodinville	ECA	Single Source
E-Woodinville Alliance Church	ECAC	Site Specific Services
E-Woodland Park Zoo	ECAMP.LLC.	Skagit PUD #1

E-Work Force Dev Center-Mukilteo	Eco Movers	SLC
E-Wright Runstad	Ecova	Smart Run Sys Inc
E-Yacolt Clean-up Event	ECS	Smith Cooper NW
E-YMCA	EDASC	Smith Gardens
E-Young Life	Edmonds Community College	Snap Fitness
	EFR	Snohomish County PUD
	Elcon	Snohomish County Red Cross
	Element	Snohomish Fire Distric 1st
	Elliott Bay Book Co	Snohomish Health District
	Emerald City Pizza	Snyder Law Firm
	Emerald City Tech	Soccer West
	EMP	Soltech
	Empower Up	Sonoma Villero Condos
	Engineering Development	Sound Christian Fellowship
	Engineering Solutions	Sound Light
	Entrance Controls	Sound Mental Health
	ER Enterprize	Sound Prescriptions LLC
	ETI	South Coast In Homes
	Everett DT Storage	South County Hauling
	Everett Golf and Country Club	SPD
	Everett Housing Authority	Specialty Coin
	Everett Silvertips	Speet Rum Sign
	Everett Steel	Spruce Hotel
	Evergreen Pet Supply	St. Vincent De Paul
	Every Day Fitness	Stafford Press
	Express Furniture	Staiger Roofing
	F That Junk	Star of the Sea
	Faith Christian Fellowship	State Roofing
	FCI	Steamworks
	Federal Way Public Schools	Stevens Pass
	Ferndale Redi-Mix	Stevenson Advertising
	FFF Inc	STG Presents
	Finishing Touch	Sudden Valley
	First Due Movers	SUMC
	Fisher's Creek Neighbor Ass.	Summit @ Snoqualmie
	Fleet Pride	Summit Rett
	Flying Food	Sundview

Focus North America	Sunrise Services
Focus the Nation	Supply Tech
Forest Concepts	Supply Technologies
Formost Fuji	Swinerton Bldr
Foss Care	Synsor Corporation
Foundation Bank	Tacoma Nursing & Rehab
Fred Hutch Research Center	Team Tahoma
Friendly Village	Tech 1
FSGS Service	Tech Help
Furhaven	Tech Screen
Future of Flight Foundation	Technical Advantage Inc.
FWUMC	Tedesco
G3 Develop	Teen Challenge
GBA	Tel Data Systems
Gesanko Chocolate	Terra Dynamic
Gesney Auto	Tex Green
Giffin Tech	The Bank of Washington
Git R Dumped	The City Church
Gless LLC	The Truss Co.
Global Tech Plastics	Thryers Refrigeration
GMS Architect Group	Timberland Bank
Gold Finch	Tippro Inc
Golden Dolphin	Torah Day School of Seattle
Goldsmith & Assoc	Totem Lake Motel
Got Junk	Town Place Suites
Greenpoint Tech	TPS Service
GT Fed Wan	TRAXX
Guidant Financial	Trilogy International
Habitat For Humanity	Trinity Lutheran Church
Halmark Appraisel	Triumph Structures
Hampton Inn & Suites	Truck Shop
Happy Hauler	TURBRO
Harbor Pointe Gold	TWH Enterprises
Harris Electric, Inc.	Tyco IS
Harsch	UGM
Heart & Home	UHI
Helping Hands	Uniback

Hewitt Secondhand	Universal Frieght Forwalder
HH Housing	UR Stenson
Hillside Church	US Transmission
Hirt's Truck, Scrap & Rec.	USPS
HKP Architechs	Valley Buick GME
Hoet	Valley Place
Holiday Group	Valmont / WCE
Holland Transfer	Vanderly & Co
Home RX	Vashon Tech Support
Honey Cap Mortgage	Vector Ind
Honeycutt Manufacturing	Vesta Properties
Hopelink	Visno Vipro
Hubers Custom Building	Vuetura
Husky Truck	W.C.R.
Hydraulic Industries	W/B Housing
Icicle	Wareware
IDL	Washington Cathedral
IDL Precision	Waste Management
IMI - Precision	Watertown Hotel
Ind'l Coating & Sealants	WBS
Inspur USA	WCDC
Intava	Werner O-Meara & Co
Interfaith Church	Wesco
IS Tech LLC	Wesiot Tech
ISO Media	Wesley Homes
Itek Energy	West Wind Motel
Jane Way Apts	Westek
JC Enterprises Constr.	Western Engineering
JIT Mfg Inc	Whatcom Counseling
JMC Cabinets	Whatcom Hire
John Buchan Homes	Whatcom Humane Society
John L. Scott	White Glove Junk Removal
Johnson & Shute	Wildcard Games
JSI	Willow Technology
Jubilee Reach	Windermere
Junk B Gone	Windermere Real Estate
Junk Boys	Workforce Snohomish

Junk King	World Affairs
Just Junk It	World Vision
K.I.C.R.	Worldmark - Camlin
Kaman Eng	WRC
KCAS	Wrecking Ball
KDH	WSGA
Keep It Clean Rec	WSWW
Kelly Insurance	XCS
Kent Nazarene	XKL LLC
Kern's Funeral Home	Xpertise Computer Solutions
Ketchikau	YMCA
Key Maintenance	Youth Care
King Co E-911 Program	YWCA Seattle
King Co Parks	
King County Flood Relief	
King County Housing Auth-Sea	
King County Library	
King Machine LLC	
Kirkland Cinemas LLC	
Kirkland RV	
KLB Construction	
Koomo Con	
Kvlshan Vet Hospital	

## WMMFA Ecycle registered WA Collection sites throughout 2017

<i>Collector Site Name</i>	<i>Operating Organization</i>	<i>EPR Number</i>	<i>County</i>
Experience Merchandise Thrift Store	Adams County Developmental Disabilities	EPR00547	Adams
CEP Recycle Asotin Co.	HHH	EPR00471	Asotin
Clayton-Ward Company Kennewick	Clayton-Ward Company	EPR00526	Benton
Clayton-Ward Company Richland	Clayton-Ward Company	EPR00526	Benton
Goodwill 7-11 Donation Center	Goodwill Industries of the Columbia	EPR00871	Benton
Goodwill Albertsons Donation Center	Goodwill Industries of the Columbia	EPR00871	Benton
Goodwill Columbia Center Mall Donation Center	Goodwill Industries of the Columbia	EPR00871	Benton
Goodwill East Kennewick	Goodwill Industries of the Columbia	EPR00871	Benton
Goodwill Fred Meyer Donation Center	Goodwill Industries of the Columbia	EPR00871	Benton
Goodwill Kennewick Store	Goodwill Industries of the Columbia	EPR00871	Benton
Goodwill Plaza Donation Center	Goodwill Industries of the Columbia	EPR00871	Benton
Goodwill Richland	Goodwill Industries of the Columbia	EPR00871	Benton
Goodwill Westgate Shopping Center Donation Center	Goodwill Industries of the Columbia	EPR00871	Benton
Goodwill WR Bombing Range	Goodwill Industries of the Columbia	EPR00871	Benton
Horn Rapids Sanitary Landfill	City of Richland - Landfill	EPR00490	Benton
Stay Tan West	Stay Tan West	EPR00542	Benton
City of Chelan Recycle Center	City of Chelan	EPR00514	Chelan
Goodwill Valley College Donation Center	Goodwill Industries of the Columbia	EPR00871	Chelan
Goodwill Wenatchee Store	Goodwill Industries of the Columbia	EPR00871	Chelan
Pacific Power Batteries Wenatchee	Pacific Power Batteries	EPR00967	Chelan
Salvation Army Wenatchee	The Salvation Army Seattle DHQ	EPR00470	Chelan
Ywca Store	YWCA NCW	EPR01064	Chelan
Goodwill Port Angeles Store	Goodwill of the Olympics and Rainier Region	EPR00290	Clallam
Goodwill Sequim Store	Goodwill of the Olympics and Rainier Region	EPR00290	Clallam
Born Alliance	Born Alliance	EPR01210	Clark
Central Transfer and Recycling Center	Columbia Resource Company	EPR00754	Clark
Goodwill - 205 and Mill Plain Donation Center	Columbia Willamette Goodwill	EPR00343	Clark
Goodwill - Big Al's Donation Center	Columbia Willamette Goodwill	EPR00343	Clark
Goodwill 162nd Donations Express	Columbia Willamette Goodwill	EPR00343	Clark
Goodwill 38th and Main	Columbia Willamette Goodwill	EPR00343	Clark
Goodwill Andresen Marketplace Express	Columbia Willamette Goodwill	EPR00343	Clark
Goodwill Battleground Store	Columbia Willamette Goodwill	EPR00343	Clark
Goodwill Cascade Park Donation Center	Columbia Willamette Goodwill	EPR00343	Clark
Goodwill Felida Country Store Donation Center	Columbia Willamette Goodwill	EPR00343	Clark
Goodwill Fishers Landing Store	Columbia Willamette Goodwill	EPR00343	Clark
Goodwill Hazel Dell Store	Columbia Willamette Goodwill	EPR00343	Clark
Goodwill Northgate Shopping Center	Columbia Willamette Goodwill	EPR00343	Clark
Goodwill Orchards Donation Center	Columbia Willamette Goodwill	EPR00343	Clark
Goodwill Salmon Creek Store	Columbia Willamette Goodwill	EPR00343	Clark
Goodwill The Glen	Columbia Willamette Goodwill	EPR00343	Clark
Goodwill Vancouver Outlet	Columbia Willamette Goodwill	EPR00343	Clark



<i>Collector Site Name</i>	<i>Operating Organization</i>	<i>EPR Number</i>	<i>County</i>
Goodwill Vancouver Store	Columbia Willamette Goodwill	EPR00343	Clark
Goodwill Washougal Donation Center	Columbia Willamette Goodwill	EPR00343	Clark
The Arc of Southwest Washington	Arc of Southwest Washington	EPR01138	Clark
Washougal Transfer Station	Columbia Resource Company	EPR00754	Clark
West Vancouver Materials Recovery Center	Columbia Resource Company	EPR00754	Clark
Columbia County Transfer Station	Columbia County Public Works	EPR01028	Columbia
Goodwill Longview Store	Goodwill of the Olympics and Rainier Region	EPR00290	Cowlitz
Waste Control Recycling	Waste Control Recycling	EPR00443	Cowlitz
Goodwill East Wenatchee Store	Inland Northwest Goodwill	EPR00334	Douglas
Inchelium Community Center	Colville Confederated Tribes	EPR00578	Ferry
Keller Community Center	Colville Confederated Tribes	EPR00578	Ferry
Torboy Transfer Station	Ferry County Waste Management	EPR00487	Ferry
Goodwill Pasco Outlet	Goodwill Industries of the Columbia	EPR00871	Franklin
Goodwill Pasco Road 68	Goodwill Industries of the Columbia	EPR00871	Franklin
Goodwill Pasco Store	Goodwill Industries of the Columbia	EPR00871	Franklin
Tommy's Steel & Salvage	Tommy's Steel & Salvage	EPR00519	Franklin
CEP Recycle Garfield County	HHH	EPR00471	Garfield
CDSI Transfer & Recycle	Consolidated Disposal Service, Inc.	EPR00279	Grant
Consolidated Disposal Service	Consolidated Disposal Service, Inc.	EPR00279	Grant
Goodwill Moses Lake Store	Inland Northwest Goodwill	EPR00334	Grant
Goodwill Aberdeen Store	Goodwill of the Olympics and Rainier Region	EPR00290	Grays Harbor
Pay More Recycle and Salvage Inc. Aberdeen	Pay More Recycle and Salvage	EPR01202	Grays Harbor
Salvation Army Aberdeen	The Salvation Army Seattle DHQ	EPR00470	Grays Harbor
Waste Connections Inc dba Aberdeen Sanitation	Waste Connections Inc dba Aberdeen Sanit	EPR00522	Grays Harbor
Camano Island Transfer Station & Recycle Park	Island County Public Works SW Division	EPR00530	Island
Coupeville Island Recycling	Island Recycling	EPR00517	Island
Freeland Island Recycling	Island Recycling	EPR00517	Island
North Whidbey Drop Box Station	Island County Public Works SW Division	EPR00530	Island
Goodwill Port Townsend Store	Goodwill of the Olympics and Rainier Region	EPR00290	Jefferson
The Recycle Center	Skookum Environmental Service	EPR00267	Jefferson
3R Technology	3R Technology	EPR00370	King
Busby Junk Removal	Busby Junk Removal, LLC	EPR00466	King
Deseret Industries - Federal Way	Deseret Industries	EPR00546	King
Deseret Industries - Shoreline	Deseret Industries	EPR00546	King
EcoLights Northwest	Total Reclaim, Inc.	EPR00544	King
Enumclaw Recyclers	Enumclaw Recyclers	EPR00834	King
E-Recycle Mercer Island Site	E-Recycle	EPR00774	King
EWC Group, Inc	EWC Group, Inc	EPR00472	King
Friendly Earth International Inc.	Friendly Earth International	EPR00824	King
Goodwill Auburn Store	Goodwill of the Olympics and Rainier Region	EPR00290	King
Goodwill Ballard Donation Center	Seattle Goodwill	EPR00310	King
Goodwill Ballard Store	Seattle Goodwill	EPR00310	King
Goodwill Burien Store	Seattle Goodwill	EPR00310	King
Goodwill Capitol Hill	Seattle Goodwill	EPR00310	King

<i>Collector Site Name</i>	<i>Operating Organization</i>	<i>EPR Number</i>	<i>County</i>
Goodwill Des Moines Store	Goodwill of the Olympics and Rainier Region	EPR00290	King
Goodwill Federal Way Store	Goodwill of the Olympics and Rainier Region	EPR00290	King
Goodwill Greenwood Donation Center	Seattle Goodwill	EPR00310	King
Goodwill Interbay Donation Center @ Whole Foods	Seattle Goodwill	EPR00310	King
Goodwill Issaquah Donation Center	Seattle Goodwill	EPR00310	King
Goodwill Juanita Store	Seattle Goodwill	EPR00310	King
Goodwill Kent Outlet Store	Goodwill of the Olympics and Rainier Region	EPR00290	King
Goodwill Kent Store	Goodwill of the Olympics and Rainier Region	EPR00290	King
Goodwill Maple Valley Store	Goodwill of the Olympics and Rainier Region	EPR00290	King
Goodwill Northgate Donation Center	Seattle Goodwill	EPR00310	King
Goodwill Poulsbo Donation Center	Seattle Goodwill	EPR00310	King
Goodwill Ravenna Donation Center	Seattle Goodwill	EPR00310	King
Goodwill Redmond (Bellevue) Store	Seattle Goodwill	EPR00310	King
Goodwill Redmond Ridge Donation Center	Seattle Goodwill	EPR00310	King
Goodwill Renton Store	Seattle Goodwill	EPR00310	King
Goodwill Sammamish Donation Center	Seattle Goodwill	EPR00310	King
Goodwill Seattle Store	Seattle Goodwill	EPR00310	King
Goodwill Shoreline Store	Seattle Goodwill	EPR00310	King
Goodwill Snoqualmie Ridge	Seattle Goodwill	EPR00310	King
Goodwill South Lake Union	Seattle Goodwill	EPR00310	King
Goodwill Southcenter Store	Seattle Goodwill	EPR00310	King
Goodwill Totem Lake Donation Center	Seattle Goodwill	EPR00310	King
Goodwill University District Store Donation Center	Seattle Goodwill	EPR00310	King
Goodwill West Seattle Donation Center	Seattle Goodwill	EPR00310	King
Goodwill Woodinville Donation Center	Seattle Goodwill	EPR00310	King
Goodwill Woodinville P&R Donation Center	Seattle Goodwill	EPR00310	King
InterConnection Computer Reuse	InterConnection Computer Reuse	EPR00369	King
Northwest Center Truck at Albertsons	Northwest Center	EPR00411	King
Northwest Center Truck at Albertson's Bellevue	Northwest Center	EPR00411	King
Northwest Center Truck at Carnation IGA Grocery	Northwest Center	EPR00411	King
Northwest Center Truck at Cottage Lake Safeway	Northwest Center	EPR00411	King
Northwest Center Truck at Pine Lake QFC	Northwest Center	EPR00411	King
Northwest Center Truck at QFC North Bend	Northwest Center	EPR00411	King
Northwest Center Truck at Redmond QFC	Northwest Center	EPR00411	King
Northwest Truck at Madrona Grocery Outlet	Northwest Center	EPR00411	King
NW Center Truck at Queen Anne Diamond Parking	Northwest Center	EPR00411	King
NW Center Truck at Walmart Overflow Parking South	Northwest Center	EPR00411	King
NW Center Truck at West Seattle Key Bank Parking	Northwest Center	EPR00411	King
NW Center Truck at Wilderness Village QFC	Northwest Center	EPR00411	King
NW Center Truck in Wedgwood	Northwest Center	EPR00411	King
NWC Truck at Interbay Whole Foods Market	Northwest Center	EPR00411	King
Pacific Power Batteries of Kirkland	Pacific Power Batteries of Kirkland	EPR01224	King
PC Recycle - Bellevue	PC Recycle	EPR00220	King
PC Recycle - Bothell	PC Recycle	EPR00220	King

<i>Collector Site Name</i>	<i>Operating Organization</i>	<i>EPR Number</i>	<i>County</i>
PC Recycle - Bridle Trails Shopping Center	PC Recycle	EPR00220	King
PC Recycle - Woodinville	PC Recycle	EPR00220	King
Planet USA, LLC	Planet USA, LLC	EPR00975	King
RE-PC Seattle	RE-PC	EPR00426	King
RE-PC Tukwila	RE-PC	EPR00426	King
Salvation Army Auburn Donation Site	The Salvation Army Seattle ARC	EPR00543	King
Salvation Army Ballard Fred Meyer Donation Site	The Salvation Army Seattle ARC	EPR00543	King
Salvation Army Burien Donation Site	The Salvation Army Seattle ARC	EPR00543	King
Salvation Army Federal Way Site	The Salvation Army Seattle ARC	EPR00543	King
Salvation Army Kent Donation Site	The Salvation Army Seattle ARC	EPR00543	King
Salvation Army Redmond Donation Site	The Salvation Army Seattle ARC	EPR00543	King
Salvation Army Renton Donation Site	The Salvation Army Seattle ARC	EPR00543	King
Salvation Army Renton Fred Meyer Donation Center	The Salvation Army Seattle ARC	EPR00543	King
Salvation Army Seattle ARC	The Salvation Army Seattle ARC	EPR00543	King
Salvation Army Shoreline Donation Site	The Salvation Army Seattle ARC	EPR00543	King
Seattle Computers	Seattle Computers	EPR01233	King
Slavation Army Family Store	The Salvation Army Seattle ARC	EPR00543	King
St Vincent de Paul 1st Ave S	St Vincent de Paul Seattle/King County	EPR00525	King
St Vincent de Paul 4th Ave S	St Vincent de Paul Seattle/King County	EPR00525	King
St Vincent de Paul Aurora Ave N	St Vincent de Paul Seattle/King County	EPR00525	King
St Vincent de Paul Bothell Way NE	St Vincent de Paul Seattle/King County	EPR00525	King
St Vincent de Paul Kent	St Vincent de Paul Seattle/King County	EPR00525	King
St Vincent de Paul Renton	St Vincent de Paul Seattle/King County	EPR00525	King
Total Reclaim 6th Ave Site	Total Reclaim, Inc.	EPR00544	King
UpTeKK	UpTekk	EPR00491	King
Value Village Burien	Savers Recycling, Inc.	EPR00484	King
Value Village Issaquah	Savers Recycling, Inc.	EPR00484	King
Value Village Kent	Savers Recycling, Inc.	EPR00484	King
Value Village Kirkland	Savers Recycling, Inc.	EPR00484	King
Value Village Redmond	Savers Recycling, Inc.	EPR00484	King
Value Village Seattle 15th Ave NW	Savers Recycling, Inc.	EPR00484	King
Value Village Seattle Lake City Way	Savers Recycling, Inc.	EPR00484	King
Value Village Tukwila	Savers Recycling, Inc.	EPR00484	King
Value Village Woodinville	Savers Recycling, Inc.	EPR00484	King
VIDEO ONLY - Bellevue	Video Only, Inc.	EPR00855	King
VIDEO ONLY - Federal Way	Video Only, Inc.	EPR00855	King
VIDEO ONLY - TUKWILA	Video Only, Inc.	EPR00855	King
Bainbridge Island Recycling & Garbage Facility	Bainbridge Disposal	EPR00374	Kitsap
Bremerton St. Vincent dePaul	St Vincent de Paul Bremerton	EPR00494	Kitsap
Goodwill Bainbridge Island Don. Center	Seattle Goodwill	EPR00310	Kitsap
Goodwill Bremerton Store	Seattle Goodwill	EPR00310	Kitsap
Goodwill Port Orchard Store	Seattle Goodwill	EPR00310	Kitsap
Goodwill Silverdale Store	Seattle Goodwill	EPR00310	Kitsap
Olympic View Transfer Station	Waste Management of Washington	EPR00264	Kitsap

<i>Collector Site Name</i>	<i>Operating Organization</i>	<i>EPR Number</i>	<i>County</i>
Peninsula All Shred	All Shred	EPR00502	Kitsap
Goodwill Ellensburg Store	Goodwill of the Olympics and Rainier Region	EPR00290	Kittitas
Kittitas Valley Recycling - Ellensburg	Kittitas Valley Recycling	EPR00515	Kittitas
Republic Services Div 4178 - Goldendale Transfer	Republic Services Div 4178	EPR00482	Klickitat
Goodwill Centralia Store	Goodwill of the Olympics and Rainier Region	EPR00290	Lewis
Tiger Mountain Technologies	Tiger Mountain Technologies	EPR00707	Lewis
Visiting Nurses Thrift Store	Visiting Nurses Foundation	EPR00937	Lewis
Visiting Nurses Thrift Store	Visiting Nurses Foundation	EPR00937	Lewis
Lincoln County Transfer Station	Lincoln County Transfer Station	EPR00367	Lincoln
Goodwill Shelton Store	Goodwill of the Olympics and Rainier Region	EPR00290	Mason
Pay More Recycle and Salvage Inc Shelton	Pay More Recycle and Salvage	EPR01202	Mason
Green Okanogan	Green Okanogan Recycle	EPR00572	Okanogan
Methow Recycles	Methow Recycles	EPR00298	Okanogan
Nespelem Recycling Center	Colville Confederated Tribes	EPR00578	Okanogan
Omak Community Center	Colville Confederated Tribes	EPR00578	Okanogan
Pacific Solid Waste Disposal	Pacific Solid Waste Disposal Inc	EPR00371	Pacific
Royal Heights Transfer Station	Royal Heights Transfer Station	EPR00488	Pacific
Ione Transfer Station	Pend Oreille Co Public Works	EPR00404	Pend Oreille
Newport Transfer Station	Pend Oreille Co Public Works	EPR00404	Pend Oreille
Usk Transfer Station	Pend Oreille Co Public Works	EPR00404	Pend Oreille
Affordable Computer Service	Affordable Computer Service	EPR00418	Pierce
Goodwill 38th Street Store	Goodwill of the Olympics and Rainier Region	EPR00290	Pierce
Goodwill 6th Ave Plaza Store	Goodwill of the Olympics and Rainier Region	EPR00290	Pierce
Goodwill 72nd Street Store	Goodwill of the Olympics and Rainier Region	EPR00290	Pierce
Goodwill Bonney Lake Store	Goodwill of the Olympics and Rainier Region	EPR00290	Pierce
Goodwill Gig Harbor Store	Goodwill of the Olympics and Rainier Region	EPR00290	Pierce
Goodwill Graham Donation Station	Goodwill of the Olympics and Rainier Region	EPR00290	Pierce
Goodwill Lakewood Store	Goodwill of the Olympics and Rainier Region	EPR00290	Pierce
Goodwill Purdy Transfer Donation Station	Goodwill of the Olympics and Rainier Region	EPR00290	Pierce
Goodwill Puyallup River Road Store	Goodwill of the Olympics and Rainier Region	EPR00290	Pierce
Goodwill South Hill Store	Goodwill of the Olympics and Rainier Region	EPR00290	Pierce
Goodwill Spanaway Store	Goodwill of the Olympics and Rainier Region	EPR00290	Pierce
Goodwill Tacoma Landfill Recycle Donation Station	Goodwill of the Olympics and Rainier Region	EPR00290	Pierce
Goodwill Tacoma Outlet Store	Goodwill of the Olympics and Rainier Region	EPR00290	Pierce
Goodwill Tacoma South Store	Goodwill of the Olympics and Rainier Region	EPR00290	Pierce
Goodwill University Place Refuse/Recycle Station	Goodwill of the Olympics and Rainier Region	EPR00290	Pierce
Green PC	Green PC	EPR00520	Pierce
Joint Base Lewis-McChord Recycle Center	LeMay Inc	EPR00529	Pierce
McChord Recycling Center	LeMay Inc	EPR00529	Pierce
Recycling Resources	Recycling Resources	EPR00877	Pierce
Salvation Army Bonney Lake Donation Site	The Salvation Army Seattle ARC	EPR00543	Pierce
Salvation Army Puyallup Donation Site	The Salvation Army Seattle ARC	EPR00543	Pierce
St. Vincent de Paul S. 56th St.	St Vincent de Paul Tacoma	EPR00561	Pierce
St. Vincent de Paul Summit	St Vincent de Paul Tacoma	EPR00561	Pierce

<i>Collector Site Name</i>	<i>Operating Organization</i>	<i>EPR Number</i>	<i>County</i>
Value Village Puyallup	Savers Recycling, Inc.	EPR00484	Pierce
Value Village University Place	Savers Recycling, Inc.	EPR00484	Pierce
VIDEO ONLY - Tacoma	Video Only, Inc.	EPR00855	Pierce
Lopez Solid Waste Disposal District	Lopez Solid Waste Disposal District	EPR01022	San Juan
Orcas Recycling Services	Orcas Recycling Services	EPR00512	San Juan
San Juan Transfer Station	Lautenbach Industries LLC	EPR01239	San Juan
Anacortes Aktion Club	Anacortes Aktion Club	EPR00523	Skagit
Goodwill Anacortes Donation Center	Seattle Goodwill	EPR00310	Skagit
Goodwill Mount Vernon Store	Seattle Goodwill	EPR00310	Skagit
Pacific Power Batteries Mount Vernon	Pacific Power Batteries	EPR00967	Skagit
Sedro-Woolley City Recycling Facility	City of Sedro-Woolley	EPR00324	Skagit
Value Village Mt Vernon	Savers Recycling, Inc.	EPR00484	Skagit
Mt. Pleasant Transfer Facility	Skamania County Solid Waste Division	EPR00358	Skamania
Stevenson Transfer Facility	Skamania County Solid Waste Division	EPR00358	Skamania
Underwood Transfer Facility	Skamania County Solid Waste Division	EPR00358	Skamania
Ace Metal Company and Mukilteo Recycling Center	Ace Metal Company	EPR00557	Snohomish
Appliance Recycling Outlet	Appliance Recycling Outlet	EPR00486	Snohomish
Eman computer Care	Eman Computer Care and Data Recovery	EPR00052	Snohomish
Eman Computer Care	Eman Computer Care and Data Recovery	EPR00052	Snohomish
EMAN DATA RECOVERY	Eman Computer Care and Data Recovery	EPR00052	Snohomish
E-Waste, LLC - Lynnwood	E-Waste LLC	EPR00445	Snohomish
Goodwill Edmonds Store	Seattle Goodwill	EPR00310	Snohomish
Goodwill Everett Store	Seattle Goodwill	EPR00310	Snohomish
Goodwill Lynnwood Store	Seattle Goodwill	EPR00310	Snohomish
Goodwill Martha Lake Donation Center	Seattle Goodwill	EPR00310	Snohomish
Goodwill Marysville Store	Seattle Goodwill	EPR00310	Snohomish
Goodwill Monroe Store	Seattle Goodwill	EPR00310	Snohomish
Goodwill Snohomish Donation Center	Seattle Goodwill	EPR00310	Snohomish
Goodwill South Everett Store	Seattle Goodwill	EPR00310	Snohomish
Kiwanis Recycle	Stanwood Camano Kiwanis	EPR01059	Snohomish
Northwest Center Mukilteo	Northwest Center	EPR00411	Snohomish
Northwest Center Truck at Lake Stevens Albertsons	Northwest Center	EPR00411	Snohomish
NW Center Truck at Thrasher's Corner Shopping Cnt.	Northwest Center	EPR00411	Snohomish
Pacific Power Batteries Everett	Pacific Power Batteries	EPR00967	Snohomish
Pacific Power Batteries Marysville	Pacific Power Batteries	EPR00967	Snohomish
Pacific Power Batteries Mountlake Terrace	Pacific Power Batteries	EPR00967	Snohomish
Salvation Army Lynnwood Donation Center	The Salvation Army Seattle ARC	EPR00543	Snohomish
Salvation Army Marysville Donation Site	The Salvation Army Seattle ARC	EPR00543	Snohomish
Salvation Army Mill Creek Donation Site	The Salvation Army Seattle ARC	EPR00543	Snohomish
St. Vincent dePaul Everett	St Vincent de Paul Northsound	EPR00560	Snohomish
St. Vincent dePaul Monroe	St Vincent de Paul Northsound	EPR00560	Snohomish
Truck On Call	Truck On Call	EPR00528	Snohomish
Value Village Edmonds	Savers Recycling, Inc.	EPR00484	Snohomish
Value Village Everett	Savers Recycling, Inc.	EPR00484	Snohomish

<i>Collector Site Name</i>	<i>Operating Organization</i>	<i>EPR Number</i>	<i>County</i>
Value Village Lynwood	Savers Recycling, Inc.	EPR00484	Snohomish
Value Village Marysville	Savers Recycling, Inc.	EPR00484	Snohomish
VIDEO ONLY - Lynnwood	Video Only, Inc.	EPR00855	Snohomish
APB AUTO PARTS	Auto Parts Barn, Inc.	EPR00904	Spokane
DeVries Business Services	DeVries Business Services	EPR00914	Spokane
Goodwill Airway Heights Donor Service Center	Inland Northwest Goodwill	EPR00334	Spokane
Goodwill Cheney Donor Service Center	Inland Northwest Goodwill	EPR00334	Spokane
Goodwill Dishman-Appleway Donor Service Center	Inland Northwest Goodwill	EPR00334	Spokane
Goodwill Downtown Spokane Plant/Dock Donation Cent	Inland Northwest Goodwill	EPR00334	Spokane
Goodwill Francis Donor Service Center	Inland Northwest Goodwill	EPR00334	Spokane
Goodwill Mt. Spokane Donor Service Center	Inland Northwest Goodwill	EPR00334	Spokane
Goodwill North Division Y Donor Service Center	Inland Northwest Goodwill	EPR00334	Spokane
Goodwill North Nevada Store	Inland Northwest Goodwill	EPR00334	Spokane
Goodwill NW Blvd Store	Inland Northwest Goodwill	EPR00334	Spokane
Goodwill NW Spokane Donor Service Center	Inland Northwest Goodwill	EPR00334	Spokane
Goodwill South Hill 57th Donor Service Center	Inland Northwest Goodwill	EPR00334	Spokane
Goodwill South Hill Store Donor Service Center	Inland Northwest Goodwill	EPR00334	Spokane
Goodwill South Pines Donor Service Center	Inland Northwest Goodwill	EPR00334	Spokane
Goodwill Spokane Valley Store	Inland Northwest Goodwill	EPR00334	Spokane
Goodwill Spokane Warehouse/Outlet	Inland Northwest Goodwill	EPR00334	Spokane
Goodwill Veradale Donor Service Center	Inland Northwest Goodwill	EPR00334	Spokane
Goodwill Wandermere Donor Service Center	Inland Northwest Goodwill	EPR00334	Spokane
Inland ReTech	Electronic Recycling, LLC dba Inland ReT	EPR00335	Spokane
Recycle Techs	Recycle Techs	EPR00478	Spokane
Recycle Techs North	Recycle Techs	EPR00478	Spokane
Salvation Army Spokane	The Salvation Army Seattle DHQ	EPR00470	Spokane
Salvation Army Spokane Valley	The Salvation Army Seattle DHQ	EPR00470	Spokane
Value Village Spokane E Sprague	Savers Recycling, Inc.	EPR00484	Spokane
Value Village Spokane W Boone	Savers Recycling, Inc.	EPR00484	Spokane
VIDEO ONLY - Spokane	Video Only, Inc.	EPR00855	Spokane
Goodwill Colville Store	Inland Northwest Goodwill	EPR00334	Stevens
4th Dimension Computers	4th Dimension Computer	EPR00002	Thurston
Goodwill Hawks Prairie Landfill/Recycle Station	Goodwill of the Olympics and Rainier Region	EPR00290	Thurston
Goodwill Lacey Store	Goodwill of the Olympics and Rainier Region	EPR00290	Thurston
Goodwill Olympia Outlet	Goodwill of the Olympics and Rainier Region	EPR00290	Thurston
Goodwill Olympia Store	Goodwill of the Olympics and Rainier Region	EPR00290	Thurston
Goodwill South Lacey Store	Goodwill of the Olympics and Rainier Region	EPR00290	Thurston
Goodwill Yelm Store	Goodwill of the Olympics and Rainier Region	EPR00290	Thurston
MARS LLC	Mars, LLC	EPR01013	Thurston
PC Repair One - The Computer Shop	The Computer Shop	EPR01242	Thurston
State Surplus Tumwater Site	Department of Enterprise Services / State Surplus	EPR00480	Thurston
Value Village Lacey	Savers Recycling, Inc.	EPR00484	Thurston
Stanley's Sanitary Service	Stanley's Sanitary Service LLC	EPR00493	Wahkiakum

<i>Collector Site Name</i>	<i>Operating Organization</i>	<i>EPR Number</i>	<i>County</i>
CEP Recycle Walla Walla	HHH	EPR00471	Walla Walla
Goodwill Walla Walla Store	Goodwill Industries of the Columbia	EPR00871	Walla Walla
Goodwill WW Country Store	Goodwill Industries of the Columbia	EPR00871	Walla Walla
Lillie Rice Center, Inc	Lillie Rice Center, Inc	EPR01223	Walla Walla
Walla Walla Recycling	Walla Walla Recycling Inc	EPR00496	Walla Walla
1PC LLC	1PC LLC	EPR01251	Whatcom
Goodwill Bellingham Store	Seattle Goodwill	EPR00310	Whatcom
Recycling & Disposal Services, Inc.	Recycling & Disposal Services, Inc.	EPR00510	Whatcom
Safe And Easy Recycling - Bellingham	Safe And Easy Recycling	EPR00397	Whatcom
Safe And Easy Recycling -Lynden/North County	Safe And Easy Recycling	EPR00397	Whatcom
Salvation Army Bellingham	The Salvation Army Seattle DHQ	EPR00470	Whatcom
Value Village Bellingham	Savers Recycling, Inc.	EPR00484	Whatcom
Goodwill Pullman Donor Service Center	Inland Northwest Goodwill	EPR00334	Whitman
Pullman Disposal Shop	Pullman Disposal Service, Inc.	EPR00299	Whitman
Washington State University	Washington State University	EPR01058	Whitman
Goodwill Selah Store	Goodwill of the Olympics and Rainier Region	EPR00290	Yakima
Goodwill Sunnyside Store	Goodwill Industries of the Columbia	EPR00871	Yakima
Goodwill Union Gap Store	Goodwill of the Olympics and Rainier Region	EPR00290	Yakima
Goodwill Yakima Store	Goodwill of the Olympics and Rainier Region	EPR00290	Yakima
Salvation Army Union Gap	The Salvation Army Seattle DHQ	EPR00470	Yakima
Salvation Army Yakima	The Salvation Army Seattle DHQ	EPR00470	Yakima
Sunnyside Christian Thrift Shop	Sunnyside Christian Thrift Shop	EPR00566	Yakima
Union Gospel Mission Yakima	Union Gospel Mission Yakima	EPR00568	Yakima
Yakima Waste Systems - Granger	Yakima Waste Systems, Inc.	EPR00463	Yakima
Yakima Waste Systems - Yakima	Yakima Waste Systems, Inc.	EPR00463	Yakima

## Processors participating in WMMFA Standard Plan - Description of processes and methods Reference to compliance audits 2017

The information listed below represents a summary of processor locations and processing methods of each of the approved processors participating in the Standard Plan. Processes listed include all registered processors utilized for any quantity of materials in 2017 with the data provided based on most recent audits. For the most current compliance audit report see "Compliance audit reports for direct processors of covered electronics" at the link below

[E-Cycle Registered Processor Audits Link](#)

Ace Metal Company, 11110 Mukilteo Speedway #202, Mukilteo, WA 98275		James Yoo	(425)493-6802
Material Of Concern	Recycling Process	Fate of Recycling Process	End of life processing-Destination Country
CRT Glass	Removed from CEP by hand dismantling separated panel and funnel, all metal removed	Glass to glass, all materials are reused in new glass product	India/Spain/Netherlands
Circuit Boards	Removed from CEP by hand dismantling	Precious metals recovery	Japan
Batteries	Hand removed from CEP and sorted by type	Metal Recovery	USA
Mercury Devices	Hand removed from CEP managed as universal waste	Retort Mercury Recovery	USA
Non-Materials of Concern	Recycling Process	Fate of Recycling Process	Destination
Steel	Hand removed from CEP and sorted	Metal Recovery	USA
Plastics	Hand removed from CEP and sorted	Plastic Recovery	China
Insulated Wire	Hand removed from CEP and sorted	Metal Recovery	USA
Aluminum	Hand removed from CEP and sorted	Metal Recovery	USA



EWC Group, 410 Andover Park E., Tukwila, WA 98188		James Piek		(206)767-9950	
Material Of Concern	Recycling Process	Fate of Recycling Process	End of life processing-Destination Country		
CRT Glass	Manually removed from CEP; separate panels, metals, and all other residuals	Glass to glass; all materials reused in new glass products	U.S./Mexico /India		
Circuit Boards	Manually removed from CEP	Primary smelter for precious metal recovery	Korea / Japan / Belgium		
Batteries	Manually removed from CEP and sorted by type	Metal Recovery	U.S.		
Mercury Devices	Manually removed from CEP and managed as Universal Waste	Mercury recovery	U.S. / Canada		
Non-Materials of Concern	Recycling Process	Fate of Recycling Process	Destination		
Steel	Manually removed from CEP	Metal recovery	U.S.		
Plastics	Manually removed from CEP	Plastic Recovery	China / Canada / U.S.		
Insulated Wire	Manually removed from CEP	Metal recovery	China / Korea / U.S.		

E-WASTE LLC, 12424 Beverly Park Rd Suite A-4, Lynnwood, WA 98036		Sam or Paul Kim		(425)239-4118	
Material Of Concern	Recycling Process	Fate of Recycling Process	End of life processing-Destination Country		
CRT Glass	Removed whole from CEP	Glass to glass recycling. All materials are used in new CRTs.	USA		
Circuit Boards	Removed from CEP by hand-dismantling	Primary smelter recovery metals	USA		
Batteries	Hand-removed from CEP, sorted by type.	Metal Recovery	USA		
Mercury Containing Lamps	Hand-removed from CEP by hand dismantling, managed as universal waste.	Mercury Recovery	USA		
Non-Materials of Concern	Recycling Process	Fate of Recycling Process	Destination		
Steel	Removed from CEP by hand-dismantling.	Metal Recovery	USA		
Plastics	Removed from CEP by hand-dismantling.	Plastic Recovery	USA		
Insulated wire	Removed from CEP by hand-dismantling.	Metal Recovery	USA		
Scrap Wood	Removed from CEP by hand-dismantling.	Solid Waste Landfill (via Transfer Station)	USA		
Aluminum	Removed from CEP by hand-dismantling.	Metal Recovery	USA		

Material Of Concern	Recycling Process	Fate of Recycling Process	End of life processing-Destination Country
CPU's and selected Electronic Devices	Most electronic devices are dismantled, however, some are evaluated for reuse and/or refurbishment	Downstream recyclers of post dismantled and post shredded commodities are discussed below.	See Below USA
CRTs	Most CRT's are dismantled and the glass is crushed on site	Downstream recyclers are discussed in Lead Containing Glass, below.	See Below USA
CRT Glass	CRTs that are not refurbished for resale are dismantled and the glass is crushed on site.	<p>ECS prefers to ship lead- containing glass to a CRT Tube manufacturer, which uses the glass to make new CRT Tubes (glass to glass recycling).</p> <p>Lead-containing CRT Glass not shipped for glass-to-glass recycling is shipped to a Lead (Pb) Smelter which recovers the lead as a commodity and sells it on the world market.</p>	Mexico, USA, Canada, India

Circuit Boards (Whole)	Circuit Boards are shredded to a minus 2" particles size. The iron & aluminum are removed by magnetic & eddy current separation.	Shredded circuit boards are shipped to a primary copper smelter which recovers copper, gold, silver and palladium as well as other minor elements. The metals are sold as commodities on the world market.	Canada
Batteries	Batteries are manually removed from electronic devices. The batteries are sorted by type (Alkaline, Lithium, etc.).	<p>Lead/Acid batteries are shipped to a battery manufacturer which recycles the batteries by melting the lead and using it in the manufacture of new batteries.</p> <p>Silver oxide batteries are smelted at ECS Refining Santa Clara and their silver content is captured by ECS. Post smelted materials are sent for further precious metals processing.</p> <p>All other batteries are shipped to a high temperature alloy producer which melts the batteries by their specific type to recover the respective metals.</p>	<p>USA</p> <p>USA</p> <p>USA</p>
Mercury Devices	Mercury devices are received and stored for off-site processing (fluorescent lighting tubes, for example) or mercury devices may be manually removed from other electronic devices.	All mercury-containing devices are shipped to an EPA approved mercury recycler which removes the mercury from the device and produces mercury as a commodity for sale.	USA
Polychlorinated Biphenyls PCBs	PCBs are not "accepted" for storage or processing at ECS. However, ECS may transfer PCB's to an approved TSDF	ECS provides transportation services to an authorized TSDF or recycler.	USA

Non-Materials of Concern	Recycling Process	Fate of Recycling Process	Destination
Steel	Electronic scrap is shredded to a minus 2" particle size and then the steel is magnetically removed.	The steel is shipped to a steel mill where the steel is melted to produce new steel products (steel rod, plate or bars)	Brokers
Plastics	Plastics are manually removed from the electronic scrap and baled by type of plastic (ABS, HIPS, PC etc.)	The plastic is sold to a plastics processor which grinds the plastic for sale as a raw material feed to manufacturers of plastic products.	Brokers
Insulated Wire	Wire is manually and mechanically removed from electronic scrap.	The wire is shipped to a wire chopping company which mechanically chops the wire and then uses air and/or water to separate the copper from the plastic. The copper & plastic are sold as commodities.	Brokers
Aluminum	Electronic scrap is shredded to a minus 2" particle size and then the aluminum is removed by eddy current separation.	The aluminum is shipped to aluminum alloyers which melt the aluminum and produce aluminum alloys for sale.	Brokers
CRT Yokes	Yokes are compacted and baled on site.	The yokes are shipped to copper alloyers, which melt the yokes and produce copper alloys for sale.	Brokers
Copper	Copper scrap is shredded to a minus 2" particle size and then copper is removed by magnetic separation	The copper is shipped to copper alloyers, which melt the copper and produce copper alloys for sale.	Brokers

ERI Inc., 2302 West Valley Highway, Ste 300., Auburn, WA 98001		Aaron Blum (206)577-1490	
Material Of Concern	Recycling Process	Fate of Recycling Process	End of life processing-Destination Country
CRT Glass	It is removed from CEP and screen and metal gun removed.	Glass to Glass recycling to be reused in new CRT products.	For processing: Mexicali, BC, Mexico For final furnace: Gujarat, India
Circuit Boards	Boards are removed from CEP by manual separation. They are then sent to our Fresno facility for shredding.	Precious Metals Recovery	USA, Belgium or South Korea
Batteries	Removed manually and sorted by type	Metal Recovery	All Types: USA
Mercury devices	Removed manually and managed as universal waste.	Mercury Recovery	USA
Non-Materials of Concern	Recycling Process	Fate of Recycling Process	Destination
Steel	Removed Manually and sent to Fresno to be shredded	Metal Recovery	USA
Plastics	Removed manually from CEP and bailed	Plastics Recovery	ASIA
Insulated Wire	Removed manually from CEP and sent to Fresno for Shredding	Metal Recovery	Belgium or Korea
Aluminum	Removed manually from CEP and sorted.	Metal Recovery	USA

Simon Metals LLC, 2202 East River Road, Tacoma, WA 98421		2401 St. Francis Lane, Vancouver, WA 98660 Paul Olson (253)272-2364	
Material Of Concern	Recycling Process	Fate of Recycling Process	End of life processing-Destination Country
CRT Glass	Hand sort and package for transportation in US	Shredding via Farwest Recycling Beaverton	Mexico or Canada
Circuit Boards	Shred in Tacoma and package for the refiner	Primary smelter for recovery of metals	Japan
Batteries	Hand sort and package for shipment	Metal recovery and proper disposal	U.S.
Mercury Devices	Hand removed or shredded, managed as waste	Mercury recovery or disposal	U.S.
Non-Materials of Concern	Recycling Process	Fate of Recycling Process	Destination
Steel	Removed from CEP by shredding or hand dismantling	Metal Recovery	U.S.
Plastics	Shredded and included with the circuit boards	Primary smelter	Japan
Insulated Wire	Removed by hand or shredding process	Metal Recovery	U.S. or Japan

Aluminum	Removed by shredding or by hand from the CEP	Metal Recovery	Japan, U.S.
----------	--	----------------	-------------

<b>TOTAL RECLAIM, 2200 6th Ave S., Seattle, WA 98134</b>	<b>Craig Lorch</b>	<b>(206)343-7443</b>
--	--------------------	----------------------

<b>Material Of Concern</b>	<b>Recycling Process</b>	<b>Fate of Recycling Process</b>	<b>End of life processing-Destination Country</b>
CRT Leaded Glass	Removed from monitors; screen and metal gun removed	Glass to glass, all materials are reused in new CRT	Mexico (glass washing) India (CRT manufacture)
CRT Leaded Glass	Removed from monitors; screen and metal gun removed	Glass to lead recovery	Canada
CRT Leaded Glass	Removed from monitors; screen and metal gun removed	Glass to ceramic tile	Spain
Circuit Boards	Removed from electronic equipment by hand dismantling or automated shred/sort process	Precious metals recovery	South Korea, Japan or Sweden
Batteries	Hand removed from electronic equipment, hand sorted by type.	Metal recovery	USA
Mercury devices	Hand removed from CEP, managed as universal waste	Mercury recovery	USA
<b>Non-Materials of Concern</b>	<b>Recycling Process</b>	<b>Fate of Recycling Process</b>	<b>Destination</b>
Steel	Removed from electronic equipment by hand dismantling or automated shred/sort process	Metal recovery	USA
Plastics	Removed from electronic equipment by hand dismantling or automated shred/sort process	Plastics recovery	USA or China
Insulated Wire	Removed from electronic equipment by hand dismantling or automated shred/sort process	Metal recovery	USA
Aluminum	Removed from electronic equipment by hand dismantling or automated shred/sort process	Metal recovery	USA

# WMMFA Educational and Promotional efforts cumulative and 2017 - summary

Suggested impact of cumulative E-Cycle outreach and promotion to date:

The Chart below is a summary reference of outreach efforts in the initial years of program operations (2009-2012)

(target counties as referenced = counties traditionally at or below the state "average" per capita collection level)

	2009	2010	2011	2012	2013 to date
<b>Increase public school awareness</b>					
<b>26,000 brochures and 500+ retail display posters issued</b>					
<b>Co-op print advertising bilingual Spanish and co-op as requested by collectors</b>					
<b>Multi-county press releases NPR(radio) WSJ (print) interviews released</b>					
<b>2,400 30 second radio announcements free electronics recycling</b>					
<b>Major retailers, including all Wal-marts identify E-cycle on sales receipts and apply E-cycle branding to new product packaging</b>					
<b>4000+ additional radio announcements - selected counties</b>					
<b>Major Billboard placement - Tacoma area</b>					
<b>100+ TV ads - Seattle area</b>					
<b>100+ TV ad placements Eastern WA area (Spokane area)</b>					
<b>Mobile device streaming and banner ads</b>					
<b>Major multiple billboard placements Tri Cities and Yakima</b>					
<b>Mobile device streaming, banner ads, video pre-roll Google display network</b>					
County	Population (2010 est.)	lbs. / cap 2009	lbs. / cap 2010	lbs. / cap 2011	lbs. / cap 2012
Asotin	21,700	4.87	6.38	5.06	4.22
Benton	172,900	3.07	3.39	3.81	4.25
Chelan	73,300	3.78	3.23	2.97	3.76
Clallam	70,100	5.96	5.50	6.68	5.70
Cowlitz	100,000	4.60	5.05	6.27	6.43
Douglas	38,500	0.79	1.62	1.85	2.00
Ferry	7,850	2.42	1.16	2.69	1.54
Grant	87,700	2.56	2.74	2.82	2.22
Grays Harbor	71,600	3.55	5.19	5.28	5.61
King	1,933,400	7.71	6.99	8.15	8.41
Kitsap	248,300	7.00	6.01	5.91	5.29
Kittitas	40,500	9.28	12.36	14.97	15.06
Lewis	75,600	3.81	3.76	4.65	4.47
Mason	57,100	4.83	3.15	2.05	2.13
Skagit	119,300	4.20	4.00	4.33	4.76
Snohomish	711,100	7.73	9.01	7.32	7.13
Spokane	470,300	3.62	4.12	4.71	5.10
Stevens	44,300	1.58	1.99	1.82	2.41
Thurston	252,400	5.97	6.31	7.24	7.66
Walla Walla	59,600	4.45	5.60	5.19	6.12
Whatcom	195,500	5.68	5.99	6.87	6.84
Whitman	43,600	4.11	4.63	4.91	5.42
Yakima	239,100	3.37	3.60	4.06	4.23
<b>Target WA Counties lbs. cap avg. --&gt;</b>	5,133,750	<b>6.14</b>	<b>6.15</b>	<b>6.41</b>	<b>6.72</b>
<b>All WA counties lbs. per cap avg. --&gt;</b>	6,733,250	<b>5.73</b>	<b>5.86</b>	<b>6.27</b>	<b>6.46</b>
Target counties percentage increase over all state		7.3%	5.0%	2.2%	4.1%

### **E-Cycle Coverage (2011-2013)**

KNDU Yakima ran a TV story featuring E-Cycle and a local collector on 10/23

- KPQ radio in Wenatchee ran a story featuring E-Cycle and Goodwill on 10/23
- KOMO radio in Seattle ran a story on E-Cycle on 10/24 and recorded a follow-up interview on 11/8 – I will get this clip when available
- KOMO online ran a story on 10/24
- The Columbian published a news brief on October 25
- KIT radio in Yakima ran a story on E-Cycle on 10/24 based on KNDU's coverage
- KING ran a story on 11/12

### **Hispanic Coverage**

- A Spanish story from our event ran on KUNS at 6:00 and 11:00 PM newscasts on 10/23
- Hispanic Business ran a story 10/26
- Tu Decides ran a story on 11/1
- A total of 115 Spanish spots ran on radio stations KDYK, KMMG, KZML, KZTA and KZTB

### **WEB and mobile network outreach 2012-2013:**

The WMMFA financed and produced a 15 second and a 30 second video advertising spot via agreement with KIRO TV in early 2012.

The WMMFA had 100,000 monthly mobile banner ad impressions rotating on Network Mobile with click to call feature and geo-targeted to: Skagit, Chelan, Yakima, Spokane, Whitman, Pend Oreille, and Benton counties March through November 2013

30,000 monthly video pre-roll impressions running on Google Display Network geo-targeted to Skagit, Chelan, Yakima, Spokane, Whitman, Pend Oreille, and Benton counties March through November 2013

100,000 monthly leaderboard and display ad impressions on kirotv.com across multiple counties

20,000 monthly in-video display ad impressions (:15 second E-Cycle ads) ran ROS (run of site) on KIRO-TV.com

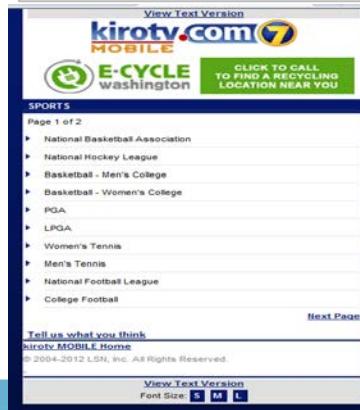


Performance Statistics:

Video leaderboard



Mobile device banner



Ecycle GDN- All Time

Ecycle GDN

Ecycle

Date range : 4/1/2013 - Yesterday (11/13/2013)

Campaign Groups	Impressions	Clicks	CTR
GDN- Video	484,469	2,460	0.51 %
GDN- Display	686,471	275	0.04 %
<b>Total:</b>	<b>1,170,940</b>	<b>2,735</b>	<b>0.23 %</b>

Top 50 Ad Groups - Ecycle - Based on Clicks (All campaigns)

Date range : Last 60 Days (9/15/2013 - 11/13/2013)

Ad Group	Impressions	Clicks	CTR
Video ad	64,072	547	0.85 %
Display Ads	384,164	127	0.03 %
Keywords	375	0	0.00 %

Ecycle

Date range : 4/1/2013 - Yesterday (11/13/2013)



Computers	649,486	55.46 %
Mobile devices with full brows	411,829	35.17 %



Tablets with full browsers	109,457	9.34 %
Other	168	0.01 %

Total Impressions: 1,170,940

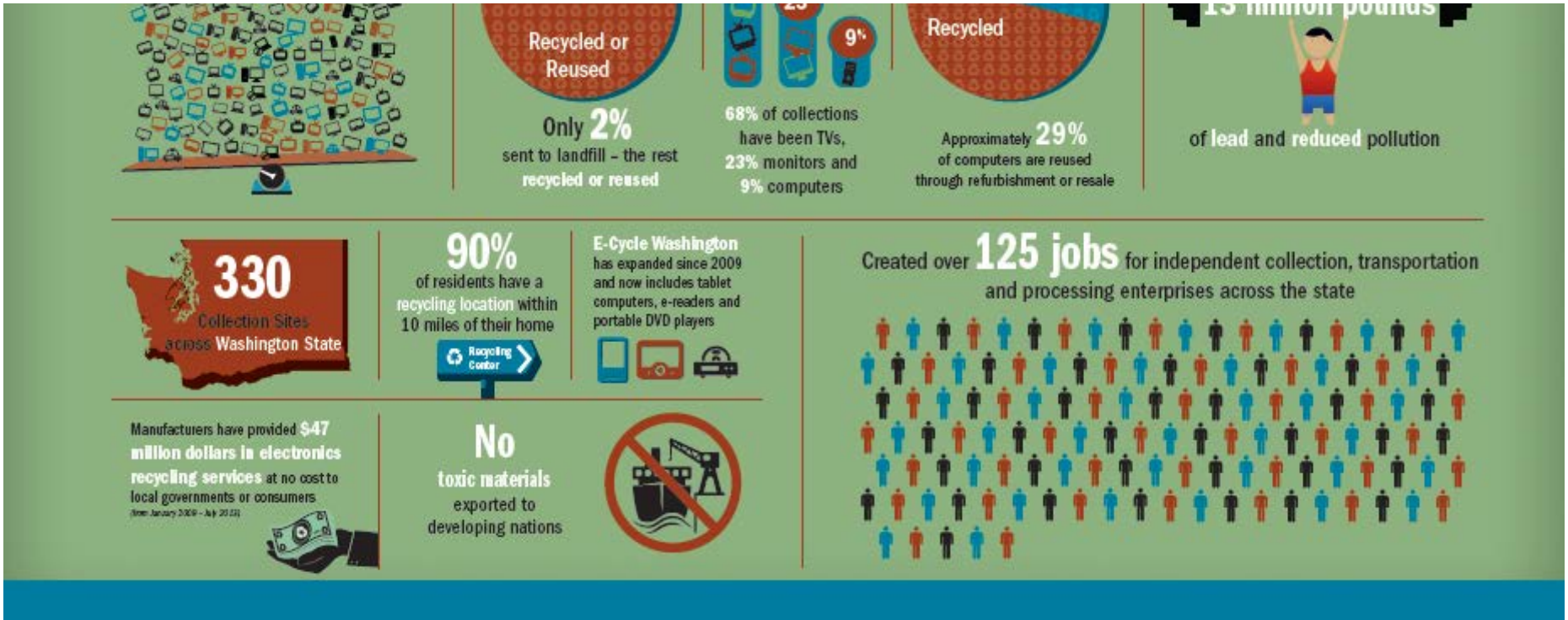
### Summary Description of some of the E-Cycle coverage (2013-2015)

- Utilization of news talk radio KIRO-FM for reaching those most likely to regularly update their technologies
- Internet audio streaming of 15 and 30 second spots (same spots as used on radio) through MyNorthwest.com, Monday - Friday 2x per day March, April, May, June, September
- Display advertisements on MyNorthwest.com with links directly to E-Cycle Washington website
- KIRO Radio spots 10 per week morning drive time, 10 per week prime time, 10 per week random time with matching audio stream 30 times per week March, April, May, June, September 2015
- 60,000 impressions per week at MyNorthwest.com - Monday through Sunday - two weeks per month
- The WMMFA participated in cooperative print advertising with Pend Oreille County Public Works throughout 2015
- Approximately 260 laminated (indoor and outdoor) Posters were distributed to our collection Network for "branding" of physical collection sites
- Approximately 4000 brochures (brochure copy below) were distributed to collectors and any interested parties throughout 2015

The WMMFA also provides posters, banners, and brochures to collectors and any interested parties requesting them. In summary the WMMFA has created and sponsored placement of TV spots, web banners, click to call, video display, and mobile advertising opportunities statewide since inception.

### WMMFA - E-Cycle WA 5th Year Anniversary Promotional Infographic Created In Collaboration With Stakeholders





In February through April of 2013 the WMMFA had multiple billboards placed along selected highway thoroughfares of medium sized counties within the state. Camera shots of the billboards are provided below. Placement was in the Tri-Cities (Benton, Franklin, Walla Walla counties) area and Yakima County for approximately 2 months per board.

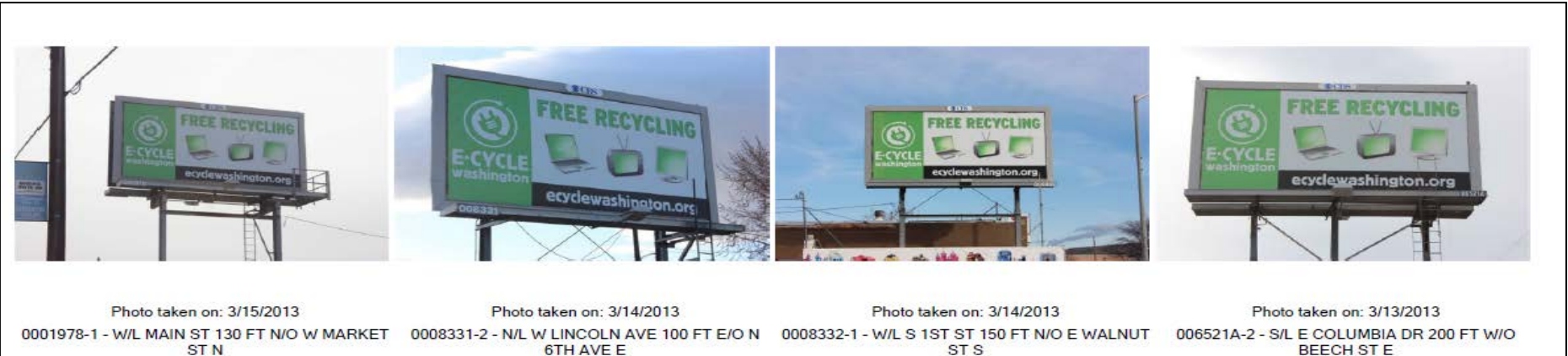




Photo taken on: 3/14/2013  
00A1985-2 - W/L N 1ST ST 120 FT N/O E G ST N



Photo taken on: 3/13/2013  
00A5515-1 - N/L W 1ST AVE 90 FT W/O S BENTON ST W

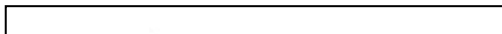
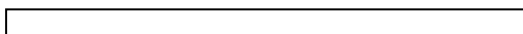


Photo taken on: 3/14/2013  
00A7002-2 - E/L S 1ST ST 530 FT S/O E 2ND AVE S



Photo taken on: 3/13/2013  
00B5269-1 - N/L W KENNEWICK AVE 220 FT W/O N UNDERWOOD ST W

- > The WMMFA owns the 15 and 30 second video productions and has made them freely available to our collectors, transporters, processors and interested parties for posting and /or advertising of the E-cycle plan along with their independent collection or processing web sites.
- > The WMMFA has always offered to participate with collectors that request cooperative advertising funds to produce local materials such as flyers, direct mail inserts, newspaper or event programs and other local published media. Participation amount varies based on total cost, pre-planned budget, and perceived effectiveness of the outreach.
- > The WMMFA maintains a website and toll free phone number that gives information about the WMMFA and the E-cycle WA plan in sufficient detail to all covered entities, potential service providers and other stakeholders. It is estimated that the WMMFA directed over 1,900 covered entities (mainly households, small governments and school districts) via phone contact in 2013.
- > Promotional materials are available by direct re-print from exportable files at our web site and as provided to Ecology for their website.
- > The WMMFA produces hundreds of laminated (outdoor) posters, banners (2013), and informative brochures annually available free of charge to collectors and interested parties for the asking. Samples of the posters, banners, and brochures reproduced below.





**E-CYCLE**  
washington



**RECYCLE**  
COMPUTERS, MONITORS AND TVs  
**FREE**  
OF CHARGE!

NEED MORE INFO?

[www.ecyclewashington.org](http://www.ecyclewashington.org)

For recycling locations, call

**1-800-RECYCLE**



**E-CYCLE**  
washington



**THIS LOCATION**  
ACCEPTS THESE ITEMS  
**FREE OF CHARGE:**

- Computers
- CPUs/Towers
- Laptops
- Monitors
- Televisions

This site may also accept other electronics, accessories and peripherals—ask us for details.  
For recycling locations for items this site does not accept, call 1.800.RECYCLE.  
If your device still works, it may be re-used through resale or donation.  
Recycled items are processed according to the state's Preferred Processing Standards.  
FOR LARGE QUANTITIES, CALL 1.866.779.6632

NEED MORE INFO?

[www.ecyclewashington.org](http://www.ecyclewashington.org)

HOURS OF OPERATION



Electronics manufacturers are taking responsibility for recycling computers, monitors and TVs from households, school districts, small businesses, small governments and special purpose districts and non-profits/charities. Please note that we are not responsible for the security of remaining data. Please clear your drives before recycling.



[www.ecyclewashington.org](http://www.ecyclewashington.org)  
**1.800.RECYCLE**

**RECYCLE computers, laptops, monitors, tvs!**



**E-CYCLE Washington is FREE!**

Electronics manufacturers pay for and provide this recycling program. It is available to households, small businesses, schools, charities and small government.



**E-CYCLE Washington is EASY!**

Convenient collection sites are available year round.



**E-CYCLE Washington recycles RESPONSIBLY!**

Participating recyclers must follow environmentally sound management practices.



**Small effort, big return.**



**E-CYCLE**  
washington

**FREE RECYCLING**



[ecyclewashington.org](http://ecyclewashington.org)

## WHAT IS E-CYCLE WASHINGTON?

E-Cycle Washington is a program that provides responsible recycling of computers, monitors and TVs in our state. Starting January 2009, electronics manufacturers in Washington are taking responsibility for the cost of recycling these products. For consumers, small businesses, school districts, small governments, special purpose districts and charities, recycling is provided free of charge at authorized collection points.

*E-Cycle Washington thanks electronics manufacturers for sponsoring this innovative program to responsibly and safely recycle electronics in our state.*

The Washington Materials Management & Financing Authority (WMMFA) is the manufacturer-funded group leading this effort. WMMFA has contracted with collectors around the state, making e-cycling convenient and easy. You can also be assured that items taken to authorized collectors are handled safely and responsibly according to preferred management standards set by WMMFA and the State Department of Ecology.



**E-Cycle Washington**  
is a program that provides  
**free recycling** of computers,  
monitors, laptops and TVs.



## WHAT'S COVERED AND WHAT'S NOT?

RECYCLING OF THESE PRODUCTS  
IS FREE UNDER THE LAW:

- Computers
- CPUs (Towers)
- Laptops
- Computer Monitors
- Televisions

## WHY E-CYCLE?

**Recycle:** It is estimated that millions of pounds of unwanted electronics are thrown in the trash in Washington each year. Electronics can contain toxic materials such as lead, cadmium, mercury and hazardous chemicals that can harm human health and the environment. E-cycling keeps these and other materials out of our landfills and incinerators and conserves natural resources and energy required to make products from scratch.

## WHAT HAPPENS TO MY STUFF?

E-Cycle Washington processors are held to high standards and must comply with the State's "Preferred Processing Standards." For details, go to [www.ecyclewashington.org](http://www.ecyclewashington.org). If the product you drop off still works, it may be reused through resale or donation.

## DATA SECURITY

WMMFA is not responsible for the release of confidential data contained within collected

For larger quantities, call 1-866-779-6632.

Peripherals and accessories are NOT covered under the law:

- Mice
- Printers
- Copiers
- Scanners
- All other electrical devices, including appliances and cell phones

For recycling locations, please call

**1-800-RECYCLE**

or visit

**[www.ecyclewashington.org](http://www.ecyclewashington.org)**

**Re-Use:** Many materials in these products can be re-used in new products if handled properly, conserving the resources and energy needed to recycle and reprocess existing units as well as reducing the need to manufacture virgin parts. Some unwanted electronics still work, and can be made available secondhand to people and organizations who may not be able to afford to buy new equipment.

E-cycling helps us all take responsibility for the products we make, buy and use from the beginning to the end of their useful lives.

electronic devices. Software programs are available to permanently destruct data. Simply formatting your drive or deleting files does NOT provide secure and complete data destruction. For more information on data security, go to [www.ecyclewashington.org](http://www.ecyclewashington.org) and click on Frequently Asked Questions.

**FOR MORE INFORMATION**

To find out more about E-Cycle Washington, data destruction, drop-off locations and how to dispose of items not covered by the program, please visit:

**[www.ecyclewashington.org](http://www.ecyclewashington.org)**

For 2016 outreach efforts continued in a similar manner as 2014 - 2015 to ensure that information about where, how, and why to recycle CEP's was available to all state residents - especially smaller counties identified as having lower collection per capita than the state wide average. Specifically:

Billboards placed:

- Shelton, WA Hwy 101 North of Air view way - 12 weeks
- Wenatchee, WA N. Miller St and N Wenatchee Ave. S - 12 weeks
- Wenatchee, WA various rotating metro locations- 16 weeks
- Quincy, WA Hwy 281 and Hwy 28N - 12 weeks
- Yakima, WA 6 locations various metro - 6 each at 16 weeks each
- Tri Cities, WA 6 locations various metro - 5 each at 5 weeks each
- Shelton, WA Hwy 101 North of Air view way - 4 weeks

In 2016 the WMMFA also contracted for Mobile ads generated via proximity to the billboard campaign ads. The mobile campaign in the Tri Cities area generated a click thru rate of .55% Secondary Action rate of 12.22% by utilization of the billboards and landing page as illustrated below (over a one month period). The mobile campaigns in the Quincy, Yakima, Shelton, and Quincy areas had a similar click thru rate and secondary action rate of 5.52%



Consumer sees OOH advertisement



Consumer sees complementing ad on phone allowing for immediate action.



Ad delivers critical information, such as distance to business location and opportunities for more information.



Clicking the ad leads to a customized landing page, leading to trackable actions such as:

- Driving directions
- Contact info
- Special offers
- Form fill

Other outreach utilized in 2016 (as in previous years) include a 50% or more co-operative advertising expenditure sharing with some of our collectors. Pend Oreille County Public Works (Newport, WA and E-Cycle Northwest - Sequim, WA) have been among participants in 2016 and others in the past. The outreach efforts as described here and as undertaken in 2016 are a cumulative ongoing effort. Posters, brochures, and co-op venues are a mainstay used throughout every year.



**For 2017** the WMMFA, based, in part, on input from Ecology purchased 36 weeks of billboard advertising in Longview, WA at the major intersection of Oregon Way and Industrial Avenue. Full size billboards were also placed in Centralia for 24 weeks at two locations. 12 weeks at W. Main and Cedar Street and 24 weeks at NE Kresky and NE Hampe Way.

The WMMFA also purchased 120 each 30 second radio spots on KIRO FM for broadcast within the Seattle listening area during prime driving times for the months of March and April of 2017. These radio spots were designed to emphasize the free recycling services provided by E-Cycle Washington as provided by the manufacturers through the WMMFA and to direct listeners to the E-Cycle WA web site to find a drop off site closest to them.

Throughout 2017 a major re-branding campaign was also undertaken by re-issuing new laminated poster sets and brochures (outdoor or indoor use) to over 60 collection site operators for use.

## Materials of Concern Export information

The preferred environmental standards that all processors contracted with the WMMFA must subscribe to require that any materials of concern (materials that present potential risk to humans or the environment) exported to a NON-OECD (Organization for Economic Co-operation and Development) member country have approval from the destination country and confirmation from the US Environmental Protection Agency.

Total weight of all materials of concern, including unwanted electronic products, electronic components, and electronics scrap collected by the WMMFA that have been exported from Washington state for plan year 2017, from processors used by the WMMFA, to countries that are not members of the Organization for Economic Co-operation and Development or the European Union = 0. This information is provided to the WMMFA by each processor. Destination countries for "materials of concern" and non- materials of concern (commodities) can be found in section 5.c.d. of this report

NOTE: The WMMFA annual report submitted in 2015 indicated that zero pounds of materials of concern (MOC) were exported to NON-OECD countries. In early 2016 we learned that one of our processors, Total Reclaim, had been exporting flat screen devices to Hong Kong, which is not a member of the OECD. The amount of devices shipped to Hong Kong was estimated at approximately 1.5 million pounds for 2015, or, 3.5% of all pounds collected in 2015. It was also determined that a quantity equating to approximately 1.9% of all devices collected since start up were likely exported to Hong Kong by this processor.

## List of CEP Manufacturers participating in the Standard Plan 2017\*

Note: Not all manufacturers listed actually received an invoice for sharing of WMMFA expenses. All invoices (plan share of expenses) were based on the total "market" shares (by weight), for the covered products accepted free of charge by the E-Cycle Washington program of each listed manufacturer holding a market share greater than .0003% of the total market share by weight of all participants for the brands they are responsible for.

Samsung Electronics Co
Dell Computer Corp
VIZIO Incorporated
Hewlett Packard
LG Electronics USA Inc
Apple
Tongfang Global (Element, Westingh, SEIKI)
Best Buy
Lenovo
Sony Electronics Inc
Acer America Corp
Asus Computer International
Emerson Radio Corp
Hisense USA Corp
TTE Technology Inc
Panasonic
SANYO Funai Corporation, Inc.
Curtis (RCA)
Toshiba America Information Systems, Inc.
Philips Electronics (P&F) Magnavox, Philco, Philips
Envision Peripherals Inc
Sceptre, Inc.
Venturer Electronics Inc
ViewSonic Corp World HQ new .91
Haier America
Hitachi America, LTD. Digital Media Division
Amazon Fulfillment Services, Inc.
JVC KENWOOD USA Corp
Microsoft Corporation
YiFang U.S.A Inc
Planar Systems Inc
NEC Display Solutions
BenQ America Corp
PLR IP Holdings, LLC
Osram Sylvania

## List of CEP Manufacturers participating in the Standard Plan 2017\*

Thomson Inc USA
VOXX International Corp. (Audiovox)
Cellco Partnership dba Verizon Wireless
MSI Computer
Changhong Trading Corp. USA
TCT Mobile (US) Inc.
3MD Inc. - Alden Assoc
Oracle America Inc
Polycom Inc
VTech Electronics North America, LLC
Matell
Hannstar Display Corp
Equus Computer Systems Inc.
Ematic
SSNA, Inc.
DPI Inc
4th Dimension Computer
International Business Machines Corp.
Shuttle Computer Group
Tatung Company of America Inc
US Micro PC Inc
USA111 Inc
Craig Electronics, Inc
Fujitsu America, Inc.
HTC America, Inc.
American Future Tech Corp dba iBuypower
EIZO Inc.
CyberPower
Curtis International Ltd
Worldwide V7 Private Label
Supersonic, Inc.
Barnes&Noble.com LLC
Disney Consumer Products, Inc.
Double Power Technology, Inc. violation
HKC Digital USA Inc. Violation
Infotech Systems Inc BK
Infotel Distributors Inc
Oregon Scientific, Inc.
PC System Services Inc
Sanyo

## List of CEP Manufacturers participating in the Standard Plan 2017\*

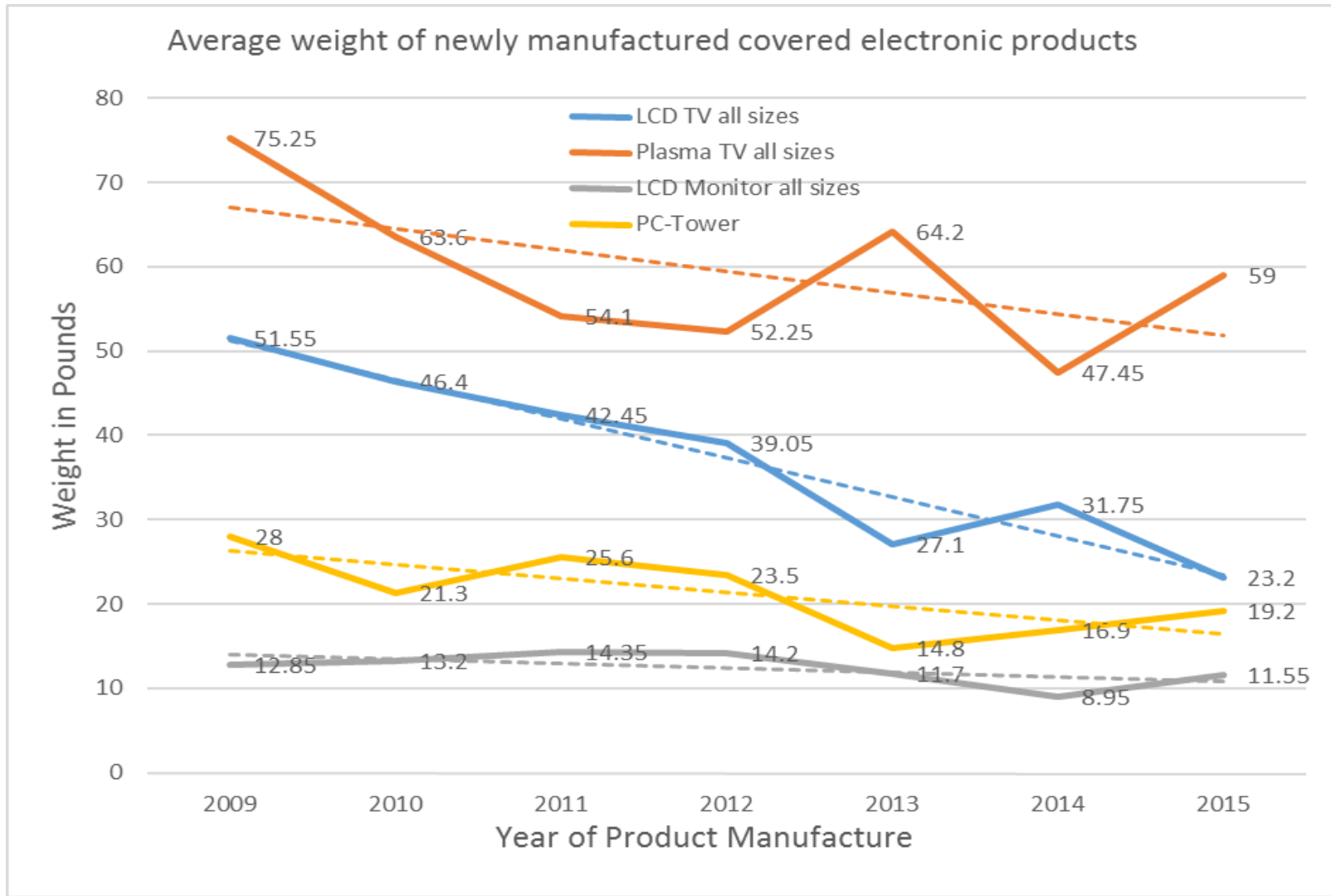
Sharp Electronics Corporation
TMAX Digital Inc.
Upstarusa Group
Visual Land
Wyse Technology LLC
Silo Digital
Lorex Technology Inc.
GammaTech Computer Corp.
Click N' Kids
Pioneer Electronics (USA), Inc.
Premio, Inc
China Great Wall Computer Holding LTD
Matsunichi Digital USA, Inc.

Documentation of work done with direct processors used by the Standard Plan to promote and encourage the design for recycling of new products (CEP's) destined for end of life recycling under this program

In the 2009 Annual Report to Ecology the WMMFA outlined a plan describing collaboration with the NCER (National Center for Electronics Recycling) and the Green Electronics Council to pursue grant funding for a "Close the Loop" registry with the goal being creation of a one stop clearinghouse that would contain a database accessible by manufacturers and processors that would contain specific de-manufacturing hints covering components and contents of the electronic products they receive. This effort was not successful and no grant funds were received. However, based on sampling results of CEP weights for the invoicing period 2009 - 2016 the average weights of CEP's have trended downward considerably (see chart below). Many WMMFA member manufacturers are involved in Dfe and Dfr efforts nationally or globally as the majority of the weight of CEP's covered by the Standard Plan are from manufacturers that also sell worldwide. Approximately 85% of the electronic products collected by the WMMFA now (specifically CRT TV's and CRT Monitors) are no longer being manufactured for sale in the US. The chart provided below illustrates the progress in reducing the overall weight of CEP's currently being produced and sold in Washington and is similar in trend to national results.

Average net weights (excludes packaging) by CEP used to convert NPD and IDC unit sales to pounds								
CEP Type	2009	2010	2011	2012	2013	2014	2015	weight variance % 09 to 15 - where applicable
	Average lb.	Average lb.	Average lb.	Average lb.	Average lb.	Average lb.	Average lb.	
TV LCD 17-39"	24.4	24.2	19.4	18.7	15.7	13.4	11.8	-52%
TV LCD Over 40"	78.7	68.6	65.5	59.4	38.5	50.1	34.6	-56%
TV Plasma 17-39"	42.1	36.2	41.5	41.5	n/a	42.1	negligible volume	n/a
TV Plasma Over 40"	108.4	100.8/81.3	66.7	63	64.2	52.8	59	-46%
TV Rear Projection>40"	109.4	108.3	87.8	94.2	107.8	113.7	negligible volume	n/a
TV Direct View 17-39"	89.6	91.1	84.3	92.8	35.3	35.3	negligible volume	n/a
LCD Monitor Under 19"	9.8	9.9	10.3	9.3	10.4	9.2	9.9	1%
LCD Monitor Over 19"	15.9	16.5	18.4	19.1	13	8.7	13.2	-17%
TABLETS	n/a	n/a	n/a	1.6	1.3	1.2	1.2	n/a
E-READERS	n/a	n/a	n/a	0.7	1	0.6	0.7	n/a
Laptop 3 lbs. and less	2.4	2.5	2.7	2.8	2.7	2.4	2.5	4%

Laptop > 3-5 Lbs	4.1	4.1	4.3	3.9	4.1	4.2	4.3	5%
Laptop >5-7 Lbs	6.7	5.9	5.9	5.9	5.7	5.9	5.9	-12%
Laptop Over 7 Lbs	10.2	10.3	10.4	8.3	8.6	8.4	9.1	-11%
All Laptops average	5.9	5.7	5.8	5.2	5.3	5.4	5.2	-12%
PC-Tower	28	21.3	25.6	23.5	14.8	16.9	19.2	-31%
Portable DVD	n/a	n/a	n/a	n/a	n/a	2.9	2.4	n/a
<b>Sum TTL weight all CEP's</b>	<b>535.6</b>	<b>485.9</b>	<b>448.6</b>	<b>449.9</b>	<b>369.9</b>	<b>373.2</b>	<b>179</b>	<b>-67%</b>



**PROCESSING COSTS - DFR —2016**

Each of the processors used by the Standard Plan must comply with the “preferred processing standards” as defined in the “Environmentally Sound Management and Performance Standards for Direct Processors.” An early survey sent out in 2009 to the Washington state processors used by the Authority revealed these recommendations, in order of perceived impact and importance, pertaining to reducing the overall cost to manufacturers for processing, and for the recycling or diversion of a higher percentage of materials of concern.



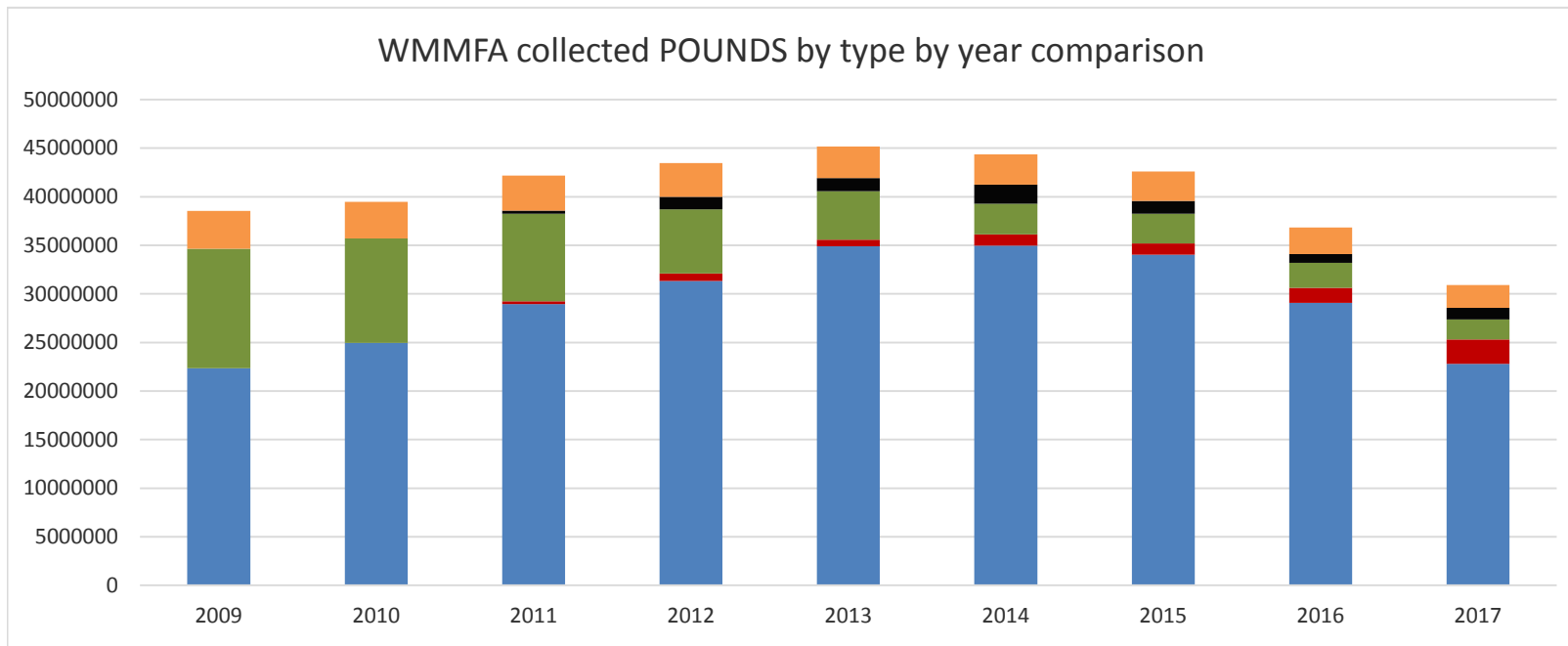
1. Flat Panels will become a larger percentage of material to be recycled in the future due to the current proliferation of LCD and plasma TV's and LCD monitors being sold now. Processors need an outlet for CRT Glass and LCD screens in order to reduce processing costs to manufacturers.

2. Eliminate multi laminated materials and allow for easy separation of plastics from metals from lamps from glass so that the materials separation cost does not exceed the compensation from recycling the material. Assist in providing buy back opportunities for recovered plastics and other reusable items.

3. New technologies in manufacture of CEP's should allow for more automated dismantling using snap out fittings that may be accommodated by automated processes for dismantling. Identify components containing hazardous materials for easier and more efficient and complete removal and recycling.

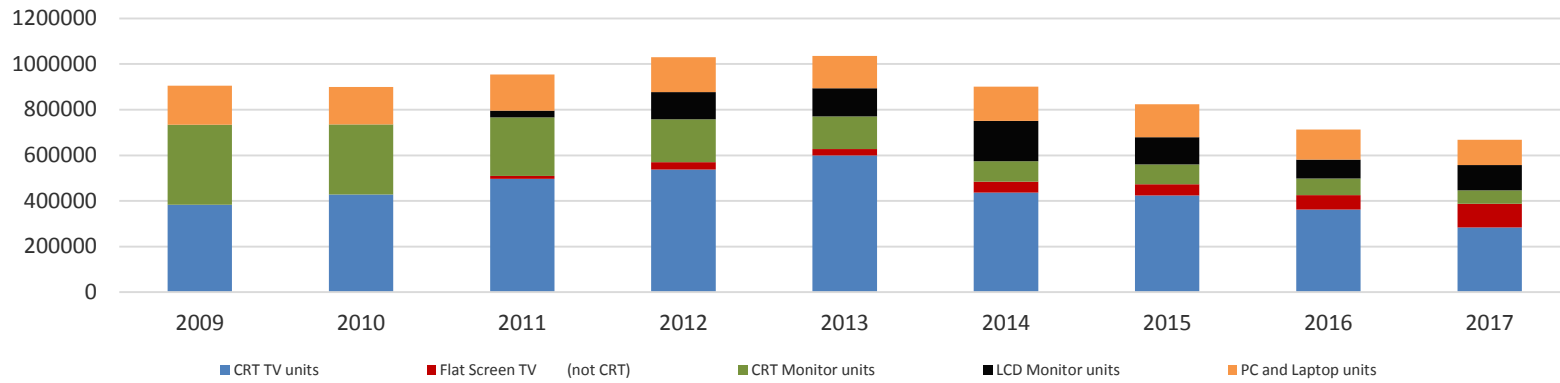
4. Removing or reducing lead from glass and circuit boards would reduce downstream processing costs. Reduce or eliminate beryllium, cadmium, mercury and lithium (batteries).

These recommendations, as provided by the participating Washington State Standard Plan processors, are not a new revelation to manufacturers. They are shared with all participating manufacturers as collective information that summarizes some of the obstacles to lowering our (WMMFA) collective processing costs.

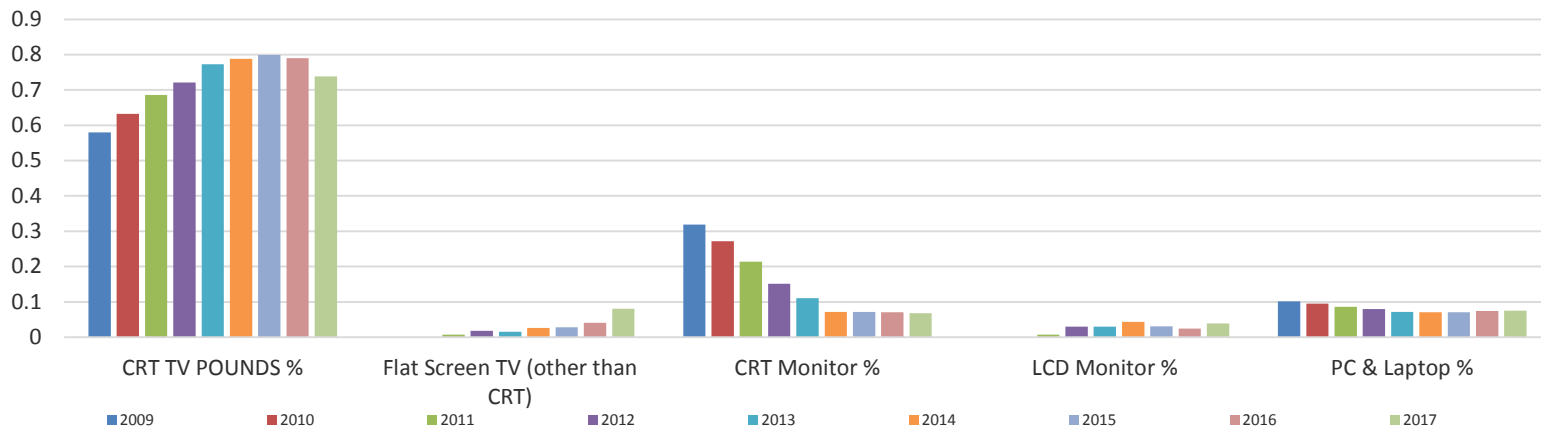


■ CRT TV pounds    
 ■ Flat Screen TV (other than CRT)    
 ■ CRT Monitor pounds    
 ■ LCD Monitor pounds    
 ■ PC and Laptop pounds

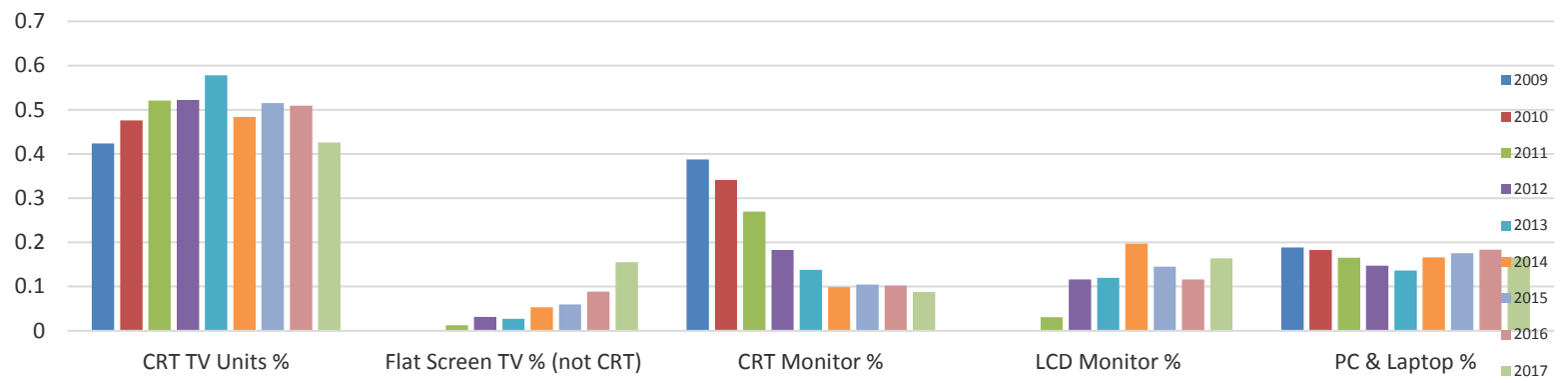
WMMFA collected UNITS by type by year comparison (units extrapolated using average weights per product estimates)



Percentage of CEP product type by year - WEIGHT



Percentage of CEP product type by year - UNITS



## Re-use information -2017

Based on feedback from our network of collectors typically involved in refurbishment and/or resale of used electronics the ratio of reused to recycled products varies considerably by type of collector, and, type of product. Many of our non-profit collectors perform some refurbishing and reuse operations on higher value devices as an alternative to submitting to this program for recycling. The volume of covered electronics put into reuse is declining year to year due to several factors including the obsolescence of CRT products given the cost and quality of their flat screen replacements and the low retail prices of new technology LCD, LED, and computing products available. Since the E-Cycle Washington program was designed primarily as an end of life program for unwanted electronics many of our collectors focus on getting CEP's to the program for responsible recycling of contents due to the low sales value of refurbished equipment in relation to the sales price of new equipment available at main stream or on-line retailers. For 2017 we estimate that a weight equivalent to approximately **150,800 pounds of COMPUTERS** ( 7250 units of laptops and towers combined) were put into reuse by our collectors. This estimate is based upon an approximate 6.5% re-use estimate across all of our collectors on the 7.5% (by weight) of all desktop or laptop product collected. We estimate a negligible amount (**nil%**) of **CRT TELEVISIONS** were put to reuse. Of **FLAT PANEL TELEVISIONS** (plasma, LCD, and LED) we estimate that approximately 5.2% by weight of flat screen TV (**130,000 pounds / 5400 units**) to reuse **with FLAT PANEL MONITORS of 119,000 pounds, or 10,900 units** sent to reuse by collectors. **CRT MONITOR reuse was negligible (0%)**. These pounds are NOT included in our collected pounds reports as they are sent to re-use directly by the collectors and therefore not transported or processed within the E-cycle program. **Including the 439,459 pounds of reuse** reported by our processors **approximately 839,259 pounds of CEP materials, in total**, were sent to refurbishment and/or reuse if including CEP's put into reuse by collectors and processors. Therefore, approximately 52% of the re-use volume is managed at the processor level with 49% occurring at the collector level.

NOTE: The Authority has no formal data collection means to obtain re-use volumes from our collectors. In fact, many of them compete for collections from the donating public. For this reason we report with reasonable accuracy, the re-use pounds by product type from our PROCESSING network and we make broad estimates about re-use data at the COLLECTOR level based on the types of products they collect and informal conversations with collectors as to the volume of products being sent to re-use.

Reuse Pounds Total Reclaim - 2017 (Total Reclaim was the only processor engaged in re-use activity)

Computers	13,564	Approximately 60% drop in volume from 2015 for CPUs in 2016.
Laptops	174,396	Working product sent to reuse
Televisions	61,403	Working units sold into reuse
Monitors	<u>190,096</u>	Reuse sales of LCD or LED only
Total:	439,459	

# WMMFA Annual Program Revenue and Expenses - 2017

Figures based on "cost" basis: I.E.: Revenue recorded as received and expenses recorded when paid

Audited or Reviewed financial statements for publication in the WMMFA annual report on an accrual basis will be available mid 2018 (for calendar year 2017 statements)

Program net CEP pounds collected and processed 2017 ----->

**30,901,353**

<b>Total REVENUE from manufacturer payments to plan - including reserve carry forward from 2016</b>	<b>\$9,399,442</b>	<b>100%</b>
<b>OPERATIONAL Expenses</b>		
Total COLLECTION EXPENSES - payments to registered collectors and for CEP materials from "covered" events	\$2,629,262	29.4%
Total TRANSPORTATION EXPENSES - purchased from registered transporters and paid to collectors that transport	\$1,314,990	14.7%
Total NET PROCESSING EXPENSES - payments to registered processors	\$4,573,813	51.2%
Public OUTREACH including advertising, educational and promotional efforts	\$33,405	0.4%
<b>TOTAL OPERATIONAL DIRECT and SERVICE PROVIDER EXPENSES</b>	<b>\$8,551,470</b>	<b>95.7%</b>
<b>ADMINISTRATIVE Expenses</b>		
Salaries and wages, including payroll taxes	\$307,229	3.44%
Professional services: legal and accounting	\$49,736	0.56%
Rent expense	\$4,200	0.05%
Travel expenses - board and employees	\$2,876	0.03%
Office supplies	\$3,333	0.037%
Insurance expense	\$4,897	0.05%
Telephone and internet expenses	\$4,343	0.049%
Meetings and seminars	\$3,195	0.036%
Postage and delivery	\$1,966	0.022%
Office hardware and IT equipment	\$929	0.010%
Utilities	\$766	0.009%
Bank service charges	\$1,198	0.013%
Miscellaneous	\$0	0.000%
<b>TOTAL ADMINISTRATIVE EXPENSES</b>	<b>\$384,668</b>	<b>4.3%</b>
<b>Total Administrative and Operational EXPENSES</b>	<b>\$8,936,138</b>	<b>100.0%</b>
<b>*NET Reserves to carry forward to 2018 and/or available as credit to manufacturers on future invoices</b>	<b>\$463,304</b>	<b>4.9%</b>

\* Standard Plan finance policy requires reserves to be maintained between 9% and 20% of quarterly manufacturer share expenses

**Total program cost per pound collected, transported, and processed 2017**

**\$0.289**

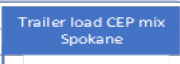

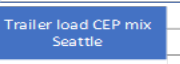
This report was prepared per WAC 173-900-800 and submitted using the template provided by Ecology (converted to workbook) and updated/improved to include additional information required by SHB 1498 passed in 2013. The information within this report/workbook was compiled using sources available to the WMMFA including actual and estimated data from service providers to the WMMFA as outlined in the Standard Plan.

Submitted electronically on February 27, 2018 to Christine Haun at [Christine.Haun@ecy.wa.gov](mailto:Christine.Haun@ecy.wa.gov)

Authorized signor WMMFA  
John Friedrich, Executive Director

A handwritten signature in black ink that reads "John Friedrich". The signature is written in a cursive style with a large initial "J" and a distinct "F".

The analysis presented below is an excerpt from the WMMFA's approved Standard Plan that describes the process involved in determining collected CEP volume allocation among participatin processors

WMMFA Volume Assignment Decision Matrix: Average				
PROCESSOR ---->		A	B	C
AVERAGE LOAD COMPOSITION:	Load make up Average	QUOTED COST PER POUND:		
CRT TV	70%	\$0.15	\$0.18	\$0.19
LCD + Plasma TV	9%	\$0.20	\$0.17	\$0.19
Computers Laptops	8%	-\$0.12	-\$0.05	-\$0.19
CRT Monitors	4%	\$0.15	\$0.18	\$0.19
LCD Monitors	7%	\$0.20	\$0.17	\$0.19
Large (wood) TV	2%	\$0.15	\$0.18	\$0.19
Weighted average cost per pound PROCESSING only based on average load ---->	100%	<b>\$0.135</b>	<b>\$0.153</b>	<b>\$0.175</b>
Transport cost from collector to Processor -->		A	B	C
Transport cost from Eastern WA		\$0.07	\$0.06	\$0.03
Processing + Transport cost		\$0.21	\$0.21	<b>\$0.20</b>
Transport cost from SW WA		\$0.10	\$0.07	\$0.02
Processing + Transport cost		\$0.24	\$0.22	<b>\$0.19</b>
Transport cost from Metro SEA WA		\$0.05	\$0.02	\$0.02
Processing + Transport cost		\$0.19	<b>\$0.17</b>	\$0.19
WMMFA Volume Assignment Decision Matrix: Specific				
	 <ul style="list-style-type: none"> <li>•16% Computer</li> <li>•8% CRT Monitor</li> <li>•57% CRT TV</li> <li>•14% LCD TV</li> <li>•5% LCD Monitor</li> </ul>	 <ul style="list-style-type: none"> <li>•10% Flat Screen</li> <li>•20% Computer</li> <li>•10% Monitor</li> <li>•60% TV</li> </ul>	 <ul style="list-style-type: none"> <li>•0% Computer</li> <li>•10% Monitor</li> <li>•90% TV</li> </ul>	
STANDARD PLAN REFERENCE ITEMS *				
<ul style="list-style-type: none"> <li>Environmental</li> <li>Competitive Rates</li> <li>Creativity</li> <li>Capacity: Transporter &amp; Processor</li> <li>Proximity to collector</li> <li>Auxiliary services: Transportation</li> <li>Billing Accuracy Timeliness</li> <li>Existing Infrastructure</li> <li>Fairness per RCW and WAC</li> </ul>				
*Expanded detail of this section on page 2				
DECISION				
PROCESSOR ----->		A	B	C
Processor LOCATION		NW WA	CW WA	SW WA
SPECIFIC LOAD COMPOSITION:	Load make up Specific	QUOTED COST PER POUND:		
CRT TV	57%	0.15	0.1795	0.19
LCD + Plasma TV	14%	0.2	0.165	0.19
Computers Laptops	16%	(0.12)	(0.05)	(0.19)
CRT Monitors	8%	0.15	0.1795	0.19
LCD Monitors	5%	0.2	0.1675	0.19
Large (wood) TV	0%	0.15	0.1795	0.19
Weighted average cost per pound PROCESSING based on specific load ---->	100%	<b>\$0.116</b>	<b>\$0.153</b>	<b>\$0.175</b>
Transport cost from Eastern WA		\$0.07	\$0.06	\$0.03
Processing + Transport cost		<b>\$0.19</b>	\$0.21	\$0.20
Highlighted (Yellow) = lowest cost option, which, as illustrated is not always the decision made				

**\*Expanded Detail: E-Cycle Washington as managed by the WMMFA promotes Re-use and Recycling as a priority as evidenced by all Processors commitment to the "preferred" processing standards**

<b>Environmental</b>	Are there any red flags in audit - how important are they ?		
	What is current inventory of materials requiring processing, and is it low or high in comparison to others ?		
	Does processor have reasonable assurance from downstream vendors as to ultimate disposition? Audits?		
	What is the perceived RISK to the WMMFA of using processor? Are they in good standing in their communities?		
	Considerations: Insurance, Litigation, Capital, Capacity, Expertise, Experience		
<b>Competitive Rates</b>	Rates by commodity make sense in comparison to freely bid rates by others, or suggested rates based on market conditions ?		
	Does processor transport in their proximity that would allow lower overall rate or better value ?		
	Has processor justified rates via quality of downstream vendors destinations ?		
<b>Creativity</b>	Does the processor use truck, ocean vessel, or train for lower environmental impact and expense ?		
	Does the processor use local vendors to save cost / environmental impact ?		
	Does the processor have multiple options in order to sustain plan compliance ?		
	Does the processor seem knowledgeable and have expertise in their field?		
	Are their quality differences, perceived or real, of processors - by collectors that result in collector "requests" to use a certain processor ?		
	Does the Processor have a "re-use" component to their business ?		
	How much of the total weight of materials provided the processor is landfilled ?		
	Does the processor engage in public collection events coordinated by them ?		
<b>Capacity: Transporter &amp; Processor</b>	Does the processor require volume corrections (plus or minus) from the authority due to their own operational or staffing issues ?		
	Can the processor adjust to downturns and upturns given unpredictable collection volumes by region ?		
	Is the processor easy to work with?		
	Does the processor have enough dock doors and staff to accept multiple deliveries at the same time?		
	Does the processor ever turn away transporters for its own operational convenience?		
	Do collectors or other transporter vendors complain about processors service when receiving?		
	Will transports deliver to the processor for a reasonable rate? Do we incur detention charges?		
<b>Proximity to collector</b>	The higher density of collection sites without self transport = great transport opportunity for processors		
	Location of processor extremely important for both cost (length of transport) and environmental considerations		
	Does proximity of processor trump actual commodity prices via lower transport cost?		
	What is the weighted average processing cost by collector, by processor, and are other constraints (capacity, etc.) hit before this consideration?		
<b>Auxiliary services: Transportation</b>	Can the processor make small and large collector pick ups timely using the correct equipment (liftgate, box truck, semi)?		
	How far, in miles, will a self transporting collector transport his materials, and, at what cost, before the WMMFA moves to use a processor in closer proximity for their (collector) convenience?		
	Can the processor handle mistakes by collectors, transporters, the WMMFA or the public with a reasonable approach?		
	Is the transporter getting sufficient volume from the WMMFA to remain interested in hauling favorable, and unfavorable, transport lanes?		
<b>Billing Accuracy Timeliness</b>	Does the Processor communicate effectively if there are questions or problems?		
	Is the processor timely and accurate with invoices?		
	Is the processor "high maintenance" in terms of WMMFA staff time?		
	Does the processor provide feedback to the Authority when it encounters problems?		
	Does the processor provide enough detail on invoices to identify all relevant recyclable downstreams by commodity type?		
	Do processors invoiced weights match collectors estimated or actual weights where applicable?		
	Is the processor responsive with informational requests?		
<b>Existing Infrastructure</b>	Is the processor establishing operational plans that take business from an existing vendor with no value added?		
	Are there competing services to what the processor offers that are a better value given any duplication of effort?		
<b>Fairness per RCW and WAC</b>		RCW	
	Is re-use or recycling the first option	70.95N.030 (3)	
	Is the business located in the State?	70.95N.060 (5)I,ii,iii	
	Are all registered processors being u	70.95N.280	
	Is the processor innovative?	70.95N.280 (7)	
	Does the authority avoid the creatio	70.95N.310 (2)	
	Is the authority following policy per	70.95N.320 (4)	
		WAC	
	Is the processor listed as in complian	173-900-300 (4)bii	
	Is the processor in compliance with	173-900-300 (4)bii	