



Reclaimed Water Rule Making

ADVISORY COMMITTEE

NOVEMBER 3, 2014



WELCOME & INTRODUCTIONS

- ✘ Building Logistics
- ✘ Meeting Management
- ✘ Introductions
 - ✘ Name
 - ✘ Organization
 - ✘ Brief Related Knowledge



GROUND RULES



- ✘ Be respectful of Others
- ✘ One conversation at a time – Avoid side conversations
- ✘ Active Listening
- ✘ Focus on the issue not the person
- ✘ Manage your voice time
- ✘ All ideas are welcome
- ✘ Phones, turn to vibrate – take calls outside
- ✘ Address Issues and Concerns in the room
- ✘ As much as possible use Dialogue, not Debate
 - + Sharing experiences around the proposed Rule
 - + Focus attention on listening to understand
 - + Be curious and open to learning – not rebutting or defending

DECISION MAKING

✘ Methods:

+ Directive Leader Decides

+ Consultative 

+ Voting

+ Consensus Delegated



RECLAIMED WATER RULE MAKING

- ✘ Purpose
- ✘ Process
- ✘ Advisory Committee Role
- ✘ “Preliminary Draft Rule”



Purpose for Rule-Making



Purpose of Rule-Making

Legislative Mandate (Chapter 90.46 RCW Reclaimed Water)

- Ecology, in coordination with Department of Health, adopt Rules to:
 - Encourage the use of Reclaimed Water
 - Preserve Potable Water
 - Contribute to Instream Flows and Wetlands
 - Reduce Discharges to Puget Sound
 - Respond to Growth and Climate Change

What is Reclaimed Water?

Water derived in any part from wastewater with a domestic wastewater component that has been adequately and reliably treated, so that it can be used for beneficial purposes.

Chapter 90.46 RCW



Reclaimed Water Beneficial Uses

Recreational Field
Irrigation



Agricultural Irrigation
(Food Crops/Livestock)



Golf Courses



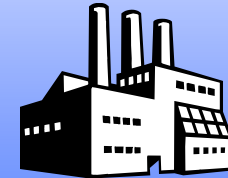
Impoundments
(Landscaping/
Snowmaking)



Environmental
(Wetlands/Streams)



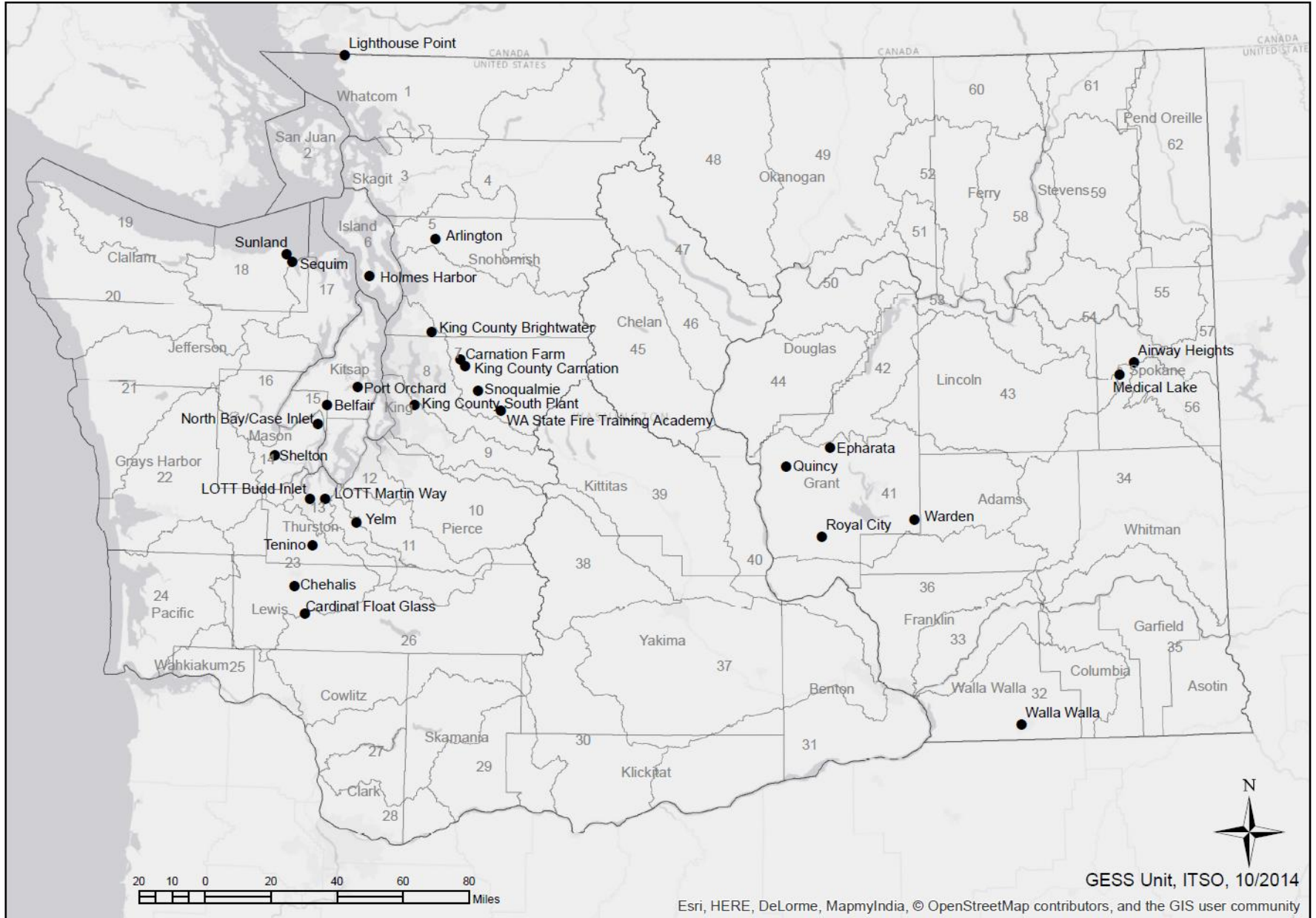
Industrial



Ground Recharge



Reclaimed Water Facilities



Rule Making Process



Rule-Making Process

Planning
Phase

CR-101

Drafting/
Proposal
Phase

- Advisory Committee

Public
Comment
Phase

- Public Hearing

CR-102

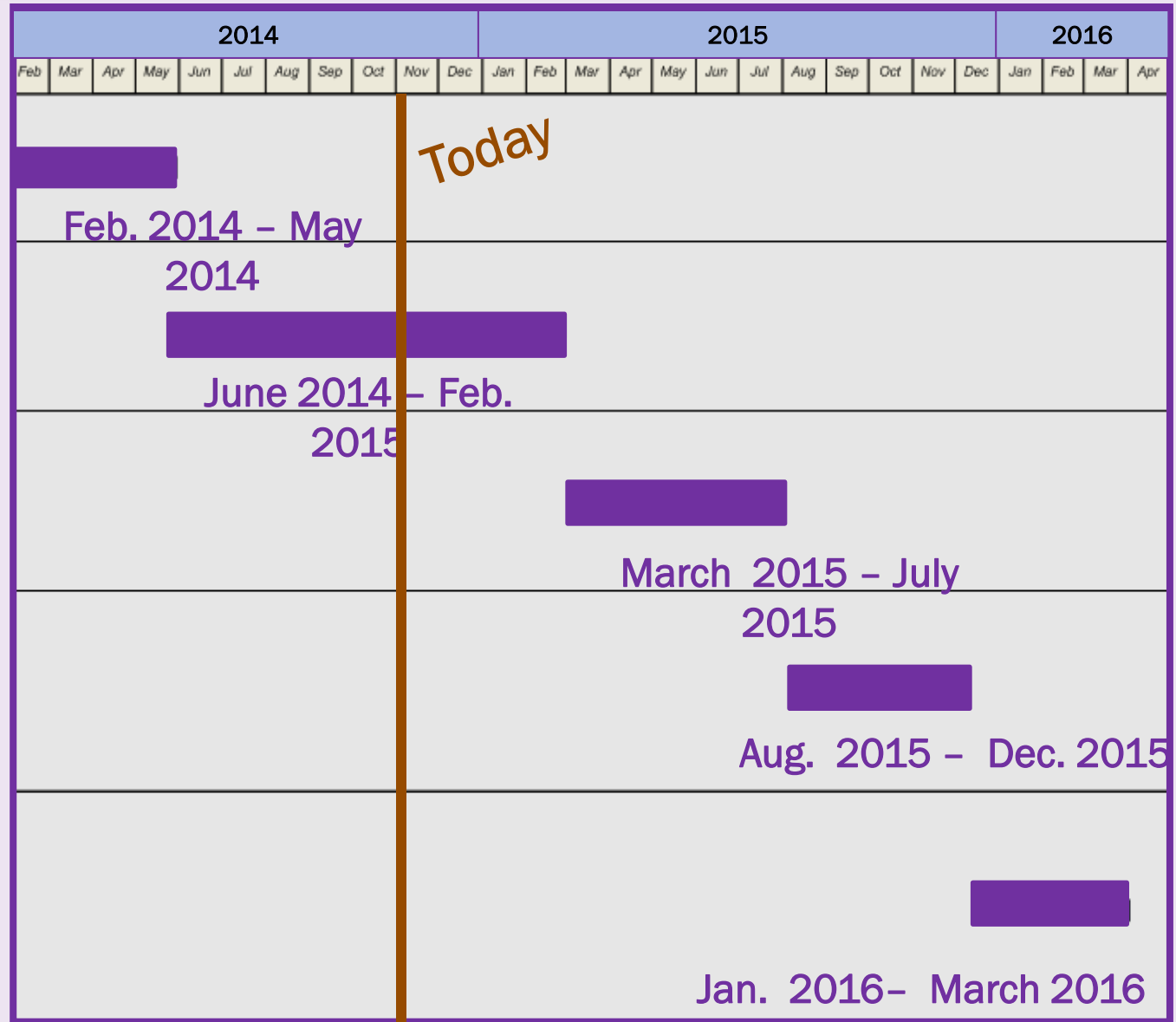
Adoption
Phase

CR-103

Implementation
Phase

Rule Making Process - Schedule

- ✘ Planning
- ✘ Drafting
- ✘ Public
- ✘ Adoption
- ✘ Implement



ADVISORY COMMITTEE ROLE

- ✘ Advisory Committee Role
 - + Part in Rule Making
 - + Decision Making
 - + Ground Rules



PRELIMINARY DRAFT RULE

- ✘ 2006-2010 Effort Up to Rule Making Suspension
- ✘ Current Condition
 - + Reactivated Process
 - + Coordination and Latest Revisions
- ✘ Rule Review Guidance



MANUAL

- ✘ 2006-2010 Effort
- ✘ Current Condition
 - + Reactivation Process
- ✘ Manual Review Guidance



LINGERING ISSUES

- ✘ From 2006-2010 Effort
 - + Water Rights Impairment Evaluation
 - + Ground Water Standards
 - + Statute Amendments:
 - ✘ Include “upstream” Consideration
 - ✘ Define “existing” Water Rights
- ✘ 2014 Advisory Committee Issues
 - +



WATER RIGHTS IMPAIRMENT EVALUATION

✘ Review Process

- + Overview of Evaluation Process
- + Questions & Answers



EVALUATION REQUIREMENTS

✘ Purpose

- + “Under RCW 90.46.130, reclaimed water facilities shall not impair any existing water right downstream from any freshwater discharge points of the reclaimed water facility unless compensation or mitigation for such impairment is agreed to by the affected water right holder” WAC 173-219-100



EVALUATION REQUIREMENTS

- ✘ Applicability

- + Anyone proposing to produce Reclaimed Water with potential of Impairing Downstream Water Rights

- ✘ Existing Water Rights

- + Permits, Claims or Certificates in Existence when Evaluation Accepted by Ecology

- ✘ Cost Reimbursement Agreement

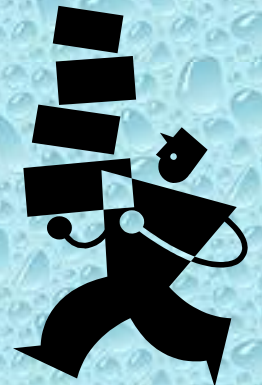
- + Applicant Requests Ecology to Conduct Evaluation

EVALUATION CONTENT

- ✘ Meet with Ecology
- ✘ WAC 173-219-160 Engineering Report
 - + i.e. Owner, Location, Project Description, etc
- ✘ Water Rights Impairment Information
 - + i.e. Water Rights, Flows, Uses, Agreements, etc.
- ✘ Other Relevant Information Requested

APPLICANT RESPONSIBILITIES

- ✘ Applicant or Ecology Conducts Evaluation
- ✘ Part of the Engineering Report
- ✘ Evaluation Content
- ✘ Timeline (Planning Phase)
- ✘ If Impairments – Decision Time
- ✘ Abandon, Compensation or Mitigation
- ✘ Documented Agreements



ECOLOGY RESPONSIBILITIES

- ✘ Once Evaluation Accepted, Clock Starts (180 days)
- ✘ Notify WDFW and Affected Tribe(s)
- ✘ Consult with WDFW and Affected Tribe(s)
- ✘ Issue Final Determination
- ✘ Applicant – Decision Time



QUESTIONS & ANSWERS

MANUAL (PURPLE BOOK)

- ✘ 2006-2010 Effort
- ✘ Current Condition
 - + Reactivation Process
- ✘ Manual Review Guidance
- ✘ Proposed Process
 - + Establish Technical Subgroup

Washington's Reclaimed Water Rule Making Process

Contact information: Dennis McDonald
Dept. of Ecology
360-407-6321
reclaimedwater@ecy.wa.gov

Reclaimed Water website:

- www.ecy.wa.gov/programs/wq/reclaim/index.html

The screenshot shows the Washington State Department of Ecology website page for Reclaimed Water. The page features a navigation menu with links for Home, WATER, AIR, WASTE, CLEANUP, TOXIC HAZARDS, and GREEN. The main content area is titled "Reclaimed Water" and includes a sub-header "Water Quality > Wastewater Treatment > Reclaimed Water". The page contains several sections: "RECLAIMED WATER" with links for Legislation, Permitting, Resources and Guidance, Useful Links, and Contacts and LISTSERV; "Reclaimed Water" with three images (water bottles, pipes, and a sprinkler) and a paragraph explaining the process of reclaiming water; "Coming Soon! Frequently Asked Questions about Reclaimed Water"; "Standards for the Use of Reclaimed Water" with a paragraph about the standards developed by the Departments of Health and Ecology; and "Water Reclamation and Reuse Standards" with a link to the standards document. A "SPOTLIGHT" section on the right highlights "NEW! Rule Making Public Workshop July 18" and "2009 Report to the Legislature Water Reuse Implementation Standards for Reclaimed Water". The footer includes "Access Washington", social media icons, and copyright information for the Washington State Department of Ecology.



FEEDBACK



Reclaimed Water

- RECLAIMED WATER**
- Legislation
- Permitting
- Resources and Guidance
- Useful Links
- Contacts and LISTSERV

[Water Quality](#) > [Wastewater Treatment](#) > Reclaimed Water

Reclaimed Water



Reclaimed water is an important component of wise water management. Reclaimed water is derived from domestic wastewater and small amounts of industrial process water or stormwater.

The process of reclaiming water, sometimes called water recycling or water reuse, involves a highly engineered, multi-step treatment process that speeds up nature's restoration of water quality. The process provides a high-level of disinfection and reliability to assure that only water meeting stringent requirements leaves the treatment facility.

[Frequently Asked Questions about The Reclaimed Water Rule](#)

Standards for the Use of Reclaimed Water

The Departments of Health and Ecology – with assistance of a Water Reuse Advisory Committee, interested stakeholders, and a consultant team of nationally recognized water reuse experts – developed standards for most applications of reclaimed water.

The standards emphasize public health protection and provide design, treatment and use area criteria for the following reclaimed water categories: general requirements (e.g., land application, impoundments, commercial and industrial uses), use in both natural and constructed wetlands, and groundwater recharge (direct and surface percolation). The Washington State standards are some of the most comprehensive and technically sound reclaimed water standards in the United States.

The file below contains the latest version of the Water Reclamation and Reuse Standards developed by

SPOTLIGHT

[Reclaimed Water Rule Making](#)

NEW! [Reclaimed Water Facilities MAP & Information](#)

[Subscribe to the Reclaimed Water ListServ](#)

[2009 Report to the Legislature Water Rights Impairment Standards for Reclaimed Water](#)

[Water Smart, Not Water Short - 5 Ways to Secure Water for Washington's Future](#)





FEEDBACK

Rule Making

[Water Quality](#) > [Rule Making](#) > Overview of the Reclaimed Water Rule Making

Chapter 173-219 WAC Reclaimed water

Overview of rule making

Water Quality Program is proposing a new rule, Chapter 173-219 Washington Administrative Code (WAC) Reclaimed Water, directed by the state Legislature under Chapter 90.46 Revised Code of Washington. The purpose is to establish an efficient, effective and consistent statewide implementation framework, including standards and permit requirements. The rule-making process initiated in 2006 was suspended by the Governor under two consecutive Executive Orders from 2010 through December 2012. Ecology reactivated the rule-making process in June 2014 with an estimated implementation of an adopted rule in late 2016.

Process of development

Ecology's process for developing a rule includes gathering input from affected stakeholders and the public, and following the steps for rule adoption.

- [Timeline for Rule Making](#) - Timeline of rule making steps required in State law.
- [Documents for Rule Making](#) - Links to all official rule adoptions documents.

ADDITIONAL RULE INFORMATION

CONTACTS

Dennis McDonald
Project Lead
360-407-6321
ReclaimedWater@ecy.wa.gov

Subscribe to the [E-mail ListServ](#) to receive updates

RELATED LINKS

Previous Rule Activity:
[Reclaimed Water Rule Making History 2006 - 2010](#)

References

[State Law](#)

NEW! [The Reclaimed Water Rule FAQ](#)

[Reclaimed Water](#)

RULE MAKING

Overview of the Reclaimed Water Rule Making

- Timeline
- Documents
- Public Involvement
- Advisory Committee
- Resources

RELATED ECOLOGY PROGRAM

Water Quality

