

# Welcome to Phase II

## Municipal Stormwater Permit Reissuance Discussions

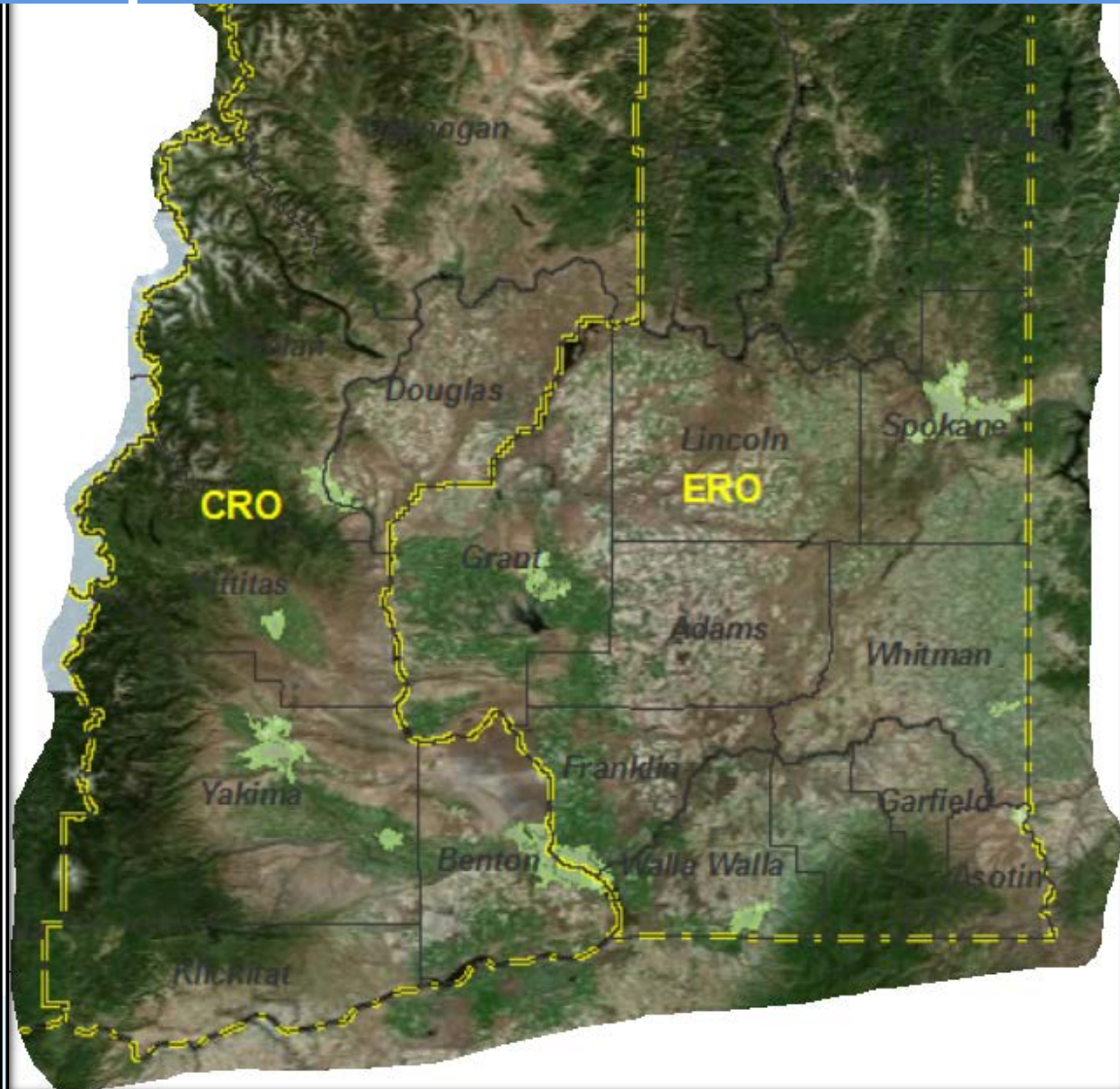
- Please sign in
- Handouts on tables
- Select a seat
  - We will have small group discussions.
  - Please try to mix up your seats so that there is a range of representation at each group.



# Reissuance of Eastern Washington Phase II Municipal Stormwater Permit

Moses Lake  
4.5.18

Webinar  
4.11.18



# Ground Rules

- Phones on silent; take calls out of the room.
- Wait to be called on before speaking.
- Minimize side conversations.
- Be respectful.
- Avoid describing site-specific or permittee-specific issues.



# To-do

- Quick permit overview
- Launch into permit reissuance
- Talk shop



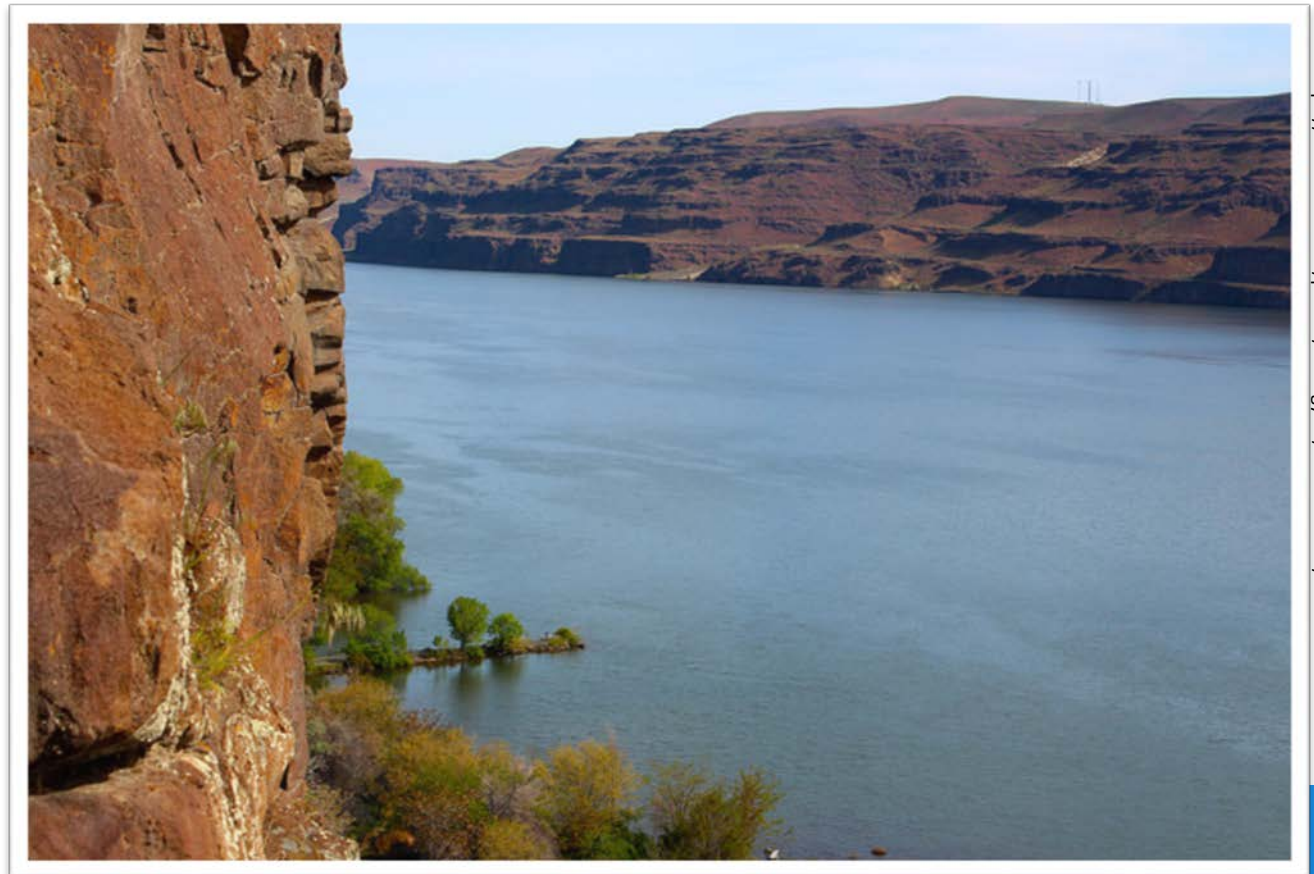


# Permit Overview



# Municipal Stormwater Permits implement federal and state rules

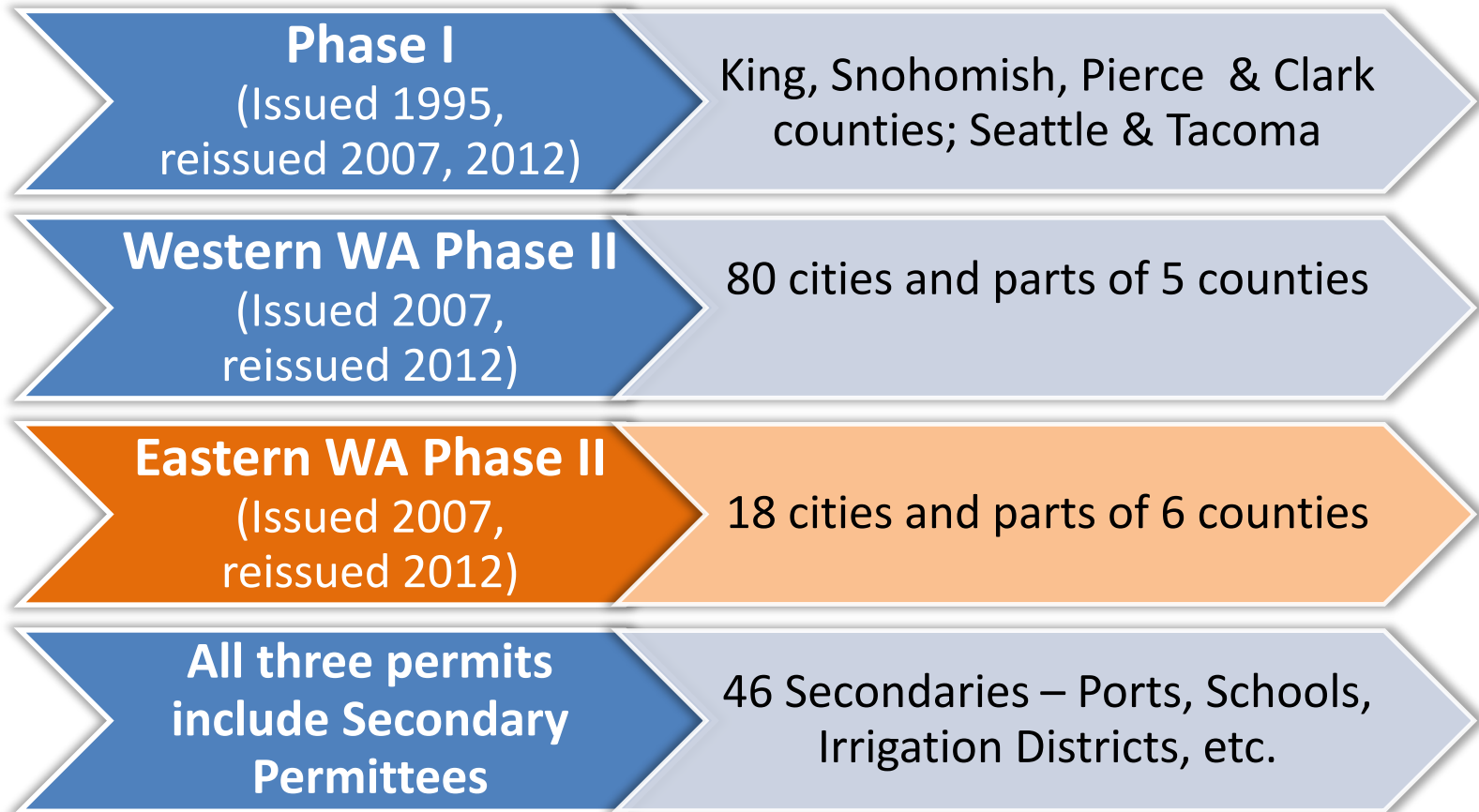
- *Clean Water Act*
- *State Water Pollution Control Act*



<https://www.flickr.com/photos/ecologywa/36539608414/>



# Municipal Stormwater Permits



# Permit Sections

The permit regulates discharges from small publicly owned municipal separate storm sewer systems (MS4s).

S1. Permit Coverage & Permittees

S2. Authorized Discharges

S3. Responsibilities of Permittees

S4. Compliance With Standards

S5. Stormwater Management Program

S6. Secondary Permittee Requirements

S7. Compliance With TMDLs

S8. Monitoring

S9. Reporting Requirements

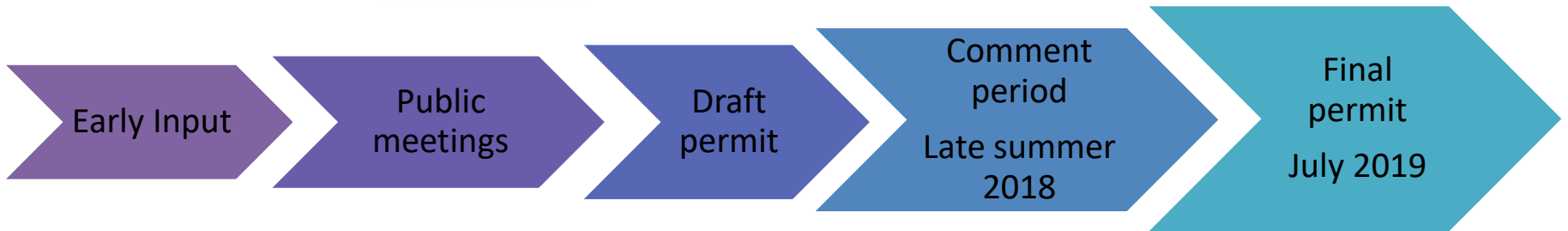






# Permit Reissuance

# Reissuance Process



# 2019 reissuance philosophy

- Improve existing permit framework by:
  - **Maintaining** requirements that are working to allow for proper establishment and implementation on the local level.
  - **Refining** permit language so that the requirements are easier to follow to ensure compliance (requirements less likely to be missed or misunderstood).
  - **Enhancing** requirements with smart and effective advancements that prevent pollution and will improve water quality.



# Not in the proposal today

- No proposed change to the 1 acre threshold
- No significant changes to:
  - controlling runoff sections construction/post-construction
  - S.1-4, General conditions, appendices



# Potential new permittees

- Evaluating for 2019 permit coverage:
  - Kittitas County
  - Benton County
  - Grant County
  - College Place
  - Grandview
  - Cheney





# Proposed changes to S5

- Initial thinking - Not an exhaustive list
- Revised formatting throughout
- Statewide consistency – where appropriate



# Public Education & Outreach

- Clarifications to target audiences
  - Program focused on source control at businesses



# IDDE – Mapping: overall list

- Revised format
- Outfalls –
  - Definition: to a surface water
  - size and material
- Discharge points: designed to infiltrate
- Permanent stormwater facilities
- Connections to public MS4s and to private storm systems
- Electronic format



# IDDE - Mapping

- Outfalls – proposed definition



means a point source as defined by 40 CFR 122.2 at the point where a discharge leaves the Permittee's MS4 and enters a surface receiving waterbody or surface receiving waters.

Outfall does not include pipes, tunnels, or other conveyances which connect segments of the same stream or other surface waters and are used to convey primarily surface waters (i.e., culverts).





# IDDE - Mapping

- Outfalls – collect size and material





# IDDE - Mapping

- Discharge points
  - means the location where a discharge leaves the Permittee's MS4 through the Permittee's MS4 facilities/BMPs designed to infiltrate.



Photo credit: Ray Latham



# IDDE - Mapping

- Permanent stormwater treatment and flow control facilities



Photo credit: Ray Latham





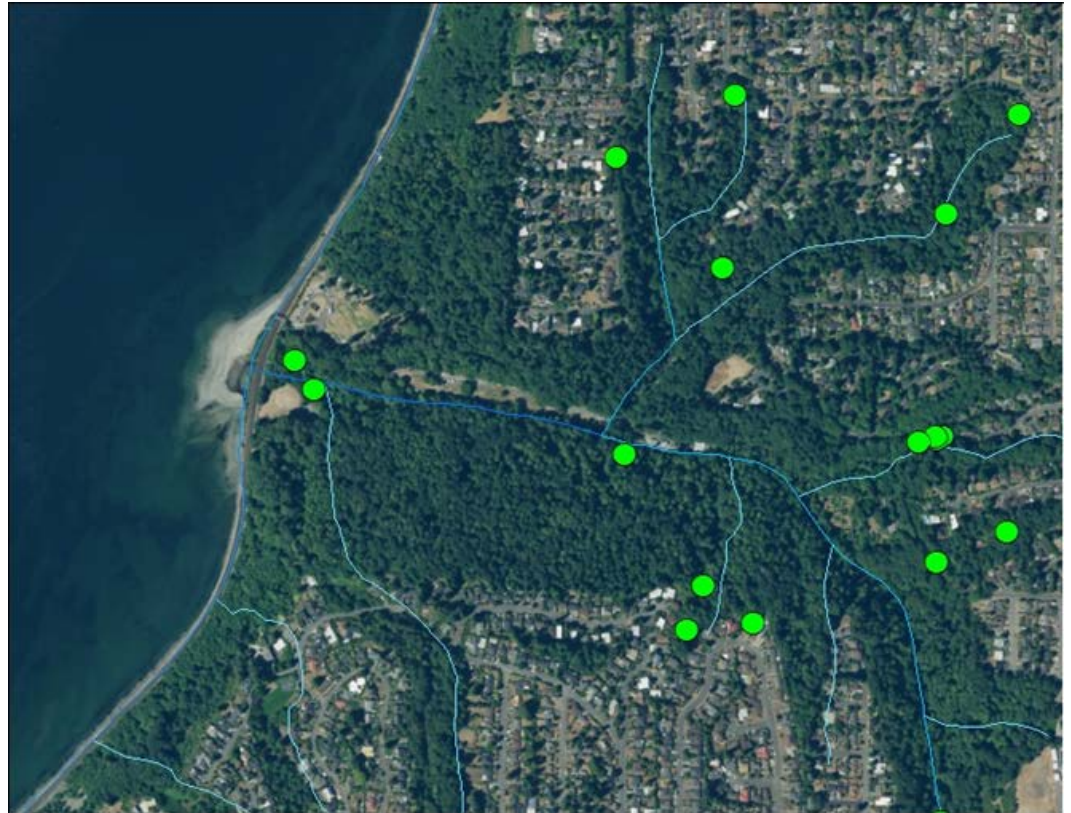
# IDDE - Mapping

- Connections to public MS4s and to private storm systems



# IDDE - Mapping

- Electronic format



# IDDE - Authority

- Authority to require source control BMPs at existing businesses



<https://www.pexels.com/photo/scrap-metal-trash-litter-scrappyard-128421/>





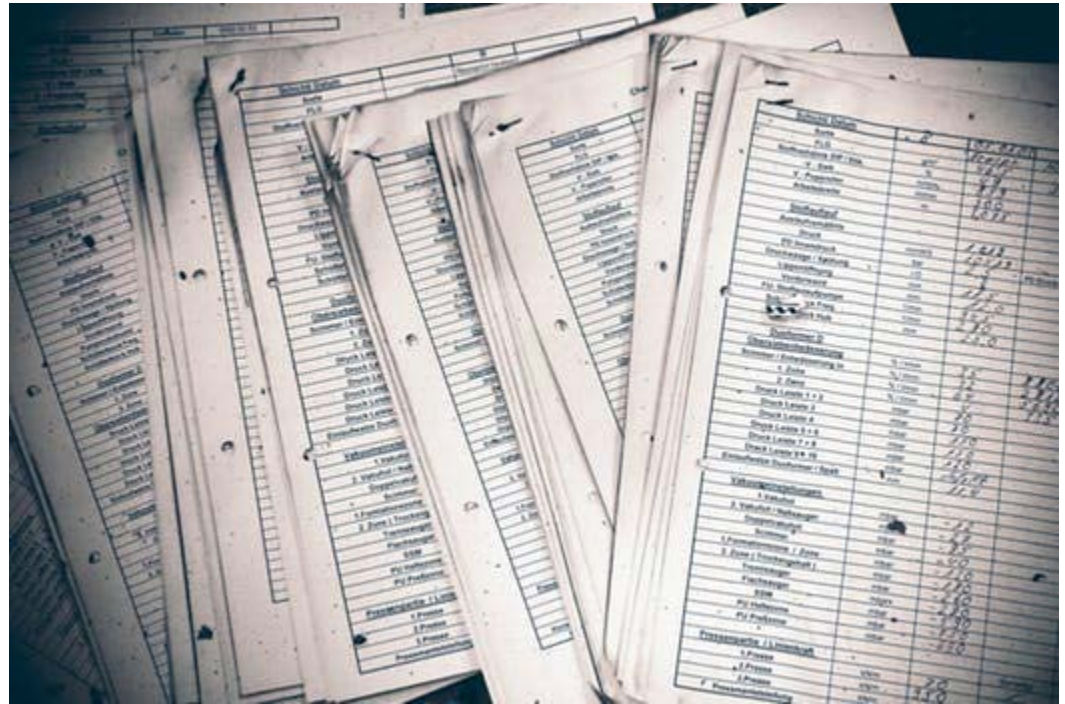
# IDDE - Reporting

- Online reporting form



# Controlling Runoff

- Consolidated training & recordkeeping requirements



# Operation & Maintenance

- More specificity on SWPPPs for Material storage areas, heavy equipment storage areas and maintenance areas



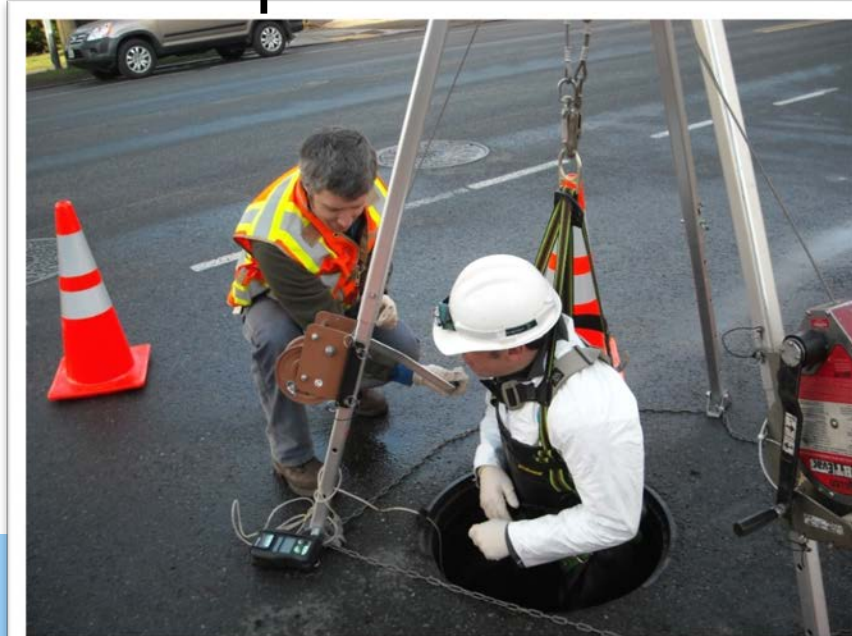
Photo credit: Ray Latham





# S8. Monitoring and Assessment

- Continuing studies identified in 2014 permit
- Clarity on participation
- Identify 1 new study to begin implementing at end of permit



# What else?

- Updates to Annual report questions
- Updates to Appendix 2 – TMDL Requirements





# Duty to Reapply!

- Coming soon – due Feb 1, 2019



<https://unsplash.com/photos/GillivvLkty>



# Questions





# Next Steps

- Develop formal draft Permit for late summer 2018
- Next, review comments, prepare responses, and final Permits for summer 2019
- Future Communication
  - SW listserv – [sign up](#)
  - Webpage
  - Ecology's Permit manager

