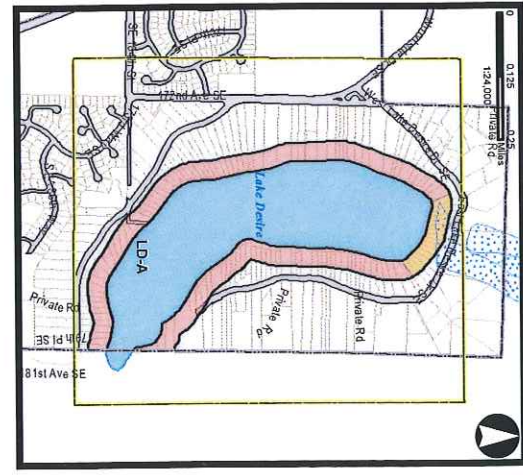
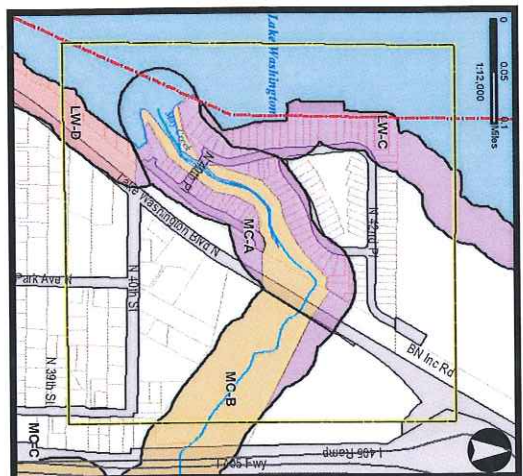
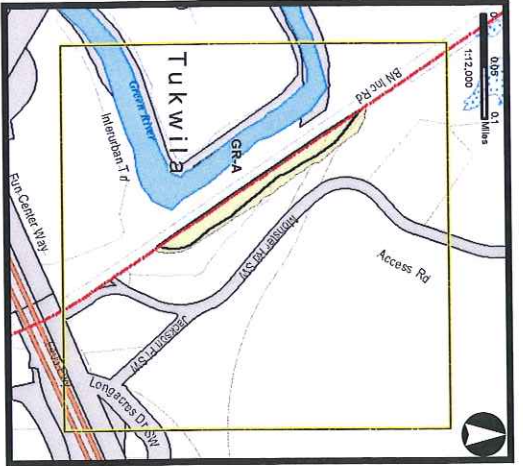
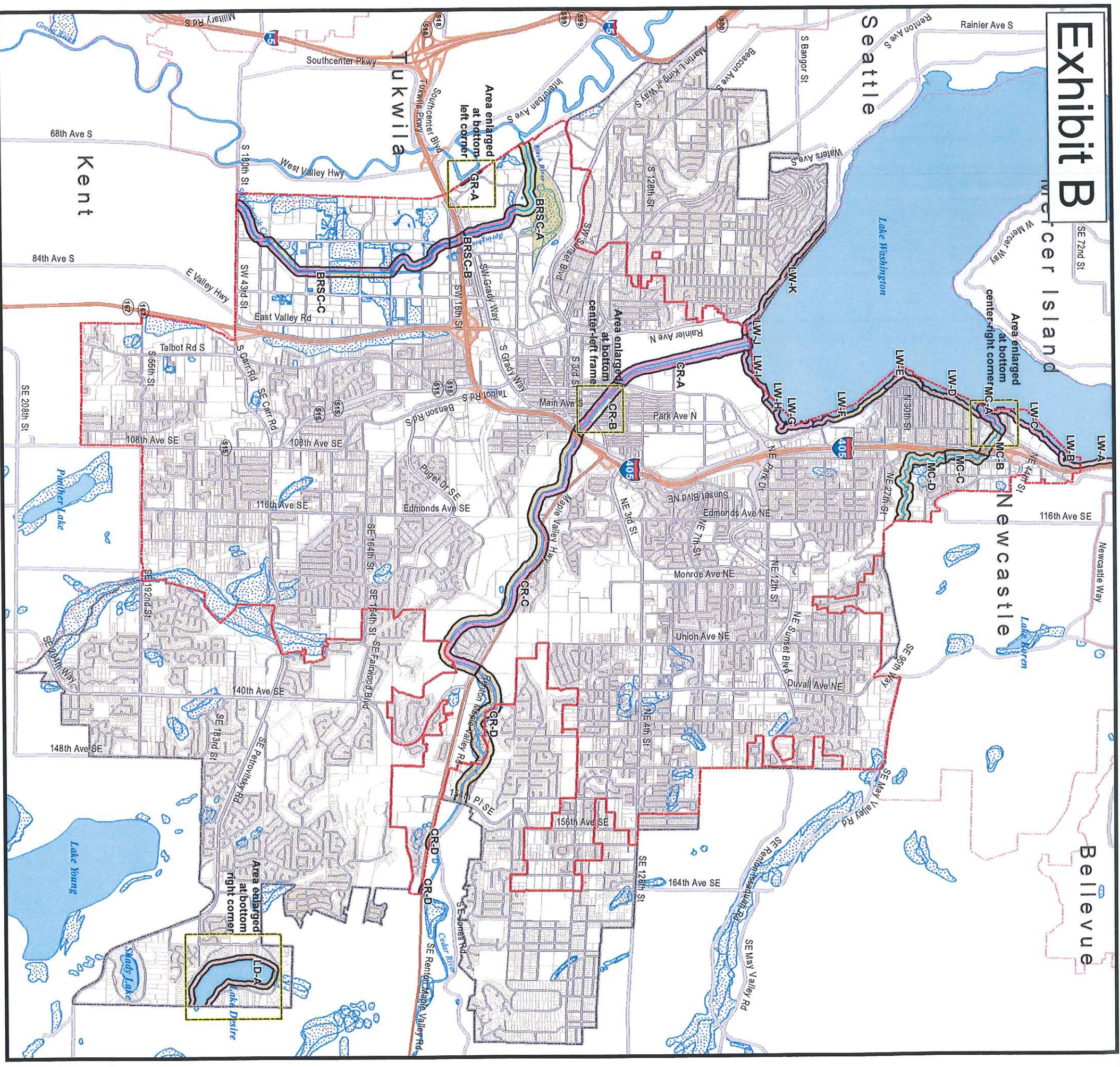


# Exhibit B



## Renton Shoreline Environment Overlays

This map depicts the approximate location and extent of areas subject to the SMP. The actual extent of shoreline jurisdiction requires a site-specific evaluation to identify the ordinary high water mark and any associated wetlands. The location of the 20 dft limit is from USGS (1998), Floodplain and Floodway extent are based on FEMA mapping and the Lower Green River Mapping Study by King County. Wetland locations are approximate and based on existing City/regional inventories; additional wetlands may be present that are not shown on the maps and some of the areas shown as wetlands may not meet the wetland criteria. This map makes no claim as to whether wetlands are associated with the shoreline or not. This map should not be used as a definitive source on associated Wetlands under Shoreline Management Act jurisdiction. Such a determination will be made on a case-by-case basis.



- City Limits
- PAA Boundary
- Wetlands
- Natural
- Shoreline High Intensity
- Shoreline Isolated High Intensity
- Shoreline Single Family
- Urban Conservancy
- BRSC - Black River/Sprngbrook Creek Reaches
- GR - Cedar River Reaches
- LD - Lake Desire Reaches
- LW - Lake Washington Reaches
- MC - May Creek Reaches