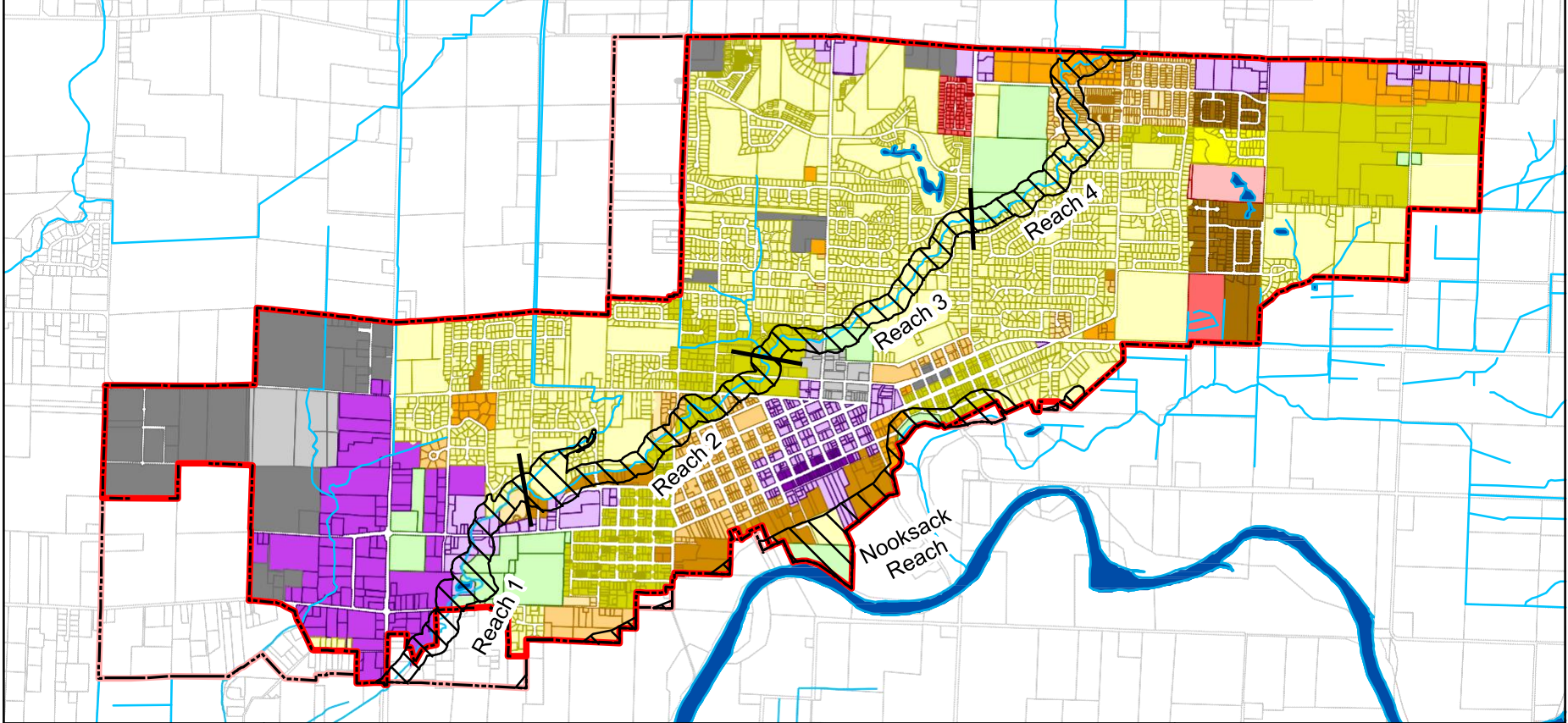




Zoning					
	PU - Public		TR-RW - Travel & Recreational Vehicles		RS-100 - 10,000 sq. ft. lot
	ID - Industrial District		MH - Manufactured Housing		RS-84 - 8,400 sq. ft. lot
	IBZ - Industrial Business Zone		RM-1 - Multi-family (Duplex)		RS-72 - 7,200 sq. ft. lot
	CSL - Local Commercial Services		RM-2 - Multi-family (up to 4 du/bldg)		County
	CSR - Regional Commercial Services		RM-3 - Multi-family (16 du/acre)		
	HBD - Historic Building District		RM-4 - Multi-family (24 du/acre)		
			RMD - Residential Mixed Density		



- Streams and Ditches
- SMP Jurisdiction
- Lynden City Limits
- Lynden UGA
- Rivers and Lakes

Shoreline jurisdiction boundaries depicted on this map are approximate. They have not been formally delineated or surveyed and are intended for planning purposes only. Additional site-specific evaluation may be needed to confirm/verify information shown on this map.

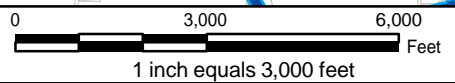
All data are approximate and should be used for relative location reference only.
 All data except SMP Jurisdiction obtained from the City of Lynden.

Prepared for:



City of Lynden

Prepared by:

City of Lynden Zoning

Lynden SMP	Figure 10
7/16/10	