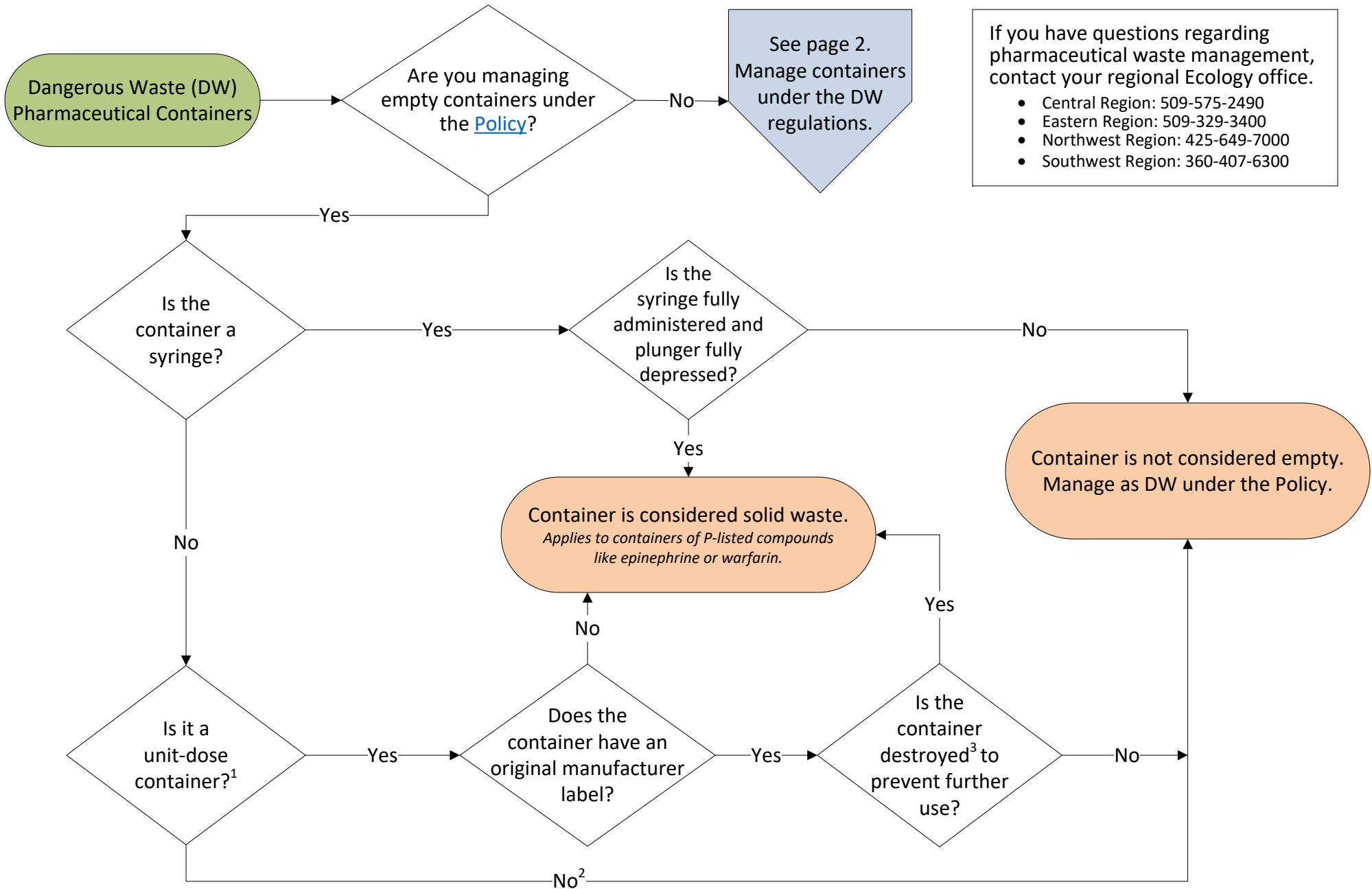


# Management of Dangerous Waste Pharmaceutical Containers

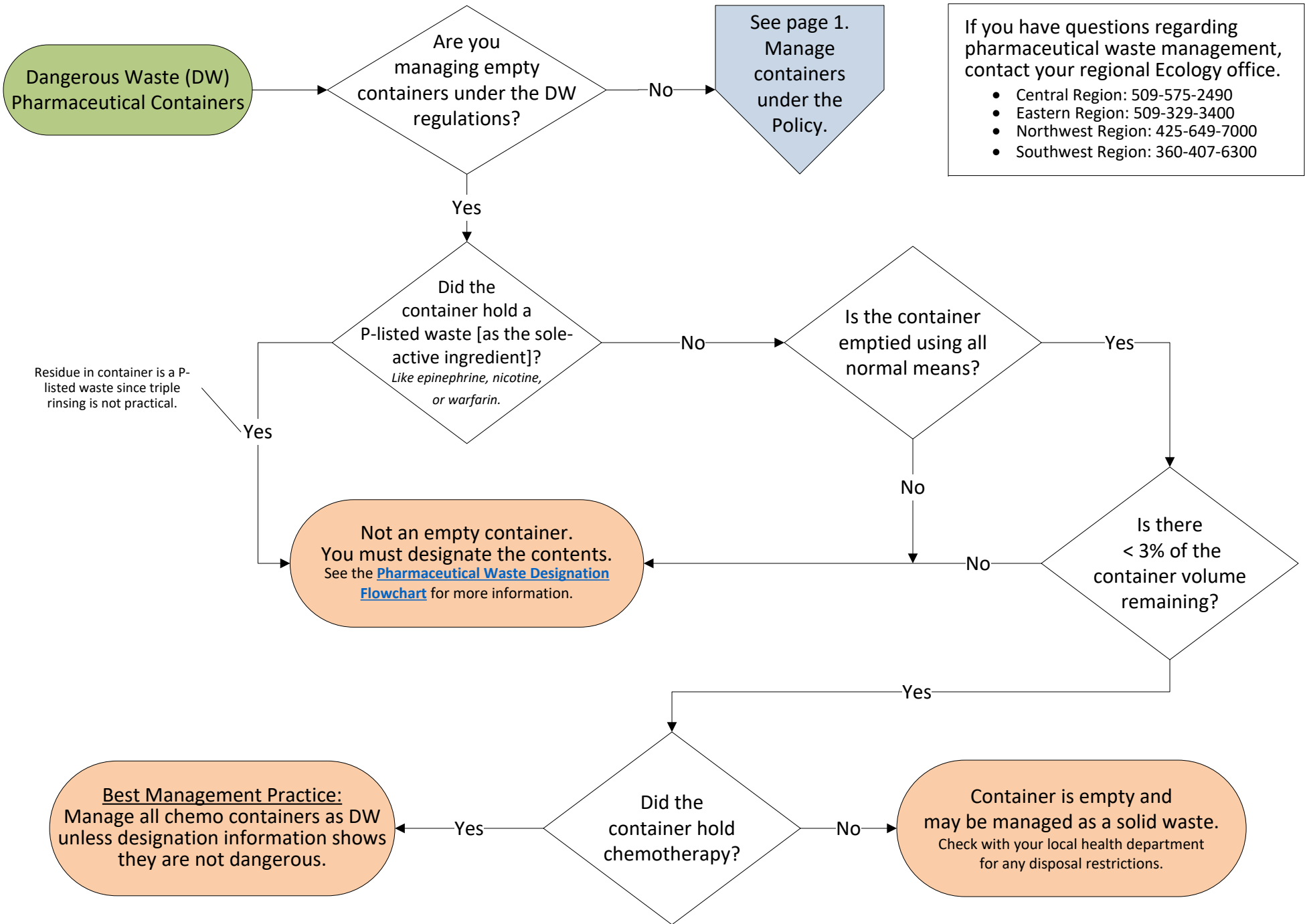


If you have questions regarding pharmaceutical waste management, contact your regional Ecology office.

- Central Region: 509-575-2490
- Eastern Region: 509-329-3400
- Northwest Region: 425-649-7000
- Southwest Region: 360-407-6300

<sup>1</sup> **Unit-dose containers** include vials, ampoules, patches, packets, cups, blister packs, or bottles holding ≤ 1.0 L or ≤ 1,000 pills.  
<sup>2</sup> **Other containers** include IV bags and tubing, nebulizers, inhalers, aerosols, tubes of ointments, gels, and creams, or bottles holding > 1.0 L or > 1,000 pills.  
<sup>3</sup> **Destroyed** means unable to hold a similar pharmaceutical again (e.g. broken blister pack or crushed vial). Defacing the label is not sufficient.

# Management of Dangerous Waste Pharmaceutical Containers



If you have questions regarding pharmaceutical waste management, contact your regional Ecology office.

- Central Region: 509-575-2490
- Eastern Region: 509-329-3400
- Northwest Region: 425-649-7000
- Southwest Region: 360-407-6300