

FY19 WATER QUALITY APPLICANT TRAINING EAGL OVERVIEW



Questions?

- Ask anytime
- Contact Sheet
- We're really nice



SAW, EAGL, & Resources

<https://secureaccess.wa.gov/>

<http://www.ecy.wa.gov/programs/wq/funding/funding.html>



Ecology website update

Agency-wide website update

- ecy.wa.gov is changing to ecology.wa.gov
- New look, new navigation, new organization
- Old links will break.
 - EAGL, documents, and resources.
- Does not affect agency email
- Stay tuned to the ListServ



EAGL updates

Updates and Changes in EAGL

- “Multiple Session” support
- Spell checking
- Updated Training Manual
- Environmental Review Form
- Improved hover text
- Mapping Tool



EAGL Environmental
Review Form

This form is for uploading required environmental documentation – such as that necessary to complete the State Environmental Review Process (SERP).
This form is provided for non-sensitive cultural review documents only.
Do not upload sensitive information (records, maps, and other information) that identify the location of archaeological sites, historic sites, artifacts, or the sites of traditional religious, ceremonial, or social uses and activities of affected Indian tribes.
Send sensitive information directly to your Ecology Region Project Manager or the Environmental Review Coordinator.
Sensitive information is not subject to public disclosure.

Instructions:
Please upload the appropriate documents.
The type of project and the funding source you're applying for or have received determines the Environmental and Cultural Review documents that you must upload.
When done, click the **SAVE** button.

If you have a wastewater or stormwater facility project, and you are applying for or have received a loan from the CWSRF, when applicable upload the following documents.

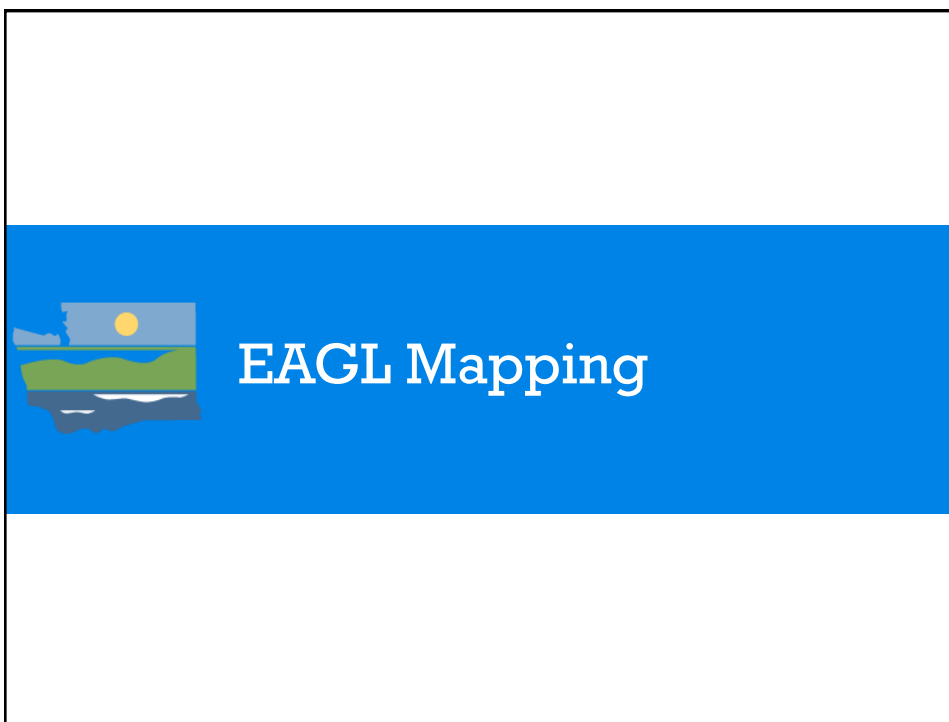

- SEPA Checklist
- SEPA Threshold Determination
- Affidavit of Publication of SEPA Threshold Determination
- Public Meeting Documents
- SERP Coversheet
- SERP Checklist
- SERP Determination
- Other SERP/SEPA Documentation
- Ecology 05-05/106 Review Form
- EZ-1 Form (If Ecology is the lead agency, an Ecology 05/05-106 Form is required)
- Cultural Review Final Determination
- DAHP Letter of Concurrence
- Completed activity/location specific Inadvertent Discovery Plan (IDP).
An IDP is not associated with consultation and is required in the event of a discovery during ground disturbance.

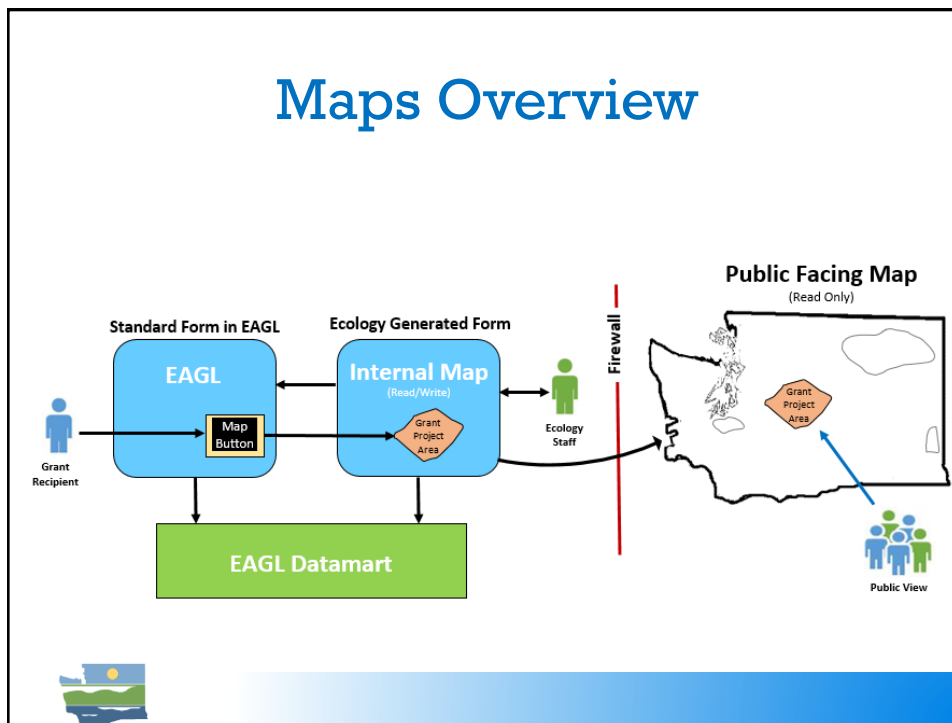
In addition to the above documents, if you are required to prepare a federal cross cutter report, when applicable upload the following documents.

- Cross Cutter Report
- Cross Cutter Checklist
- Cross Cutter Final Determination

If you have a stormwater facility project, and you are applying for or have received funding via SFAP but not CWSRF, when applicable upload the following documents.

- SEPA Checklist
- SEPA Threshold Determination
- Affidavit of Publication of SEPA Threshold Determination
- Ecology 05-05/106 Review Form
- EZ-1 Form (If Ecology is the lead agency, an Ecology 05/05-106 Form is required)





Mapping Interface

- EAGL mapping is deploying in late August.
- Map will be accessible on the “Mapping Information” Form.
- Recommend waiting until map is implemented.
- Stay tuned to the ListServ



What is project area?

Primary Theme	Project Area (anticipated during Application)
Nonpoint	HUC 12
Stormwater Facility	Jurisdiction
Stormwater Activity	Jurisdiction
Wastewater Facility	Facility/location of work
On-site sewage systems	Jurisdiction
Algae Control	Lake
Aquatic Invasive Plant	Lake

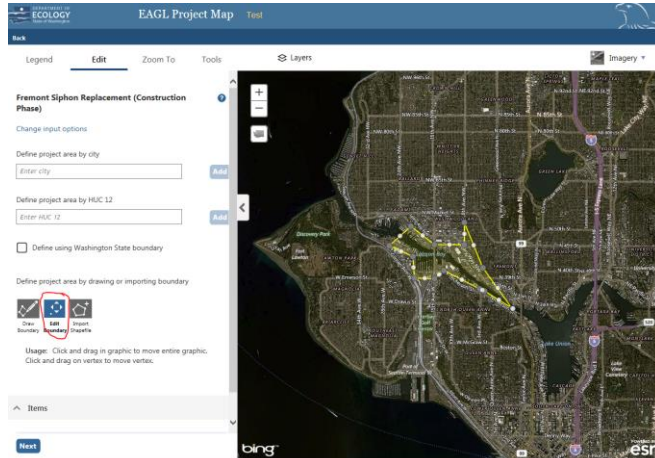
*Planning projects should be mapped as the jurisdiction the plan applies to.



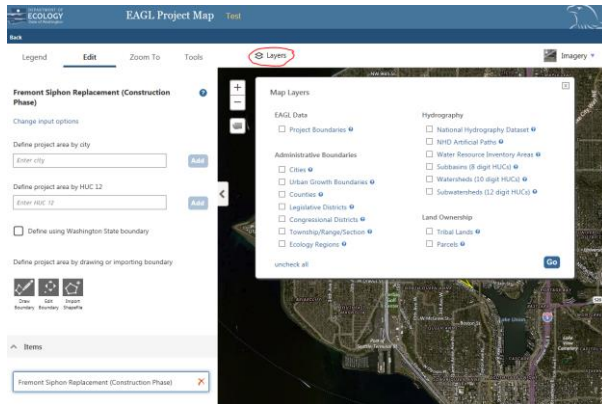
Draw your project Area



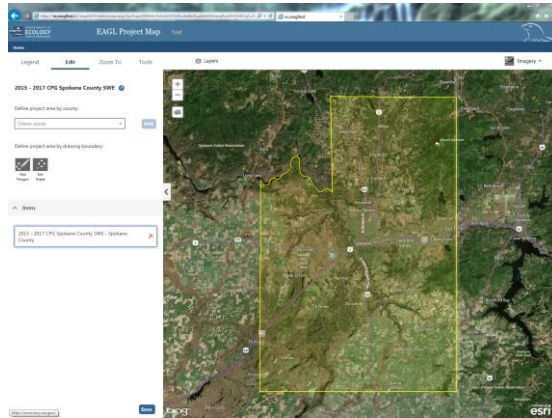
Edit Boundary



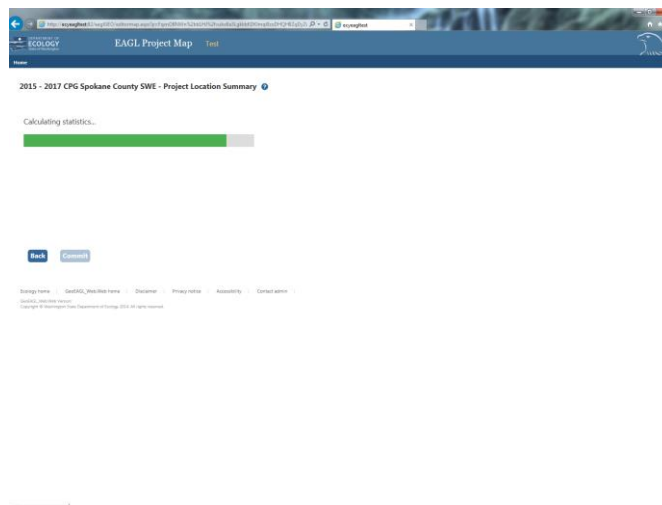
View different layer



Select a Predefined Area-County



Calculating....



Auto Fill!

2015 - 2017 CPG Spokane County SWE - Project Location Summary

Ecology Region:	Area %	Allocation %	Congressional District:	Area %	Allocation %
ERD	100%	100%	District 5	100%	100%
County:	Area %	Allocation %	WRIA:	Area %	Allocation %
Spokane County	100%	100%	34 (Palouse)	21%	31%
			43 (Upper Crab-Wilson)	3%	3%
Legislative District:	Area %	Allocation %	54 (Lower Spokane)	14%	24%
District 3	2%	2%	55 (Little Spokane)	22%	25%
District 4	18%	18%	56 (Hangman)	24%	24%
District 6	21%	21%	57 (Middle Spokane)	15%	15%
District 7	23%	23%			
District 9	36%	36%			

Back Commit

Ecology Home EAGL, 2015-2017 SWE Dashboard Project Setup Account Info Contact Us

Spokane County Water Resources
Copyright © Washington State Department of Ecology 2014. All rights reserved.

[Map Summary and Legend](#)

EAGL roles

What is your role?

- A role gives you certain powers within EAGL
- Roles are different than contacts
- You decide who is in each role
- Every “contact” person and anyone assigned a “role” has to have a SAW account and EAGL access



What are the roles?

- Authorized official
- Contractor*
- Recipient Project Manager
- Recipient Financial Manager
- Writer*
- Reader



What my role allows me to do in EAGL:	Document Roles					
	Authorized Official	Contractor	Recipient Project Manager	Recipient Financial Officer	Writer	Reader
Applications & Amendments (Parent Documents)						
Control Access to Applications	X					
Read Application Forms	X	X	X	X	X	X
Edit Application Forms	X	X	X		X	
Initiate Applications	X	X				
Submit Applications	X					
Cancel Applications	X					
Payment Requests & Progress Reports (Sub-documents)						
Initiate PR/PR	X		X	X		
Read PR/PR	X	X	X	X	X	X
Edit PR/PR	X		Progress Report Only	Payment Request/ Form D Only	X	
Submit PR/PR	X		X	X		
Cancel PR/PR	X		X	X		
Equipment Purchase Reports & Closeout Reports (Sub-documents)						
Initiate Sub-documents	X		X			
Read Sub-documents	X	X	X	X	X	X
Edit Sub-documents	X		X		X	
Submit Sub-documents	X		X			
Cancel Sub-documents	X		X			
Change the Status of Sub-documents	X		X			

Roles at different levels

- organization,
- application/agreement
- sub documents

- Roles are inherited by new documents.
- Roles can be changed.



Best Practices for EAGL roles

- Always have at least 2 Authorized Officials
- Assign your staff as the Authorized Official, Financial Officer, and Project Manager
- Assign others as “Contractors”



EAGL uploads

Uploaded Documents


- Specific technical documents and approvals
- Detailed budget and supporting documentation
- Map(s) of the project area
- Project Schedule
- Any other supporting information




Document Management and Uploading Guidance

- What should I name my files?
 - Descriptive names that identify content
 - Your agency name is not necessary
 - The EAGL number is not necessary
 - DO NOT USE SYMBOLS (~ &)
 - Avoid Spaces





Questions?



Check Ecology website
for resources

Breakout Sessions Start Downstairs in 15 minutes

- Nonpoint Grant Activities
- Wastewater Facilities/Loans
- Stormwater Grant Funded

