

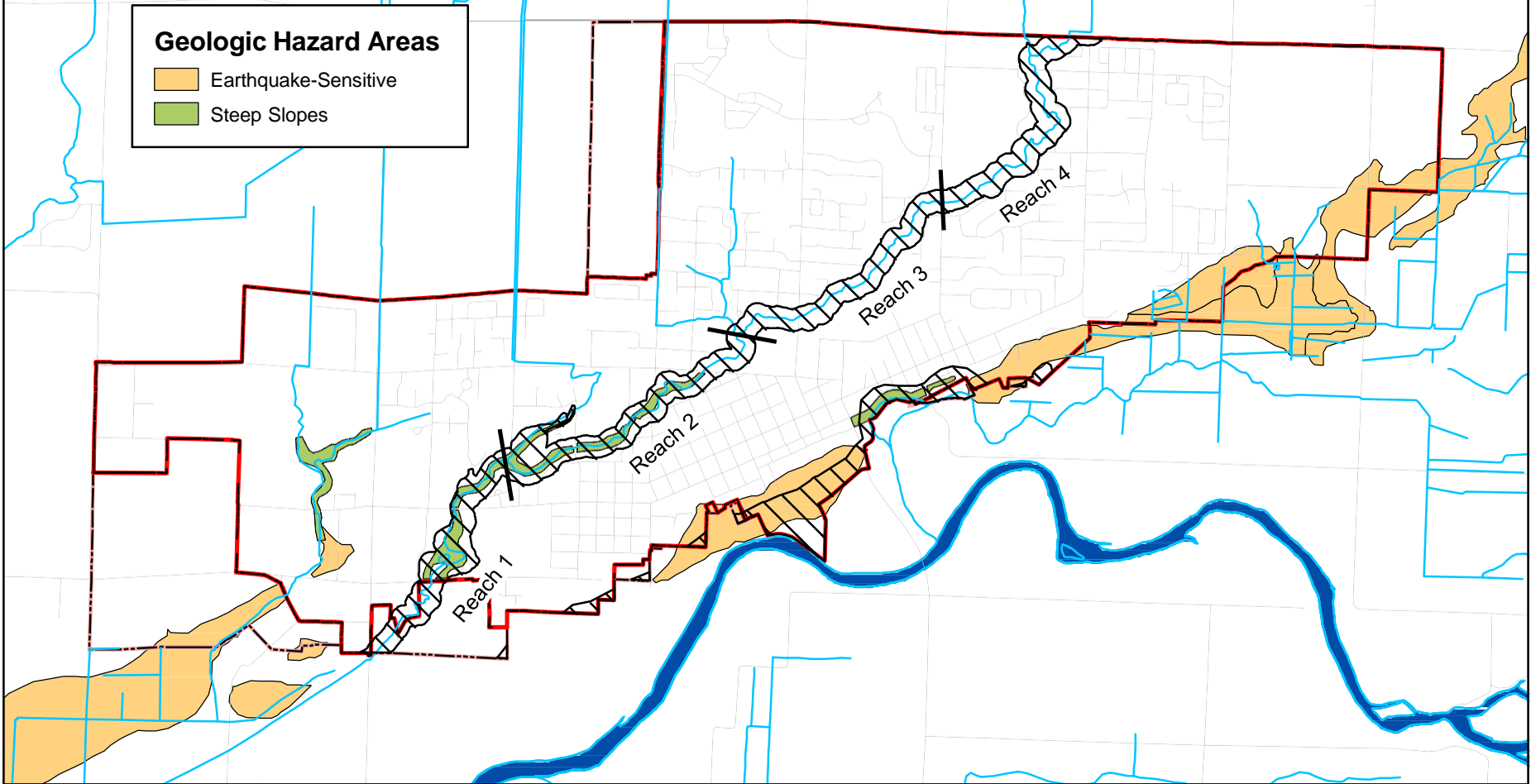










### Geologic Hazard Areas

-  Earthquake-Sensitive
-  Steep Slopes



-  Ditches and Streams
-  Streets
-  SMP Jurisdiction
-  Lyden City Limits
-  Lyden UGA
-  Nooksack River

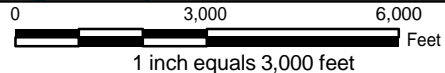
Shoreline jurisdiction boundaries depicted on this map are approximate. They have not been formally delineated or surveyed and are intended for planning purposes only. Additional site-specific evaluation may be needed to confirm/verify information shown on this map.

All data are approximate and should be used for relative location reference only.  
Geologic Hazard Areas data obtained from 2002 City of Lyden Inventory of Critical Areas report and GIS.



Prepared for:  
**City of Lyden**

Prepared by:  
**whatcom**  
ENVIRONMENTAL



**Geologic Hazard Areas**  
Lyden SMP  
8/18/10

**Figure 12**