

**ANNUAL PRE-TREATMENT PLAN
FOR ZOSTERA JAPONICA CONTROL ON COMMERCIAL
CLAM BEDS IN WILLAPA BAY
FOR
WILLAPA BAY SHELLFISH**

Submitted to:

Washington Department of Ecology

March 1, 2016

Author:

David Beugli

WGHOGA Project Coordinator

Annual Pre-Treatment Plan

The locations of acreage planned for treatment in 2016, including GPS coordinates of each corner of the area, size in acres of each area and cooperating adjacent land owners are shown in Table 1.

Table 1. Coordinates of the overall area where japonica control will be implemented. Actual acres to be treated will be less than those indicated by the overall bed boundaries.

Bed Name	Parcel	Acres	Corner Coordinates		Cooperating Landowners
			Latitude	Longitude	
E147 E231 N1/2	79005000147 79005001231	10	46.6098	-124.0394	Long Island Oyster co.
			46.6097	-124.0353	Heckes Clams Inc.
			46.6107	-124.0384	Coast Seafoods Co.
			46.6105	-124.0353	Grassy Island Clam Farms
			46.6121	-124.0384	
			46.6111	-124.0384	
			46.6111	-124.0329	
			46.6115	-124.0332	
			46.6119	-124.0337	
			46.6131	-124.0338	
			46.6128	-124.0346	
TL601	11112255601	4	46.6123	-124.0376	
			46.4188	-124.0169	
			46.4189	-124.0181	
			46.4175	-124.0179	
TL52	12112755052	1	46.4176	-124.0166	
			46.5019	-124.0291	
			46.5019	-124.0276	
			46.5046	-124.0272	
			46.5046	-124.029	

Annual Pre-Treatment Plan (Maps)

Figures 1-3 show the proposed locations of japonica treatments in 2016. In 2015 treatments occurred on bed E147.



Figure 1. Parcels 79005000147, 79005001231

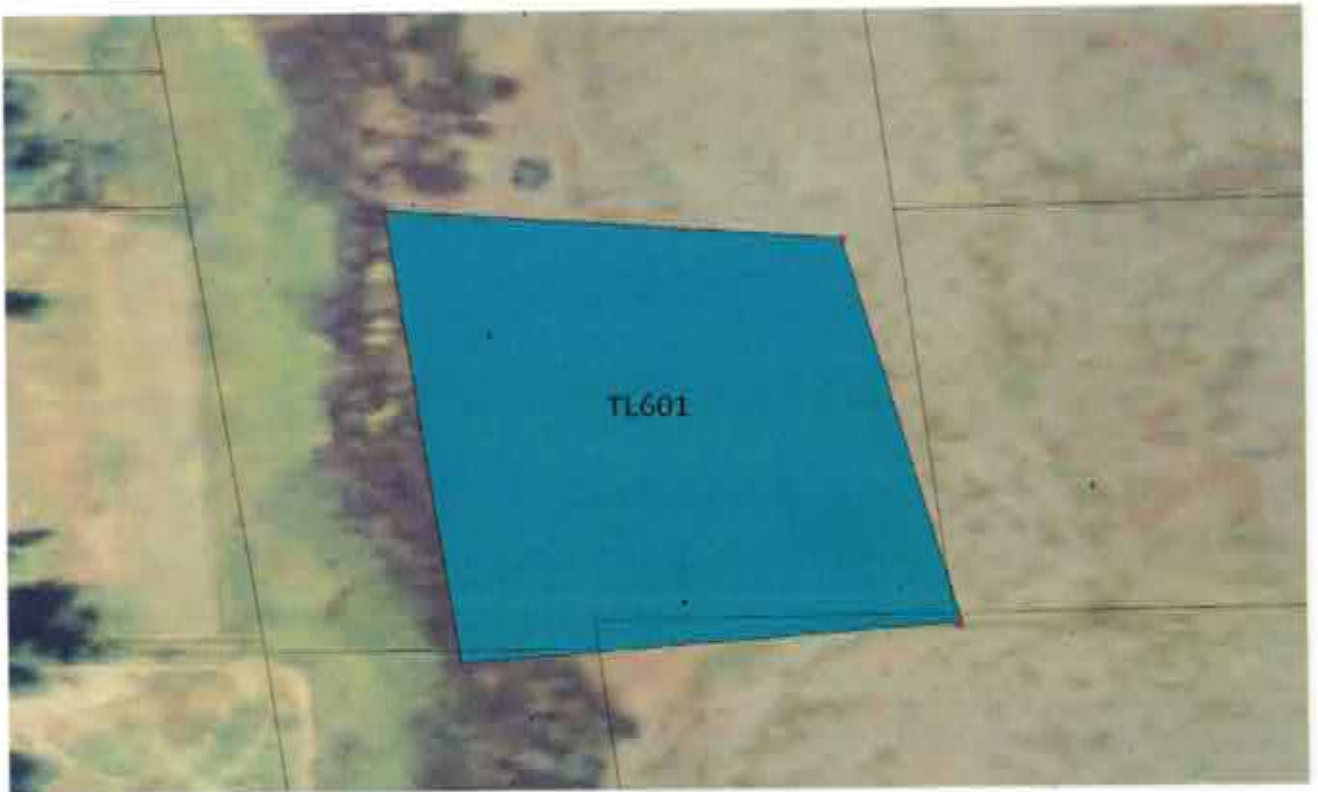


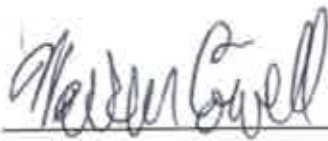
Figure 2. Parcel 1112255601

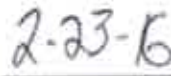


Figure 3. Parcel 12112755052.

Signature Requirements

I certify under penalty of law, that this document and all attachments were prepared under my direction or supervision in accordance with a system designed to assure that qualified personnel properly gathered and evaluated the information submitted. Based on my inquiry of those persons directly responsible for gathering information, the information in the Pretreatment Plan is, to the best of my knowledge and belief, true, accurate, and complete and will be updated as necessary. I am aware that there are significant penalties for submitting false information, including the possibility of fine and imprisonment of knowing violations.





Signature

Date