

The Washington Materials Management & Financing Authority is required to file an annual report with the Washington State Department of Ecology. This workbook contains data and information requested in order to meet compliance with WAC 173-900-800 and additional information required via passage of SHB 1498 in April of 2013. The workbook is designed to provide data and information in the format listed in the index outlined below, as specified in WAC 173-900-800 and as amended with the passage of SHB 1498.

**\*NOTE:** All figures and data in this report are estimates based on actual source documents including processor invoices with actual weights and charges, collector bills of lading showing estimated weights - converted to actual weights after verification through processor and transporter receipts, and other information received from collectors and processors including "collector logs" which include source and volume estimates by entity type.

### Workbook Index

TAB  
---->

1. Total weight (in pounds) of covered electronic products (CEPs), including orphans, for the 2015 program year including documentation verifying collection and processing for:
  - a. CEP pounds collected, by type, by county
  - b. CEP recycled pounds, un-recycled residuals, and reused - by ALL program Direct Processors
  - c. Standard Plan CEP materials disposition - mass balance report
2. Total weight of CEPs received from each nonprofit charitable organization primarily engaged in the business of reuse and resale used by the Standard Plan.
3. Total weight of CEPs received in large quantities from small businesses, small governments, charities and school districts.
4. A list of collection services provided in each county and each city with a population of greater than 10,000 and the parties who operated them.
5. Processor information:
  - a. A list of all direct processors used; **(see section 1b.)**.
  - b. The weight of CEPs processed by each direct processor; **(see section 1b.)**.
  - c. A description of the processes and methods used by each direct processor to recycle the CEPs including a description of the processing and facility locations.
  - d. A compliance audit report meeting the requirements in WAC 173-900-365 for each direct processor listed in the Standard Plan.  
(Note: A link to the Standard Plan containing these audit reports as posted on the Ecology web site can be used to meet this requirement.)
7. A brief description of the educational and promotional efforts that were undertaken to inform covered entities about where and how to reuse and recycle their CEPs.
8. The results of sampling as required in WAC 173-900-900.
9. Total weight of unwanted electronic products, electronic components, and electronics scrap that have been exported from Washington state to countries that are not members of the Organization for Economic Cooperation and Development or the European Union.
10. A list of manufacturers that are participating in the Standard Plan.
11. Documentation of work done with direct processors used by the Standard Plan to promote and encourage the design of electronic products that are less toxic and contain components that are more recyclable.
12. Any information available regarding the reuse of CEPs through the E-Cycle Washington program.
13. Program revenue and cost.
14. Signature of the Authority.

Covered Electronic Products (CEP's) collected, including orphan products. All 2015 WMMFA transactions	CEP Pounds collected by type		CEP Pounds collected by County			CEP Pounds collected by County by CEP Type			
	2015 NET pounds by CEP type collected excluding pounds sent to reuse by collectors	Percent of total pounds by CEP type 2015	WA State County	Pounds collected 2015 excluding reuse at the collector level	Percent of total pounds by county 2015	Computers	Monitors	Televisions	TOTAL NET pounds by county - all CEP types
<b>TELEVISIONS</b>			Adams	25,706	0.0%	2,724	2,298	20,684	25,706
Household TV	35,148,861		Asotin	111,312	0.2%	3,000	17,210	91,102	111,312
School District TV	22,965		Benton	892,432	1.9%	111,022	138,545	642,865	892,432
Small Business TV	21,870		Chelan	499,374	1.2%	26,500	47,520	425,354	499,374
<b>Total TELEVISIONS</b>	<b>16,230</b>		Clallam	453,756	1.0%	40,200	68,522	345,034	453,756
	<b>35,209,926</b>	<b>82.7%</b>	Clark	3,034,203	7.4%	204,520	264,522	2,565,161	3,034,203
			Columbia	6,553	0.0%	894	485	5,174	6,553
			Cowlitz	748,120	1.7%	40,225	64,522	643,373	748,120
			Douglas	83,124	0.2%	3,491	8,225	71,408	83,124
			Ferry	13,230	0.0%	1,220	2,022	9,988	13,230
<b>MONITORS</b>			Franklin	345,723	0.9%	29,220	47,250	269,253	345,723
Household Monitors	4,265,000		Garfield	19,602	0.0%	1,120	1,990	16,492	19,602
School District Monitors	60,724		Grant	191,096	0.4%	4,822	8,114	178,160	191,096
Small Business Monitors	13,366		Grays Harbor	392,580	0.9%	20,056	42,550	329,974	392,580
Small Government Monitors	17,326		Island	657,951	1.6%	66,225	64,890	526,836	657,951
<b>Total MONITORS</b>	<b>4,356,416</b>	<b>10.2%</b>	Jefferson	237,631	0.5%	14,560	10,580	212,491	237,631
			King	13,735,379	33.6%	1,103,051	997,256	11,635,072	13,735,379
			Kitsap	1,124,428	2.8%	80,012	134,522	909,894	1,124,428
			Kittitas	301,724	0.6%	2,041	13,225	286,458	301,724
<b>COMPUTERS (includes laptops)</b>			Klickitat	51,373	0.2%	5,200	6,420	39,753	51,373
Household Computers	2,958,820		Lewis	554,577	1.3%	25,000	13,925	515,652	554,577
School District Computers	41,872		Lincoln	32,640	0.1%	4,106	3,250	25,284	32,640
Small Business Computers	9,934		Mason	86,446	0.3%	10,255	16,522	59,669	86,446
Small Government Computers	8,879		Okanogan	40,804	0.1%	10,001	12,266	18,537	40,804
<b>Total COMPUTERS</b>	<b>3,019,505</b>	<b>7.1%</b>	Pacific	131,453	0.2%	6,000	8,524	116,929	131,453
			Pend Oreille	50,992	0.1%	6,580	6,296	38,116	50,992
			Pierce	5,137,824	11.5%	302,996	845,003	3,989,825	5,137,824
			San Juan	99,537	0.3%	8,406	8,922	82,209	99,537
			Skagit	535,825	1.4%	19,433	27,558	488,834	535,825
			Skamania	45,456	0.1%	6,200	5,877	33,379	45,456
			Snohomish	5,107,907	11.6%	345,889	582,000	4,180,018	5,107,907
			Spokane	2,336,810	5.5%	232,001	521,920	1,582,889	2,336,810
			Stevens	107,151	0.2%	4,400	4,650	98,101	107,151
			Thurston	2,181,697	4.8%	108,822	184,000	1,888,875	2,181,697
			Wahkiakum	4,507	0.0%	549	0	3,958	4,507
			Walla Walla	470,299	1.1%	41,878	31,200	397,221	470,299
			Whatcom	1,293,309	2.9%	52,400	57,430	1,183,479	1,293,309
			Whitman	237,282	0.6%	15,964	5,400	215,918	237,282
			Yakima	1,206,034	2.7%	58,522	81,005	1,066,507	1,206,034
<b>Total pounds CEPs by type before reuse:</b>	<b>42,585,847</b>	<b>100%</b>		<b>42,585,847</b>	<b>100.0%</b>	<b>3,019,505</b>	<b>4,356,416</b>	<b>35,209,926</b>	<b>42,585,847</b>
REUSE AT PROCESSOR LEVEL -->	<b>71,400</b>			<b>71,400</b>					

**Covered electronic products (CEP's)  
processed. All 2015 WMMFA transactions by  
all processors**

	ACE METAL COMPANY	E-WASTE LLC	ECS REFINING	EWC GROUP	ELECTRONIC REC INT (ERI)	IMS ELECT RECYCLING	TOTAL RECLAIM	TOTAL POUNDS - ALL PROCESSORS	
	Qty	Qty	Qty	Qty	Qty	Qty	Qty	Qty	Percent
<b>All quantities in net pounds</b>									
<b>CEP program pounds sent to, and COLLECTED by, each processor</b>	3,692,451	2,806,023	3,297,397	4,209,899	1,023,442	5,762,819	21,793,816	<b>42,585,847</b>	
<b>CEP pounds RECYCLED by each processor and on hand awaiting processing</b>	3,414,871	2,805,823	3,490,540	4,209,899	877,742	5,402,647	21,722,416	41,923,938	98.45%
<b>*CEP pounds processor sent to REUSE through refurbishment or re-sale</b>	0	0	0	0	0	0	71,400	71,400	0.17%
<b>NON-RECYCLED residuals including wood, etc. (details in sec. 1.c.)</b>	70,805	200	13,632	0	145,700	360,172	0	590,509	1.39%
<b>TOTAL pounds recycled, reused, and in process</b>	<b>3,485,676</b>	<b>2,806,023</b>	<b>3,504,172</b>	<b>4,209,899</b>	<b>1,023,442</b>	<b>5,762,819</b>	<b>21,793,816</b>	<b>42,585,847</b>	<b>100.0%</b>

**\*NOTE: Approximately 89% of pounds sent to reuse and refurbishment is handled at the collector level - never reaching processors. (See section 12. Re-use)**

<b>INBOUND: Total plan pounds 2015</b> <small>(all CEP's collected and sent in for processing)</small>	Computers	Laptops (est)	E-Readers	E-Tablets	Portable DVD	Monitors	Televisions	Other - in transit from collectors	TOTAL
	A	B	C	D	E	F	G	H	sum A-H
<u>PLAN</u> pounds collected by the WMMFA tendered to all processors 2015	2,895,705	123,800	0	0	0	4,356,416	35,209,926	0	42,585,847

**PROCESSOR DISPOSITION: as of Dec. 31 2015**

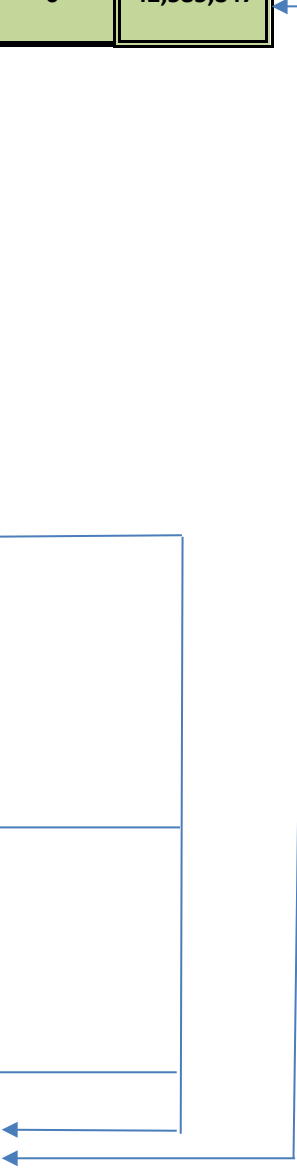
<b>RECOVERED / RECYCLED / IN PROCESS</b>	
CRT GLASS	19,237,549
CIRCUIT BOARDS	4,084,258
BATTERIES	18,586
MERCURY CONTAINING DEVICES	322,451
PLASTIC	5,918,376
METALS	9,701,550
WOOD	1,842,188
CEP's staged / short term stored awaiting processing	337,389
CEP's in transit awaiting downstream processing	461,591
<b>TOTAL RECOVERED / RECYCLED/ IN PROCESS:</b>	<b>41,923,938</b>

<b>REUSED</b>	
COMPUTERS - (Desktop or integrated units)	63,500
LAPTOPS	2,700
TELEVISIONS	5,200
MONITORS	
PARTS - SWAPPED OUT TO WORKING UNIT	
<b>TOTAL REUSED:</b>	<b>71,400</b>

<b>UNRECYCLED RESIDUAL (to landfill)</b>	
WOOD - (mainly cabinets from CRT and Rear Projection TV)	509,537
NON-RECYCLABLE PLASTIC	8,700
MISCELLANEOUS PACKAGING (soiled cardboard, paper, and particle board)	72,272
<b>TOTAL RESIDUAL:</b>	<b>590,509</b>

<b>TOTAL RECOVERED, RECYCLED, REUSED, RESIDUAL:</b>	<b>42,585,847</b>
---	-------------------

NOTE: Total INBOUND pounds must equal total OUTBOUND / IN PROCESS pounds





**Covered Electronic Products (CEP's) collected for recycling by the WMMFA in 2015 from non-profit charitable organizations primarily engaged in re-use through re-sale.**

All net pounds collected and paid for in 2015 - total - weights verified at processing

Does NOT include pounds of working or refurbished devices a charity collected as part of the program and sent to reuse (see section 12 for reuse estimates at collector level)

<b>Charity Name</b>	<b>CEP Pounds</b>
ADAMS COUNT DEVELOPMENTAL DISABILITIES - OTHELLO	25,724
ARC OF SW WASHINGTON	4,682
ATWORK! ISSAQUAH	121,635
AKTION CLUB OF ANACORTES	81,140
DESERET IND-FEDERAL WAY	231,176
DESERET INDUSTRIES-SHORELINE	170,421
GOODWILL EVERETT OUTLET	4,053,282
GOODWILL HAWKS PRAIRIE (Tacoma)	767,457
GOODWILL IND - PASCO	1,033,330
GOODWILL INDUST-SEATTLE	3,559,236
GOODWILL INDUST INLAND NW-SPOKANE	2,196,346
GOODWILL INDUST OUTLET-TACOMA	7,736,527
GOODWILL INDUSTRIES - WENATCHEE	156,412
GOODWILL INDUSTRIES VANCOUVER	2,042,803
GOODWILL MULLEN LANDFILL TACOMA	735,162
HABITAT FOR HUMANITY - ELLENSBURG	29,897
HABITAT FOR HUMANITY - YAKIMA	19,070
INTERCONNECTION.ORG -SEATTLE	605,760
NORTHWEST CENTER INDUSTRY - SEATTLE	254,171
SALVATION ARMY ABERDEEN	45,823
SALVATION ARMY ARC SEATTLE	476,447
SALVATION ARMY BELLINGHAM	43,802
SALVATION ARMY SPOKANE VALLEY	89,455
SALVATION ARMY WENATCHEE	106,130
SALVATION ARMY YAKIMA	73,813
SIGHT CONNECTION SEATTLE	69,877
ST.VINCENT DE PAUL-BREMERTON	148,335
ST.VINCENT DE PAUL-LYNNWOOD	176,142
ST.VINCENT DE PAUL-SEATTLE	256,806
ST.VINCENT DE PAUL-TACOMA	223,344
ST.VINCENT DE PAUL - MONROE	80,359
STANWOOD CAMANO KIWANIS	30,978
SUNNYSIDE CHRISTIAN THRIFT STORE	24,944
UNION GOSPEL MISSION-YAKIMA	98,362
VISITING NURSES THRIFT - CENTRALIA	84,208
VISITING NURSES THRIFT - CHEHALIS	9,386
YWCA SECOND BEGINNING TREASURES - WENATCHEE	5,566
<b>Total Pounds collected for recycling after deducting reuse pounds:</b>	<b>25,868,008</b>

## WMMFA Ecycle registered WA Collection sites throughout 2015

<i>Collector Site Name</i>	<i>Operating Organization</i>	<i>EPR Number</i>	<i>County</i>
Experience Merchandise Thrift Store	Adams County Developmental Disabilities	EPR00547	Adams
CEP Recycle Asotin Co.	HHH	EPR00471	Asotin
Clayton-Ward Company Kennewick	Clayton-Ward Company	EPR00526	Benton
Clayton-Ward Company Richland	Clayton-Ward Company	EPR00526	Benton
Goodwill 7-11 Donation Center	Goodwill Industries of the Columbia	EPR00871	Benton
Goodwill Albertsons Donation Center	Goodwill Industries of the Columbia	EPR00871	Benton
Goodwill Columbia Center Mall Donation Center	Goodwill Industries of the Columbia	EPR00871	Benton
Goodwill Fred Meyer Donation Center	Goodwill Industries of the Columbia	EPR00871	Benton
Goodwill Kennewick Store	Goodwill Industries of the Columbia	EPR00871	Benton
Goodwill Plaza Donation Center	Goodwill Industries of the Columbia	EPR00871	Benton
Goodwill Richland	Goodwill Industries of the Columbia	EPR00871	Benton
Goodwill Richland Walmart Donation Center	Goodwill Industries of the Columbia	EPR00871	Benton
Goodwill Westgate Shopping Center Donation Center	Goodwill Industries of the Columbia	EPR00871	Benton
Horn Rapids Sanitary Landfill	City of Richland - Landfill	EPR00490	Benton
Stay Tan West	Stay Tan West	EPR00542	Benton
Value Village Kennewick	Savers Recycling, Inc.	EPR00484	Benton
City of Chelan Recycle Center	City of Chelan	EPR00514	Chelan
Goodwill Valley College Donation Center	Goodwill Industries of the Columbia	EPR00871	Chelan
Goodwill Wenatchee Store	Goodwill Industries of the Columbia	EPR00871	Chelan
Pacific Power Batteries Wenatchee	Pacific Power Batteries	EPR00967	Chelan
Salvation Army Wenatchee	The Salvation Army Seattle DHQ	EPR00470	Chelan
YWCA Store	YWCA Wenatchee Valley	EPR01064	Chelan
EcycleNW	EcycleNW	EPR00262	Clallam
Goodwill Port Angeles Store	Tacoma Goodwill	EPR00290	Clallam
Goodwill Sequim Store	Tacoma Goodwill	EPR00290	Clallam
Central Transfer and Recycling Center	Columbia Resource Company	EPR00754	Clark
Evergreen Reuse Technologies	Evergreen Reuse Technologies, LLC	EPR01152	Clark
Goodwill - 205 and Mill Plain Donation Center	Columbia Willamette Goodwill	EPR00343	Clark
Goodwill - Big Al's Donation Center	Columbia Willamette Goodwill	EPR00343	Clark
Goodwill 162nd Donations Express	Columbia Willamette Goodwill	EPR00343	Clark
Goodwill 38th and Main	Columbia Willamette Goodwill	EPR00343	Clark
Goodwill Battleground Store	Columbia Willamette Goodwill	EPR00343	Clark
Goodwill Cascade Park Donation Center	Columbia Willamette Goodwill	EPR00343	Clark
Goodwill Felida Country Store Donation Center	Columbia Willamette Goodwill	EPR00343	Clark
Goodwill Fishers Landing Store	Columbia Willamette Goodwill	EPR00343	Clark
Goodwill Hazel Dell Store	Columbia Willamette Goodwill	EPR00343	Clark
Goodwill Mac Arthur and Mill Plain	Columbia Willamette Goodwill	EPR00343	Clark
Goodwill Northgate Shopping Center	Columbia Willamette Goodwill	EPR00343	Clark
Goodwill Orchards Donation Center	Columbia Willamette Goodwill	EPR00343	Clark
Goodwill Salmon Creek Store	Columbia Willamette Goodwill	EPR00343	Clark
Goodwill SE Vancouver Donation Center	Columbia Willamette Goodwill	EPR00343	Clark
Goodwill The Glen	Columbia Willamette Goodwill	EPR00343	Clark
Goodwill Vancouver Outlet	Columbia Willamette Goodwill	EPR00343	Clark



<i>Collector Site Name</i>	<i>Operating Organization</i>	<i>EPR Number</i>	<i>County</i>
Goodwill Vancouver Store	Columbia Willamette Goodwill	EPR00343	Clark
Goodwill Washougal Donation Center	Columbia Willamette Goodwill	EPR00343	Clark
IMS Electronics Recycling	IMS Electronics Recycling	EPR00311	Clark
The Arc of Southwest Washington	Arc of Southwest Washington	EPR01138	Clark
Value Village Vancouver	Savers Recycling, Inc.	EPR00484	Clark
Washougal Transfer Station	Columbia Resource Company	EPR00754	Clark
West Vancouver Materials Recovery Center	Columbia Resource Company	EPR00754	Clark
Columbia County Transfer Station	Columbia County Public Works	EPR01028	Columbia
Goodwill Longview Store	Tacoma Goodwill	EPR00290	Cowlitz
Waste Control Recycling	Waste Control Recycling	EPR00443	Cowlitz
Goodwill East Wenatchee Store	Inland Northwest Goodwill	EPR00334	Douglas
Inchelium Community Center	Colville Confederated Tribes	EPR00578	Ferry
Keller Community Center	Colville Confederated Tribes	EPR00578	Ferry
Torboy Transfer Station	Ferry County Waste Management	EPR00487	Ferry
Goodwill Pasco Store	Goodwill Industries of the Columbia	EPR00871	Franklin
Goodwill Pasco Walmart Donation Center	Goodwill Industries of the Columbia	EPR00871	Franklin
Tommy's Steel & Salvage	Tommy's Steel & Salvage	EPR00519	Franklin
CEP Recycle Garfield County	HHH	EPR00471	Garfield
CDSI Transfer & Recycle	Consolidated Disposal Service, Inc.	EPR00279	Grant
Consolidated Disposal Service	Consolidated Disposal Service, Inc.	EPR00279	Grant
Goodwill Moses Lake Store	Inland Northwest Goodwill	EPR00334	Grant
Goodwill Aberdeen Store	Tacoma Goodwill	EPR00290	Grays Harbor
Salvation Army Aberdeen	The Salvation Army Seattle DHQ	EPR00470	Grays Harbor
Tek EaZe	Tek EaZe	EPR00571	Grays Harbor
Waste Connections Inc dba Aberdeen Sanitation	Waste Connections Inc dba Aberdeen Sanitation	EPR00522	Grays Harbor
Camano Island Transfer Station & Recycle Park	Island County Public Works SW Division	EPR00530	Island
Coupeville Island Recycling	Island Recycling	EPR00517	Island
Freeland Island Recycling	Island Recycling	EPR00517	Island
North Whidbey Drop Box Station	Island County Public Works SW Division	EPR00530	Island
Goodwill Port Townsend Store	Tacoma Goodwill	EPR00290	Jefferson
The Recycle Center	Skookum Environmental Service	EPR00267	Jefferson
3R Technology	3R Technology	EPR00370	King
Busby Junk Removal	Busby Junk Removal, LLC	EPR00466	King
COMMAND.COMputers E-Cycle	COMMAND.COMputers	EPR00865	King
Deseret Industries - Federal Way	Deseret Industries	EPR00546	King
Deseret Industries - Shoreline	Deseret Industries	EPR00546	King
EcoLights Northwest	Total Reclaim, Inc.	EPR00544	King
Enumclaw Recyclers	Enumclaw Recyclers	EPR00834	King
E-Recycle Mercer Island Site	E-Recycle	EPR00774	King
Friendly Earth	Friendly Earth	EPR00824	King
Goodwill Auburn Store	Tacoma Goodwill	EPR00290	King
Goodwill Ballard Donation Center	Seattle Goodwill	EPR00310	King
Goodwill Ballard Store	Seattle Goodwill	EPR00310	King
Goodwill Bellevue Store	Seattle Goodwill	EPR00310	King
Goodwill Bothell Donation Center	Seattle Goodwill	EPR00310	King



<i>Collector Site Name</i>	<i>Operating Organization</i>	<i>EPR Number</i>	<i>County</i>
Goodwill Burien Store	Seattle Goodwill	EPR00310	King
Goodwill Capitol Hill	Seattle Goodwill	EPR00310	King
Goodwill Des Moines Store	Tacoma Goodwill	EPR00290	King
Goodwill Federal Way Store	Tacoma Goodwill	EPR00290	King
Goodwill Interbay Donation Center @ Whole Foods	Seattle Goodwill	EPR00310	King
Goodwill Issaquah Donation Center	Seattle Goodwill	EPR00310	King
Goodwill Juanita Store	Seattle Goodwill	EPR00310	King
Goodwill Kent Outlet Store	Tacoma Goodwill	EPR00290	King
Goodwill Kent Store	Tacoma Goodwill	EPR00290	King
Goodwill Maple Valley Store	Tacoma Goodwill	EPR00290	King
Goodwill Newport Hills Donation Center	Seattle Goodwill	EPR00310	King
Goodwill Northgate Donation Center	Seattle Goodwill	EPR00310	King
Goodwill Poulsbo Donation Center	Seattle Goodwill	EPR00310	King
Goodwill Ravenna Donation Center	Seattle Goodwill	EPR00310	King
Goodwill Redmond Ridge Donation Center	Seattle Goodwill	EPR00310	King
Goodwill Renton Store	Seattle Goodwill	EPR00310	King
Goodwill Sammamish Donation Center	Seattle Goodwill	EPR00310	King
Goodwill Seattle Store	Seattle Goodwill	EPR00310	King
Goodwill Shoreline Donation Center	Seattle Goodwill	EPR00310	King
Goodwill Shoreline Store	Seattle Goodwill	EPR00310	King
Goodwill Snoqualmie Ridge	Seattle Goodwill	EPR00310	King
Goodwill South Lake Union	Seattle Goodwill	EPR00310	King
Goodwill Southcenter Store	Seattle Goodwill	EPR00310	King
Goodwill Totem Lake Donation Center	Seattle Goodwill	EPR00310	King
Goodwill University Village Donation Center	Seattle Goodwill	EPR00310	King
Goodwill West Seattle Donation Center	Seattle Goodwill	EPR00310	King
Goodwill Woodinville P&R Donation Center	Seattle Goodwill	EPR00310	King
I Recycle	PC Trades Brokers LLC	EPR01056	King
InterConnection Computer Reuse	InterConnection Computer Reuse	EPR00369	King
NW Center Truck at Albertson's Bellevue	Northwest Center	EPR00411	King
NW Center Truck at Carnation IGA Grocery	Northwest Center	EPR00411	King
NW Center Truck at Cottage Lake Safeway	Northwest Center	EPR00411	King
NW Center Truck at Hagens Food Store	Northwest Center	EPR00411	King
NW Center Truck at Interbay Whole Foods Market	Northwest Center	EPR00411	King
NW Center Truck at Madrona Grocery Outlet	Northwest Center	EPR00411	King
NW Center Truck at Pine Lake QFC	Northwest Center	EPR00411	King
NW Center Truck at QFC North Bend	Northwest Center	EPR00411	King
NW Center Truck at Queen Anne Diamond Parking	Northwest Center	EPR00411	King
NW Center Truck at Redmond QFC	Northwest Center	EPR00411	King
NW Center Truck at Walmart Overflow Parking South	Northwest Center	EPR00411	King
NW Center Truck at West Seattle Key Bank Parking	Northwest Center	EPR00411	King
NW Center Truck at Wilderness Village QFC	Northwest Center	EPR00411	King
NW Center Truck in Wedgwood	Northwest Center	EPR00411	King
PC Recycle - Bellevue	PC Recycle	EPR00220	King
PC Recycle - Woodinville	PC Recycle	EPR00220	King

<i>Collector Site Name</i>	<i>Operating Organization</i>	<i>EPR Number</i>	<i>County</i>
PC Recycle-Bridle Trails Shopping Center	PC Recycle	EPR00220	King
Planet USA, LLC	Planet USA, LLC	EPR00975	King
Recology CleanScapes - Highline	InterConnection Computer Reuse	EPR00369	King
RE-PC Seattle	RE-PC	EPR00426	King
RE-PC Tukwila	RE-PC	EPR00426	King
Salvation Army Auburn Donation Site	The Salvation Army Seattle ARC	EPR00543	King
Salvation Army Ballard Fred Meyer Donation Site	The Salvation Army Seattle ARC	EPR00543	King
Salvation Army Bellevue Donation Site	The Salvation Army Seattle ARC	EPR00543	King
Salvation Army Burien Donation Site	The Salvation Army Seattle ARC	EPR00543	King
Salvation Army Federal Way Site	The Salvation Army Seattle ARC	EPR00543	King
Salvation Army Kent Donation Site	The Salvation Army Seattle ARC	EPR00543	King
Salvation Army Redmond Donation Site	The Salvation Army Seattle ARC	EPR00543	King
Salvation Army Renton Donation Site	The Salvation Army Seattle ARC	EPR00543	King
Salvation Army Renton Fred Meyer Donation Center	The Salvation Army Seattle ARC	EPR00543	King
Salvation Army Seattle ARC	The Salvation Army Seattle ARC	EPR00543	King
Salvation Army Shoreline Donation Site	The Salvation Army Seattle ARC	EPR00543	King
SightConnection	Sight Connection	EPR00895	King
Slavation Army Family Store	The Salvation Army Seattle ARC	EPR00543	King
St Vincent de Paul 1st Ave S	St Vincent de Paul Seattle/King County	EPR00525	King
St Vincent de Paul 4th Ave S	St Vincent de Paul Seattle/King County	EPR00525	King
St Vincent de Paul Aurora Ave N	St Vincent de Paul Seattle/King County	EPR00525	King
St Vincent de Paul Bothell Way NE	St Vincent de Paul Seattle/King County	EPR00525	King
St Vincent de Paul Kent	St Vincent de Paul Seattle/King County	EPR00525	King
St Vincent de Paul Renton	St Vincent de Paul Seattle/King County	EPR00525	King
Total Reclaim 6th Ave Site	Total Reclaim, Inc.	EPR00544	King
UpTekk	UpTekk	EPR00491	King
Value Village Burien	Savers Recycling, Inc.	EPR00484	King
Value Village Issaquah	Savers Recycling, Inc.	EPR00484	King
Value Village Kent	Savers Recycling, Inc.	EPR00484	King
Value Village Kirkland	Savers Recycling, Inc.	EPR00484	King
Value Village Redmond	Savers Recycling, Inc.	EPR00484	King
Value Village Seattle 15th Ave NW	Savers Recycling, Inc.	EPR00484	King
Value Village Seattle Lake City Way	Savers Recycling, Inc.	EPR00484	King
Value Village Tukwila	Savers Recycling, Inc.	EPR00484	King
Value Village Woodinville	Savers Recycling, Inc.	EPR00484	King
VIDEO ONLY - Bellevue	Video Only, Inc.	EPR00855	King
VIDEO ONLY - Federal Way	Video Only, Inc.	EPR00855	King
VIDEO ONLY - TUKWILA	Video Only, Inc.	EPR00855	King
Waste Management South King County	Waste Management of Washington	EPR00264	King
Bainbridge Island Recycling & Garbage Facility	Bainbridge Disposal	EPR00374	Kitsap
Bremerton St. Vincent dePaul	St Vincent de Paul Bremerton	EPR00494	Kitsap
Goodwill Bainbridge Island Don. Center	Seattle Goodwill	EPR00310	Kitsap
Goodwill Bremerton Store	Seattle Goodwill	EPR00310	Kitsap
Goodwill Port Orchard Store	Seattle Goodwill	EPR00310	Kitsap
Goodwill Silverdale Store	Seattle Goodwill	EPR00310	Kitsap

<i>Collector Site Name</i>	<i>Operating Organization</i>	<i>EPR Number</i>	<i>County</i>
Olympic View Transfer Station	Waste Management of Washington	EPR00264	Kitsap
Peninsula All Shred	All Shred	EPR00502	Kitsap
Goodwill Ellensburg Store	Tacoma Goodwill	EPR00290	Kittitas
Kittitas County Habitat Store	Kittitas County Habitat for Humanity	EPR00757	Kittitas
Kittitas Valley Recycling - Ellensburg	Kittitas Valley Recycling	EPR00515	Kittitas
Republic Services Div 4178 - Goldendale Transfer	Republic Services Div 4178	EPR00482	Klickitat
Goodwill Centralia Store	Tacoma Goodwill	EPR00290	Lewis
New Life Thrift Store & Building Supplies	New Life Thrift Stores	EPR01113	Lewis
Tiger Mountain Technologies	Tiger Mountain Technologies	EPR00707	Lewis
Visiting Nurses Thrift Store	Visiting Nurses Foundation	EPR00937	Lewis
Visiting Nurses Thrift Store	Visiting Nurses Foundation	EPR00937	Lewis
Lincoln County Transfer Station	Lincoln County Transfer Station	EPR00367	Lincoln
Goodwill Shelton Store	Tacoma Goodwill	EPR00290	Mason
Pay More Recycle and Salvage Inc	Pay More Recycle and Salvage	EPR01202	Mason
Green Okanagon	Green Okanogan Recycle	EPR00572	Okanogan
Methow Recycle	Methow Recycles	EPR00298	Okanogan
Nespelem Recycling Center	Colville Confederated Tribes	EPR00578	Okanogan
Omak Community Center	Colville Confederated Tribes	EPR00578	Okanogan
Pacific Solid Waste Disposal	Pacific Solid Waste Disposal Inc	EPR00371	Pacific
Royal Heights Transfer Station	Royal Heights Transfer Station	EPR00488	Pacific
Ione Transfer Station	Pend Oreille Co Public Works	EPR00404	Pend Oreille
Newport Transfer Station	Pend Oreille Co Public Works	EPR00404	Pend Oreille
Usk Transfer Station	Pend Oreille Co Public Works	EPR00404	Pend Oreille
Affordable Computer Service	Affordable Computer Service	EPR00418	Pierce
American Computer Sales	American Computer Sales and Service	EPR01099	Pierce
Goodwill 38th Street Store	Tacoma Goodwill	EPR00290	Pierce
Goodwill 6th Ave Plaza Store	Tacoma Goodwill	EPR00290	Pierce
Goodwill 72nd Street Store	Tacoma Goodwill	EPR00290	Pierce
Goodwill Bonney Lake Store	Tacoma Goodwill	EPR00290	Pierce
Goodwill Gig Harbor Donation Station	Tacoma Goodwill	EPR00290	Pierce
Goodwill Gig Harbor Store	Tacoma Goodwill	EPR00290	Pierce
Goodwill Graham Donation Station	Tacoma Goodwill	EPR00290	Pierce
Goodwill Lakewood Store	Tacoma Goodwill	EPR00290	Pierce
Goodwill Lucky Foods Lakewood Donation Station	Tacoma Goodwill	EPR00290	Pierce
Goodwill NE Tacoma Donation Station	Tacoma Goodwill	EPR00290	Pierce
Goodwill Puyallup River Road Store	Tacoma Goodwill	EPR00290	Pierce
Goodwill Roses IGA Donation Station	Tacoma Goodwill	EPR00290	Pierce
Goodwill South Hill Store	Tacoma Goodwill	EPR00290	Pierce
Goodwill Spanaway Store	Tacoma Goodwill	EPR00290	Pierce
Goodwill Tacoma Landfill Recycle Donation Station	Tacoma Goodwill	EPR00290	Pierce
Goodwill Tacoma Outlet Store	Tacoma Goodwill	EPR00290	Pierce
Goodwill Tacoma South Store	Tacoma Goodwill	EPR00290	Pierce
Goodwill University Place Refuse/Recycle Station	Tacoma Goodwill	EPR00290	Pierce
Goodwill Wauna - Key Peninsula Donation Station	Tacoma Goodwill	EPR00290	Pierce
Green PC	Green PC	EPR00520	Pierce

<i>Collector Site Name</i>	<i>Operating Organization</i>	<i>EPR Number</i>	<i>County</i>
Joint Base Lewis-McChord Recycle Center	LeMay Inc	EPR00529	Pierce
McChord Recycling Center	LeMay Inc	EPR00529	Pierce
Recycling Resources	Recycling Resources	EPR00877	Pierce
Salvation Army Bonney Lake Donation Site	The Salvation Army Seattle ARC	EPR00543	Pierce
Salvation Army Puyallup Donation Site	The Salvation Army Seattle ARC	EPR00543	Pierce
St. Vincent de Paul S. 56th St.	St Vincent de Paul Tacoma	EPR00561	Pierce
St. Vincent de Paul South Hill	St Vincent de Paul Tacoma	EPR00561	Pierce
Value Village Puyallup	Savers Recycling, Inc.	EPR00484	Pierce
Value Village University Place	Savers Recycling, Inc.	EPR00484	Pierce
VIDEO ONLY - Tacoma	Video Only, Inc.	EPR00855	Pierce
Community Treasures	Community Treasures	EPR00489	San Juan
Lopez Solid Waste Disposal District	Lopez Solid Waste Disposal District	EPR01022	San Juan
Orcas Recycling Services	Orcas Recycling Services	EPR00512	San Juan
Anacortes Aktion Club	Anacortes Aktion Club	EPR00523	Skagit
Appliance Connection	Appliance Recycling Outlet	EPR00486	Skagit
E-Waste, LLC - Mount Vernon	E-Waste LLC	EPR00445	Skagit
Goodwill Anacortes Donation Center	Seattle Goodwill	EPR00310	Skagit
Goodwill Mount Vernon Store	Seattle Goodwill	EPR00310	Skagit
Sedro-Woolley City Recycling Facility	City of Sedro-Woolley	EPR00324	Skagit
Value Village Mt Vernon	Savers Recycling, Inc.	EPR00484	Skagit
Mt. Pleasant Transfer Facility	Skamania County Solid Waste Division	EPR00358	Skamania
Stevenson Transfer Facility	Skamania County Solid Waste Division	EPR00358	Skamania
Underwood Transfer Facility	Skamania County Solid Waste Division	EPR00358	Skamania
Ace Metal Company and Mukilteo Recycling Center	Ace Metal Company	EPR00557	Snohomish
Appliance Recycling Outlet	Appliance Recycling Outlet	EPR00486	Snohomish
Eman computer Care	Eman Computer Care and Data Recovery	EPR00052	Snohomish
Eman Computer Care	Eman Computer Care and Data Recovery	EPR00052	Snohomish
E-Waste, LLC - Everett	E-Waste LLC	EPR00445	Snohomish
E-Waste, LLC - Lynnwood	E-Waste LLC	EPR00445	Snohomish
Goodwill Edmonds Store	Seattle Goodwill	EPR00310	Snohomish
Goodwill Everett Store	Seattle Goodwill	EPR00310	Snohomish
Goodwill Lynnwood Store	Seattle Goodwill	EPR00310	Snohomish
Goodwill Martha Lake Donation Center	Seattle Goodwill	EPR00310	Snohomish
Goodwill Marysville Store	Seattle Goodwill	EPR00310	Snohomish
Goodwill Monroe Store	Seattle Goodwill	EPR00310	Snohomish
Goodwill Snohomish Donation Center	Seattle Goodwill	EPR00310	Snohomish
Goodwill South Everett Store	Seattle Goodwill	EPR00310	Snohomish
Greener Grounds Alternative Solutions	Greener Grounds Alternative Solutions	EPR01143	Snohomish
JACO Environmental Inc.	JACO Environmental, Inc.	EPR01151	Snohomish
Kiwanis Recycle	Stanwood Camano Kiwanis	EPR01059	Snohomish
Northwest Center Mukilteo	Northwest Center	EPR00411	Snohomish
NW Center Truck at Lake Stevens Albertsons	Northwest Center	EPR00411	Snohomish
NW Center Truck at Thrasher's Corner Shopping Cnt.	Northwest Center	EPR00411	Snohomish
Pacific Power Batteries Lynnwood	Pacific Power Batteries	EPR00967	Snohomish
Salvation Army Lynnwood Donation Center	The Salvation Army Seattle ARC	EPR00543	Snohomish

<i>Collector Site Name</i>	<i>Operating Organization</i>	<i>EPR Number</i>	<i>County</i>
Salvation Army Marysville Donation Site	The Salvation Army Seattle ARC	EPR00543	Snohomish
Salvation Army Mill Creek Donation Site	The Salvation Army Seattle ARC	EPR00543	Snohomish
St Vincent dePaul Lynnwood	St Vincent de Paul Northsound	EPR00560	Snohomish
St. Vincent dePaul Everett	St Vincent de Paul Northsound	EPR00560	Snohomish
St. Vincent dePaul Monroe	St Vincent de Paul Northsound	EPR00560	Snohomish
Truck On Call	Truck On Call	EPR00528	Snohomish
Value Village Edmonds	Savers Recycling, Inc.	EPR00484	Snohomish
Value Village Everett	Savers Recycling, Inc.	EPR00484	Snohomish
Value Village Lynwood	Savers Recycling, Inc.	EPR00484	Snohomish
Value Village Marysville	Savers Recycling, Inc.	EPR00484	Snohomish
VIDEO ONLY - Lynnwood	Video Only, Inc.	EPR00855	Snohomish
APB AUTO PARTS	Auto Parts Barn, Inc.	EPR00904	Spokane
Appliance Recycling Outlet	Appliance Recycling Outlet	EPR00486	Spokane
DeVries Business Services	DeVries Business Services	EPR00914	Spokane
Goodwill Airway Heights Donor Service Center	Inland Northwest Goodwill	EPR00334	Spokane
Goodwill Cheney Donor Service Center	Inland Northwest Goodwill	EPR00334	Spokane
Goodwill Dishman-Appleway Donor Service Center	Inland Northwest Goodwill	EPR00334	Spokane
Goodwill Downtown Spokane Plant/Dock Donation Cent	Inland Northwest Goodwill	EPR00334	Spokane
Goodwill Francis Donor Service Center	Inland Northwest Goodwill	EPR00334	Spokane
Goodwill Mt. Spokane Donor Service Center	Inland Northwest Goodwill	EPR00334	Spokane
Goodwill North Division Y Donor Service Center	Inland Northwest Goodwill	EPR00334	Spokane
Goodwill North Nevada Store	Inland Northwest Goodwill	EPR00334	Spokane
Goodwill NW Spokane Donor Service Center	Inland Northwest Goodwill	EPR00334	Spokane
Goodwill Palouse Hwy Donor Service Center	Inland Northwest Goodwill	EPR00334	Spokane
Goodwill South Hill Store Donor Service Center	Inland Northwest Goodwill	EPR00334	Spokane
Goodwill South Pines Donor Service Center	Inland Northwest Goodwill	EPR00334	Spokane
Goodwill Spokane Valley Store	Inland Northwest Goodwill	EPR00334	Spokane
Goodwill Spokane Villy Argonne Donor Service Center	Inland Northwest Goodwill	EPR00334	Spokane
Goodwill Spokane Warehouse	Inland Northwest Goodwill	EPR00334	Spokane
Goodwill Veradale Donor Service Center	Inland Northwest Goodwill	EPR00334	Spokane
Goodwill Wandermere Donor Service Center	Inland Northwest Goodwill	EPR00334	Spokane
Inland ReTech	Electronic Recycling, LLC dba Inland ReT	EPR00335	Spokane
Recycle Techs	Recycle Techs	EPR00478	Spokane
Recycle Techs North	Recycle Techs	EPR00478	Spokane
Salvation Army Spokane	The Salvation Army Seattle DHQ	EPR00470	Spokane
Salvation Army Spokane Valley	The Salvation Army Seattle DHQ	EPR00470	Spokane
Union Gospel Mission Thrift Store	Union Gospel Mission Spokane	EPR01163	Spokane
Value Village Spokane E Sprague	Savers Recycling, Inc.	EPR00484	Spokane
Value Village Spokane W Boone	Savers Recycling, Inc.	EPR00484	Spokane
VIDEO ONLY - Spokane	Video Only, Inc.	EPR00855	Spokane
Goodwill Colville Store	Inland Northwest Goodwill	EPR00334	Stevens
Goodwill Hawks Prairie Landfill/Recycle Station	Tacoma Goodwill	EPR00290	Thurston
Goodwill Lacey Store	Tacoma Goodwill	EPR00290	Thurston
Goodwill Olympia Outlet	Tacoma Goodwill	EPR00290	Thurston
Goodwill Olympia Store	Tacoma Goodwill	EPR00290	Thurston

<i>Collector Site Name</i>	<i>Operating Organization</i>	<i>EPR Number</i>	<i>County</i>
Goodwill South Lacey Store	Tacoma Goodwill	EPR00290	Thurston
Goodwill Walmart Tumwater ADS	Tacoma Goodwill	EPR00290	Thurston
Goodwill Yelm Store	Tacoma Goodwill	EPR00290	Thurston
MARS LLC	Mars, LLC	EPR01013	Thurston
State Surplus Tumwater Site	Department of Enterprise Services / State Surplus	EPR00480	Thurston
Value Village Lacey	Savers Recycling, Inc.	EPR00484	Thurston
Stanley's Sanitary Service	Stanley's Sanitary Service LLC	EPR00493	Wahkiakum
CEP Recycle Walla Walla	HHH	EPR00471	Walla Walla
Goodwill College Place Walmart Donation Center	Goodwill Industries of the Columbia	EPR00871	Walla Walla
Goodwill Walla Walla Store	Goodwill Industries of the Columbia	EPR00871	Walla Walla
Walla Walla Recycling	Walla Walla Recycling Inc	EPR00496	Walla Walla
Goodwill Bellingham Store	Seattle Goodwill	EPR00310	Whatcom
Recycling & Disposal Services, Inc.	Recycling & Disposal Services, Inc.	EPR00510	Whatcom
Safe And Easy Recycling - Bellingham	Safe And Easy Recycling	EPR00397	Whatcom
Safe And Easy Recycling -Lynden/North County	Safe And Easy Recycling	EPR00397	Whatcom
Salvation Army Bellingham	The Salvation Army Seattle DHQ	EPR00470	Whatcom
Value Village Bellingham	Savers Recycling, Inc.	EPR00484	Whatcom
Goodwill Pullman Donor Service Center	Inland Northwest Goodwill	EPR00334	Whitman
Pullman Disposal Shop	Pullman Disposal Service, Inc.	EPR00299	Whitman
Washington State University	Washington State University	EPR01058	Whitman
Goodwill Burger King Donation Station	Tacoma Goodwill	EPR00290	Yakima
Goodwill Selah Store	Tacoma Goodwill	EPR00290	Yakima
Goodwill Sunnyside Store	Goodwill Industries of the Columbia	EPR00871	Yakima
Goodwill Union Gap Store	Tacoma Goodwill	EPR00290	Yakima
Goodwill Yakima K Mart Donation Station	Tacoma Goodwill	EPR00290	Yakima
Goodwill Yakima Store	Tacoma Goodwill	EPR00290	Yakima
Goodwill Yakima Walmart Donation Station	Tacoma Goodwill	EPR00290	Yakima
Salvation Army Union Gap	The Salvation Army Seattle DHQ	EPR00470	Yakima
Salvation Army Yakima	The Salvation Army Seattle DHQ	EPR00470	Yakima
Sunnyside Christian Thrift Shop	Sunnyside Christian Thrift Shop	EPR00566	Yakima
Union Gospel Mission Yakima	Union Gospel Mission Yakima	EPR00568	Yakima
Value Village Union Gap	Savers Recycling, Inc.	EPR00484	Yakima
Yakima Waste Systems - Granger	Yakima Waste Systems, Inc.	EPR00463	Yakima

## Processors participating in WMMFA Standard Plan - Description of processes and methods Reference to compliance audits

The information listed below represents a summary of processor locations and processing methods of each of the approved processors participating in the Standard Plan Processes listed include any and all processors utilized for any quantity of materials in 2015 with data based on most recent audits  
For the most current compliance audit report please refer to the WMMFA Standard Plan Processor section at this link:

<http://www.ecy.wa.gov/programs/swfa/eproductrecycle/plans.html>

Ace Metal Company, 11110 Mukilteo Speedway #202, Mukilteo, WA 98275		Jay Lee	(425)493-6802
Material Of Concern	Recycling Process	Fate of Recycling Process	End of life processing-Destination Country
<b>CRT Glass</b>	Removed from CEP by hand dismantling separated panel and funnel, all metal removed	Glass to glass, all materials are reused in new glass product	Mexico and India
<b>Circuit Boards</b>	Removed from CEP by hand dismantling	Precious metals recovery	Belgium
<b>Batteries</b>	Hand removed from CEP and sorted by type	Metal Recovery	USA
<b>Mercury Devices</b>	Hand removed from CEP managed as universal waste	Retort Mercury Recovery	USA
Non-Materials of Concern	Recycling Process	Fate of Recycling Process	Destination
<b>Steel</b>	Hand removed from CEP and sorted	Metal Recovery	USA
<b>Plastics</b>	Hand removed from CEP and sorted	Plastic Recovery	USA
<b>Insulated Wire</b>	Hand removed from CEP and sorted	Metal Recovery	USA
<b>Aluminum</b>	Hand removed from CEP and sorted	Metal Recovery	USA
<b>Wood</b>	Hand removed from CEP and sorted	Wood Recovery	USA

EWC Group, 410 Andover Park E., Tukwila, WA 98188		James Piek	(206)767-9950
Material Of Concern	Recycling Process	Fate of Recycling Process	End of life processing-Destination Country



CRT Glass	Manually removed from CEP; separate panels, metals, and all other residuals	Glass to glass; all materials reused in new glass products	U.S./Mexico /India
Circuit Boards	Manually removed from CEP	Primary smelter for precious metal recovery	Korea / Japan / Belgium
Batteries	Manually removed from CEP and sorted by type	Metal Recovery	U.S.
Mercury Devices	Manually removed from CEP and managed as Universal Waste	Mercury recovery	U.S. / Canada
<b>Non-Materials of Concern</b>	<b>Recycling Process</b>	<b>Fate of Recycling Process</b>	<b>Destination</b>
Steel	Manually removed from CEP	Metal recovery	U.S.
Plastics	Manually removed from CEP	Plastic Recovery	China / Canada / U.S.
Insulated Wire	Manually removed from CEP	Metal recovery	China / Korea / U.S.

<b>IMS Electronic Recycling, 2401 Saint Francis Lane, Vancouver, WA 98660</b>		<b>Bill Peterson</b>	<b>(360)750-8883</b>
<b>Material Of Concern</b>	<b>Recycling Process</b>	<b>Fate of Recycling Process</b>	<b>End of life processing-Destination Country</b>
CRT Glass	Removed from CEP with vacuum release or removed from CEP and separated panel and funnel, all metal removed	Glass to Glass or Glass to commodity recycling	USA
Circuit Boards	Removed from CEP by hand dismantling or automated shred/sort	Primary smelter recovering metals	USA / Japan
Batteries	Hand removed from CEP sorted by type	Metals Recovery	USA / Canada
Mercury devices	Hand removed from CEP packed in lined sealed containers	Mercury recovery	USA
<b>Non-Materials of Concern</b>	<b>Recycling Process</b>	<b>Fate of Recycling Process</b>	<b>Destination</b>
Steel	Removed from CEP by hand dismantling or Automated shred/sort	Metal Recovery	USA
Plastics	Removed from CEP by hand dismantling or automated shred/sort	Plastic Recovery	U.S. Brokers
Insulated Wire	Removed from CEP by hand dismantling or automated shred/sort	Metal Recovery	USA
Aluminum	Removed from CEP by hand dismantling or automated shred/sort	Metal Recovery	USA

<b>E-WASTE LLC, 12424 Beverly Park Rd Suite A-4, Lynnwood, WA 98036</b>		<b>Sam or Paul Kim</b>	<b>(425)239-4118</b>
<b>Material Of Concern</b>	<b>Recycling Process</b>	<b>Fate of Recycling Process</b>	<b>End of life processing-Destination Country</b>
CRT Glass	Removed from monitors and TVs	Glass to glass recycling. All materials are used in new CRTs.	USA and Mexico
Circuit Boards	Removed from CEP by hand-dismantling	Precious metal recovery	USA and Europe

Batteries	Hand-removed from CEP, sorted by type.	Metal Recovery	USA
Mercury Containing Lamps	Hand-removed from CEP by hand dismantling, managed as universal waste.	Mercury Recovery	USA
<b>Non-Materials of Concern</b>	<b>Recycling Process</b>	<b>Fate of Recycling Process</b>	<b>Destination</b>
Steel	Removed from CEP by hand-dismantling.	Metal Recovery	USA
Plastics	Removed from CEP by hand-dismantling.	Plastics Recovery	USA
			USA
			USA
Insulated Wire	Removed from CEP by hand-dismantling.	Metal Recovery	USA
Aluminum	Removed from CEP by hand-dismantling.	Metal Recovery	USA
Scrap Wood	Removed from CEP by hand-dismantling.	Solid Waste Landfill (via Transfer Station)	USA

ECS Refining, 705 Reed Street, Santa Clara, CA 95050			
		Ken Taggart or Curt Spivey	(408)200-7021
Material Of Concern	Recycling Process	Fate of Recycling Process	End of life processing-Destination Country
CPU's and selected Electronic Devices	Most electronic devices are dismantled, however, some are evaluated for reuse and/or refurbishment	Downstream recyclers of post dismantled and post shredded commodities are discussed below.	See Below USA
CRTs	Most CRT's are dismantled and the glass is crushed on site	Downstream recyclers are discussed in Lead Containing Glass, below.	See Below USA
CRT Glass	CRTs that are not refurbished for resale are dismantled and the glass is crushed on site.	ECS prefers to ship lead- containing glass to a CRT Tube manufacturer, which uses the glass to make new CRT Tubes (glass to glass recycling).  Lead-containing CRT Glass not shipped for glass-to-glass recycling is shipped to a Lead (Pb) Smelter which recovers the lead as a commodity and sells it on the world market.	Mexico, USA, Canada, India

Circuit Boards (Whole)	Circuit Boards are shredded to a minus 2" particles size. The iron & aluminum are removed by magnetic & eddy current separation.	Shredded circuit boards are shipped to a primary copper smelter which recovers copper, gold, silver and palladium as well as other minor elements. The metals are sold as commodities on the world market.	Canada
Batteries	Batteries are manually removed from electronic devices. The batteries are sorted by type (Alkaline, Lithium, etc.).	<p>Lead/Acid batteries are shipped to a battery manufacturer which recycles the batteries by melting the lead and using it in the manufacture of new batteries.</p> <p>Silver oxide batteries are smelted at ECS Refining Santa Clara and their silver content is captured by ECS. Post smelted materials are sent for further precious metals processing.</p> <p>All other batteries are shipped to a high temperature alloy producer which melts the batteries by their specific type to recover the respective metals.</p>	<p>USA</p> <p>USA</p> <p>USA</p>
Mercury Devices	Mercury devices are received and stored for off-site processing (fluorescent lighting tubes, for example) or mercury devices may be manually removed from other electronic devices.	All mercury-containing devices are shipped to an EPA approved mercury recycler which removes the mercury from the device and produces mercury as a commodity for sale.	USA
Polychlorinated Biphenyls PCBs	PCBs are not "accepted" for storage or processing at ECS. However, ECS may transfer PCB's to an approved TSDF	ECS provides transportation services to an authorized TSDF or recycler.	USA
<b>Non-Materials of Concern</b>	<b>Recycling Process</b>	<b>Fate of Recycling Process</b>	<b>Destination</b>
Steel	Electronic scrap is shredded to a minus 2" particle size and then the steel is magnetically removed.	The steel is shipped to a steel mill where the steel is melted to produce new steel products (steel rod, plate or bars)	Brokers

Plastics	Plastics are manually removed from the electronic scrap and baled by type of plastic (ABS, HIPS, PC etc.)	The plastic is sold to a plastics processor which grinds the plastic for sale as a raw material feed to manufacturers of plastic products.	Brokers
Insulated Wire	Wire is manually and mechanically removed from electronic scrap.	The wire is shipped to a wire chopping company which mechanically chops the wire and then uses air and/or water to separate the copper from the plastic. The copper & plastic are sold as commodities.	Brokers
Aluminum	Electronic scrap is shredded to a minus 2" particle size and then the aluminum is removed by eddy current separation.	The aluminum is shipped to aluminum alloyers which melt the aluminum and produce aluminum alloys for sale.	Brokers
CRT Yokes	Yokes are compacted and baled on site.	The yokes are shipped to copper alloyers, which melt the yokes and produce copper alloys for sale.	Brokers
Copper	Copper scrap is shredded to a minus 2" particle size and then copper is removed by magnetic separation	The copper is shipped to copper alloyers, which melt the copper and produce copper alloys for sale.	Brokers

ERI Inc., 2302 West Valley Highway, Ste 300., Auburn, WA 98001			
		Aaron Blum	(206)577-1490
Material Of Concern	Recycling Process	Fate of Recycling Process	End of life processing-Destination Country
CRT Glass	It is removed from CEP and screen and metal gun removed.	Glass to Glass recycling to be reused in new CRT products.	For processing: Mexicali, BC, Mexico For final furnace: Gujarat, India
Circuit Boards	Boards are removed from CEP by manual separation. They are then sent to our Fresno facility for shredding.	Precious Metals Recovery	USA, Belgium or South Korea
Batteries	Removed manually and sorted by type	Metal Recovery	All Types: USA
Mercury devices	Removed manually and managed as universal waste.	Mercury Recovery	USA
Non-Materials of Concern	Recycling Process	Fate of Recycling Process	Destination

Steel	Removed Manually and sent to Fresno to be shredded	Metal Recovery	USA
Plastics	Removed manually from CEP and bailed	Plastics Recovery	ASIA
Insulated Wire	Removed manually from CEP and sent to Fresno for Shredding	Metal Recovery	Belgium or Korea
Aluminum	Removed manually from CEP and sorted.	Metal Recovery	USA

<b>TOTAL RECLAIM, 2200 6th Ave S., Seattle, WA 98134</b>	<b>Craig Lorch</b>	<b>(206)343-7443</b>
--	--------------------	----------------------

<b>Material Of Concern</b>	<b>Recycling Process</b>	<b>Fate of Recycling Process</b>	<b>End of life processing-Destination Country</b>
CRT Leaded Glass	Removed from monitors; screen and metal gun removed	Glass to glass, all materials are reused in new CRT	Mexico (glass washing) India (CRT manufacture)
CRT Leaded Glass	Removed from monitors; screen and metal gun removed	Glass to lead recovery	Canada
CRT Leaded Glass	Removed from monitors; screen and metal gun removed	Glass to ceramic tile	Spain
Circuit Boards	Removed from electronic equipment by hand dismantling or automated shred/sort process	Precious metals recovery	South Korea, Japan or Sweden
Batteries	Hand removed from electronic equipment, hand sorted by type.	Metal recovery	USA
Mercury devices	Hand removed from CEP, managed as universal waste	Mercury recovery	USA
<b>Non-Materials of Concern</b>	<b>Recycling Process</b>	<b>Fate of Recycling Process</b>	<b>Destination</b>
Steel	Removed from electronic equipment by hand dismantling or automated shred/sort process	Metal recovery	USA
Plastics	Removed from electronic equipment by hand dismantling or automated shred/sort process	Plastics recovery	USA or China
Insulated Wire	Removed from electronic equipment by hand dismantling or automated shred/sort process	Metal recovery	USA
Aluminum	Removed from electronic equipment by hand dismantling or automated shred/sort process	Metal recovery	USA

## WMMFA Educational and Promotional efforts cumulative and 2015 - summary

In 2013, collaborating with the outreach workgroup, the WMMFA implemented a 5th year anniversary outreach strategy designed to engage mainstream media in Eastern and Western Washington. This plan dedicated resources to reaching Spanish speaking communities through pre-packaged media/content and community outreach. The plan targeted mainly rural communities based upon their lower CEP collections per capita in comparison to counties with above average pounds per capita contributions. Documentation and samples of media production / results is provided below along with summary documentation outlining specific outreach strategies. A table with estimated impact of this outreach is provided at the bottom of this section.

In 2014 the WMMFA continued outreach efforts to ensure that information about where, how, and why to recycle CEP's was available to all state residents.

Methods and strategies for the months of April through August 2014:

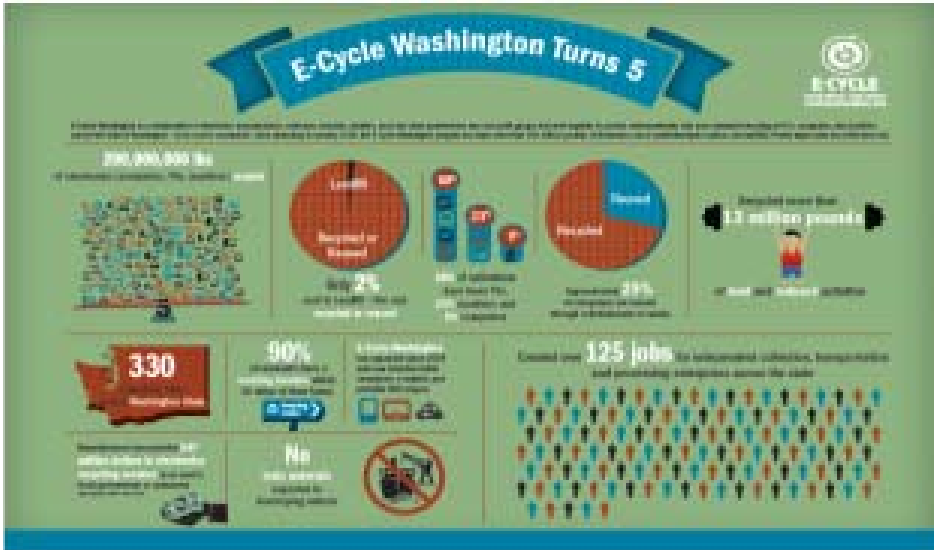
- Utilization of news talk radio KIRO-FM for reaching those most likely to regularly update their technologies
- Internet audio streaming of 15 and 30 second spots (same spots as used on radio) through MyNorthwest.com
- Display advertisements on MyNorthwest.com with links directly to E-Cycle Washington website
- KIRO Radio spots 10 per week morning drive time, 10 per week prime time, 10 per week random time with matching audio stream 30 times per week
- 100,000 impressions per week at MyNorthwest.com

For 2015 outreach efforts continued in a similar manner as 2014 to ensure that information about where, how, and why to recycle CEP's was available to all state residents. Specifically:

- Utilization of news talk radio KIRO-FM for reaching those most likely to regularly update their technologies
- Internet audio streaming of 15 and 30 second spots (same spots as used on radio) through MyNorthwest.com, Monday - Friday 2x per day March, April, May, June, September
- Display advertisements on MyNorthwest.com with links directly to E-Cycle Washington website
- KIRO Radio spots 10 per week morning drive time, 10 per week prime time, 10 per week random time with matching audio stream 30 times per week March, April, May, June, September 2015
- 60,000 impressions per week at MyNorthwest.com - Monday through Sunday - two weeks per month
- The WMMFA participated in cooperative print advertising with Pend Oreille County Public Works throughout 2015
- Approximately 260 laminated (indoor and outdoor) Posters were distributed to our collection Network for "branding" of physical collection sites
- Approximately 4000 brochures (brochure copy below) were distributed to collectors and any interested parties throughout 2015

### THE MATERIALS PRESENTED BELOW OFFER A HISTORICAL PERSPECTIVE ON E-CYCLE WASHINGTON OUTREACH EFFORTS OF THE WMMFA

The WMMFA also provides posters, banners, and brochures to collectors and any interested parties requesting them. In summary the WMMFA has created and sponsored placement of TV spots, web banners, click to call, video display, and mobile advertising opportunities statewide since inception.



Brief description of some of the E-Cycle coverage

#### E-Cycle Coverage (2011-2013)

KNDU Yakima ran a TV story featuring E-Cycle and a local collector on 10/23

- KPQ radio in Wenatchee ran a story featuring E-Cycle and Goodwill on 10/23
- KOMO radio in Seattle ran a story on E-Cycle on 10/24 and recorded a follow-up interview on 11/8 – I will get this clip when available
- KOMO online ran a story on 10/24
- The Columbian published a news brief on October 25
- KIT radio in Yakima ran a story on E-Cycle on 10/24 based on KNDU's coverage
- KING ran a story on 11/12

#### Hispanic Coverage

- A Spanish story from our event ran on KUNS at 6:00 and 11:00 PM newscasts on 10/23
- Hispanic Business ran a story 10/26
- Tu Decides ran a story on 11/1
- A total of 115 Spanish spots ran on radio stations KDYK, KMMG, KZML, KZTA and KZTB

#### WEB and mobile network outreach:

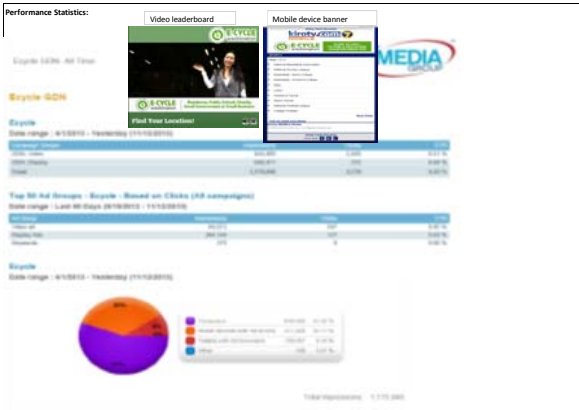
The WMMFA financed and produced a 15 second and a 30 second video advertising spot via agreement with KIRO TV in early 2012.

The WMMFA had 100,000 monthly mobile banner ad impressions rotating on Network Mobile with click to call feature and geo-targeted to: Skagit, Chelan, Yakima, Spokane, Whitman, Pend Oreille, and Benton counties March through November 2013

30,000 monthly video pre-roll impressions running on Google Display Network geo-targeted to Skagit, Chelan, Yakima, Spokane, Whitman, Pend Oreille, and Benton counties March through November 2013

100,000 monthly leaderboard and display ad impressions on kirotv.com across multiple counties

20,000 monthly in-video display ad impressions (:15 second E-Cycle ads) ran ROS (run of site) on KIRO-TV.com



In February through April of 2013 the WMMFA had multiple billboards placed along selected highway thoroughfares of medium sized counties within the state. Camera shots of the billboards are provided below. Placement was in the Tri-Cities (Benton, Franklin, Walla Walla counties) area and Yakima County for approximately 2 months per board.



The WMMFA owns the 15 and 30 second video productions and has made them freely available to our collectors, transporters, processors and interested parties for posting and for advertising of the E-cycle plan along with their independent collection or processing web sites.

The WMMFA has always offered to participate with collectors that request cooperative advertising funds to produce local materials such as flyers, direct mail inserts, newspaper or event programs and other local published media. Participation amount varies based on total cost, pre-planned budget, and perceived effectiveness of the outreach.

The WMMFA maintains a website and toll free phone number that gives information about the WMMFA and the E-cycle WA plan in sufficient detail to all covered entities, potential service providers and other stakeholders. It is estimated that the WMMFA directed over 1,500 covered entities (mainly households, small governments and school districts) via phone contact in 2013.

Promotional materials are available by direct re-print from exportable files at our web site and as provided to Ecology for their website.

The WMMFA produces hundreds of laminated (outdoor) posters, banners (2013), and informative brochures annually available free of charge to collectors and interested parties for the asking. Samples of the posters, banners, and brochures reproduced below.





**Suggested impact of cumulative E-Cycle outreach and promotion to date:**

(target counties as referenced = counties traditionally at or below the state "average" per capita collection level)

2009	2010	2011	2012	2013 to date	
<b>Increase public school awareness</b>					
<b>26,000 brochures and 500+ retail display posters issued</b>					
<b>Co-op print advertising bilingual Spanish and co-op as requested by collectors</b>					
<b>Multi-county press releases NPR(radio) WSJ (print) interviews released</b>					
<b>2,400 30 second radio announcements free electronics recycling</b>					
<b>Major retailers, including all Wal-marts identify E-cycle on sales receipts and apply E-cycle branding to new product packaging</b>					
<b>4000+ additional radio announcements - selected counties</b>					
<b>Major Billboard placement - Tacoma area</b>					
<b>100+ TV ads - Seattle area</b>					
<b>100+ TV ad placements Eastern WA area (Spokane area)</b>					
<b>Mobile device streaming and banner ads</b>					
<b>Major multiple billboard placements Tri Cities and Yakima</b>					
<b>Mobile device streaming, banner ads, video pre-roll Google display network</b>					
<b>County</b>	<b>Population (2010 est.)</b>	<b>lbs. / cap 2009</b>	<b>lbs. / cap 2010</b>	<b>lbs. / cap 2011</b>	<b>lbs. / cap 2012</b>
Asotin	21,700	4.87	6.38	5.06	4.22
Benton	172,900	3.07	3.39	3.81	4.25
Chelan	73,300	3.78	3.23	2.97	3.76
Clallam	70,100	5.96	5.50	6.68	5.70
Cowlitz	100,000	4.60	5.05	6.27	6.43
Douglas	38,500	0.79	1.62	1.85	2.00
Ferry	7,850	2.42	1.16	2.69	1.54
Grant	87,700	2.56	2.74	2.82	2.22
Grays Harbor	71,600	3.55	5.19	5.28	5.61
King	1,933,400	7.71	6.99	8.15	8.41
Kitsap	248,300	7.00	6.01	5.91	5.29
Kittitas	40,500	9.28	12.36	14.97	15.06
Lewis	75,600	3.81	3.76	4.65	4.47
Mason	57,100	4.83	3.15	2.05	2.13
Skagit	119,300	4.20	4.00	4.33	4.76
Snohomish	711,100	7.73	9.01	7.32	7.13
Spokane	470,300	3.62	4.12	4.71	5.10
Stevens	44,300	1.58	1.99	1.82	2.41
Thurston	252,400	5.97	6.31	7.24	7.66
Walla Walla	59,600	4.45	5.60	5.19	6.12
Whatcom	195,500	5.68	5.99	6.87	6.84
Whitman	43,600	4.11	4.63	4.91	5.42
Yakima	239,100	3.37	3.60	4.06	4.23
<b>Target WA Counties lbs. cap avg. --&gt;</b>	5,133,750	<b>6.14</b>	<b>6.15</b>	<b>6.41</b>	<b>6.72</b>
<b>All WA counties lbs. per cap avg. --&gt;</b>	6,733,250	<b>5.73</b>	<b>5.86</b>	<b>6.27</b>	<b>6.46</b>
<b>Target counties percentage increase over all state</b>		<b>7.3%</b>	<b>5.0%</b>	<b>2.2%</b>	<b>4.1%</b>

(through July 2013)



**Preliminary 2014 Return Shares for Electronics Manufacturers  
Washington State Electronic Products Recycling Program**

**SAMPLING OF PRODUCTS TURNED IN FOR RECYCLING FOR DETERMINATION OF RETURN SHARE PERCENTAGES BY BRAND NAME WAS DISCONTINUED IN 2015. 2014 DATA LISTED HERE WAS USED FOR DETERMINATION OF THE RETURN SHARES OF PARTICIPATING MANUFACTURERS IN 2015. THE SHARE OF PLAN EXPENSES BEGINNING WITH 2016 IS BASED ON 100% MARKET SHARE**

The E-Cycle Washington program conducted 41 sampling events in 2014 gathering data on 15,675 TVs, monitors and computers. That data was used to determine return share by manufacturer, summarized below.

<u>Manufacturer Name</u>	<u>Weight (lbs)</u>	<u>Identified Brands Return Share (%)</u>	<u>Proportional Orphan* Share (%)</u>	<u>Total Return Share (%)</u>
Sony Electronics, Inc.	76730	11.90	0.79	12.69
Panasonic Corporation of North America	55056	8.54	0.57	9.11
Dell Computer Corp.	53625	8.32	0.55	8.87
Philips Electronics	48822	7.57	0.51	8.08
Toshiba America Information Systems, Inc.	44827	6.95	0.46	7.42
Thomson Inc. USA	41113	6.38	0.43	6.80
Hewlett Packard	33348	5.17	0.34	5.52
JVCKENWOOD USA Corp.	30027	4.66	0.31	4.97
Sharp Electronics Corporation	27645	4.29	0.29	4.57
LG Electronics USA, Inc.	21507	3.34	0.22	3.56
Acer America Corp.	19615	3.04	0.20	3.24
Samsung Electronics Co.	17129	2.66	0.18	2.83
Osram Sylvania	16304	2.53	0.17	2.70
Mitsubishi Electric US, Inc.	13681	2.12	0.14	2.26
Apple	11474	1.78	0.12	1.90
Hitachi America, LTD. Digital Media Division	9608	1.49	0.10	1.59
ViewSonic Corp World HQ	7873	1.22	0.08	1.30
Emerson Radio Corp.	7442	1.15	0.08	1.23
General Electric Co.	6590	1.02	0.07	1.09
SSNA, Inc.	5175	0.80	0.05	0.86
TMAX Digital, Inc.	4778	0.74	0.05	0.79
NEC Display Solutions	4444	0.69	0.05	0.74
Funai Corporation, Inc.	3910	0.61	0.04	0.65
Sears Roebuck & Co.	3600	0.56	0.04	0.60
Daewoo Electronics America, Inc.	3248	0.50	0.03	0.54
International Business Machines Corp.	3034	0.47	0.03	0.50
Best Buy	2867	0.44	0.03	0.47
Wal-Mart Stores, Inc.	2744	0.43	0.03	0.45
Computer Technology Link	2258	0.35	0.02	0.37
VIZIO, Inc.	2224	0.34	0.02	0.37
Envision Peripherals, Inc.	1642	0.25	0.02	0.27
Imation Corp	1611	0.25	0.02	0.27
Pioneer Electronics (USA), Inc.	1536	0.24	0.02	0.25
3MD, Inc.	1327	0.21	0.01	0.22
Asus Computer International	1240	0.19	0.01	0.21
VOXX International Corp.	1027	0.16	0.01	0.17

**Preliminary 2014 Return Shares for Electronics Manufacturers  
Washington State Electronic Products Recycling Program**

**SAMPLING OF PRODUCTS TURNED IN FOR RECYCLING FOR DETERMINATION OF RETURN SHARE PERCENTAGES BY BRAND NAME WAS DISCONTINUED IN 2015. 2014 DATA LISTED HERE WAS USED FOR DETERMINATION OF THE RETURN SHARES OF PARTICIPATING MANUFACTURERS IN 2015. THE SHARE OF PLAN EXPENSES BEGINNING WITH 2016 IS BASED ON 100% MARKET SHARE**

The E-Cycle Washington program conducted 41 sampling events in 2014 gathering data on 15,675 TVs, monitors and computers. That data was used to determine return share by manufacturer, summarized below.

<u>Manufacturer Name</u>	<u>Weight (lbs)</u>	<u>Identified Brands Return Share (%)</u>	<u>Proportional Orphan* Share (%)</u>	<u>Total Return Share (%)</u>
J.C. Penney Corporation, Inc.	895	0.14	0.01	0.15
Tongfang Global	843	0.13	0.01	0.14
PLR IP Holdings, LLC	806	0.12	0.01	0.13
Broksonic c/o Hatzlachh Supply, Inc.	704	0.11	0.01	0.12
Sceptre, Inc.	587	0.09	0.01	0.10
Lenovo	576	0.09	0.01	0.10
Target Corporation	524	0.08	0.01	0.09
MSI Computer	476	0.07	0.005	0.08
Infotech Systems, Inc.	409	0.06	0.004	0.07
Equus Computer Systems, Inc.	398	0.06	0.004	0.07
Aopen America, Inc.	369	0.06	0.004	0.06
US Micro PC, Inc.	353	0.05	0.004	0.06
Infotel Distributors, Inc.	336	0.05	0.003	0.06
PDi Communication Systems, Inc.	317	0.05	0.003	0.05
Disney Consumer Products, Inc.	294	0.05	0.003	0.05
Dish Network	281	0.04	0.003	0.05
Micro Center & IPSPG & Micro Electronics	271	0.04	0.003	0.04
Planar Systems, Inc.	263	0.04	0.003	0.04
Fujitsu General America, Inc.	254	0.04	0.003	0.04
RadioShack Corp	254	0.04	0.003	0.04
Fourstar Group	249	0.04	0.003	0.04
PC System Services, Inc.	203	0.03	0.002	0.03
Hitachi Technologies America, Inc.	199	0.03	0.002	0.03
Fujitsu America, Inc.	199	0.03	0.002	0.03
4th Dimension Computer	186	0.03	0.002	0.03
Microsoft Corporation	184	0.03	0.002	0.03
Hannstar Display Corp.	175	0.03	0.002	0.03
Craig Electronics, Inc.	154	0.02	0.002	0.03
Ncc National Computer	140	0.02	0.001	0.02
Sager Midern Computer, Inc.	134	0.02	0.001	0.02
Haier America	132	0.02	0.001	0.02
Intergraph Corporation	122	0.02	0.001	0.02
LaCie USA	117	0.02	0.001	0.02
Hyundai IT America Corp.	117	0.02	0.001	0.02
Elo Touch Solutions, Inc.	115	0.02	0.001	0.02
Epson America, Inc.	114	0.02	0.001	0.02

**Preliminary 2014 Return Shares for Electronics Manufacturers  
Washington State Electronic Products Recycling Program**

**SAMPLING OF PRODUCTS TURNED IN FOR RECYCLING FOR DETERMINATION OF RETURN SHARE PERCENTAGES BY BRAND NAME WAS DISCONTINUED IN 2015. 2014 DATA LISTED HERE WAS USED FOR DETERMINATION OF THE RETURN SHARES OF PARTICIPATING MANUFACTURERS IN 2015. THE SHARE OF PLAN EXPENSES BEGINNING WITH 2016 IS BASED ON 100% MARKET SHARE**

The E-Cycle Washington program conducted 41 sampling events in 2014 gathering data on 15,675 TVs, monitors and computers. That data was used to determine return share by manufacturer, summarized below.

<u>Manufacturer Name</u>	<u>Weight (lbs)</u>	<u>Identified Brands Return Share (%)</u>	<u>Proportional Orphan* Share (%)</u>	<u>Total Return Share (%)</u>
Sunland Technologies, LLC	112	0.02	0.001	0.02
Oracle America, Inc.	109	0.02	0.001	0.02
Motorola Mobility, Inc.	107	0.02	0.001	0.02
BELL + HOWELL	103	0.02	0.001	0.02
ACC Tech	102	0.02	0.001	0.02
Honeywell ACS Division	98	0.02	0.001	0.02
Friendly Computers / Computer Renaissance	92	0.01	0.001	0.02
Tatung Science & Technology, Inc.	89	0.01	0.001	0.01
AG Neovo Technology Corp	88	0.01	0.001	0.01
GVISION USA, Inc.	88	0.01	0.001	0.01
Newegg	87	0.01	0.001	0.01
Parsec Computer	86	0.01	0.001	0.01
Loxex Technology, Inc.	83	0.01	0.001	0.01
BenQ America Corp	83	0.01	0.001	0.01
Wyse Technology	77	0.01	0.001	0.01
LG International (America), Inc.	76	0.01	0.001	0.01
The Other Guys, Inc.	74	0.01	0.001	0.01
Sensormatic Electronics LLC	73	0.01	0.001	0.01
CyberPower	68	0.01	0.001	0.01
E & S International Enterprises, Inc.	67	0.01	0.001	0.01
Lucky Star International dba Lucky Computers	66	0.01	0.001	0.01
Hisense USA, Corp.	65	0.01	0.001	0.01
Foxconn Technology Co. LTD	59	0.01	0.001	0.01
Premio, Inc.	54	0.01	0.001	0.01
Seattle Micro	54	0.01	0.001	0.01
NATM Buying Corporation	54	0.01	0.001	0.01
Antec, Inc	53	0.01	0.001	0.01
Macy's, Inc.	52	0.01	0.001	0.01
Daewoo International America Corp	49	0.01	0.001	0.01
Up Time Technology	49	0.01	0.001	0.01
Unisys Direct	49	0.01	0.001	0.01
MICROTEK Lab, Inc.	48	0.01	0.000	0.01
Incommand, Inc.	46	0.01	0.000	0.01
I/O Magic Corporation	46	0.01	0.000	0.01
Dynamic Decisions, Inc.	45	0.01	0.000	0.01
Shuttle Computer Group	43	0.01	0.000	0.01

**Preliminary 2014 Return Shares for Electronics Manufacturers  
Washington State Electronic Products Recycling Program**

**SAMPLING OF PRODUCTS TURNED IN FOR RECYCLING FOR DETERMINATION OF RETURN SHARE PERCENTAGES BY BRAND NAME WAS DISCONTINUED IN 2015. 2014 DATA LISTED HERE WAS USED FOR DETERMINATION OF THE RETURN SHARES OF PARTICIPATING MANUFACTURERS IN 2015. THE SHARE OF PLAN EXPENSES BEGINNING WITH 2016 IS BASED ON 100% MARKET SHARE**

The E-Cycle Washington program conducted 41 sampling events in 2014 gathering data on 15,675 TVs, monitors and computers. That data was used to determine return share by manufacturer, summarized below.

<u>Manufacturer Name</u>	<u>Weight (lbs)</u>	<u>Identified Brands Return Share (%)</u>	<u>Proportional Orphan* Share (%)</u>	<u>Total Return Share (%)</u>
Techline, Inc.	43	0.01	0.000	0.01
Supersonic, Inc.	42	0.01	0.000	0.01
CWD Limited	38	0.01	0.000	0.01
Microlynx	38	0.01	0.000	0.01
Delta Products Corporation	35	0.01	0.000	0.01
Silicon Mechanics	32	0.005	0.000	0.01
ZT Group International, Inc.	32	0.005	0.000	0.01
PC Connection, Inc.	31	0.005	0.000	0.01
Mace Security International, Inc.	30	0.005	0.000	0.005
TTE Technology, Inc.	29	0.004	0.000	0.005
NCR Corporation	29	0.004	0.000	0.005
Smith Corona	29	0.004	0.000	0.005
DPI, Inc.	29	0.004	0.000	0.005
Bosch Security Systems, Inc.	28	0.004	0.000	0.005
Ikegami Tsushinki Ltd.	28	0.004	0.000	0.005
Alcatel-Lucent USA, Inc.	27	0.004	0.000	0.004
Worldwide V7 Private Label	27	0.004	0.000	0.004
Z-Tech Computers, Inc.	25	0.004	0.000	0.004
Computer Services, Inc.	24	0.004	0.000	0.004
Mitac Logistics Corporation	24	0.004	0.000	0.004
Min Maw Int'l., Inc.	23	0.004	0.000	0.004
CPI Computers	23	0.004	0.000	0.004
Localtel Communications	22	0.003	0.000	0.004
Last Stop Computers	22	0.003	0.000	0.004
VGH Computer Services	22	0.003	0.000	0.004
MGA Entertainment	21	0.003	0.000	0.003
Navco	21	0.003	0.000	0.003
Matrix Network, Inc.	21	0.003	0.000	0.003
Videology Imaging Solutions, Inc.	20	0.003	0.000	0.003
Custom Computer Sales & Svc.	20	0.003	0.000	0.003
Crosley Corp.	19	0.003	0.000	0.003
LASONiC	18	0.003	0.000	0.003
Fry's Electronics, Inc.	18	0.003	0.000	0.003
Skyworth Electronics, Inc.	16	0.002	0.000	0.003
Northern Computer Technologies	16	0.002	0.000	0.003
Pyramid Distributing	14	0.002	0.000	0.002

**Preliminary 2014 Return Shares for Electronics Manufacturers  
Washington State Electronic Products Recycling Program**

**SAMPLING OF PRODUCTS TURNED IN FOR RECYCLING FOR DETERMINATION OF RETURN SHARE PERCENTAGES BY BRAND NAME WAS DISCONTINUED IN 2015. 2014 DATA LISTED HERE WAS USED FOR DETERMINATION OF THE RETURN SHARES OF PARTICIPATING MANUFACTURERS IN 2015. THE SHARE OF PLAN EXPENSES BEGINNING WITH 2016 IS BASED ON 100% MARKET SHARE**

The E-Cycle Washington program conducted 41 sampling events in 2014 gathering data on 15,675 TVs, monitors and computers. That data was used to determine return share by manufacturer, summarized below.

<u>Manufacturer Name</u>	<u>Weight (lbs)</u>	<u>Identified Brands Return Share (%)</u>	<u>Proportional Orphan* Share (%)</u>	<u>Total Return Share (%)</u>
Re-Pc Recycled Computers	14	0.002	0.000	0.002
AT&T Corporation	13	0.002	0.000	0.002
Microsel, Inc.	13	0.002	0.000	0.002
Digital View, Inc.	12	0.002	0.000	0.002
Pelco	12	0.002	0.000	0.002
Optoma Technology Inc	8	0.001	0.000	0.001
Universal Security Instruments	8	0.001	0.000	0.001
Speco Technologies	8	0.001	0.000	0.001
Source Code Corporation	7	0.001	0.000	0.001
Radisys Corporation	5	0.001	0.000	0.001
Brother International Corporation	5	0.001	0.000	0.001
Xerox Corporation	5	0.001	0.000	0.001
VTech Electronics North America, LLC	4	0.001	0.000	0.001
Motion Computing	4	0.001	0.000	0.001
jWIN Electronics Corp.	4	0.001	0.000	0.001
Canon U.S.A., Inc.	3	0.000	0.000	0.000
Dorel Juvenile Group	3	0.000	0.000	0.000
The Mackle Company, Inc.	3	0.000	0.000	0.000
Spectra Merchandising Int'l., Inc.	2	0.000	0.000	0.000
	<b>604494</b>	<b>93.75</b>	<b>6.25</b>	<b>100</b>

\*Orphans are brands for which an owner could not be identified or brands that were manufactured by companies that have gone out of business and there are no successors in interest. The responsibility for managing orphan products is distributed among all identified manufacturers proportionally.

## Materials of Concern Export information

The preferred environmental standards that all processors contracted with the WMMFA must subscribe to require that any materials of concern (materials that present potential risk to humans or the environment) exported to a NON OECD (Organization for Economic Co-operation and Development) member country have approval from the destination country and confirmation from the US Environmental Protection Agency.

Total weight of all materials of concern, including unwanted electronic products, electronic components, and electronics scrap collected by the WMMFA that have been exported from Washington state, from processors used by the WMMFA, to countries that are not members of the Organization for Economic Co-operation and Development or the European Union = 0. This information is provided to the WMMFA by each processor and confirmed via annual audits. Destination countries for "materials of concern" and non- materials of concern (commodities) can be found in section 5.c.d. of this report



## List of CEP Manufacturers (brand names) participating in the Standard Plan 2015\*

\* Note: Not all manufacturers brands listed actually receive an invoice for sharing of WMMFA expenses. Actual invoices (plan share of expenses) were based on the "market" and "return" shares of each listed manufacturer.

1	3DFC, LLC dba NEO3DO
2	3M Touch Systems
3	3MD Inc.
4	4th Dimension Computer
5	Abacus Office Machines
6	ACC Tech
7	Acer America Corp
8	ADEK Industrial Computers
9	ADT LLC dba ADT Security Services
10	Afunta LLC
11	AMA Computer Services, LLC
12	Amazon Fulfillment Services, Inc.
13	AMDOE, LLC
14	Amelia World Corp d/b/a LINSAY
15	American Future Tech Corp dba iBuypower
16	American Pumpkins, Inc.
17	American Sunrex Corporation
18	Andteck
19	Angel Computer Systems Inc
20	Apple
21	Associated Computer Specialists
22	Asus Computer International
23	Atron Vision
24	AWA Technology Inc.
25	Axess Products Corporation
26	Azend Group Corp
27	Azpen Innovation, Inc.
28	Bang & Olufsen
29	Barnes&Noble.com LLC
30	BCC KOREA
31	Bei er sen Technology Limited
32	Beijing Newman Ideal Digital Technology Co.
33	BenQ America Corp
34	Bereson USA
35	Best Buy
36	Best Little Computer Store
37	BLU
38	Bosch Security Systems, Inc.
39	Cardio Theater
40	Caytan Enterprise (Vilros)

List of CEP Manufacturers (brand names) participating in the Standard Plan 2015\*

41	CBC (America) Corp
42	Cellco Partnership dba Verizon Wireless
43	Changhong Trading Corp. USA
44	Charisma Productions
45	China Great Wall Computer Holding LTD
46	Chromo Inc.
47	CHUWI INNOVATION AND TECHNOLOGY CO.LTD
48	Ciil Technologies, LLC
49	Click N' Kids
50	Coastline Micro Inc.
51	Complete Computer Services
52	Computer Connections
53	Computer King Technology Corp.
54	Computer Nut Hut
55	Computer Smiths Inc
56	Computer Technology Link
57	Computer Warehouse of Central Florida, Inc
58	Computer Works of Yakima Inc
59	Contel USA
60	Craig Electronics, Inc
61	Creative Computer Sales Inc
62	Crosley Corp.
63	Csemi Microelectronics Limited
64	Curtis International Ltd
65	Custom Computer Sales & Svc
66	Cutting Edge Computer Solutions
67	CWD limited
68	CyberPower
69	Cybertron International, Inc
70	Cycrest Systems Inc.
71	Dat-a-Way Computer Solutions
72	Datawind LTD
73	DeerBrook Electronics, LLC
74	Deli Stationery, Inc.
75	Dell Computer Corp
76	Diaotec
77	DigiLand Products
78	Digimaxis LLC
79	Digital Reins, Inc.
80	Digital Systems & Solutions Corporation
81	Digital View Inc
82	Disney Consumer Products, Inc.

List of CEP Manufacturers (brand names) participating in the Standard Plan 2015\*

83	Double Power Technology, Inc.
84	DoubleSight Displays
85	DPI Inc
86	DTx
87	Ecost Electronics Ltd.
88	EIZO Inc.
89	Elitegroup Computer Systems
90	Elo Touch Solutions, Inc
91	Eluktronics, Inc.
92	Eman Computer Care and Data Recovery
93	Ematic
94	Emerson Radio Corp
95	Envision Peripherals Inc
96	Equus Computer Systems Inc.
97	EverFocus Electronics Corporation
98	Evervue USA
99	EVGA Corp.
100	F5CS LTD LLC
101	Falcon Northwest
102	FAVI Entertainment
103	Foneso LLC
104	Friendly Computers / Computer Renaissance
105	Fry's Electronics, Inc.
106	Fuhu, Inc.
107	Fujitsu America, Inc.
108	Funai Corporation, Inc.
109	FY International LLC
110	GAEMS, Inc.
111	GammaTech Computer Corp.
112	Global Phoenix Computer Technologies Solutions
113	Google Inc
114	Grand Electronics, Inc.
115	Grays Harbor Computer Svc
116	G-STYLE Ltd.
117	GVISION USA, Inc.
118	Haier America
119	HH Elements, Inc
120	Hisense USA Corp
121	Hitachi America, LTD. Digital Media Division
122	HK Contrum Electronic Limited
123	HKC Digital USA Inc.
124	HP Inc

List of CEP Manufacturers (brand names) participating in the Standard Plan 2015\*

125	HTC America, Inc.
126	Huawei Device USA, Inc.
127	Hyundai IT America Corp.
128	ICI Touch Technology Inc.
129	iDeaUSA
130	Idolian Mobile, Inc.
131	Idroid
132	iGaming
133	Ikegami Tsushinki Ltd.
134	Incommand Inc
135	InFocus Corp
136	Infotech Systems Inc
137	Infotel Distributors Inc
138	Innovative DTV Solutions
139	Innovative Technology
140	Inspira Technologies LLC
141	Inspire Technology
142	Integrity Computers and Networking
143	International Business Machines Corp.
144	I-O Corporation
145	J & N Computer Service
146	Jide Technology Ltd.
147	Johnson Health Tech Co., Ltd
148	JVC KENWOOD USA Corp
149	jWIN Electronics Corp.
150	JXD ENTERTAINMENT LTD.
151	Kobian Canada Inc.
152	Kobo Inc
153	Kyoung Seong Global Korea
154	L&S Enterprise Group Corp.
155	LaCie USA
156	LALBAY
157	Last Stop Computers
158	Latte Communications, Inc
159	LeapFrog Enterprises
160	Lenoge Technology Limited
161	Lenovo
162	Lexibook America
163	LF Products, Pte. Ltd.
164	LG Electronics USA Inc
165	Light Ahead
166	Lilliput Electronics Co, Ltd

List of CEP Manufacturers (brand names) participating in the Standard Plan 2015\*

167	Lincoln Computers
168	Localtel Communications
169	Lookout Electronics
170	Lorex Technology Inc.
171	Main Business Systems
172	Majestic Global USA
173	Marshall Electronics, Inc.
174	Marvel Entertainment, LLC
175	Matricom
176	Matsunichi Digital USA, Inc.
177	Matsunichi, Inc.
178	MegaLane Lighting Group Corporation Limited
179	Meisheng
180	MI Technologies, Inc.
181	Michley Electronics Inc
182	MICILE, Inc.
183	Microsoft Corporation
184	Mimo Inc
185	MJS Technology Co., Limited
186	Modbook, Inc.
187	Modern Office Equipment
188	Monster, LLC
189	Motion Computing
190	MSI Computer
191	MTM Trading LLC
192	Music Computing
193	N&K Trading, Inc.
194	Nationite
195	Naxa Electronics, Inc.
196	NCS Technologies, Inc
197	NEC Display Solutions
198	Nickelodeon & Viacom Consumer Products
199	Nixeus Technology, Inc.
200	NVIDIA Corp
201	On Corp US
202	On Line Support Inc
203	Oracle America Inc
204	Oregon Scientific, Inc.
205	OREI
206	Osram Sylvania
207	Pacific IT Services LLC
208	Palmer & Axe
209	Panasonic Corporation of North America
210	Parsec Computer
211	PC Recycle

List of CEP Manufacturers (brand names) participating in the Standard Plan 2015\*

212	PC System Services Inc
213	PDi Communication Systems, Inc.
214	Pelco
215	Perfection PC Inc.
216	Philips Electronics
217	Pioneer Electronics (USA), Inc.
218	Pishon Inc
219	Planar Systems Inc
220	Playtime Ltd.
221	PLR IP Holdings, LLC
222	Pogo Linux, Inc.
223	PolaTab
224	Polycom Inc
225	Premio, Inc
226	Pro Ebiz LLC
227	Proexpress Distributor, LLC
228	Prostar Computer, Inc
229	Puget Sound Systems Inc.
230	Purism, Inc
231	Pyle Audio
232	Pyramid Distributing
233	QJO Inc
234	Quality Computers & Svc
235	Quality Deal Express Inc
236	Quantum Suppliers
237	QuantumFX
238	Re-Pc Recycled Computers
239	Richman Poorman Computers
240	RJ Technology, Inc
241	Rullingnet Corporation
242	Runner Shenzhen Digital Technology Co.,
243	Sager Midern Computer Inc.
244	Sakar International, Inc
245	Same Time Next Year
246	Samsung Electronics Co
247	Sceptre, Inc.
248	Schoenfeld International Inc.
249	School Zone Publishing Company, Inc.
250	Seasize Technology Co., Ltd.
251	Sensormatic Electronics LLC
252	SHENZHEN AVIS ELECTRONICS TECHNOLOGY CO.
253	Shenzhen Buyingeasi Technologies Co., Lt
254	ShenZhen Globalegrow E-Commerce Co., Ltd
255	Shenzhen Haina Tianyuan Ecommerce Co., Ltd.
256	SHENZHEN JIACHUANGBO TECHNOLOGY CO.,LTD

List of CEP Manufacturers (brand names) participating in the Standard Plan 2015\*

257	Shenzhen Luckystar Technology Co., Ltd
258	Shenzhen Turbosight Technologies Co., Ltd
259	Shenzhen Wave Multimedia Co., Ltd
260	Shuttle Computer Group
261	Silicon Mechanics
262	Silicon Valley Imaging Corp.
263	Silo Digital
264	Simbans Limited
265	SINGREEN INTERNATIONAL CORPORATION LTD
266	SkyVue
267	SMART Technologies ULC
268	Softline Computers & Svc
269	Sony Electronics Inc
270	Sotodeals, Inc.
271	Source Code Corporation
272	Spring Rose Technology Co. LTD
273	SSNA, Inc.
274	Summit Computers
275	SunBriteTV LLC
276	Sunflying International, Inc.
277	Sungale Electronics
278	Supercircuits, Inc
279	Supersonic, Inc.
280	TAIWAN VIDEO SYSTEM CO., LTD
281	Tatung Company of America Inc
282	TCT Mobile (US) Inc.
283	Tech Mob
284	TekVisions, Inc
285	Thomson Inc USA
286	Tinamy Trade LLC
287	TMAX Digital Inc.
288	Tongfang Global
289	Tonik
290	ToteVision
291	Trans Cosmos America
292	Transform Partners, LLC
293	Tri-Ed / Northern Video Distribution
294	TTE Technology Inc
295	TUVVA
296	Tyco Integrated Security
297	Unisys Direct
298	UNOWHY
299	Up Time Technology
300	Upstarusa Group
301	US Micro PC Inc



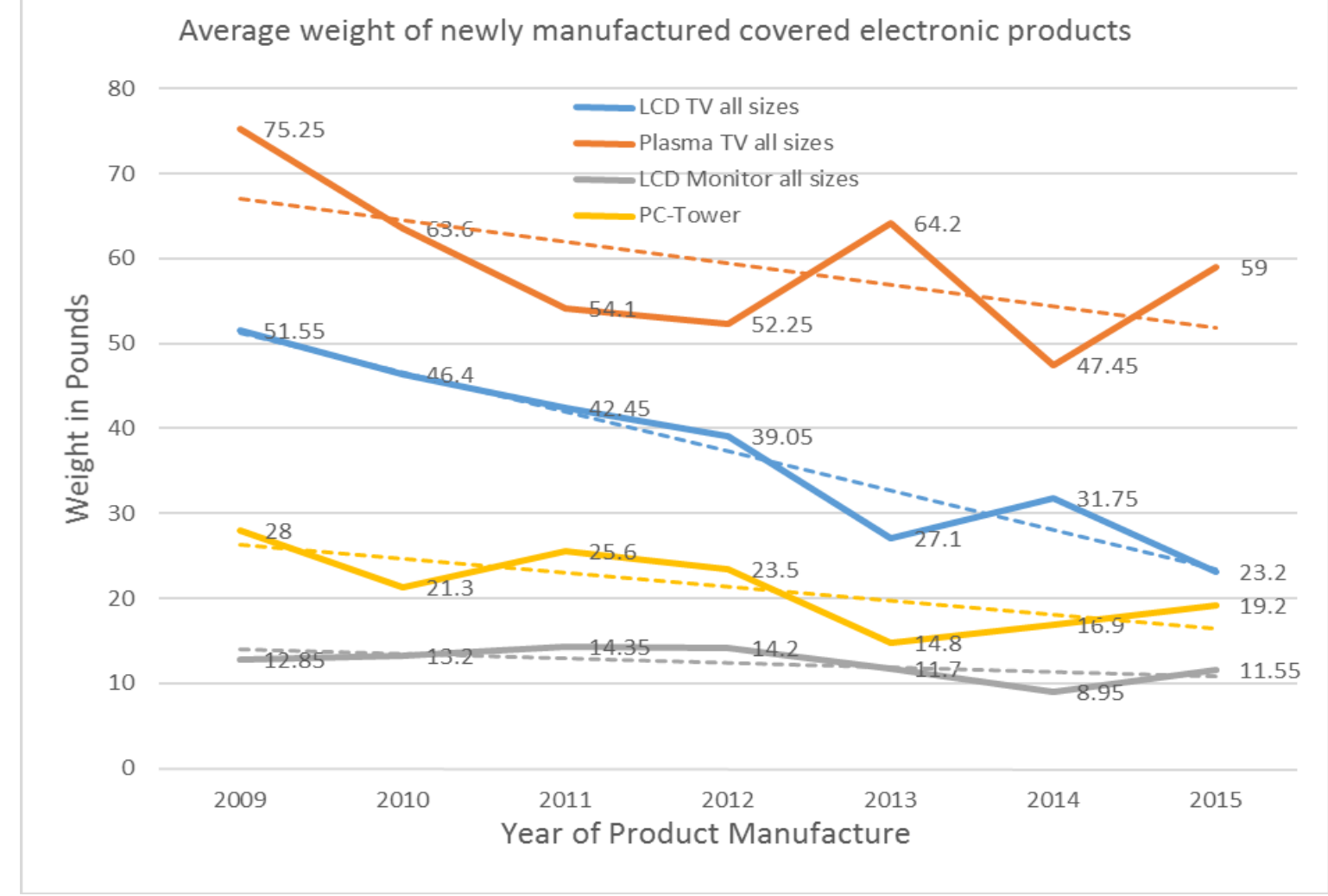
List of CEP Manufacturers (brand names) participating in the Standard Plan 2015\*

302	USA LuguLake Industrial Investment Co.,Ltd
303	USA111 Inc
304	VAR Corporation
305	Venturer Electronics Inc
306	VGH Computer Services
307	Vicon
308	ViewSonic Corp World HQ
309	Visual Land
310	Vitek Industrial Video Products, Inc.
311	VIZIO INCORPORATED
312	VOXX International Corp.
313	VTech Electronics North America, LLC
314	Vulcan Electronics
315	Wacom Technology
316	Wikipad, Inc.
317	Winntech USA Inc.
318	Wintec Industries, Inc.
319	WolVol Inc.
320	Worldwide Gadgets LLC
321	Worldwide V7 Private Label
322	Worryfree Gadgets LLC
323	Xplore Technologies Corp
324	Yakima Networking
325	YiFang U.S.A Inc
326	YONES TOPTECH CHINA CO LTD
327	Zalman Tech Co., Ltd
328	ZALMEN REISS & ASSOCIATES INC
329	Zebra Computers
330	Zingarr Sales & Marketing, LLC
331	ZOTAC USA, Inc.
332	ZTE USA
333	Z-Tech Computers Inc
334	ZTO Technology, Inc.

Documentation of work done with direct processors used by the Standard Plan to promote and encourage the design for recycling of new products (CEP's) destined for end of life recycling under this program

In the 2009 Annual Report to Ecology the WMMFA outlined a plan describing collaboration with the NCER and the Green Electronics Council to pursue grant funding for a "Close the Loop" registry with the goal being creation of a one stop clearinghouse that would contain a database accessible by manufacturers and processors that would contain specific de-manufacturing hints covering components and contents of the electronic products they receive. This effort was not successful and no grant funds were received. However, based on sampling results of CEP weights for the invoicing period 2009 - 2015 the average weights of CEP's have trended downward considerably (see chart below). Many WMMFA member manufacturers are involved in Dfe and Dfr efforts nationally or globally as the majority of the weight of CEP's covered by the Standard Plan are from manufacturers that also sell worldwide. Approximately 85% of the electronic products collected by the WMMFA now (covered devices) are no longer being manufactured for sale in the US. The chart provided below illustrates the progress in reducing the overall weight of CEP's currently being produced and sold in Washington and is similar in trend to national results.

Average net weights (excludes packaging) by CEP used to convert NPD and IDC unit sales to pounds								
CEP Type	2009	2010	2011	2012	2013	2014	2015	weight variance % 09 to 15 - where applicable
	Average lb.	Average lb.	Average lb.	Average lb.	Average lb.	Average lb.	Average lb.	
TV LCD 17-39"	24.4	24.2	19.4	18.7	15.7	13.4	11.8	-52%
TV LCD Over 40"	78.7	68.6	65.5	59.4	38.5	50.1	34.6	-56%
TV Plasma 17-39"	42.1	36.2	41.5	41.5	n/a	42.1	negligible volume	n/a
TV Plasma Over 40"	108.4	100.8/81.3	66.7	63	64.2	52.8	59	-46%
TV Rear Projection>40"	109.4	108.3	87.8	94.2	107.8	113.7	negligible volume	n/a
TV Direct View 17-39"	89.6	91.1	84.3	92.8	35.3	35.3	negligible volume	n/a
LCD Monitor Under 19"	9.8	9.9	10.3	9.3	10.4	9.2	9.9	1%
LCD Monitor Over 19"	15.9	16.5	18.4	19.1	13	8.7	13.2	-17%
TABLETS	n/a	n/a	n/a	1.6	1.3	1.2	1.2	n/a
E-READERS	n/a	n/a	n/a	0.7	1	0.6	0.7	n/a
Laptop 3 lbs. and less	2.4	2.5	2.7	2.8	2.7	2.4	2.5	4%
Laptop > 3-5 Lbs	4.1	4.1	4.3	3.9	4.1	4.2	4.3	5%
Laptop >5-7 Lbs	6.7	5.9	5.9	5.9	5.7	5.9	5.9	-12%
Laptop Over 7 Lbs	10.2	10.3	10.4	8.3	8.6	8.4	9.1	-11%
All Laptops average	5.9	5.7	5.8	5.2	5.3	5.4	5.2	-12%
PC-Tower	28	21.3	25.6	23.5	14.8	16.9	19.2	-31%
Portable DVD	n/a	n/a	n/a	n/a	n/a	2.9	2.4	n/a
<b>Sum TTL weight all CEP's</b>	<b>535.6</b>	<b>485.9</b>	<b>448.6</b>	<b>449.9</b>	<b>369.9</b>	<b>373.2</b>	<b>179</b>	<b>-67%</b>



**PROCESSING COSTS - DFR —2015**  
 Each of the processors used by the Standard Plan must comply with the "preferred processing standards" as defined in the "Environmentally Sound Management and Performance Standards for Direct Processors." An early survey sent out in 2009 to the Washington state processors used by the Authority revealed these recommendations, in order of perceived impact and importance, pertaining to reducing the overall cost to manufacturers for processing, and for the recycling or diversion of a higher percentage of materials of concern.

1. Flat Panels will become a larger percentage of material to be recycled in the future due to the current proliferation of LCD and plasma TV's and LCD monitors being sold now. Processors need an outlet for CRT Glass and LCD screens in order to reduce processing costs to manufacturers.
2. Eliminate multi laminated materials and allow for easy separation of plastics from metals from lamps from glass so that the materials separation cost does not exceed the compensation from recycling the material. Assist in providing buy back opportunities for recovered plastics and other reusable items.
3. New technologies in manufacture of CEP's should allow for more automated dismantling using snap out fittings that may be accommodated by automated processes for dismantling. Identify components containing hazardous materials for easier and more efficient and complete removal and recycling.
4. Removing or reducing lead from glass and circuit boards would reduce downstream processing costs. Reduce or eliminate beryllium, cadmium, mercury and lithium (batteries).

These recommendations, as provided by the participating Washington State Standard Plan processors, are not a new revelation to manufacturers. They are shared with all participating manufacturers as collective information that summarizes some of the obstacles to lowering our (WMMFA) collective processing costs.

## Re-use information -2015

Based on feedback from our network of collectors typically involved in refurbishment and/or resale of used electronics the ratio of reused to recycled products varies considerably by type of collector, and, type of product. Many of our non-profit collectors focus on refurbishing and reuse operations with recycling as the secondary option. Since the E-Cycle Washington program was designed primarily as an end of life program for unwanted electronics many of our collectors focus on getting CEP's to the program for responsible recycling of contents due to the low sales value of refurbished equipment in relation to the sales price of new equipment available at retail. For 2015 we estimate that a weight equivalent to approximately **250,000 pounds of COMPUTERS** (laptops and towers) were put into reuse by our collectors. We estimate a negligible amount (**<1%**) of **CRT TELEVISIONS** were put to reuse. Of **FLAT PANEL TELEVISIONS** (plasma, LCD, and LED) we estimate that about **53,000 pounds** were sent to reuse by collectors. **CRT MONITOR reuse is negligible (0%)** while approximately **34,000 pounds of FLAT SCREEN (LCD) MONITORS** were sent to reuse via resale at the collector level. These pounds are NOT included in our collected pounds reports as they are sent to re-use directly by the collectors and therefore not "processed" within the E-cycle program. Including the 71,400 pounds of reuse reported by our processors **approximately 408,400 pounds of CEP materials, in total**, were sent to refurbishment and/or reuse. Therefore, approximately 17% of the re-use volume is managed at the processor level with 83% occurring at the collector level.

# WMMFA Annual Program Revenue and Expenses - 2015

Figures based on "cost" basis: I.E.: Revenue recorded as received and expenses recorded when paid

Audited financial statements for publication in the WMMFA annual report on an accrual basis will be available mid 2016 (for calendar year 2015 statements)

<b>Program net CEP pounds collected and processed 2015 -----&gt;</b>	<b>42,585,847</b>	
<b>Total REVENUE from manufacturer payments to plan - including reserve carry forward from 2014</b>	<b>\$11,744,641</b>	<b>100%</b>
<b>OPERATIONAL Expenses</b>		
Total COLLECTION EXPENSES - payments to registered collectors and for CEP materials from "covered" events	\$3,920,128	35.0%
Total TRANSPORTATION EXPENSES - purchased from registered transporters and paid to collectors that transport	\$1,646,394	14.7%
Total NET PROCESSING EXPENSES - payments to registered processors	\$5,240,605	46.8%
Public OUTREACH including advertising, educational and promotional efforts	\$26,404	0.2%
<b>TOTAL OPERATIONAL DIRECT and SERVICE PROVIDER EXPENSES</b>	<b>\$10,833,531</b>	<b>96.7%</b>
<b>ADMINISTRATIVE Expenses</b>		
Salaries and wages, including payroll taxes	\$321,606	2.87%
Professional services: legal and accounting	\$15,399	0.14%
Rent expense	\$5,200	0.05%
Travel expenses - board and employees	\$6,966	0.06%
Office supplies	\$3,522	0.031%
Insurance expense	\$5,154	0.05%
Telephone and internet expenses	\$2,986	0.027%
Meetings and seminars	\$1,471	0.013%
Postage and delivery	\$1,670	0.015%
Office hardware and IT equipment including security system	\$2,921	0.026%
Utilities	\$1,831	0.016%
Bank service charges	\$1,123	0.010%
Miscellaneous	\$1,981	0.018%
<b>TOTAL ADMINISTRATIVE EXPENSES</b>	<b>\$371,830</b>	<b>3.3%</b>
<b>Total Administrative and Operational EXPENSES</b>	<b>\$11,205,361</b>	<b>100.0%</b>
<b>*NET Reserves to carry forward to 2015 and/or available as credit to manufacturers on future invoices</b>	<b>\$539,280</b>	<b>4.6%</b>
<b>Total program cost per pound collected and processed 2015</b>	<b>\$0.263</b>	

\* Standard Plan finance policy requires reserves to be maintained between 9% and 20% of quarterly manufacturer share expenses

This report was prepared per WAC 173-900-800 and submitted using the template provided by Ecology (converted to workbook) and updated/improved to include additional information required by SHB 1498 passed in 2013. The information within this report/workbook was compiled using sources available to the WMMFA including actual and estimated data from service providers to the WMMFA as outlined in the Standard Plan.

Submitted electronically on February 26, 2016 to Miles.Kuntz@ecy.wa.gov

Authorized signor WMMFA  
John Friedrich, Executive Director

A handwritten signature in black ink that reads "John Friedrich". The signature is written in a cursive style with a large initial "J" and "F".