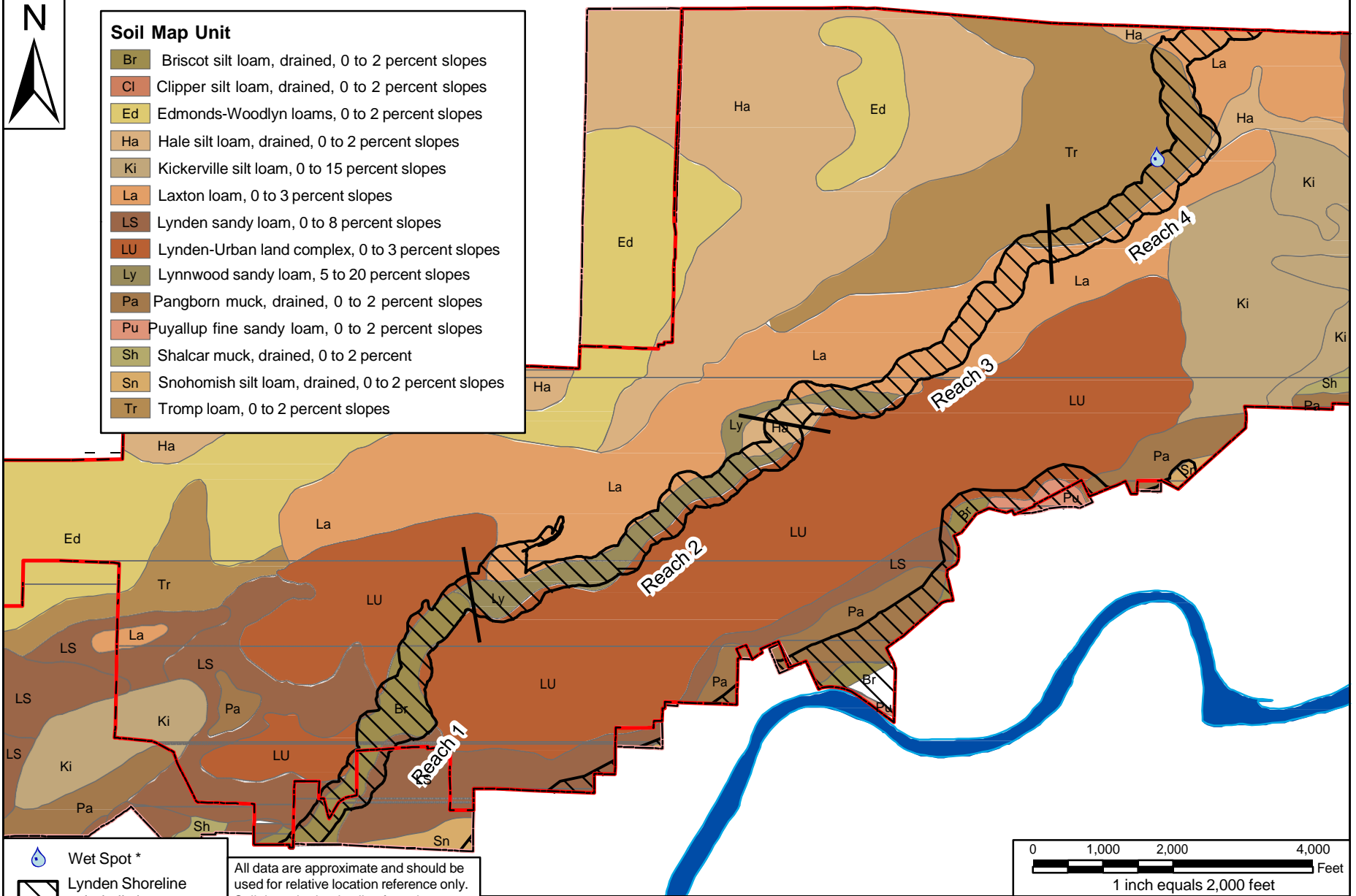




### Soil Map Unit

- Br Briscot silt loam, drained, 0 to 2 percent slopes
- Cl Clipper silt loam, drained, 0 to 2 percent slopes
- Ed Edmonds-Woodlyn loams, 0 to 2 percent slopes
- Ha Hale silt loam, drained, 0 to 2 percent slopes
- Ki Kickerville silt loam, 0 to 15 percent slopes
- La Laxton loam, 0 to 3 percent slopes
- LS Lynden sandy loam, 0 to 8 percent slopes
- LU Lynden-Urban land complex, 0 to 3 percent slopes
- Ly Lynnwood sandy loam, 5 to 20 percent slopes
- Pa Pangborn muck, drained, 0 to 2 percent slopes
- Pu Puyallup fine sandy loam, 0 to 2 percent slopes
- Sh Shalcar muck, drained, 0 to 2 percent
- Sn Snohomish silt loam, drained, 0 to 2 percent slopes
- Tr Tromp loam, 0 to 2 percent slopes



- Wet Spot \*
- Lynden Shoreline Jurisdiction
- Lynden City Limits
- Lynden UGA
- Nooksack River

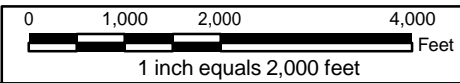
All data are approximate and should be used for relative location reference only. Soil data obtained online from the NRCS Soil Data Mart.  
 \* Wet Spot = "A somewhat poorly drained to very poorly drained area that is at least two drainage classes wetter than the named soils in the surrounding map unit. Typically 1 to 5 acres."

Prepared for:



**City of Lynden**

Prepared by:

**Soil Map Units  
Within City Limits**

Lynden SMP 8/18/10	<b>Figure 8</b>
-----------------------	-----------------