

Shoreline Environment Designations

City of Montesano
Shoreline Master Program

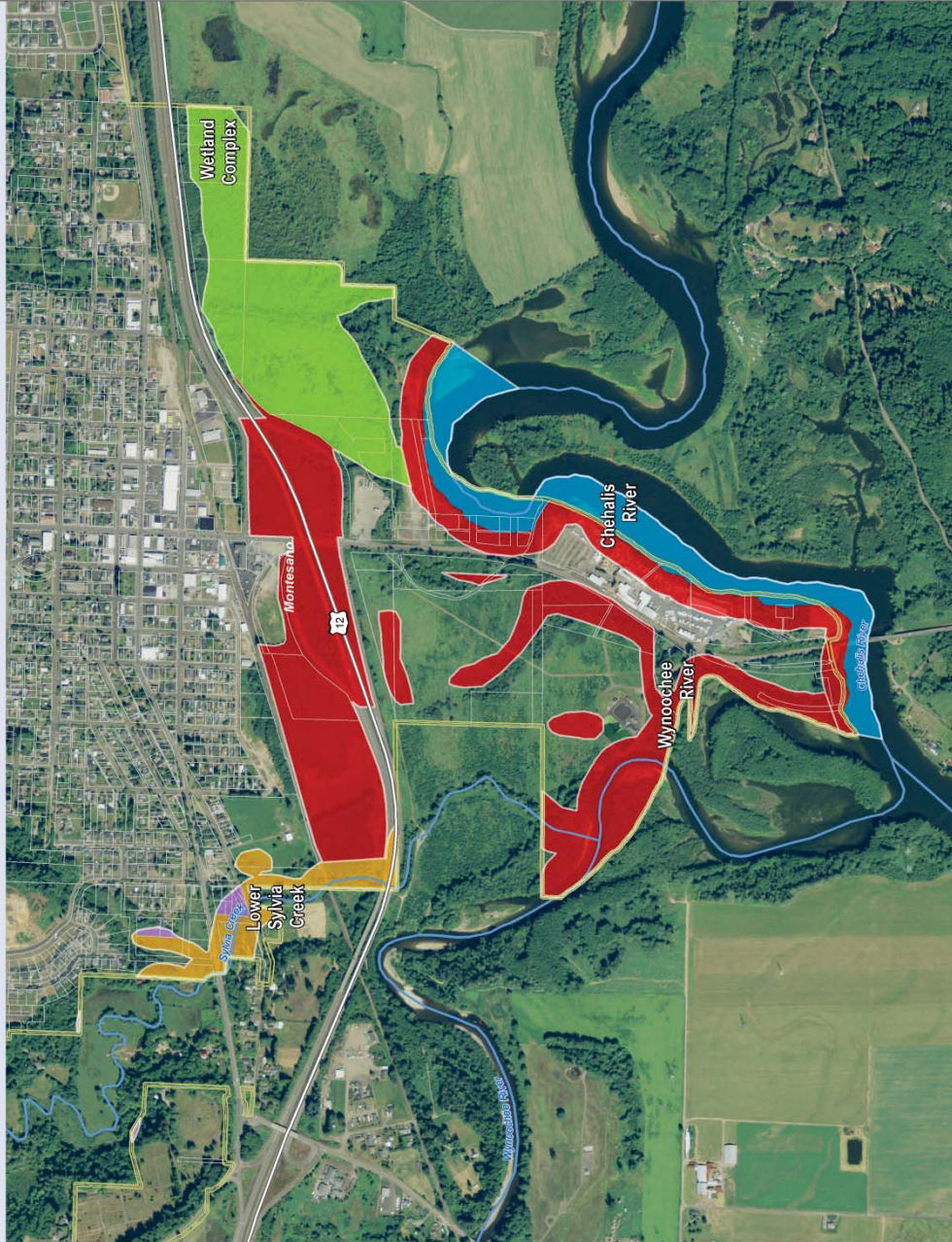
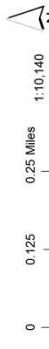


Figure 14.2: Chehalis River & Sylvia Creek
Date: 6/24/2016

Shoreline Environment Designation

- High Intensity
- Shoreline Residential
- Urban Conservancy
- Natural
- Aquatic
- Parcels
- Montesano City Boundary
- SMA Lakes
- SMA Rivers
- Highways



Source: Gray Harbor County, USFWS MW (2011), FEMA Preliminary DFRM (2013), DMR, WSDOT Ecology, MRCS MAP (2013)
Shoreline jurisdiction boundaries depicted on this map are approximate. They have not been formally delineated or surveyed and are intended for planning purposes only. Specific jurisdiction may be needed to determine jurisdictional stream on this map.

