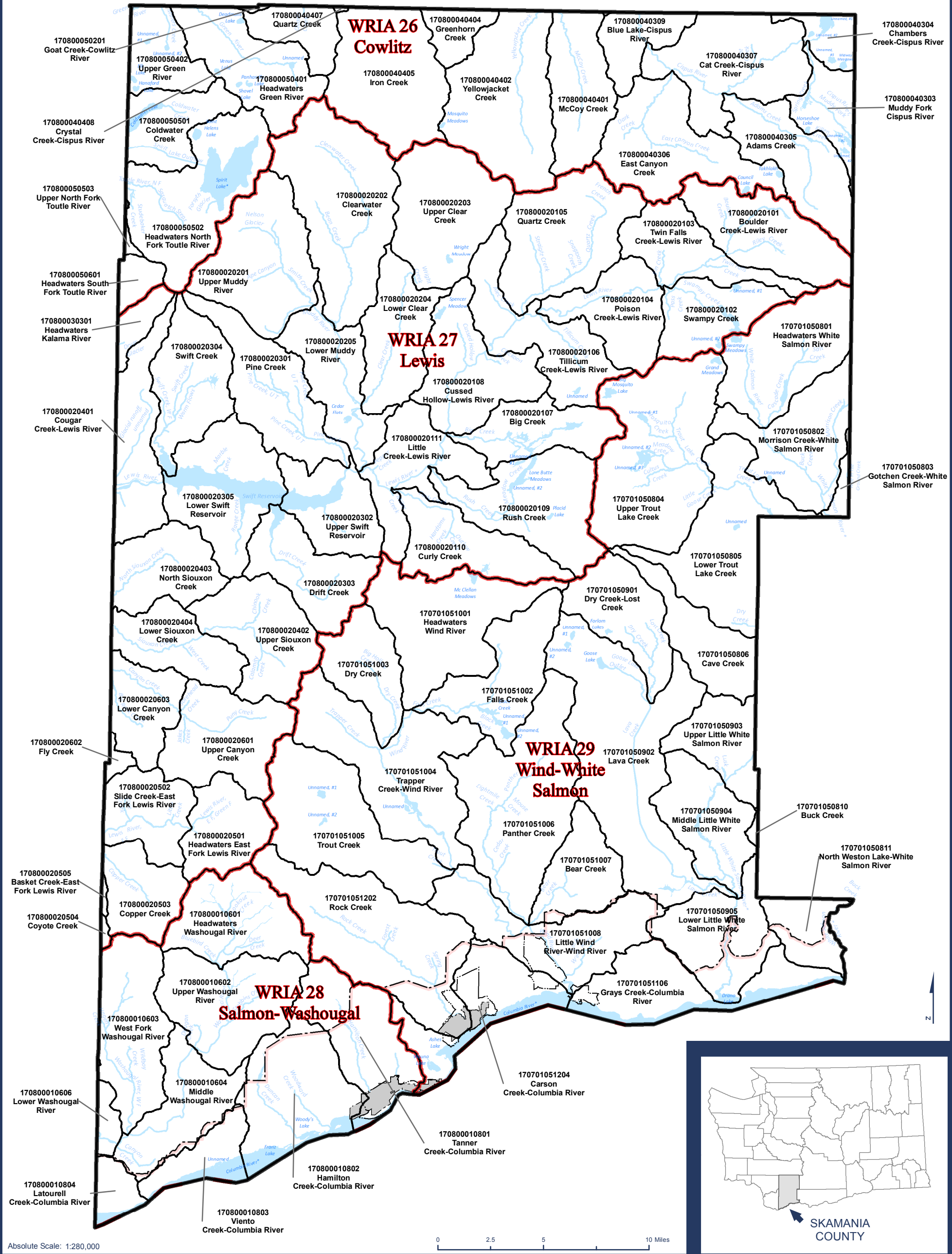
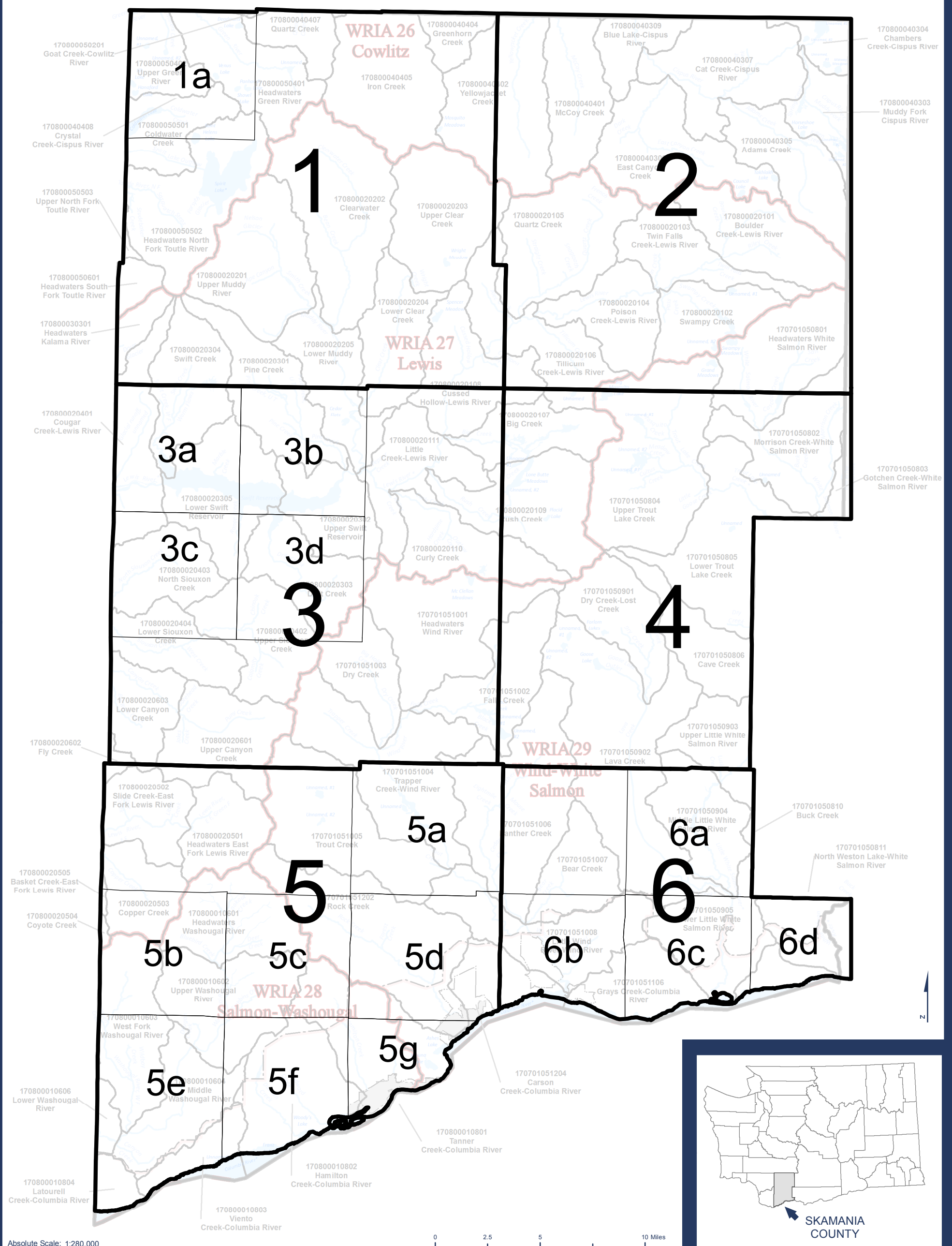


**Shoreline Inventory and Characterization Report
Skamania County, Washington**

**Appendix A
Map Portfolio**





NARRATIVE:

METHODS: The Watershed Boundary Dataset (WBD) was obtained from USGS. The data uses units and subunits which are defined by their Hydrologic Units (HU) Code. This map shows units at the 12 digit aggregations. Watershed Inventory Area Boundary (WRIA) data was obtained from Ecology.

LEGEND:

-  Skamania County boundary
 Nat'l Scenic Area Bndy
 Urban Area Bndy
 City Limits
 WBD HU 12 Digit
 WRIA boundary
 Shoreline Jurisdiction

SHORELINES DISCLAIMER: Shoreline jurisdiction boundaries depicted on this map are approximate. They have not been formally delineated or surveyed and are for planning purposes only. Additional site-specific evaluation may be needed to confirm/verify information shown on this map. Shoreline jurisdiction will be determined at time of project review using the best available site-specific information.



SKAMANIA COUNTY

DISCLAIMER: This map product was prepared by Skamania County and is for information purposes only. It may not have been prepared for, or be suitable for legal, engineering, or surveying purposes. Users of this information should review or consult the primary data and information sources to ascertain the usability of the information.

INVENTORY AND CHARACTERIZATION INDEX MAP