

DEPARTMENT OF ECOLOGY

MAR 04 2019

WATER QUALITY PROGRAM

**ANNUAL PRE-TREATMENT PLAN  
FOR ZOSTERA JAPONICA CONTROL ON COMMERCIAL  
CLAM BEDS IN WILLAPA BAY  
FOR  
NORTHERN OYSTER CO.**

**Submitted to:**

Washington Department of Ecology

February 28, 2019

**Author:**

David Beugli

WGHOGA

## Annual Pre-Treatment Plan

The locations of acreage planned for treatment in 2019, including GPS coordinates of each corner of the area, size in acres of each area, and cooperating adjacent land owners are shown in Table 1.

Table 1. Coordinates of the overall area where japonica control will be implemented. Actual acres to be treated will be less than those indicated by the overall bed boundaries.

Bed Name	Parcel	Acres	Corner Coordinates		Cooperating Landowners
			Latitude	Longitude	
TL530	12112255530	2	46.5079	-124.0285	Taylor Resources Inc.
			46.5085	-124.0278	
			46.5081	-124.0260	
			46.5075	-124.0262	
E249	79005000249	5	46.5320	-124.0255	Taylor Resources Inc.
			46.5319	-124.0239	
			46.5331	-124.0239	
			46.5331	-124.0218	
			46.5347	-124.0217	
E215	79005000215	10	46.5346	-124.0250	Heckes Clams Inc.
			46.5590	-124.0187	
			46.5589	-124.0135	
			46.5609	-124.0137	
			46.5610	-124.0127	
E114	79005000114	15	46.5666	-124.0127	
			46.5667	-124.0191	
			46.5667	-124.0111	
			46.5738	-124.0131	
			46.5769	-124.0175	
E148	79005000148	20	46.5769	-124.0210	Willapa Bay Shellfish
			46.5665	-124.0163	
			46.6104	-124.0396	
			46.6108	-124.0384	
			46.6139	-124.0387	
			46.6169	-124.0396	
			46.6188	-124.0379	
			46.6192	-124.0389	
			46.6163	-124.0416	
			46.6160	-124.0426	
			46.6126	-124.0405	
			46.6105	-124.0395	

C88	79003001088	10	46.5000	-123.9834	
			46.5043	-123.9804	
			46.5040	-123.9769	
			46.5000	-123.9759	
TL153	13113755153	15	46.5591	-124.0247	
			46.5625	-124.0241	
			46.5625	-124.0189	
			46.5590	-124.0187	
TL53.5	12110355053	15	46.5625	-124.0241	
			46.5667	-124.0237	
			46.5667	-124.0191	
			46.5625	-124.0189	
D99	79004000099	10	46.4722	-124.0244	Weigardt & Sons Inc. Heckes Clams Inc.
			46.4722	-124.0263	
			46.4677	-124.0244	
			46.4676	-124.0248	
TL620	12112255620	8	46.5081	-124.0257	Taylor Resources Inc. Heckes Clams Inc.
			46.5081	-124.0238	
			46.5100	-124.0228	
			46.5117	-124.0221	
			46.5117	-124.0233	
			46.5087	-124.0257	

### Annual Pre-Treatment Plan (Maps)

Figures 1-6 show the locations of proposed japonica treatments for 2019. In 2018 treatments occurred on beds TL 53.5, TL153, TL620, E114, E215, E2.

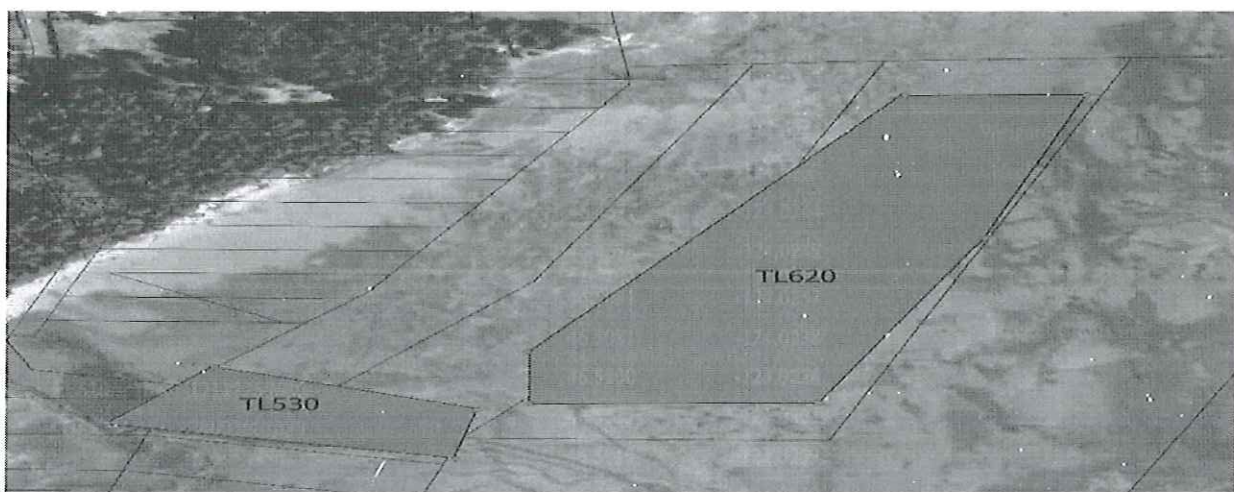


Figure 1. Parcels 12112255530, 12112256620

DEPARTMENT OF ECOLOGY

MAR 04 2019

WATER QUALITY PROGRAM





Figure 2. Parcel 79005000249.

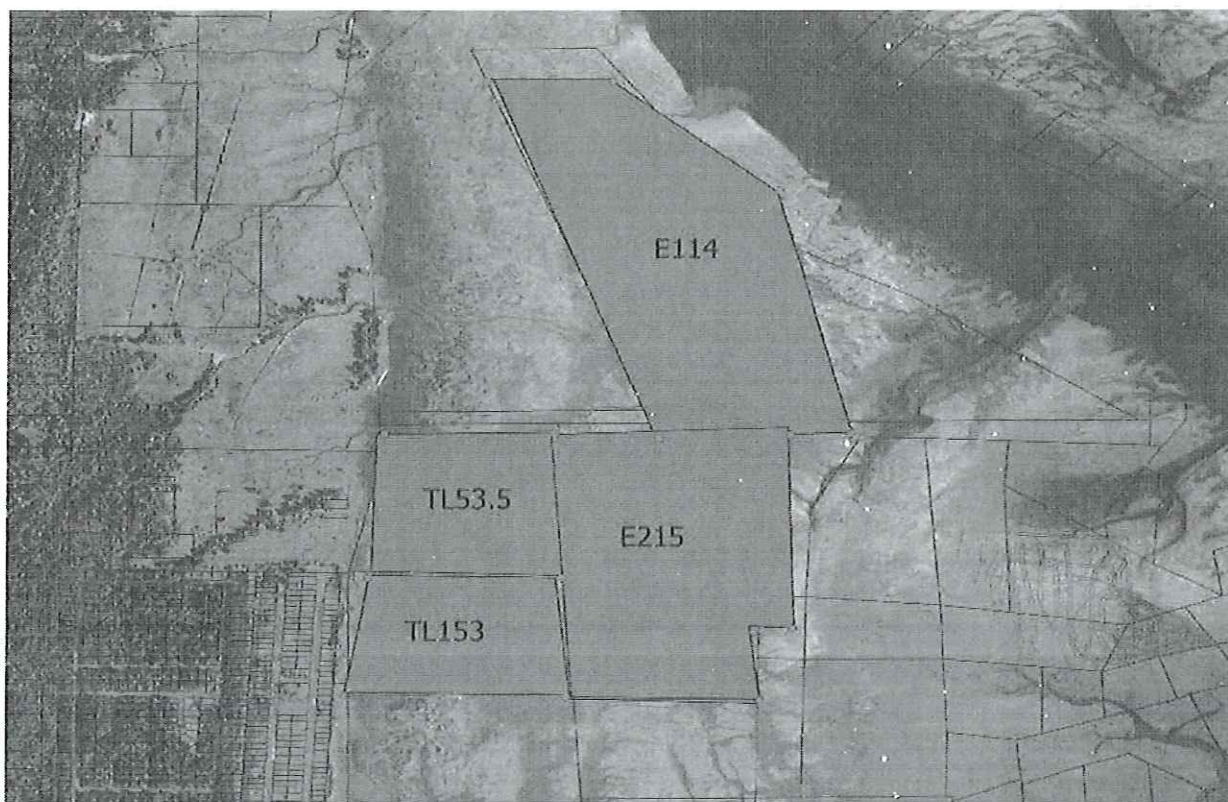


Figure 3. Parcels 79005000215, 79005000114, 12110355053 and 13113755153.

DEPARTMENT OF ECOLOGY

MAR 04 2019

WATER QUALITY PROGRAM



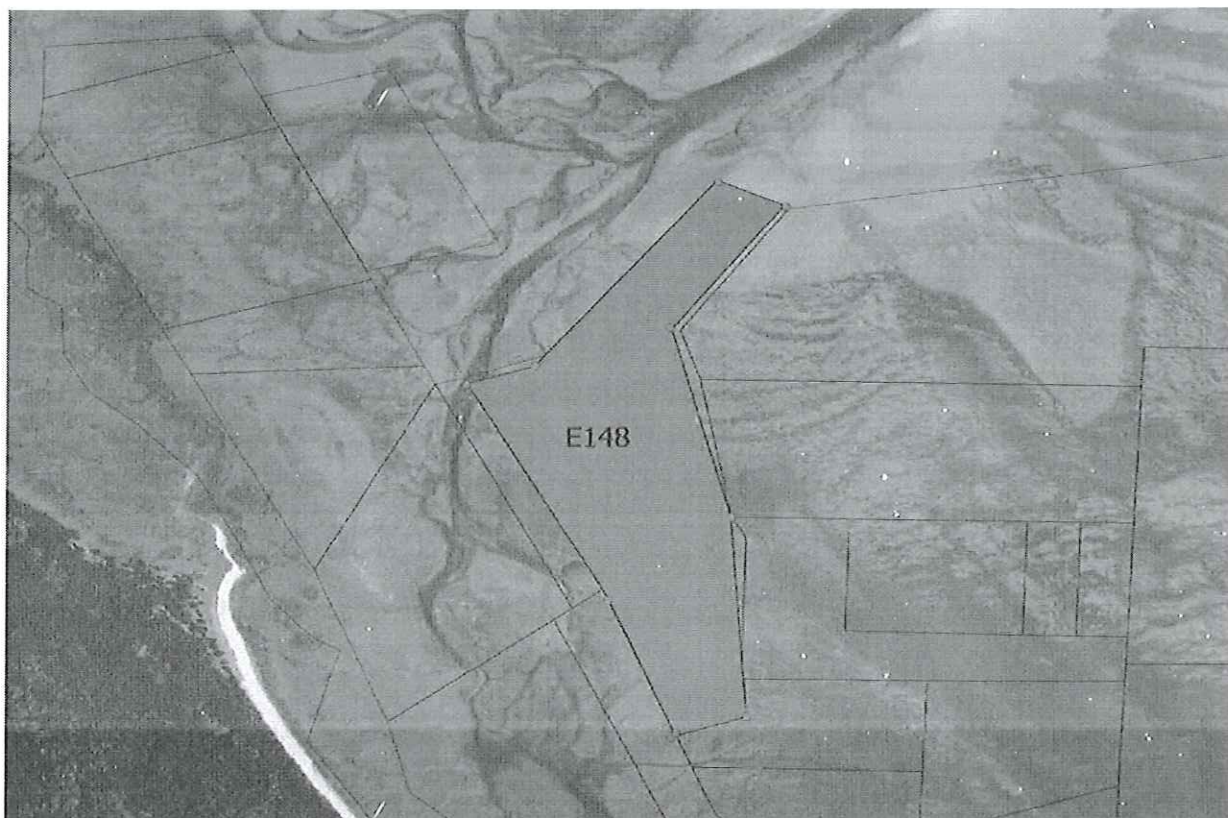


Figure 4. Parcel 79005000148.

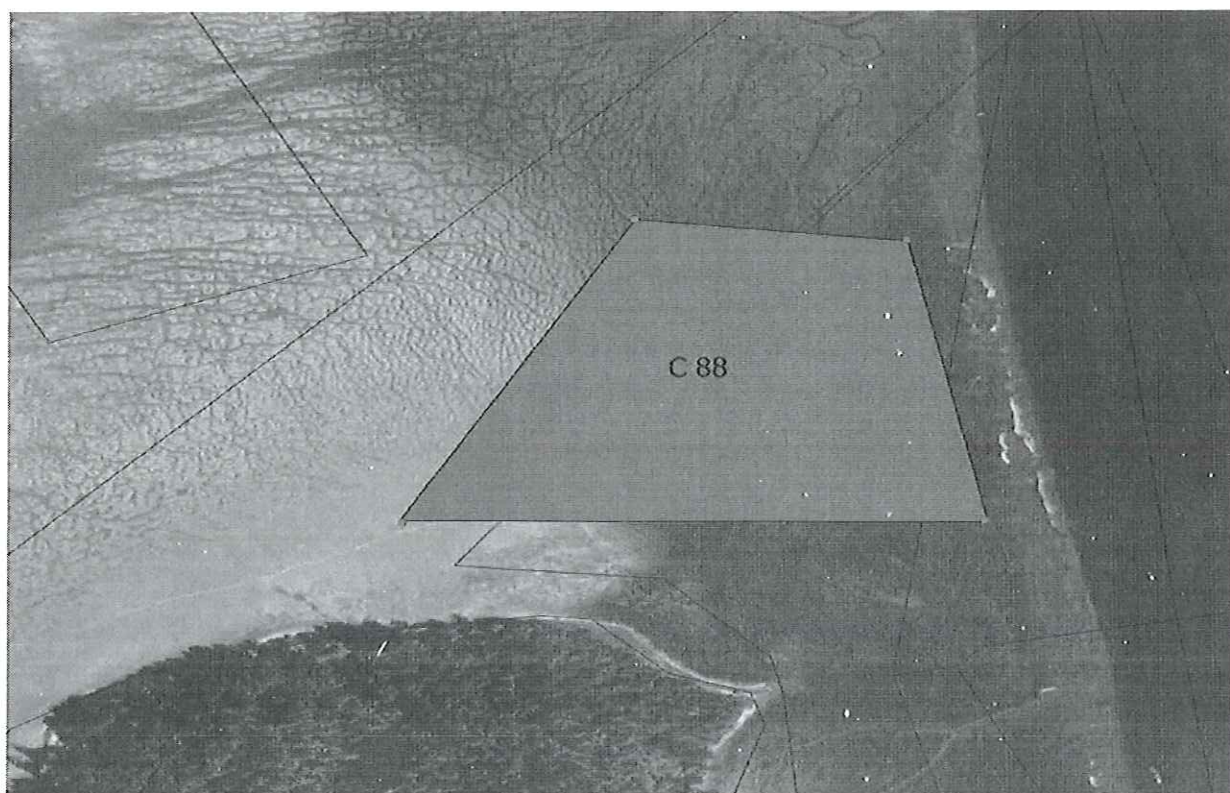


Figure 5. Parcel 79003001088

DEPARTMENT OF ECOLOGY

MAR 04 2019

WATER QUALITY PROGRAM

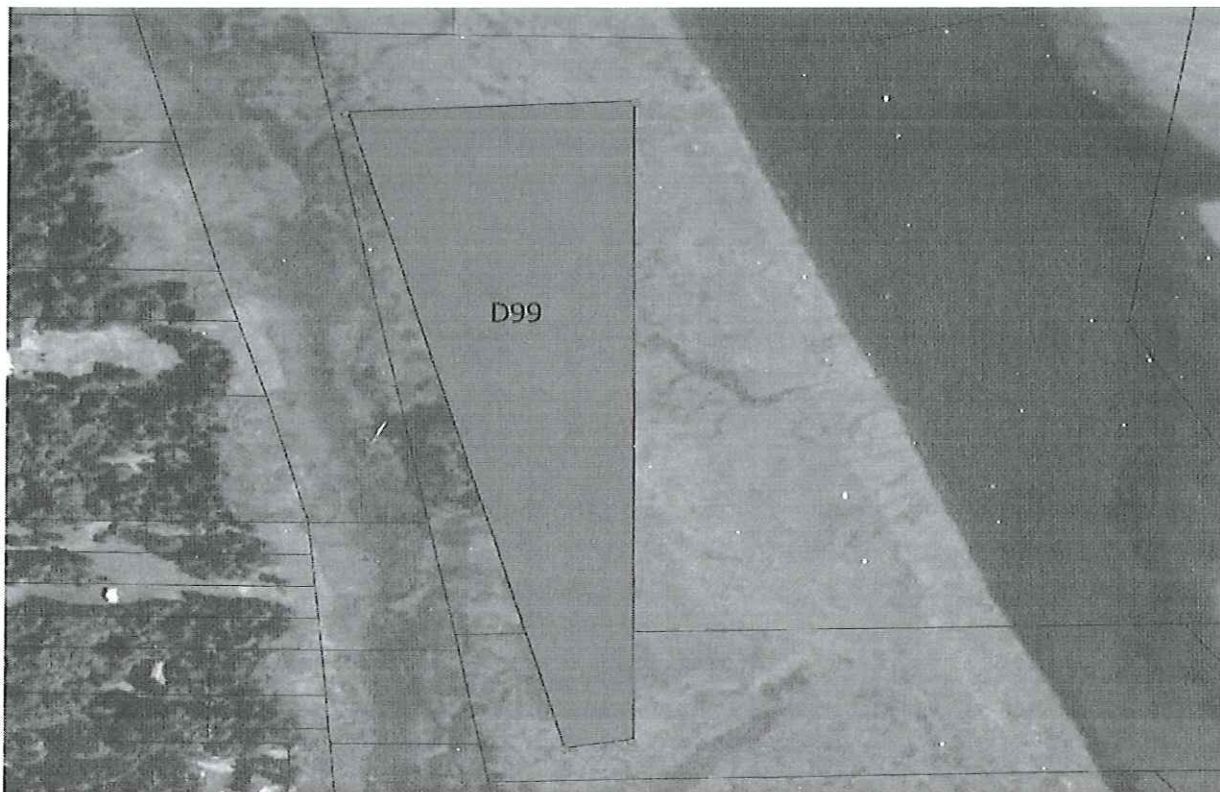


Figure 6. Parcel 790004000099.

### Signature Requirements

*I certify under penalty of law, that this document and all attachments were prepared under my direction or supervision in accordance with a system designed to assure that qualified personnel properly gathered and evaluated the information submitted. Based on my inquiry of those persons directly responsible for gathering information, the information in the Pretreatment Plan is, to the best of my knowledge and belief, true, accurate, and complete and will be updated as necessary. I am aware that there are significant penalties for submitting false information, including the possibility of fine and imprisonment of knowing violations.*

Brian J. Miller      2-28-19

Signature

Date

DEPARTMENT OF ECOLOGY  
MAR 04 2019  
WATER QUALITY PROGRAM