

**ANNUAL PRE-TREATMENT PLAN
FOR ZOSTERA JAPONICA CONTROL ON COMMERCIAL
CLAM BEDS IN WILLAPA BAY
FOR
TAYLOR SHELLFISH COMPANY**

Submitted to:

Washington Department of Ecology

March 1, 2015

Author:

David Beugli

WGHOGA Project Coordinator

Annual Pre-Treatment Plan

The locations of acreage planned for treatment in 2015, including GPS coordinates of each corner of the area, size in acres of each area and cooperating adjacent land owners are shown in Table 1.

Table 1. Coordinates of the overall area where japonica control will be implemented. Actual acres to be treated will be less than those indicated by the overall bed boundaries.

Bed Name	Parcel	Acres	Corner Coordinates		Cooperating Landowners
			Latitude	Longitude	
TL56	12110355056	38.1	46.5481	-124.0132	Heckes Clams Inc.
			46.5482	-124.0224	Station House Oyster Co
			46.5515	-124.0131	
			46.5513	-124.0249	
TL57	12111055057	30	46.5482	-124.0224	
			46.5482	-124.0141	
			46.5335	-124.0243	
			46.5336	-124.0173	
E163	79005000163	20	46.5194	-124.0238	
			46.5133	-124.0188	
			46.5131	-124.0228	
			46.5196	-124.0160	
E77	79005000077	31	46.5336	-124.0173	Dobby Wiegardt
			46.5335	-124.0248	
			46.5288	-124.0233	
			46.5289	-124.0192	
TL193	12111555193	28	46.5289	-124.0153	Heckes Clams Inc.
			46.5249	-124.0249	Coast Seafood's Co.
			46.5250	-124.0173	
			46.5287	-124.0256	
TL59	12111555059	20	46.5249	-124.0249	
			46.5250	-124.0173	
			46.5205	-124.0250	
			46.5207	-124.0155	
TL55	12112755055	5	46.4916	-124.0322	
			46.4916	-124.0299	
			46.4932	-124.0250	
			46.4931	-124.0326	
			46.4913	-124.0248	
TL56	12110351056	10	46.4913	-124.0299	
			46.5515	-124.0140	Heckes Clams Inc.
			46.5513	-124.0249	Northern Oyster Co.
			46.5524	-124.0250	

			46.5525	-124.0145	
E149	79005000149	14	46.5205	-124.0250	
			46.5207	-124.0155	
			46.5194	-124.0261	
			46.5196	-124.0160	
E193	79005000193	8	46.5122	-124.0193	Northern Oyster Co.
			46.5120	-124.0251	
			46.5131	-124.0252	
			46.5133	-124.0188	
D2	79004000002	20	46.4879	-124.0183	Stackpole Harbor Oyster Wiegardt & Sons Inc.
			46.4820	-124.0165	
			46.4806	-124.0198	
			46.4877	-124.0198	
D95	79004000095	20	46.4832	-124.0198	Coast Seafood's Co.
			46.4940	-124.0204	
			46.4940	-124.0214	
			46.4832	-124.0210	
			46.4877	-124.0198	
D101	79004000101	15	46.4398	-123.9799	Coast Seafood's Co.
			46.4365	-123.9714	
			46.4413	-123.9789	
			46.4370	-123.9708	
			46.4376	-123.9760	

Annual Pre-Treatment Plan (Maps)

Figures 1-13 show the proposed locations of japonica treatments in 2015. In 2014 treatments occurred on bed's TL55, TL57, TL59, E77 and E193.



Figure 1. Parcel 12110355056.

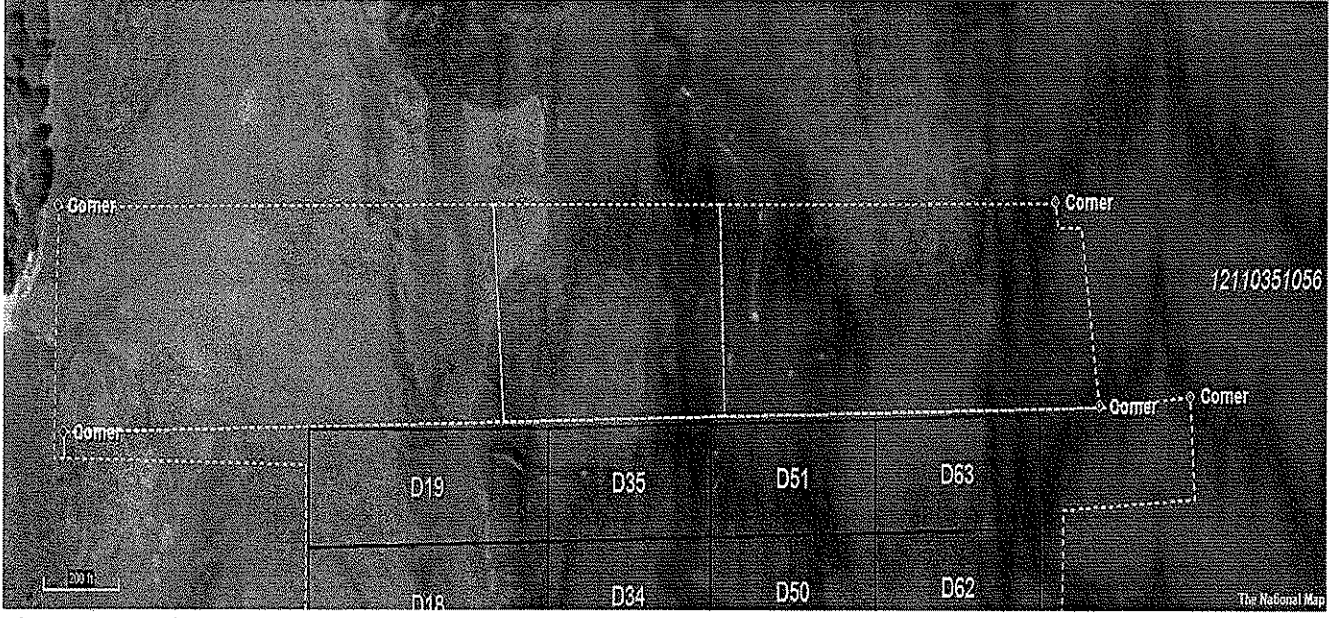


Figure 2. Parcel 12111055057.

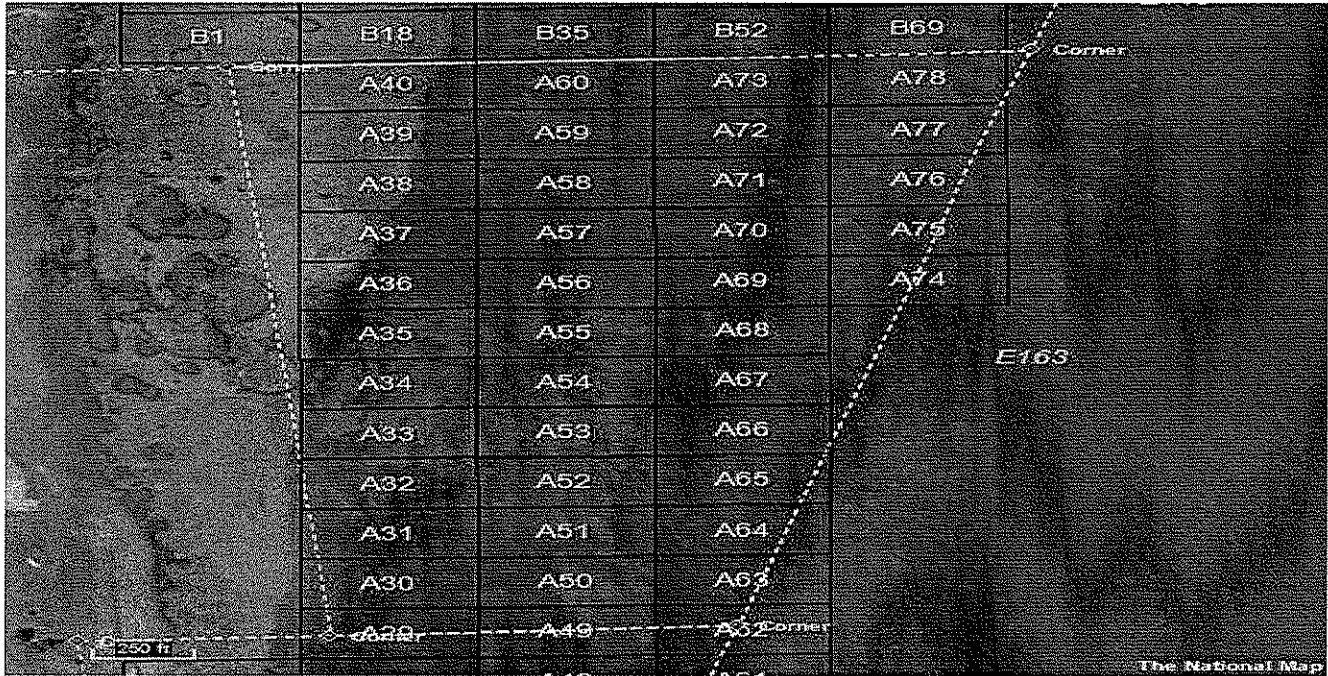


Figure 3. Parcel 79005000163.

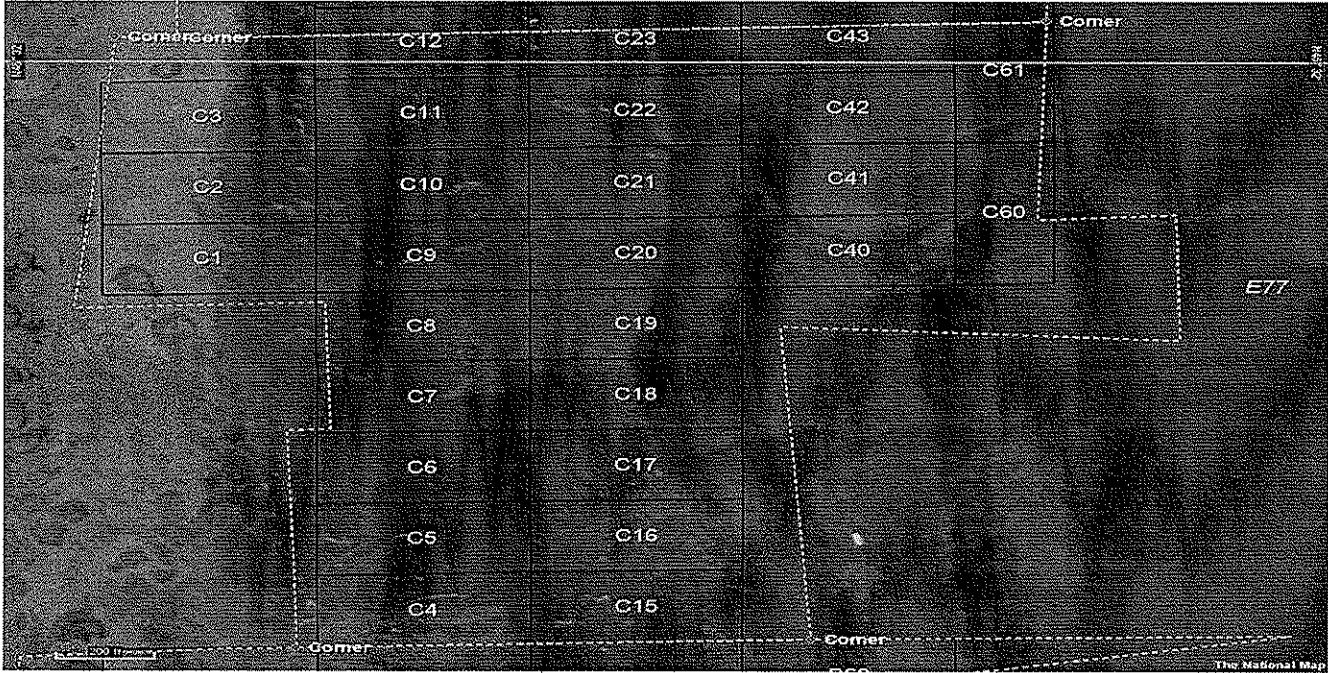


Figure 4. Parcel 79005000077.

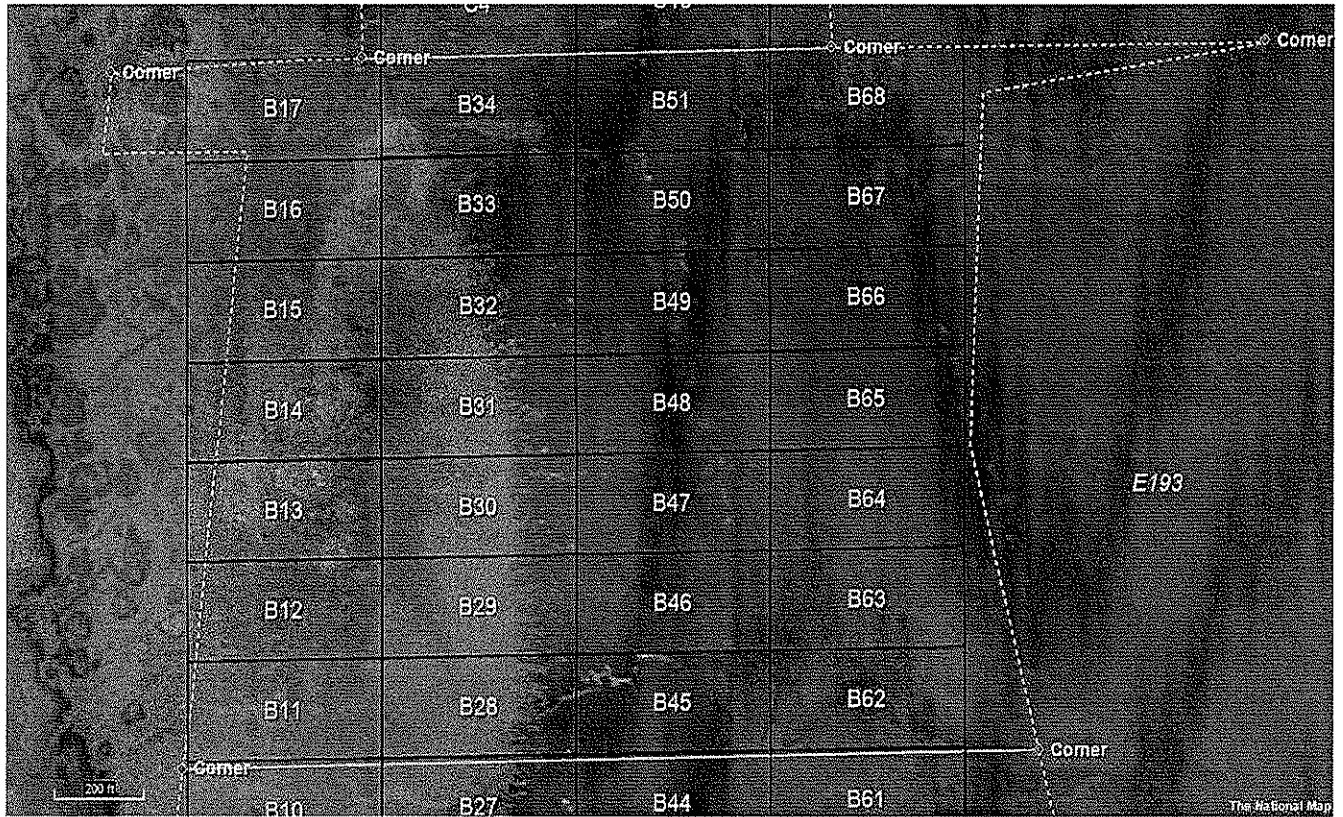


Figure 5. Parcel 12111555193.

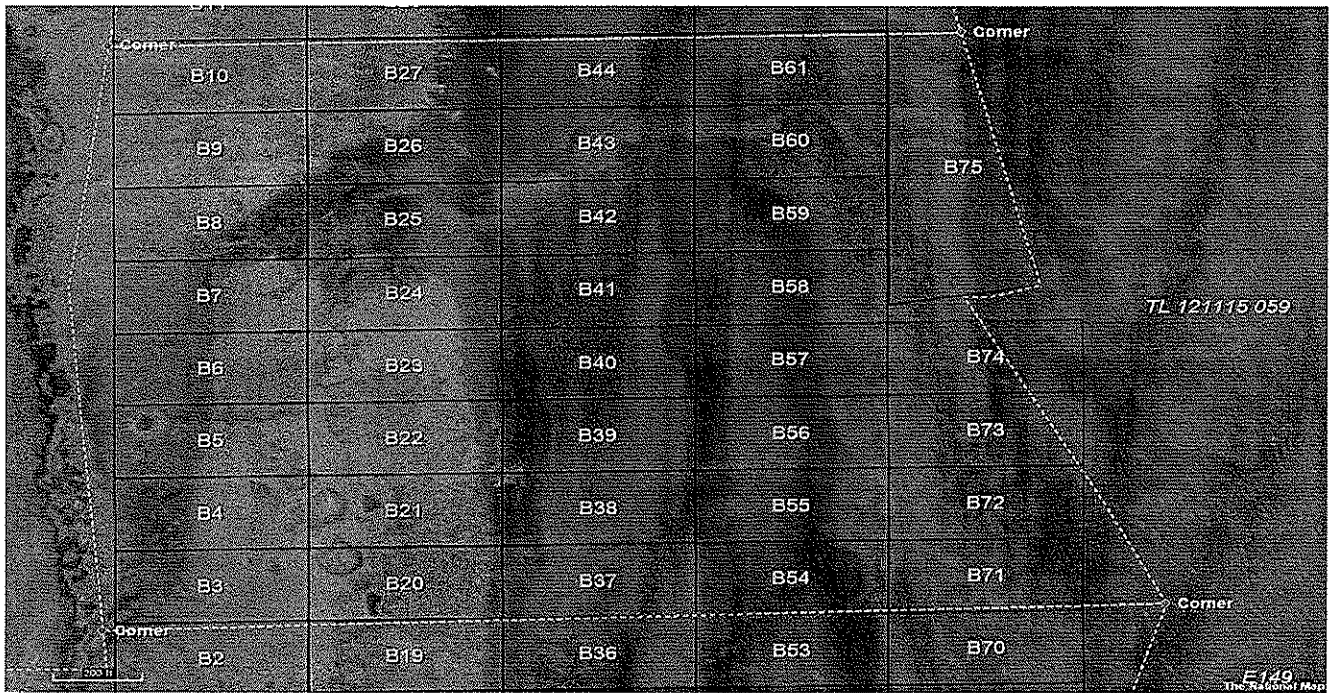


Figure 6. Parcel 12111555059.

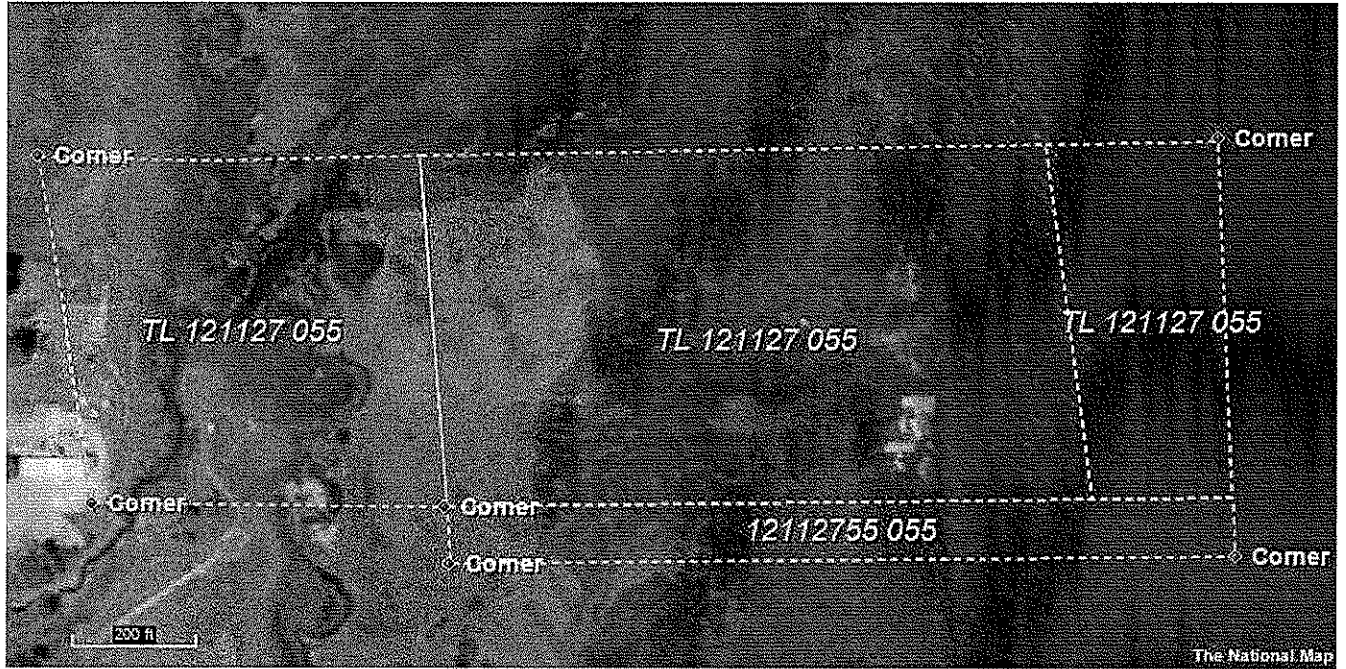


Figure 7. Parcel 121127 055.

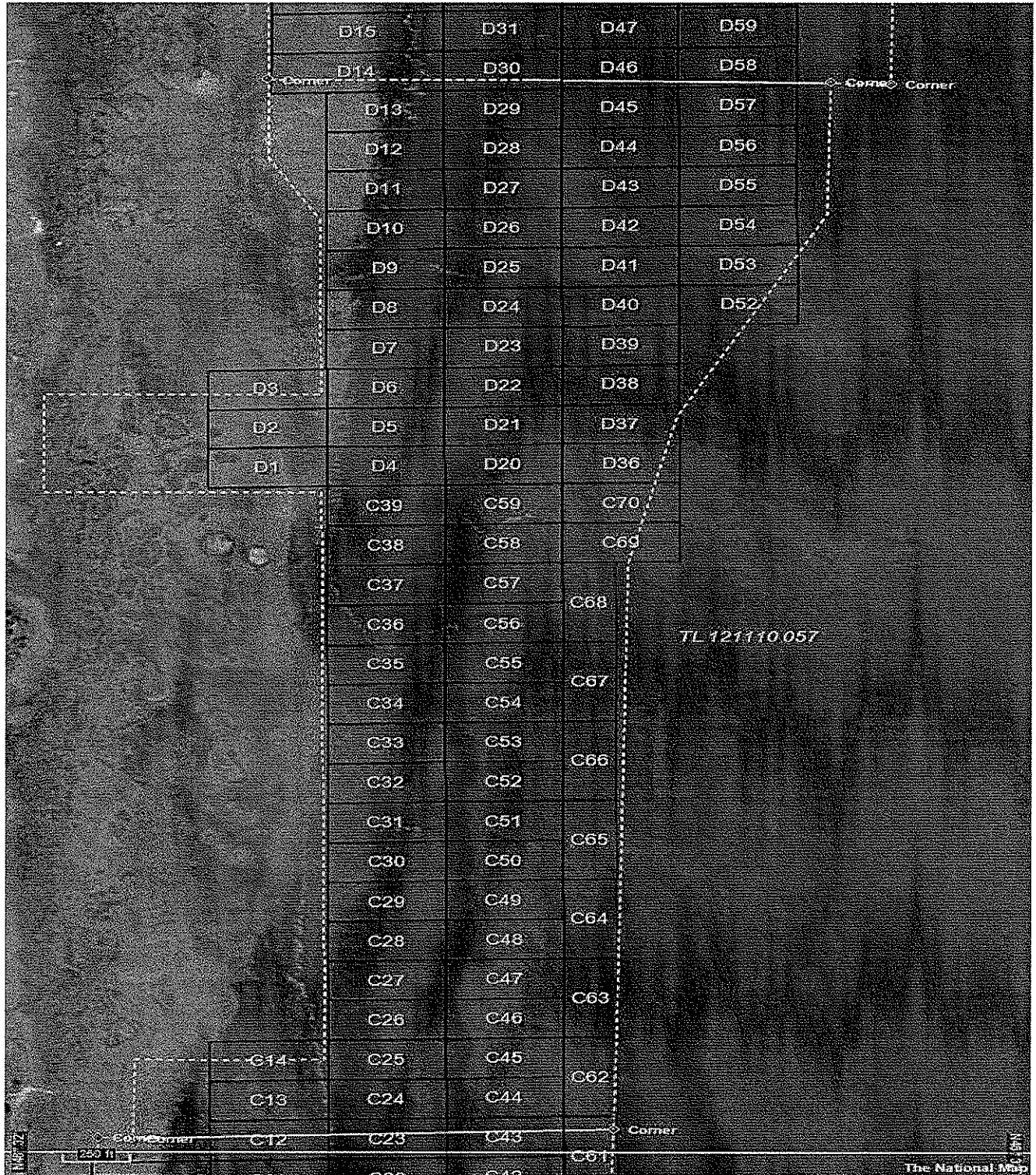


Figure 8. Parcel 1211105057.

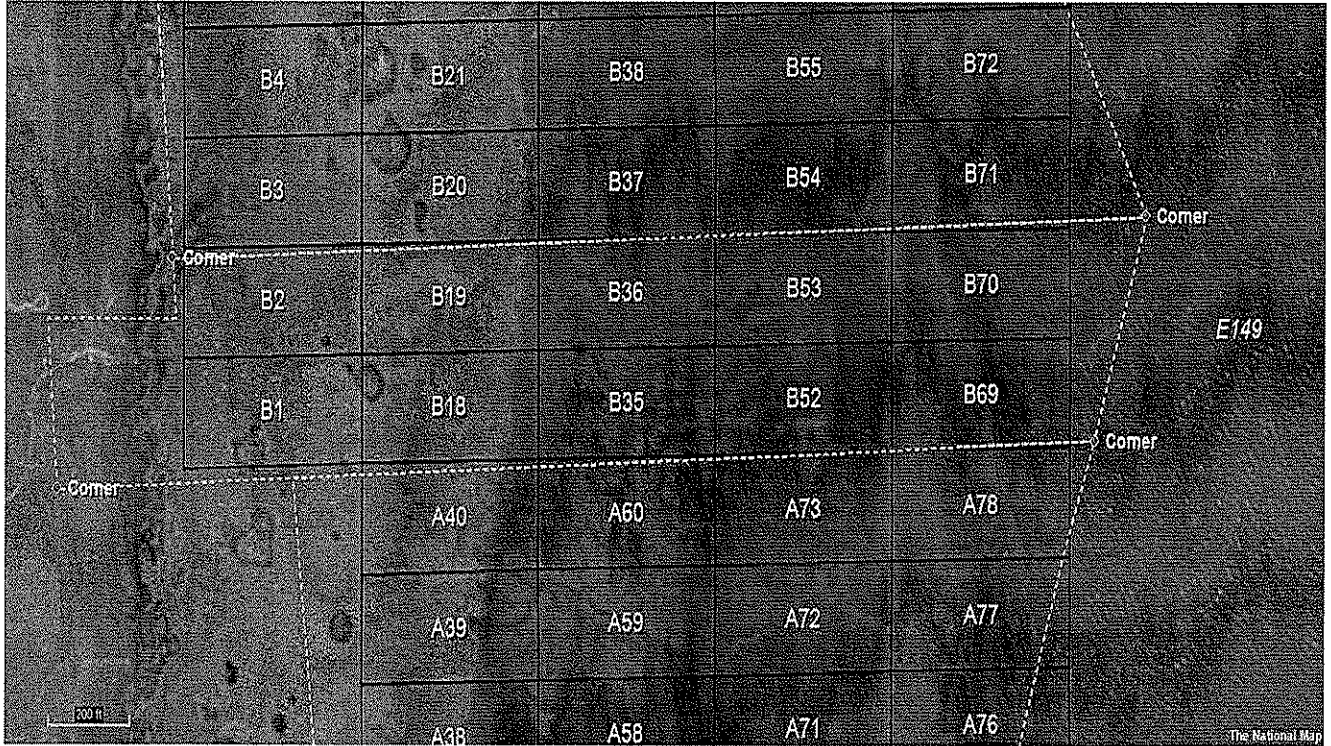


Figure 9. Parcel 79005000149.

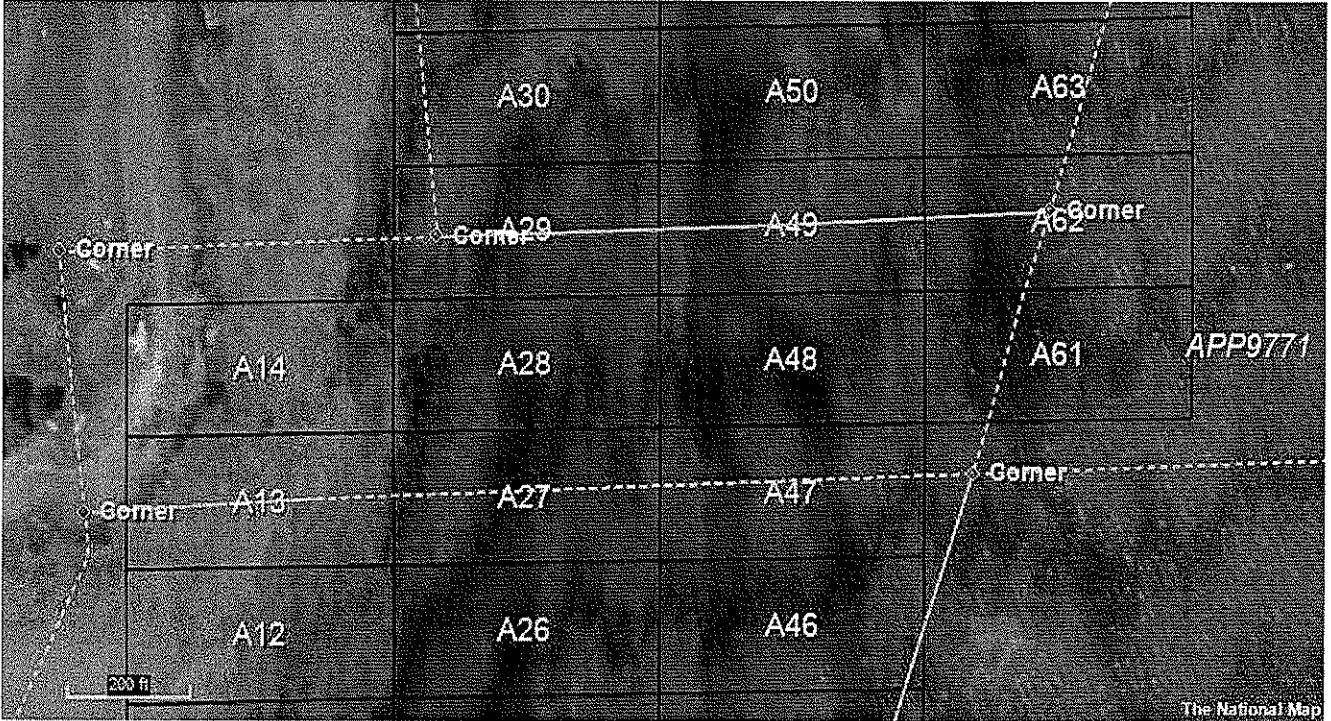


Figure 10. Parcel 79005000193.

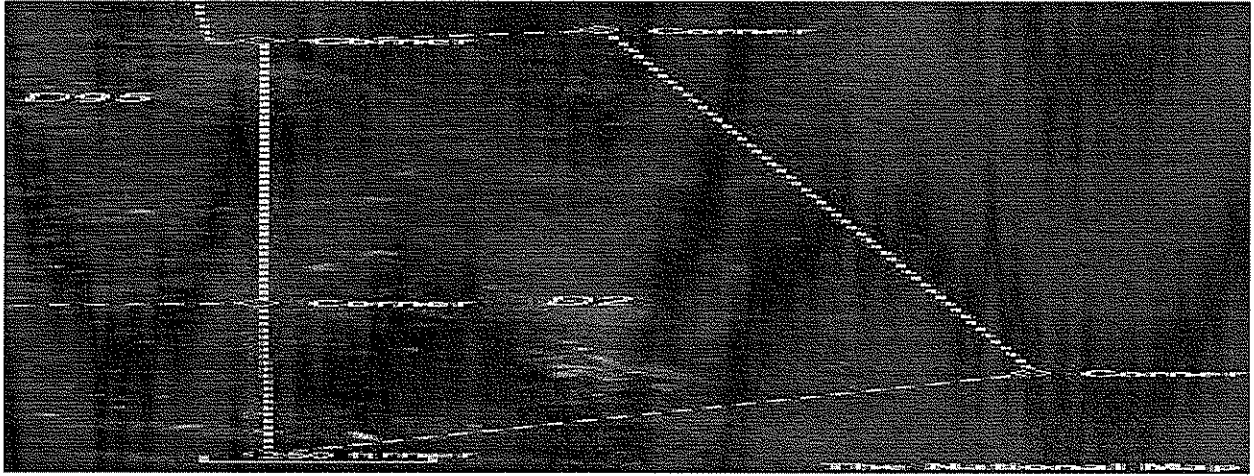


Figure 11. Parcel 79004000002.

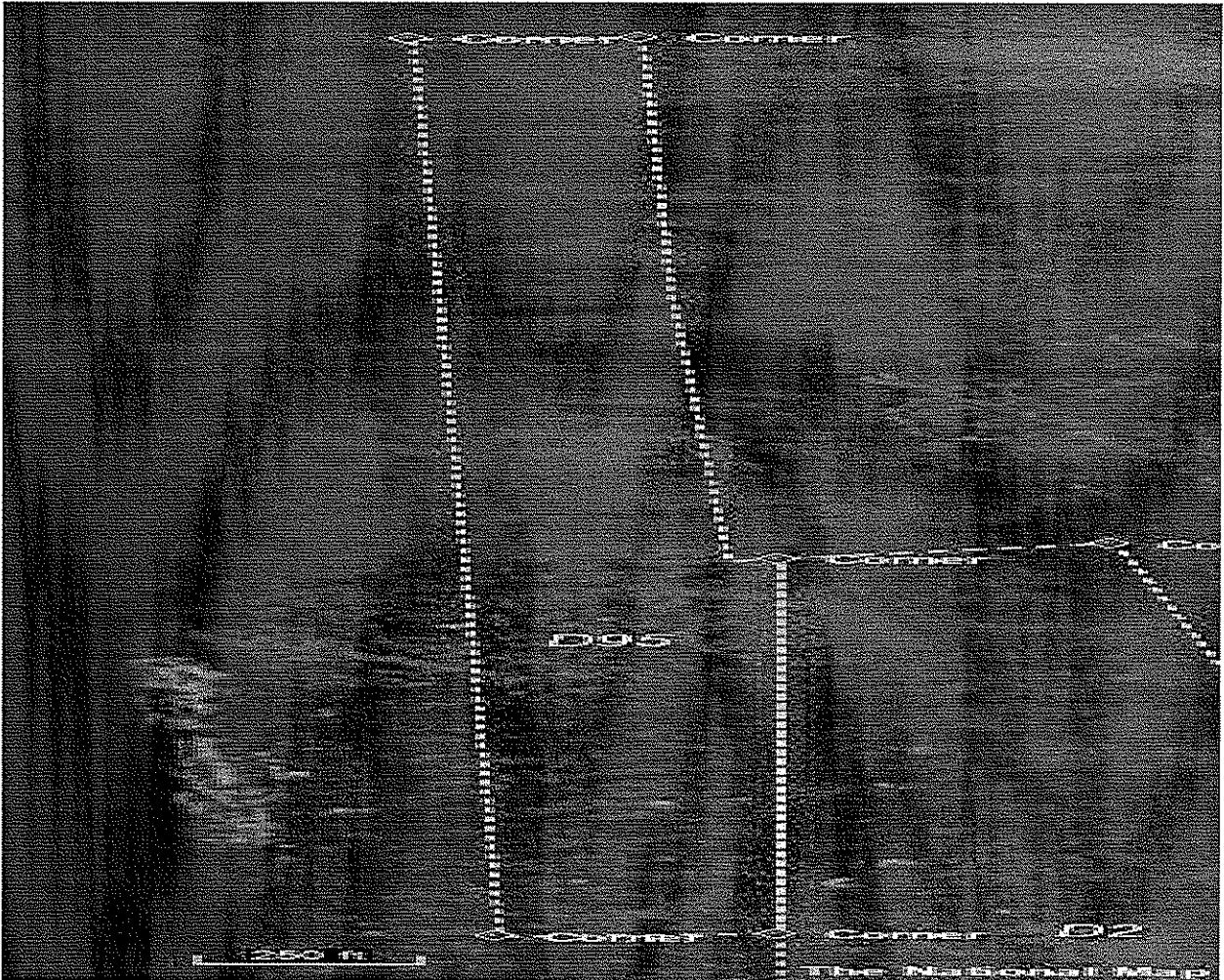


Figure 12. Parcel 79004000095.

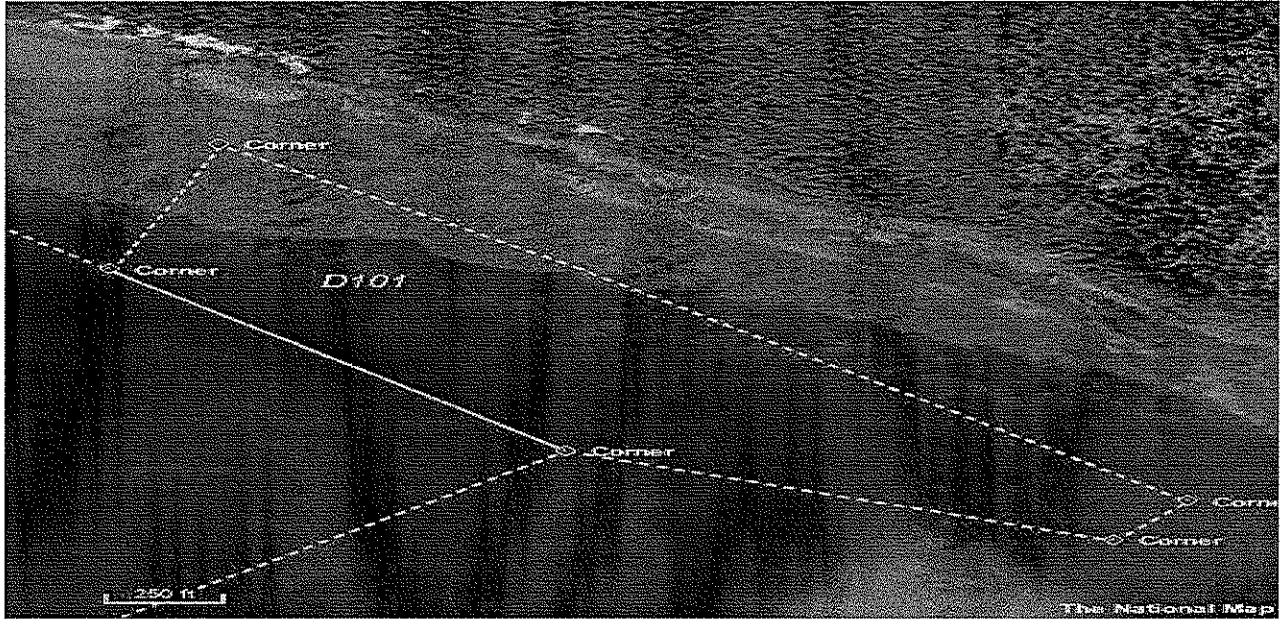


Figure 13. Parcel 79004000101.

Signature Requirements

I certify under penalty of law, that this document and all attachments were prepared under my direction or supervision in accordance with a system designed to assure that qualified personnel properly gathered and evaluated the information submitted. Based on my inquiry of those persons directly responsible for gathering information, the information in the Pretreatment Plan is, to the best of my knowledge and belief, true, accurate, and complete and will be updated as necessary. I am aware that there are significant penalties for submitting false information, including the possibility of fine and imprisonment of knowing violations.

Eric R. Hall

2/25/2015

Signature

Date