



Sprague Lake Hydrology Analysis

Community Kick-Off Meeting

Lincoln County Fire District 1, Sprague Lake, WA

November 22, 2022

AGENDA

- Welcome/Introductions
- Project Overview
- Q&A

Introductions

Ecology

- Brook Beeler
Eastern Region Director
- Karl Rains
Region Planner
- Stephanie May
Communications
- Lynn Schmidt
Flood Engineer
- Patrick Cabbage
Hydrogeologist

Fish & Wildlife

- Steve Pozzanghera
Region 1 Director
- Bruce Heiner
Habitat Engineer

Introductions

Elected Officials

- Representative Tom Dent
District 13
- Representative Joe Schmick
District 9
- Dan Blankenship
Adams Co. Commissioner
- Mark Stedman
Lincoln Co. Commissioner

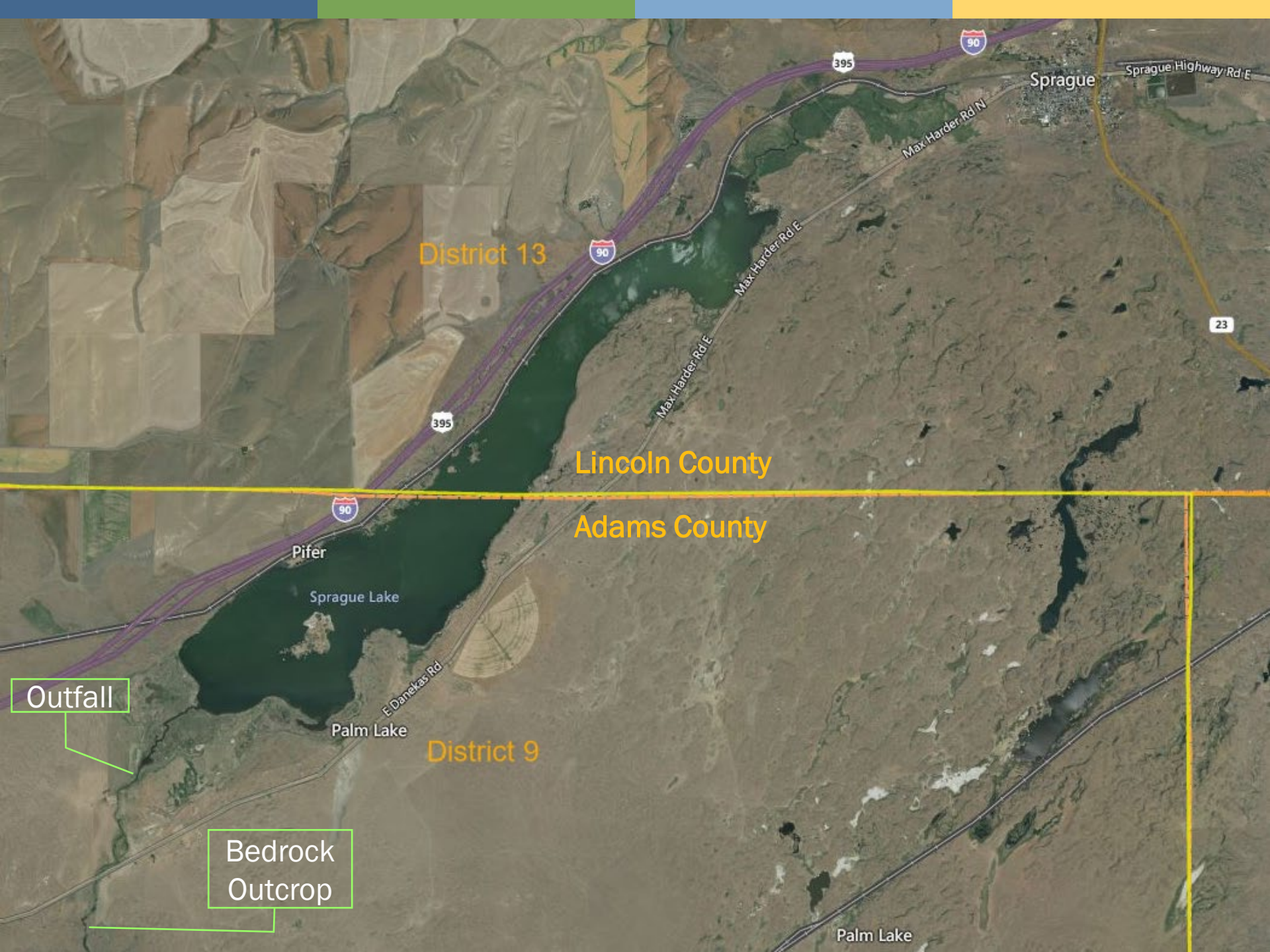
Shannon & Wilson (Consultant)

- Chris Helland
Project Manager &
Floodplain Manager

Project Overview

- Consultant Selection
- Scope of Services
 - Hydraulic Model Development & Calibration
 - Flow Constriction & Bypass Side Channel Analysis
 - Wind driven lake effects assessment





District 13

Lincoln County

Adams County

District 9

Outfall

Bedrock
Outcrop

Sprague

Pifer

Sprague Lake

Palm Lake

Palm Lake

395

90

90

395

23

Sprague Highway Rd E

Max Harder Rd N

Max Harder Rd E

Max Harder Rd E

E Danekas Rd

Q & A





Thank you

Contact Karl Rains at
karl.rains@ecy.wa.gov with
any additional questions



ADA Accessibility

The Department of Ecology is committed to providing people with disabilities access to information and services by meeting or exceeding the requirements of the Americans with Disabilities Act (ADA), Section 504 and 508 of the Rehabilitation Act, and Washington State Policy #188.

To request an ADA accommodation, contact Ecology by phone at 360-407-6831 or email at ecyadacoordinator@ecy.wa.gov. For Washington Relay Service or TTY call 711 or 877-833-6341. Visit [Ecology's website](#) for more information.