

I

**Second Tier Review
Recommendation for:
Vantage Data Center – WA-13
Expansion Project
Quincy, WA**

Air Quality Program

Washington Department of Ecology
Olympia, Washington

Contact Information

Air Quality Program

PO Box 47600
Olympia, WA 98504-7600
360-407-6800
<https://ecology.wa.gov/contact>

ADA Accessibility

The Department of Ecology is committed to providing people with disabilities access to information and services by meeting or exceeding the requirements of the Americans with Disabilities Act (ADA), Section 504 and 508 of the Rehabilitation Act, and Washington State Policy #188.

To request ADA accommodation, email gary.palcisko@ecy.wa.gov or call 360-407-7338, 711 (relay service), or 877-833-6341 (TTY).

**Second Tier Review Recommendation for:
Vantage Data Center – WA-13 Expansion
Project
Quincy, WA**

Air Quality Program
Washington Department of Ecology
Olympia, WA



DEPARTMENT OF
ECOLOGY
State of Washington

This page is purposely left blank

Table of Contents

	<u>Page</u>
List of Tables and Figures	v
Tables	v
Figures	v
Executive Summary	vi
Conclusions	vi
Ecology’s recommendation	vii
Second Tier Review Processing and Approval Criteria	1
Second tier review processing requirements	1
Second tier review approval criteria	1
tBACT determination	2
Health Impact Assessment Review	3
Health effects summary	3
Toxicity reference values	4
Community/receptors	6
Background concentrations of TAPs in ambient air	7
Increased cancer risk	8
Non-cancer hazard	10
Other Considerations	12
Short-term exposures to DEEP	12
Frequency of short-term NO ₂ hazards	12
Uncertainty	14
Exposure uncertainty	14
Emissions uncertainty	14
Air dispersion uncertainty	15
Toxicity uncertainty	15
Conclusions and Recommendation	17
References	19

List of Tables and Figures

Page

Tables

Table 1: Toxicity Values or Comparison Values Considered in Assessing and Quantifying Non-cancer Hazard and Cancer Risk.....	6
Table 2: Estimated Annual Average DEEP and Maximum 1-hr NO ₂ Concentrations at Key Receptor Locations	7
Table 3: Estimated “Background” Concentrations of Average DEEP and 1-hr NO ₂ Levels near Vantage Data Center	8
Table 4: Estimated Increased Cancer Risk for Maximally Impacted Receptors’ Exposure to Vantage’s DEEP Emissions and Background Emissions	9
Table 5: Estimated Short-term NO ₂ Non-cancer Hazards Attributable to Vantage Project-related Emissions (Short-term Line Power Interruption Scenario).....	11
Table 6: Estimated Long-term DEEP Non-cancer Hazards Attributable to Vantage Emissions.....	11
Table 7: Estimated Years between Occurrence of NO ₂ Levels > ASIL from Project-related and Background Emissions Assuming 5 or 8 Hours of Line Power Interruption at Vantage Data Center, Quincy, WA.....	13
Table 8: Qualitative Summary of How Uncertainty Affects the Quantitative Estimate of Risks or Hazards Attributable to Vantage Data Center Proposed Emissions.....	14

Figures

Figure 1: Residential parcels in the area where Vantage’s proposed diesel particle emissions may cause impacts that exceed the ASIL	21
Figure 2: Residential parcels within the area where Vantage’s proposed emissions during a power outage could cause NO ₂ concentrations to exceed the ASIL.....	22
Figure 3: DEEP concentrations attributable to Vantage’s proposed diesel engine emissions and key receptor locations evaluated in the HIA.....	23
Figure 4: Maximum NO ₂ concentrations attributable to Vantage outage emissions and key receptor locations evaluated in the HIA.....	24
Figure 5: Recurrence interval (years) with which NO ₂ concentrations attributable to Vantage outage emissions could exceed the ASIL and key receptor locations evaluated in the HIA.....	25

Executive Summary

This document presents and summarizes a review of health risks from air pollutants emitted by 44 new emergency diesel-powered generators and 12 diesel-powered generators at Vantage Data Center in Quincy, WA. In general, toxic air pollutant impacts in the area near Vantage Data Center will not result in excessive cancer risk or cause serious short- or long-term health effects. Ecology concludes that the health risk is acceptable and recommends approval of the project.

Vantage proposes to expand their existing data center in Quincy, WA. The expansion will include:

- Forty four (44) 2.75 megawatt diesel-fueled emergency generators to supply backup power to a new data center building (WA-13)
 - These engines will be certified to meet EPA tier 2 emission limits plus they will be equipped with additional controls consisting of catalyzed diesel particulate filters and selective catalytic reduction.
- Increased emission limits for 12 existing diesel-fueled generators at building WA-12.
 - These engines consist of ten (10) 2.75 megawatt diesel-fueled emergency generators and two (2) 0.5 megawatt diesel-fueled emergency generators. Each engine is certified to meet EPA tier 2 emission limits
 - Vantage requestes additional permit flexibility for these engines. They have considered these engines as new sources for the purpose of determining increases in emissions and ambient impacts.

While the proposed engines will only operate up to 84 hours per year during unplanned outages and for planned maintenance and testing (per engine average not including stack testing or one time commissioning), the engines may emit two toxic air pollutants—diesel engine exhaust particles and nitrogen dioxide—at rates triggering a requirement to prepare a health impact assessment. A health impact assessment describes the increased health risks from exposure to toxic air pollutants.

Vantage hired Landau Associates to prepare a health impact assessment. Landau Associates estimated increased health risks associated with Vantage's proposed diesel particle, nitrogen dioxide and other toxic air pollutant emissions.

Conclusions

- Long-term impacts:
 - Vantage's increased diesel particle emissions result in a maximum lifetime cancer risk of about 9.7 in one million. The maximum risk occurs for tenant workers at Vantage Data Center. Ecology assumes workers are exposed to Vantage's increased emissions eight hours per day, five days per week, for 40 years when assessing increased lifetime cancer risk.

- The maximum increased cancer risk for residents near Vantage Data Center is about 5.6 per million. Ecology assumes continuous lifetime exposure to Vantage's increased emissions when assessing residents' increased cancer risk.
- Lifetime exposure to "background" levels of diesel particles in the area results in a risk of about 36 in one million.
- Exposure to diesel particles in the area is not likely to result in long-term non-cancer health effects.
- Short-term impacts:
 - Nitrogen dioxide emitted from Vantage Data Center's diesel-powered generators during a power outage could rise to levels of short-term concern for people with respiratory problems.
 - The highest short-term nitrogen dioxide impacts occur near the east side of the Vantage Data Center's fence line boundary. The wind and weather conditions conducive to producing higher nitrogen dioxide impacts need to coincide with high emissions during power outages to result in high concentrations. We do not expect power outages affecting Vantage Data Center to occur frequently, therefore concentrations responsible for these hazards probably will not occur frequently or last long.
 - Intermittent outage emissions from Vantage's emergency engines probably will not cause frequent or sustained NO₂ levels of concern at most residential or other routinely occupied areas near Vantage Data Center.

Ecology's recommendation

Ecology recommends approval of the project because:

- Emission controls for the new and modified emission units represent best available control technology for toxics.
- The applicant demonstrated that the increase in emissions of toxic air pollutants is not likely to result in an increased cancer risk of more than one in one hundred thousand (10 in one million) which is the maximum risk allowed by a second tier review.
- The non-cancer hazard is acceptable.
- Grant County PUD power system is reliable.

Second Tier Review Processing and Approval Criteria

Landau Associates submitted the health impacts assessment (HIA) of Vantage's proposed emissions (Landau Associates, 2022). The HIA is part of the second tier toxics review process under WAC 173-460. Ecology is responsible for processing and reviewing second tier review petitions statewide.

Second tier review processing requirements

In order for Ecology to review the second tier petition, each of the following regulatory requirements under Chapter 173-460-090 must be satisfied:

- (a) The permitting authority has determined that other conditions for processing the Notice of Construction Order of Approval (NOC) have been met, and has issued a preliminary approval order.
- (b) Emission controls contained in the preliminary NOC approval order represent at least best available control technology for toxics (tBACT).
- (c) The applicant has developed an HIA protocol that has been approved by Ecology.
- (d) The ambient impact of the emissions increases of each toxic air pollutant (TAP) that exceed acceptable source impact levels (ASILs) has been quantified using refined air dispersion modeling techniques as approved in the HIA protocol.
- (e) The second tier review petition contains an HIA conducted in accordance with the approved HIA protocol.

Acting as the "permitting authority" for this project, Ecology's project permit engineer satisfied item (a) and verified item (b) above on April 6, 2022.¹ Ecology approved an HIA protocol (item (c)), and the final HIA (item (e)) was received by Ecology on March 24, 2022. Ecology's modeler determined that Landau Associates conducted the refined modeling (item (d)) appropriately.²

All five processing requirements above are satisfied.

Second tier review approval criteria

As specified in WAC 173-460-090(7), Ecology may recommend approval of a project that is likely to cause an exceedance of ASILs for one or more TAPs only if it:

¹ Andrew Kruse, "Updated PD for Vantage," email message with attachment, April 6, 2022.

² Tesfamichael Ghidey, "RE: Vantage Data Centers NOC Application and HIA Report," email message, April 11, 2022.

- (a) Determines that the emission controls for the new and modified emission units represent tBACT.
- (b) The applicant demonstrates that the increase in emissions of TAPs is not likely to result in an increased cancer risk of more than one in one hundred thousand.
- (c) Ecology determines that the non-cancer hazard is acceptable.

tBACT determination

Ecology's permit engineer determined that Vantage's proposed pollution control equipment satisfies the BACT and tBACT requirement for diesel engines powering backup generators (Ecology, 2022). BACT and tBACT for nitrogen oxides (NO_x) and diesel particles was determined to be met through restricted operation of EPA Tier-2 certified engines operated as emergency engines as defined in 40 C.F.R. 60.4219, and compliance with the operation and maintenance restrictions of 40 C.F.R. Part 60, Subpart III.

- The 12 existing engines at Building WA-12 are certified to meet EPA Tier-2 emission standards.
- The 44 proposed engines at Building WA-13 must be certified to meet EPA Tier-2 emission standards. Additionally, Vantage proposes to install add-on particulate and nitrogen oxide controls consisting of catalyzed diesel particulate filters and selective catalytic reduction further reducing emissions.

Health Impact Assessment Review

As described above, the applicant is responsible for preparing the HIA under WAC 173-460-090. Ecology's project team consisting of an engineer, a toxicologist, and a modeler review the HIA to determine if the methods and assumptions are appropriate for assessing and quantifying risks to the surrounding community from a new project.

For the Vantage Data Center WA-13 expansion project, the HIA focused on health risks attributable to diesel engine exhaust particulate (DEEP) and nitrogen dioxide (NO₂) exposure because the modeled ambient air concentrations exceeded respective ASILs. Landau Associates briefly described emissions and exposure to other project-related TAPs that did not exceed ASILs, but these pollutants contributed very little to overall health risks estimated in the health impacts assessment.

Health effects summary

The HIA prepared by Landau Associates quantifies the non-cancer hazards and increased cancer risks attributable to Vantage's TAP emissions. The HIA focused on potential exposure to diesel particles and NO₂ as these were the two TAPs with emissions causing an exceedance of an ASIL.

DEEP health effects summary

Diesel engines emit very small fine (<2.5 micrometers [μm]) and ultrafine (<0.1 μm) particles. These particles can easily enter deep into the lung when inhaled. Mounting evidence indicates that inhaling fine particles can cause or contribute to numerous adverse health effects.

Studies of humans and animals specifically exposed to DEEP show that diesel particles can cause both acute and chronic health effects including cancer. Ecology has summarized these health effects in "Concerns about Adverse Health Effects of Diesel Engine Emissions" (Ecology, 2008).

Nitrogen dioxide health effects summary

NO₂ is present in diesel exhaust. It forms when nitrogen, present in diesel fuel and as a major component of air, combines with oxygen to produce oxides of nitrogen.

NO₂ and other oxides of nitrogen are of concern for ambient air quality because they are part of a complex chain of reactions responsible for the formation of ground-level ozone. Additionally, exposure to NO₂ can cause both long-term (chronic) and short-term (acute) health effects.

Long-term exposure to NO₂ can lead to chronic respiratory illness such as bronchitis and increase the frequency of respiratory illness due to respiratory infections.

Short-term exposure to extremely high concentrations ($>180,000 \mu\text{g}/\text{m}^3$) of NO_2 may result in serious effects including death (National Research Council, 2012). Moderate levels ($\sim 30,000 \mu\text{g}/\text{m}^3$) may severely irritate the eyes, nose, throat, and respiratory tract, and cause shortness of breath and extreme discomfort. Lower level NO_2 exposure ($<1,000 \mu\text{g}/\text{m}^3$), such as that experienced near major roadways, or perhaps downwind from stationary sources of NO_2 , may cause increased bronchial reactivity in some asthmatics, decreased lung function in patients with chronic obstructive pulmonary disease, and increased risk of respiratory infections, especially in young children (CalEPA, 2008).

For Vantage's proposed project, emissions from emergency engines during a utility power interruption present the greatest potential for producing high enough short-term concentrations of NO_2 to be of concern for respiratory health effects. Landau Associates and Ecology calculated numerical estimates of exposure and hazard reported later in this document.

Toxicity reference values

Agencies develop toxicity reference values for use in evaluating and characterizing exposures to chemicals in the environment. As part of the HIA, Landau Associates identified appropriate toxicity values for DEEP and NO_2 .

DEEP toxicity values

Landau identified toxicity values for DEEP from two agencies: the U.S. Environmental Protection Agency (EPA) (EPA, 2002; EPA, 2003), and California EPA's Office of Environmental Health Hazard Assessment (OEHHA) (CalEPA, 1998). These agencies derived toxicity values from studies of animals exposed to a known amount (concentration) of DEEP, or from epidemiological studies of exposed humans. These values represent a level at or below which we do not expect adverse non-cancer health effects and a metric by which to quantify increased risk from exposure to a carcinogen. Table 1 shows the appropriate DEEP non-cancer and cancer toxicity values identified by Landau Associates.

EPA based its reference concentration (RfC) and OEHHA based its reference exposure level (REL) for diesel engine exhaust (measured as DEEP) using dose-response data on inflammation and changes in the lung from rat inhalation studies. Each agency established a level of five $\mu\text{g}/\text{m}^3$ as the concentration of DEEP in air at which long-term exposure is unlikely to cause adverse non-cancer health effects.

EPA promulgated National Ambient Air Quality Standards (NAAQS) and other regulatory toxicological values for short- and intermediate-term exposure to particulate matter, but values specifically for DEEP exposure at these intervals do not currently exist.

OEHHA derived a unit risk factor (URF) for estimating cancer risk from exposure to DEEP. They based the URF on a meta-analysis of several epidemiological studies of humans occupationally exposed to DEEP. In these studies, researchers based exposure on measurements of elemental carbon and respirable particulate representing fresh diesel exhaust. Therefore, we define DEEP as the filterable fraction of particulate emitted by diesel engines.³ The URF is expressed as the upper-bound probability of developing cancer, assuming continuous lifetime exposure to a substance at a concentration of one microgram per cubic meter ($1 \mu\text{g}/\text{m}^3$), and are expressed in units of inverse concentration [i.e., $(\mu\text{g}/\text{m}^3)^{-1}$]. OEHHA's URF for DEEP is 0.0003 per $\mu\text{g}/\text{m}^3$ meaning that a lifetime of exposure to one $\mu\text{g}/\text{m}^3$ of DEEP results in an increased individual cancer risk of 0.03 percent or a population cancer risk of 300 excess cancer cases per million people exposed.

Nitrogen dioxide toxicity values

OEHHA developed an acute reference exposure level for NO_2 based on inhalation studies of asthmatics exposed to NO_2 . These studies found that some asthmatics exposed to about 0.25 ppm ($470 \mu\text{g}/\text{m}^3$) experienced increased airway reactivity following inhalation exposure to NO_2 (CalEPA, 2008). Not all exposed subjects experienced an effect.

The acute REL derived for NO_2 does not contain any uncertainty factor adjustment, and therefore does not provide any additional buffer between the derived value and the exposure concentration at which effects may occur in sensitive populations. This implies that exposure to NO_2 at levels equivalent to the acute REL (which is also the same as Ecology's ASIL) could result in increased airway reactivity in a subset of asthmatics. People without asthma or other respiratory disease are less likely to experience effects at NO_2 levels at or below the REL. OEHHA intended for acute RELs to be "for infrequent one hour exposures that occur no more than once every two weeks in a given year" (CalEPA, 2015).

Acute Exposure Guidance Levels (AEGLs) developed by the National Research Council (NRC) are also relevant to acute NO_2 exposures. Emergency planners and responders use AEGLs as guidance in dealing with rare releases of chemicals into the air. AEGLs are expressed as specific concentrations of airborne chemicals at which health effects, ranging from non-disabling to severe, may occur. The varying AEGL levels (1, 2, or 3) are dictated by the severity of the toxic effects caused by the exposure, with Level 1 being the least and Level 3 being the most severe. They are designed to protect the elderly and children, and other individuals who may be susceptible. The AEGL1 (non-disabling effects) for NO_2 is $940 \mu\text{g}/\text{m}^3$. Potential effects include slight burning of the

³ Condensable particulate does not represent DEEP for the purposes assessing health risks from DEEP exposure; however, we consider both the filterable and condensable fractions of particulate when determining compliance with NAAQS for the purposes of the NOC application.

eyes, headache, and chest tightness or labored breathing with exercise in people with asthma.

Finally, EPA developed an annual and 1-hour NAAQS for NO₂.⁴ Landau Associated demonstrated compliance with these NAAQS as part of the NOC application process (Ecology, 2022).

Table 1: Toxicity Values or Comparison Values Considered in Assessing and Quantifying Non-cancer Hazard and Cancer Risk

Pollutant	Agency	Non-cancer	Cancer
DEEP	U.S. Environmental Protection Agency	RfC ¹ = 5 µg/m ³	NA ²
DEEP	California EPA–Office of Environmental Health Hazard Assessment	Chronic REL ³ = 5 µg/m ³	URF ⁴ = 0.0003 per µg/m ³
Nitrogen dioxide	California EPA–Office of Environmental Health Hazard Assessment	Acute REL = 470 µg/m ³	NA
Nitrogen dioxide	National Research Council – Committee on Acute Exposure Guideline Levels.	AEGL ⁵ – 1 = 940 µg/m ³	NA
¹ RfC – Reference Concentration ² EPA considers DEEP to be a probable human carcinogen, but has not established a cancer slope factor or unit risk factor. ³ REL – Reference Exposure Level ⁴ URF – Unit Risk Factor ⁵ AEGL – Acute Exposure Guidance Level			

Community/receptors

Vantage Data Center is located in an industrially zoned area surrounded largely by agricultural land uses. Some rural residences are scattered around the facility with the nearest residential parcel adjacent to the facility’s southwest property boundary. Air dispersion modeling indicated that proposed DEEP emissions result in long-term concentrations in excess of the ASIL at about 15 parcels with residential land use codes (Figure 1) [Ecology, 2019]. Relevant to short-term impacts, levels of NO₂ could exceed the ASIL at about two parcels with residential land use codes (Figure 2).

For the purposes of assessing increased cancer risk and non-cancer hazards, Landau Associates identified receptor locations where the highest exposure to project-related air pollutants could occur: at or near the project fenceline boundary, nearby residences, and on-site building tenant locations (Table 2, Figures 3 and 4). Landau Associates also evaluated exposures that occur at area schools and health care centers. None of

⁴ Annual NAAQS = 100 µg/m³ (Annual average concentration); 1-hr NAAQS = 188 µg/m³ (98th percentile of 1-hour daily maximum concentrations, averaged over 3 years)

these other sensitive receptors is located in areas where Vantage’s ambient impacts exceed ASILs.

Ecology’s review of the HIA found that Landau Associates identified appropriate receptors to capture the highest Vantage project-attributable exposures for commercial, residential, and other sensitive receptors.

Table 2: Estimated Annual Average DEEP and Maximum 1-hr NO₂ Concentrations at Key Receptor Locations

Receptor	UTM Coordinates Zone 11N	Annual DEEP Concentration (µg/m ³)	UTM Coordinates Zone 11N	Maximum 1-hr NO ₂ Concentration (µg/m ³)
MIRR	(286911, 5236745)	0.0186	(286935, 5236703)	796
MICR (onsite receptor)	(287107.3, 5237183)	0.248	(287042.8, 5237188)	1241
MIBR / PMI	(287265, 5237192)	0.260	(287218, 5236950)	1249
MIRR – Maximally impacted residential receptor MICR – Maximally impacted commercial receptor MIBR / PMI – Maximally impacted boundary receptor / Point of Maximum Impact				

Background concentrations of TAPs in ambient air

When reviewing increases in TAP emissions under second tier review, WAC 173-460-090 specifies that:

Background concentrations of TAPs will be considered as part of a second tier review. Background concentrations can be estimated using:

- The latest National Ambient Toxics Assessment data for the appropriate census tracts; or
- Ambient monitoring data for the project’s location; or
- Modeling of emissions of the TAPs subject to second tier review from all stationary sources within 1.5 kilometers of the source location.

Landau Associates used the Quincy-wide interactive background map available on Ecology’s website.⁵ This map presents gridded annual average diesel particulate and the 98th percentile of the daily maximum one-hour NO₂ levels attributable to regional

⁵ Quincy DPM and NO₂ analyses: available at <https://ecology.wa.gov/Air-Climate/Air-quality/Data-Centers>.

and local sources. Table 3 shows the background levels of DEEP and NO₂ considered by Landau Associates in the HIA.

Table 3: Estimated “Background” Concentrations of Average DEEP and 1-hr NO₂ Levels near Vantage Data Center

Receptor	Average Annual “Background” Diesel Particulate Concentration (µg/m ³)	1-hr NO ₂ “Background” Concentration (µg/m ³)
MIBR/MICR	0.11	36
MIRR	0.12	42

Increased cancer risk

Landau Associates assessed the increased risk of cancer from lifetime exposure to DEEP emitted from Vantage’s engines. They characterized cancer risk in a manner consistent with EPA guidance for inhalation risk assessment (EPA, 2009) using the following equations:

Risk = IUR x EC

Where:

IUR (µg/m³)⁻¹ = inhalation unit risk (i.e., unit risk factor); and

EC (µg/m³) = exposure concentration

EC = (CA x ET x EF x ED)/AT

Where:

EC (EC (µg/m³) = exposure concentration;

CA (µg/m³) = contaminant concentration in air;

ET (hours/day) = exposure time;

EF (days/year) = exposure frequency;

ED (years) = exposure duration; and

AT (70 years x 365 days/year x 24 hours/day) = averaging time

Cancer risk attributable to Vantage DEEP and existing background emissions

Table 4, adapted from the HIA, shows the estimated Vantage project-related cancer risk per million for residential and commercial receptors. These receptors received the highest exposure to Vantage-related diesel emissions. Figure 3 shows the location of these receptors relative to Vantage. The highest increase in risks attributable to Vantage’s project-related emissions is 9.7 per million⁶ for tenant workers at Vantage Data Center.

For residential exposure scenarios, the maximally impacted residential receptor (MIRR) may have increased risks of up to 5.7 per million. Exposure to existing “background” levels of DEEP in the same area results in a risk of about 36 in one million.

Table 4: Estimated Increased Cancer Risk for Maximally Impacted Receptors’ Exposure to Vantage’s DEEP Emissions and Background Emissions

Exposure Parameter	MIRR	MICR	MIBR
CA Vantage project – concentration in air from Vantage project emissions ($\mu\text{g}/\text{m}^3$)	0.019	0.248	0.260
CA background – concentration in air from "background" sources ($\mu\text{g}/\text{m}^3$)	0.12	0.11	0.11
ET - Exposure Time (hours per day)	24	8	2
EF - Exposure Frequency (days per year)	365	250	250
ED - Exposure Duration (years)	70	40	30
AT - Averaging Time (hours)	613200	613200	613200
EC Vantage project – Vantage project-related Exposure Concentration ($\mu\text{g}/\text{m}^3$)	0.0190	0.0324	0.0064
EC background - Background Exposure Concentration ($\mu\text{g}/\text{m}^3$)	0.11	0.014	0.003
IUR - Inhalation Unit Risk ($\mu\text{g}/\text{m}^3$)-1	3.00E-04	3.00E-04	3.00E-04
Increased cancer risk from Vantage project emissions	5.7E-06	9.7E-06	1.9E-06
Cancer risk from “background” sources	3.6E-05	4.3E-06	8.1E-07
Total cancer risk from diesel particle exposures near Vantage	4.2E-05	1.4E-05	2.7E-06
Note: Landau Associates also evaluated exposures for other sensitive receptors, but we did not present them because the exposure and risk levels are much lower than those in this table are.			

⁶ Number per million represents an upper-bound theoretical estimate of the number of excess cancers that might result in an exposed population of one million people compared to an unexposed population of one million people. Alternatively, an individual’s increase in risk of one in one million means a person’s chance of getting cancer in their lifetime increases by one in one-million or 0.0001 percent.

Non-cancer hazard

Landau Associates assessed the acute and chronic non-cancer hazards from exposure to NO₂ and DEEP emissions from Vantage and other local sources. They estimated non-cancer hazards consistent with EPA guidance for inhalation risk assessment (EPA, 2009) using the following equations:

HQ = EC/Toxicity Value

Where:

HQ (unitless) = hazard quotient;

EC (µg/m³) = exposure concentration;

Toxicity Value (µg/m³) = inhalation toxicity value (e.g., RfC, REL) that is appropriate for the exposure scenario (acute, subchronic, or chronic).

EC = CA

Where:

EC (µg/m³) = exposure concentration;⁷

CA (µg/m³) = contaminant concentration in air.

Landau Associates evaluated short-term (acute) exposures to NO₂ emitted during power outage scenarios and determined hazard quotients (HQs) could exceed unity (one) at a few locations (Table 5, Figure 4). This indicates that there is potential for short-term respiratory hazards from exposure to NO₂. We present and discuss the frequency of these potential occurrences under the “Other Considerations” heading of this document.

⁷ EPA’s guidance allows consideration of exposure frequency and exposure duration when determining exposure concentrations for chronic health effects, but for simplicity, Landau Associates assumed all receptors experience continuous exposure to the average annual contaminant concentration in air at the relevant receptor locations.

Table 5: Estimated Short-term NO₂ Non-cancer Hazards Attributable to Vantage Project-related Emissions (Short-term Line Power Interruption Scenario)

Receptor	Project-related Max 1-hr NO ₂ Level (µg/m ³)	Existing Background NO ₂ Level (µg/m ³)	Cumulative Max 1-hr NO ₂ Level (µg/m ³)	Acute REL (µg/m ³)	HQ
MIBR/PMI MICR	1249	36	1285	470	2.7
MICR	1241	36	1277	470	2.7
MIRR	796	42	838	470	1.8
MIRR – Maximally impacted residential receptor MICR – Maximally impacted commercial receptor MIBR/PMI – Maximally impacted boundary receptor/Point of maximum impact					

Landau Associates also evaluated chronic non-cancer hazard associated with long-term exposure to DEEP emitted from Vantage’s emergency engines. Long-term exposure to DEEP in the area results in HQs much lower than unity (Table 6). Additionally, HQs would remain low even when considering “background” exposures. This indicates that long-term exposure to DEEP near Vantage Data Center is not likely to pose long-term non-cancer health hazards.

Table 6: Estimated Long-term DEEP Non-cancer Hazards Attributable to Vantage Emissions

Receptor	Project-related Annual Avg. DEEP Level (µg/m ³)	Existing Background DEEP Level (µg/m ³)	Cumulative Avg. DEEP Level (µg/m ³)	Chronic REL (µg/m ³)	HQ
MIBR	0.260	0.11	0.371	5	<0.1
MICR	0.248	0.11	0.359	5	<0.1
MIRR	0.019	0.12	0.139	5	<0.1
MIRR – Maximally impacted residential receptor MICR – Maximally impacted commercial receptor MIBR – Maximally impacted boundary receptor					

Other Considerations

Short-term exposures to DEEP

Exposure to DEEP can cause both acute and chronic health effects. However, as discussed previously, reference toxicity values specifically for DEEP exposure at short-term or intermediate intervals do not currently exist. Therefore, Landau Associates did not quantify short-term risks or hazards from DEEP exposure. Generally, Ecology assumes that compliance with the 24-hour PM_{2.5} NAAQS indicates acceptable short-term health effects from DEEP exposure. Ecology's Technical Support Document (TSD) for the draft preliminary NOC approval concludes that we do not expect Vantage's emissions to cause or contribute to an exceedance of any NAAQS (Ecology, 2022).

Frequency of short-term NO₂ hazards

Vantage's emergency engines could emit a high rate of NO_x if required to supply power during a line power interruption. Generally, line power is reliable in Quincy as the public utilities district (PUD) reports⁸ an average service availability index (SAI) of greater than 99.98 percent, which equates to less than two hours of interrupted service per average customer per year. Additionally, the highest system average interruption frequency index (SAIFI) from 2016 through 2020 was 0.916, which means that the average customer experienced about one power disruption per year. The highest customer average interruption duration index (CAIDI) during that same period was 167.95 minutes,⁹ which means that when a power interruption does occur, it lasts an average of about 2 hours and 48 minutes.

As previously described, Landau Associates evaluated short-term Vantage and background NO_x emissions as part of the second tier review. The analysis showed that while NO₂ levels could indeed rise to levels of concern¹⁰ during a line power interruption, the interruption would have to occur at a time when the dispersion conditions were optimal for concentrating NO₂ at a given location.

Landau Associates estimated the combined probability of Vantage Data Center experiencing a power outage that coincides with unfavorable meteorology. Table 7 shows the recurrence interval of concentrations exceeding the ASIL (470 µg/m³) at key

⁸ Based on reported service reliability from 2018 to 2020. This is consistent with previously reported statistics from 2007 through 2019.

⁹ Mark Brunner, "RE: Vantage Data Centers NOC Application and HIA Report," email from Mark Brunner, Landau Associates, Inc., to Gary Palcisko, Washington State Department of Ecology; Andrew Kruse, Washington State Department of Ecology; Amy Maule, Landau Associates, Inc., February 25, 2022.

¹⁰ The level of concern in this case is 470 µg/m³. This represents California OEHHA's acute reference exposure level of 470 µg/m³.

receptor locations resulting from Vantage project-related power outage NO_x emissions added to “background” NO₂ levels. Assuming the data center experiences five hours of line power interruption every year, which is double the PUD reported system-wide average interruption duration from 2018 to 2020, short-term (1-hr) NO₂ impacts could reach levels of concern occur along the eastern boundary of Vantage Data Center about once every 1.5 years (Figure 5). NO_x emissions may cause an ASIL exceedance at the most frequently impacted residential location about once every 69 years.

Table 7: Estimated Years between Occurrence of NO₂ Levels > ASIL from Project-related and Background Emissions Assuming 5 or 8 Hours of Line Power Interruption at Vantage Data Center, Quincy, WA

Hypothetical Average Annual Number of Hours per Year Vantage Experiences Line Power Interruption (hr/yr)	Recurrence (yr) of NO ₂ Levels > ASIL at Most Frequently Impacted Residence		Recurrence (yr) of NO ₂ Levels > ASIL at Most Frequently Impacted Receptor Along eastern Vantage Data Center Boundary	
	Project-related Outage Emissions Only	Project-related Emissions and Background	Project-related Outage Emissions Only	Project-related Emissions and Background
5	126	69	1.5	1.5
8	78	43	1.2	1.2

Notes:

- Recurrence interval in years of Vantage project-related ambient impacts exceeding 440 µg/m³, which equates to an assumed background of 30 µg/m³ (which is the 98th percentile concentration obtained from Ecology’s storymap at a location near the WA-12 building and proposed WA-13 building on Vantage Data Center’s property).
- Unplanned line-power interruptions appear to occur less frequently than the average Grant County PUD customer (Landau Associates, 2018)

Uncertainty

Many factors of the HIA are prone to uncertainty. Uncertainty relates to the lack of exact knowledge regarding many of the assumptions used to estimate the human health impacts of Vantage’s emissions. The assumptions used in the face of uncertainty may tend to over- or underestimate the health risks estimated in the HIA. Key aspects of uncertainty in the HIA for Vantage’s proposed expansion are exposure assumptions, emissions estimates, air dispersion modeling, and toxicity of DEEP.

Table 8: Qualitative Summary of How Uncertainty Affects the Quantitative Estimate of Risks or Hazards Attributable to Vantage Data Center Proposed Emissions

Source of Uncertainty	How Does it Affect Estimated Risk from this Project?
Exposure assumptions	Continuous lifetime exposure is likely an overestimate of DEEP exposure.
Emissions estimates	Possible overestimate of emissions because Landau used worst-case load to estimate impacts of DEEP and NO ₂ emissions.
Air modeling methods	Possible underestimate of average long-term ambient concentrations and overestimate of short-term ambient concentration.
Toxicity of DEEP at low concentrations	Possible overestimate of cancer risk, possible underestimate of non-cancer hazard for sensitive individuals.

Exposure uncertainty

We can only estimate the amount of time people will be exposed to Vantage’s DEEP emissions. To ensure public health protection, Landau Associates and Ecology assumed a residential receptor is at one location for 24 hours per day, 365 days per year for 70 years. These assumptions tend to overestimate an individual’s exposure and risk.

Emissions uncertainty

The exact amount of DEEP and NO_x emitted from Vantage’s diesel-powered generators is uncertain. Landau Associates assumed engines only operate at loads that produce the highest ambient impacts, and that engines operate for the full extent of hours allowed in the draft permit. In reality, the engines will operate at a variety of loads in which emissions may be lower (or cause lower impacts) than assumed, and Vantage will probably use the engines less frequently than allowed in the draft permit. Landau Associates also attempted to account for higher emissions that would occur during initial start-up. We consider the resulting values an appropriately conservative estimate of DEEP and NO_x emissions for the purposes of the ambient impact analysis.

Forecasting the amount of time Vantage uses their data center engines under emergency conditions is also uncertain. While we cannot predict future outages, Grant County PUD reports a stable power supply, so we do not anticipate frequent use of these engines during unplanned power interruptions.¹¹

Air dispersion uncertainty

The transport of pollutants through the air is a complex process. Agencies develop regulatory air dispersion models to estimate the transport and dispersion of pollutants as they travel through the air. They update and improve these models after developing techniques that are more accurate. Generally, agencies develop these models to avoid underestimating the modeled impacts. Even if we confidently know all of the numerous input parameters to an air dispersion model, random effects found in the real atmosphere will introduce uncertainty. Typical of the class of modern steady-state Gaussian dispersion models, the AERMOD model used for the Vantage Data Center project analysis may slightly overestimate the short-term (1-hour average) impacts and somewhat underestimate the annual concentrations.

Toxicity uncertainty

One of the largest sources of uncertainty in any risk evaluation is associated with the scientific community's limited understanding of the toxicity of most chemicals in humans following exposure to the low concentrations generally encountered in the environment. To account for uncertainty when developing toxicity values (e.g., RfCs), EPA and other agencies apply "uncertainty" factors to observed doses or concentrations that cause adverse non-cancer effects in animals or humans. Agencies apply these uncertainty factors so that they derive a toxicity value considered protective of humans including susceptible populations. In the case of DEEP exposure, EPA and OEHHA derived non-cancer reference values used in this assessment from animal studies. These reference values are probably protective of the majority of the population including sensitive individuals, but in the case of EPA's DEEP RfC, EPA acknowledges (EPA, 2002):

“...the actual spectrum of the population that may have a greater susceptibility to diesel exhaust (DE) is unknown and cannot be better characterized until more information is available regarding the adverse effects of diesel particulate matter (DPM) in humans.”

Quantifying DEEP cancer risk is also uncertain. Although EPA classifies DEEP as probably carcinogenic to humans, they have not established a URF for quantifying cancer risk. In their health assessment document, EPA determined that “human exposure-response data are too uncertain to derive a confident quantitative estimate of cancer unit risk based on existing studies.” However, EPA suggested that a URF based

¹¹ Grant County PUD reports an average service availability index (ASAI) of greater than 99.98 percent, which equates to less than two hours of interrupted service per average customer per year.

on existing DEEP toxicity studies would range from 1×10^{-5} to 1×10^{-3} per $\mu\text{g}/\text{m}^3$. OEHHA's DEEP URF (3×10^{-4} per $\mu\text{g}/\text{m}^3$) falls within this range. Regarding the range of URFs, EPA states in their health assessment document for diesel exhaust (EPA, 2002):

“Lower risks are possible and one cannot rule out zero risk. The risks could be zero because (a) some individuals within the population may have a high tolerance to exposure from [diesel exhaust] and therefore not be susceptible to the cancer risk from environmental exposure, and (b) although evidence of this has not been seen, there could be a threshold of exposure below which there is no cancer risk.”

Other sources of uncertainty cited in EPA's health assessment document for diesel exhaust are:

- Lack of knowledge about the underlying mechanisms of DEEP toxicity.
- The question of whether toxicity studies of DEEP based on older engines are relevant to current diesel engines.

Regarding the second bullet above, California EPA's Office of Environmental Health Hazard Assessment evaluated experimental data from several new technology diesel engine emissions reflecting emission controls similar to those proposed for Vantage's WA-13 expansion engines (CalEPA, 2012).

“These studies indicate that the reductions of some air toxics such as polycyclic aromatic hydrocarbons, benzene and 1,3-butadiene in new technology engine exhaust (often 80 – 90%) are not as great as the corresponding reductions in DEP [diesel engine particulate] (often 95 – 99%). The resulting air toxics/DEP ratios for NTE [new technology engine] exhaust may be greater than or equal to similar ratios found in exhaust from older diesel engines. As an example, an analysis of data from one published review indicated that the average 3-ring PAH, 1,3-butadiene and benzene/DEP ratios increased in NTE exhaust compared to older DEE [diesel engine emissions] by 2-, 10- and 4-fold, respectively. These data suggest that while the absolute amount of DEP (and thus estimated cancer risk) and air toxics is much reduced in NTE exhaust, the exhaust composition has not necessarily become less hazardous. Thus, the available data do not indicate that NTE exhaust should be considered to be fundamentally different in kind compared to older DEE for risk assessment purposes and suggests the TAC cancer unit risk value for DEP can continue to be applied to NTE exhaust risk assessments.”

Conclusions and Recommendation

The project review team has reviewed the HIA and determined that:

- (a) The TAP emissions estimates presented by Landau Associates represent a reasonable estimate of the project's future emissions.
- (b) Emission controls for the new and modified emission units meet the tBACT requirement.
- (c) The ambient impact of the emissions increases of each TAP that exceeds ASILs has been quantified using appropriate refined air dispersion modeling techniques.
- (d) The HIA submitted by Landau Associates on behalf of Vantage adequately assesses project-related increased health risk attributable to TAP emissions.

In the HIA, Landau Associates estimated lifetime increased cancer risks attributable to Vantage-related DEEP and other toxic air pollutant emissions. DEEP emissions resulted in an increase cancer risk of about 9.7 in one million at the maximally impacted commercial receptor located on Vantage data center's property. The maximum risk to residents near Vantage was about 5.7 in one million.

Landau Associates also assessed chronic and acute non-cancer hazards attributable to the project's emissions and those from other background sources and determined that long-term adverse non-cancer health effects from exposure to DEEP are not likely to occur. Acute respiratory hazards, however, are possible from exposure to NO₂ during power outage scenarios that occur during periods of unfavorable pollutant dispersion. If they do happen, these impacts could occur for short periods at locations near Vantage. These impacts may affect sensitive individuals with existing respiratory conditions such as asthma resulting in chest tightness or labored breathing with exercise. Symptoms related to these high exposure episodes would improve once cleaner air conditions resume. Because we do not anticipate frequent or sustained power outages affecting Vantage Data Center, we do not expect concentrations responsible for these hazards to occur frequently.

Finally, Landau Associates and Ecology assessed the cumulative health risk by adding estimated concentrations attributable to Vantage emissions to an estimated background DEEP concentration. The maximum cumulative cancer risk from residents' exposure to DEEP near Vantage is approximately 42 in one million.

Because the increase in cancer risk attributable to the new data center alone is less than the maximum risk allowed by a second tier review, which is 10 in one million, and the non-cancer hazard is acceptable, the project is approvable under WAC 173-460-090.

The project review team concludes that the HIA represents an appropriate estimate of potential increased health risks posed by Vantage TAP emissions. The risk manager may recommend approval of the permit because:

- The cancer risk from Vantage's TAP emissions is less than the maximum risk (10 in one million) allowed by a second tier review.
- Ecology determined that the non-cancer hazard is acceptable.
- We do not expect frequent or sustained power outages because Grant County PUD reports very reliable power availability.

References

CalEPA, California Environmental Protection Agency: Air Resources Board and Office of Environmental Health Hazard Assessment, Proposed Identification of Diesel Exhaust as a Toxic Air Contaminant, 1998, <<http://www.arb.ca.gov/toxics/dieseltac/staffrpt.pdf>>.

-----, Office of Environmental Health Hazard Assessment, “Technical Support Document for Noncancer RELs Appendix D2: Acute RELs and toxicity summaries using the previous version of the Hot Spots Risk Assessment guidelines,” December 2008, <<https://oehha.ca.gov/media/downloads/crnrr/appendixd2final.pdf>>.

-----, Office of Environmental Health Hazard Assessment, A Risk Assessment Evaluation of New Technology Diesel Engine Exhaust Composition, June 4, 2012, Available at: <<https://oehha.ca.gov/air/document/evaluation-new-technology-diesel-engine-exhaust-composition>>.

-----, Office of Environmental Health Hazard Assessment, “Risk Assessment Guidelines: Guidance Manual for Preparation of Health Risk Assessments,” February 2015, <http://www.oehha.ca.gov/air/hot_spots/2015/2015GuidanceManual.pdf>.

Ecology, Washington State Department of Ecology, Concerns about Adverse Health Effects of Diesel Engine Emissions: White Paper, December 3, 2008, <<https://fortress.wa.gov/ecy/publications/publications/0802032.pdf>>.

-----, Washington State Parcels Project: Digital Tax Parcel Information Containing Department of Revenue Land Use Codes, 2019.

-----, Technical Support Document for Draft NOC Approval Order No. 22AQ-E009. Submitted via email April 20, 2022.

EPA, United States Environmental Protection Agency, Health Assessment Document for Diesel Exhaust, EPA/600/8-90/057F, May 2002.

-----, Integrated Risk Information System record for Diesel Exhaust, last revised February 28, 2003, <http://cfpub.epa.gov/ncea/iris2/chemicalLanding.cfm?substance_nmbr=642>.

-----, Risk Assessment Guidance for Superfund Volume I: Human Health Evaluation Manual (Part F, Supplemental Guidance for Inhalation Risk Assessment), January 2009, <https://www.epa.gov/sites/production/files/2015-09/documents/partf_200901_final.pdf>.

Landau Associates. Revised Diesel Engine Exhaust Particulate Matter Health Risk Assessment Report. Quincy, WA. August 6, 2018.

Landau Associates Revised Report: Second-Tier Health Impact Assessment – WA-13 Data Center Expansion, Vantage Data Center Facility, Quincy, WA, March 24, 2022.

National Research Council: Committee on Acute Exposure Guideline Levels; Committee on Toxicology; [Board on Environmental Studies and Toxicology](#); [Division on Earth and Life Studies](#) (2012), The National Advisory Committee for the Development of Acute Exposure Guideline Levels for Hazardous Substances (AEGL Committee), Acute Exposure Guideline Levels for Selected Airborne Chemicals: Volume 11
<http://www.epa.gov/sites/production/files/2015-09/documents/nitrogen_oxides_volume_11_1.pdf>

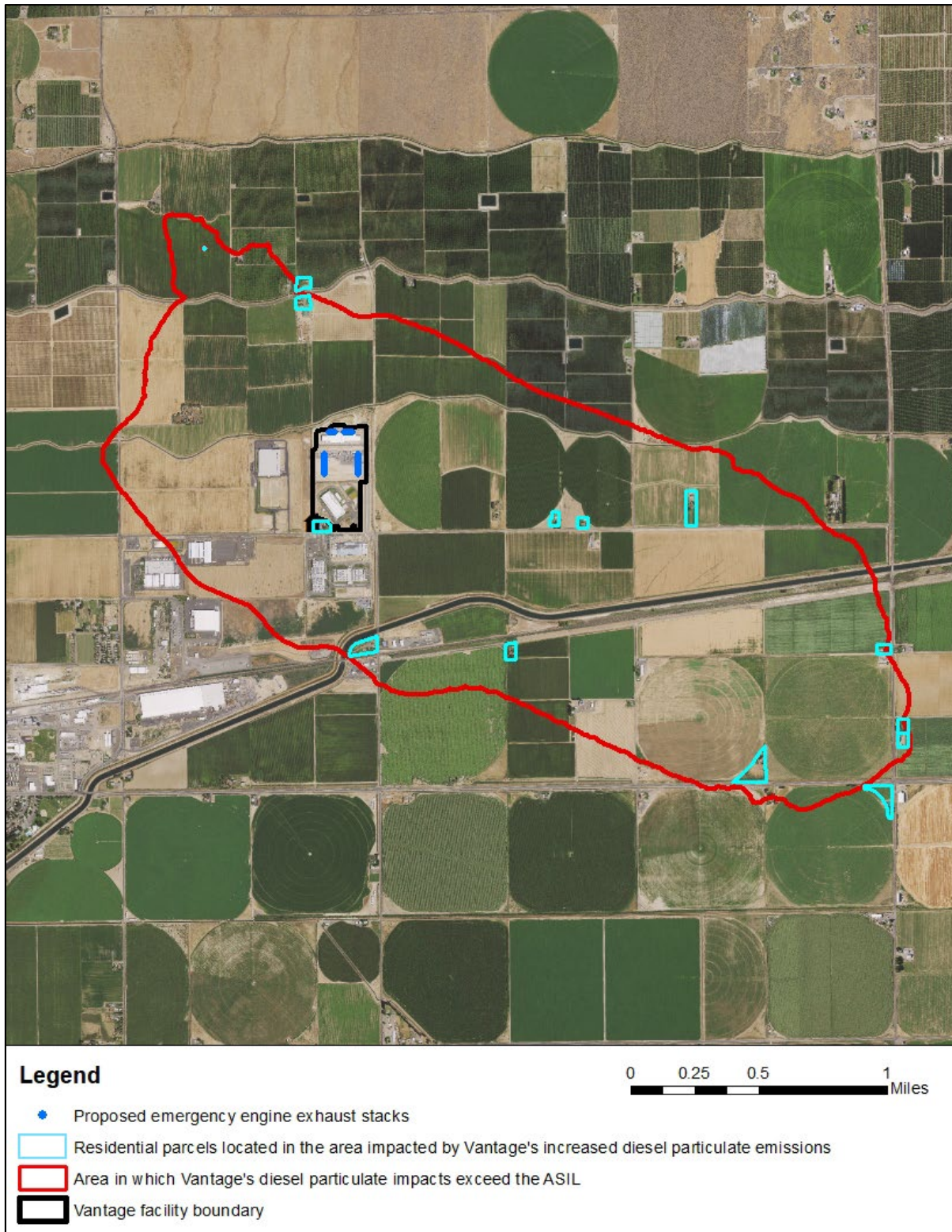


Figure 1: Residential parcels in the area where Vantage's proposed diesel particle emissions may cause impacts that exceed the ASIL

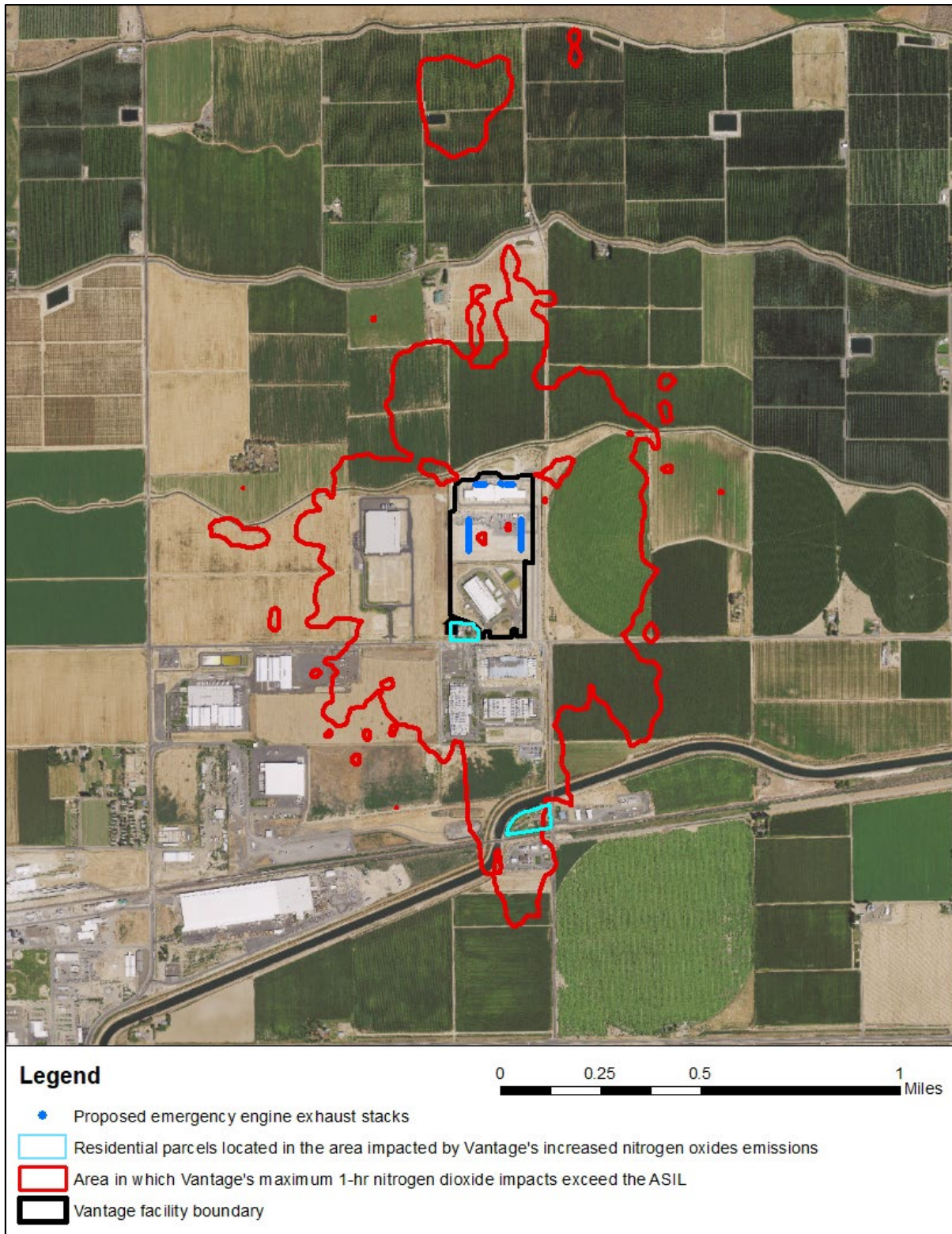


Figure 2: Residential parcels within the area where Vantage's proposed emissions during a power outage could cause NO₂ concentrations to exceed the ASIL

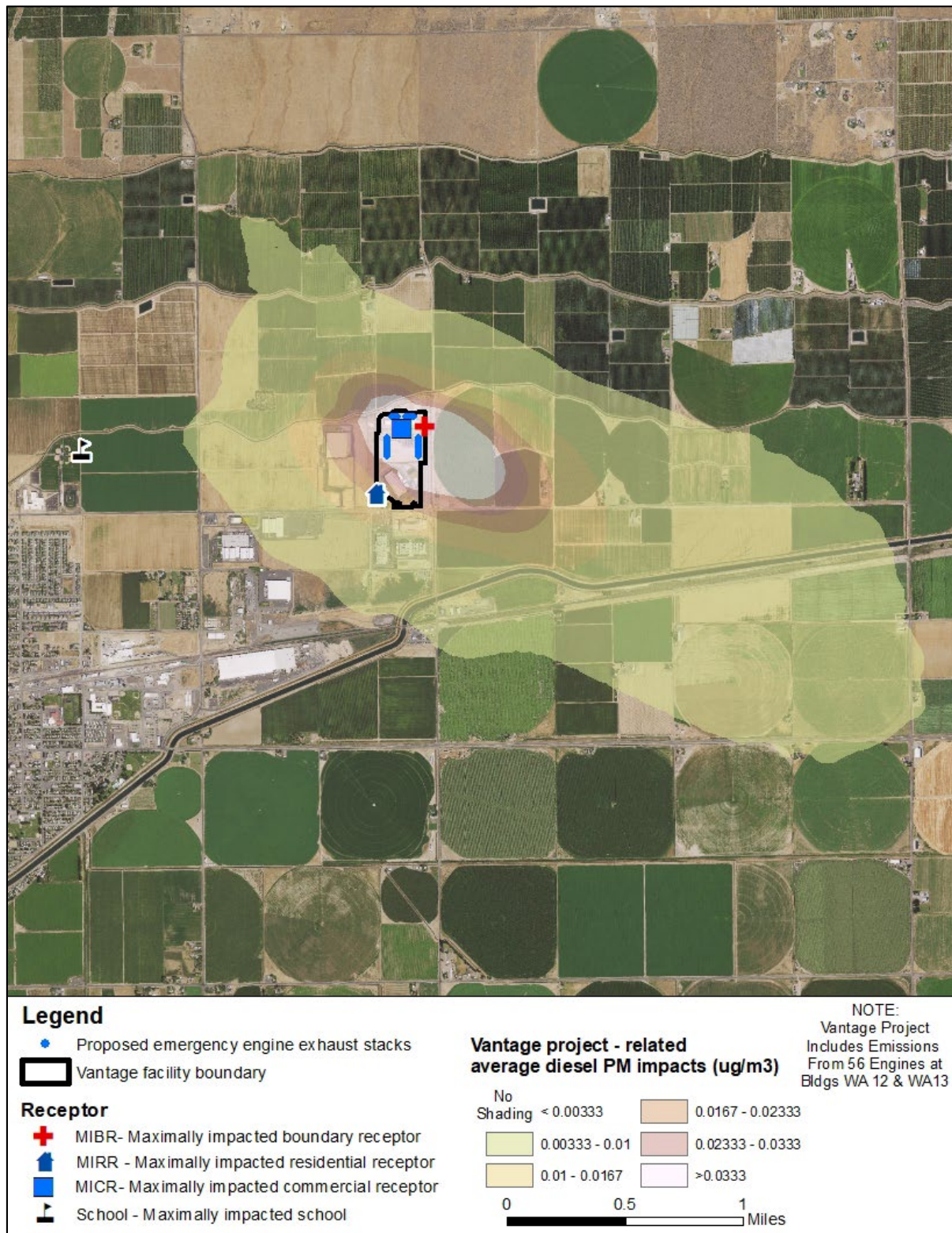


Figure 3: DEEP concentrations attributable to Vantage’s proposed diesel engine emissions and key receptor locations evaluated in the HIA

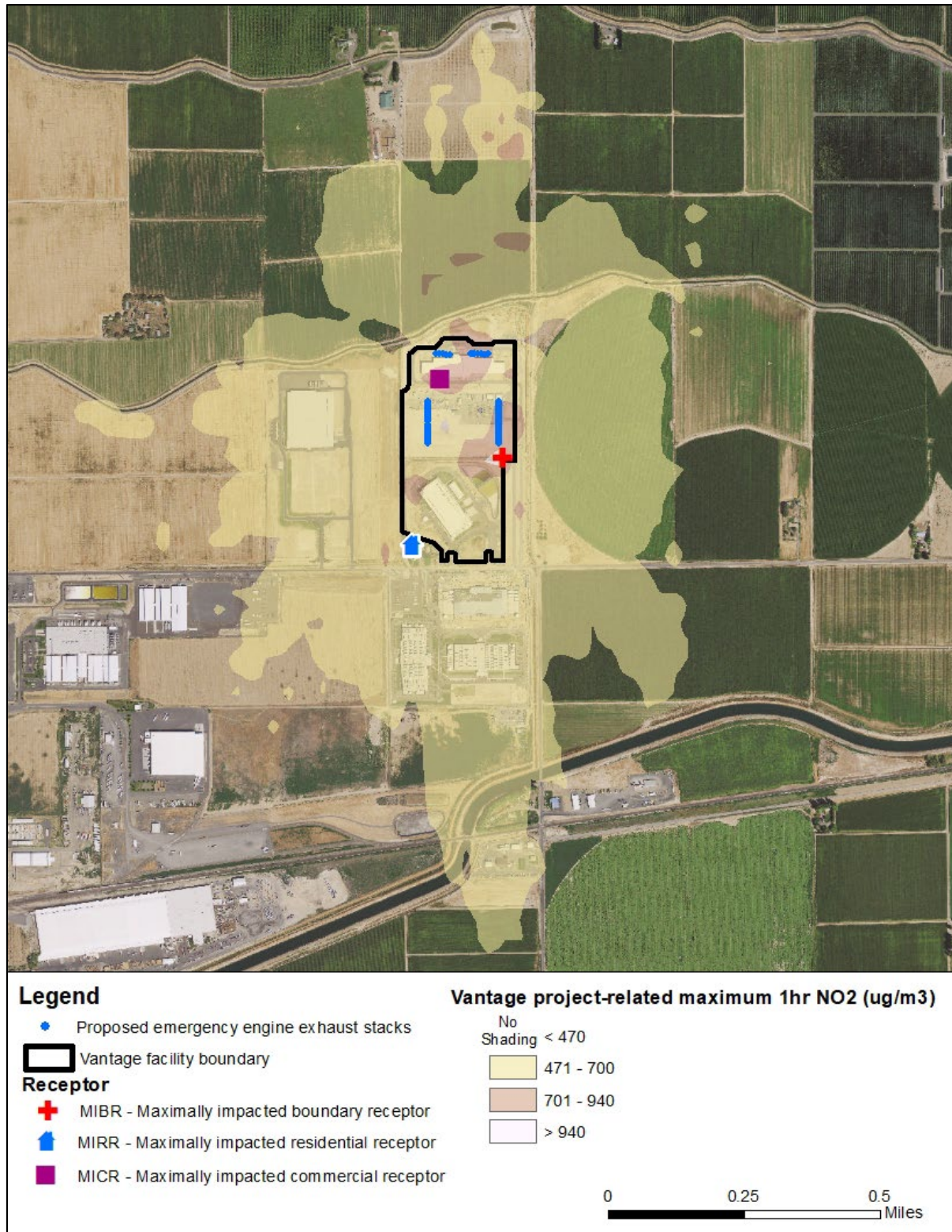


Figure 4: Maximum NO₂ concentrations attributable to Vantage outage emissions and key receptor locations evaluated in the HIA

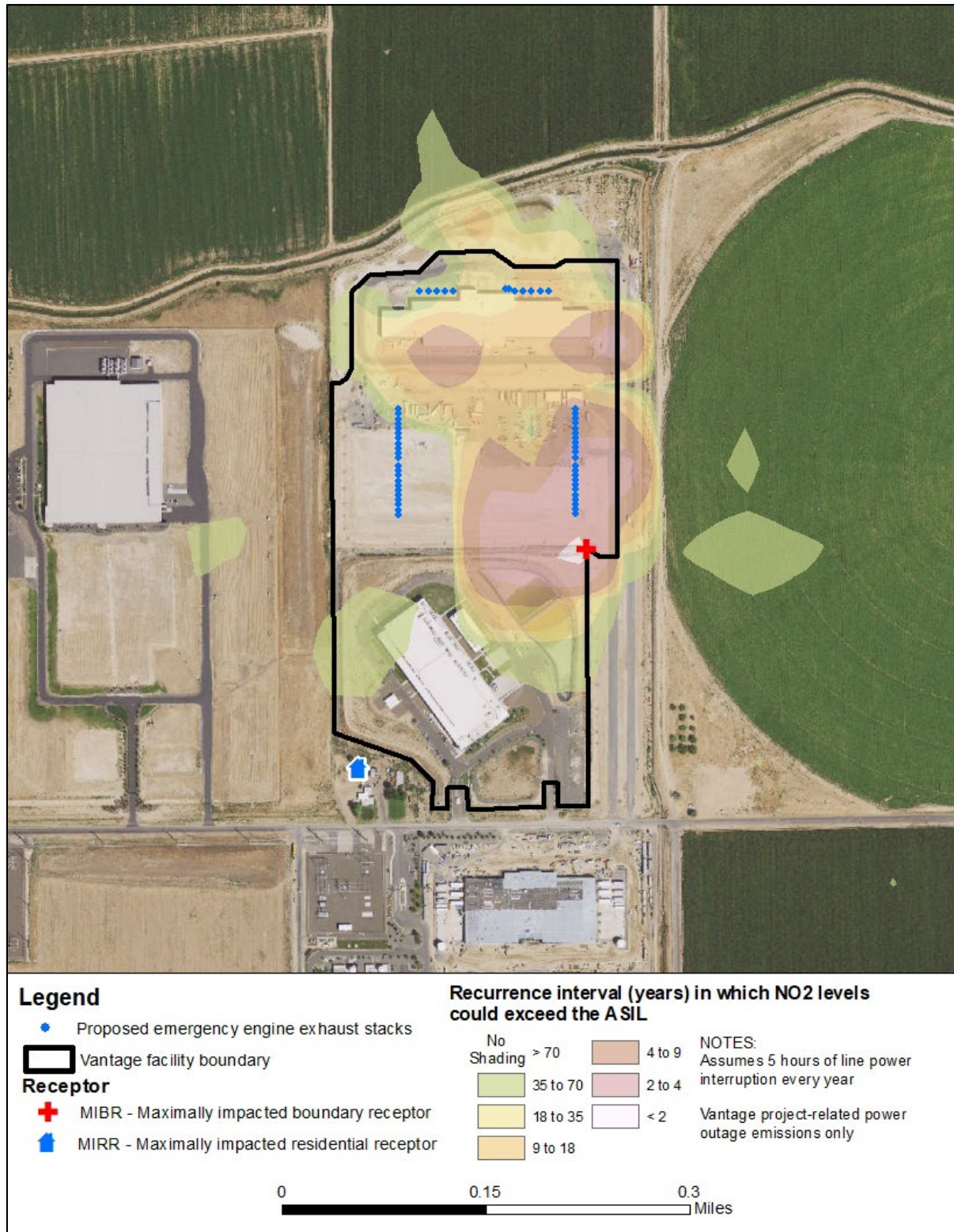


Figure 5: Recurrence interval (years) with which NO₂ concentrations attributable to Vantage outage emissions could exceed the ASIL and key receptor locations evaluated in the HIA