

MAR 02 2018

WATER QUALITY PROGRAM

**ANNUAL PRE-TREATMENT PLAN
FOR ZOSTERA JAPONICA CONTROL ON COMMERCIAL
CLAM BEDS IN WILLAPA BAY
FOR
NORTHERN OYSTER CO.**

Submitted to:

Washington Department of Ecology

February 27, 2018

Author:

David Beugli

WGHOGA

Annual Pre-Treatment Plan

The locations of acreage planned for treatment in 2018, including GPS coordinates of each corner of the area, size in acres of each area, and cooperating adjacent land owners are shown in Table 1.

Table 1. Coordinates of the overall area where japonica control will be implemented. Actual acres to be treated will be less than those indicated by the overall bed boundaries.

Bed Name	Parcel	Acres	Corner Coordinates		Cooperating Landowners
			Latitude	Longitude	
TL620	12112255620	10	46.5081	-124.0257	Taylor Resources Inc.
			46.5081	-124.0238	Heckes Clams Inc.
			46.5100	-124.0228	
			46.5117	-124.0221	
			46.5117	-124.0233	
			46.5087	-124.0257	
E2	79005000002	12	46.6003	-124.0371	Weigardt & Sons Inc.
			46.6007	-124.0360	
			46.6057	-124.0397	
			46.6060	-124.0382	
TL339A	11111555339	0.5	46.4344	-124.0184	Randall Evans
			46.4344	-124.0176	Heckes Clams Inc.
			46.4348	-124.0177	
			46.4349	-124.0183	
E249	79005000249	10	46.5320	-124.0255	Taylor Resources Inc.
			46.5319	-124.0239	
			46.5331	-124.0239	
			46.5331	-124.0218	
			46.5347	-124.0217	
			46.5346	-124.0250	
E215	79005000215	35	46.5590	-124.0187	
			46.5589	-124.0135	
			46.5609	-124.0137	Heckes Clams Inc.
			46.5610	-124.0127	
			46.5666	-124.0127	
			46.5667	-124.0191	

E114	79005000113	40	46.5667	-124.0111	
			46.5738	-124.0131	
			46.5769	-124.0175	
			46.5769	-124.0210	
			46.5665	-124.0163	
E148	79005000148	20	46.6104	-124.0396	Willapa Bay Shellfish
			46.6108	-124.0384	
			46.6139	-124.0387	
			46.6169	-124.0396	
			46.6188	-124.0379	
			46.6192	-124.0389	
			46.6163	-124.0416	
			46.6160	-124.0426	
			46.6126	-124.0405	
C88	79003001088	15	46.6105	-124.0395	
			46.5000	-123.9834	
			46.5043	-123.9804	
			46.5040	-123.9769	
			46.5000	-123.9759	
TL153	13113755153	5	46.5591	-124.0247	
			46.5625	-124.0241	
			46.5625	-124.0189	
			46.5590	-124.0187	
TL53.5	12110355053	5	46.5625	-124.0241	
			46.5667	-124.0237	
			46.5667	-124.0191	
			46.5625	-124.0189	

Annual Pre-Treatment Plan (Maps)

Figures 1-8 show the locations of proposed japonica treatments for 2018. In 2017 treatments occurred on beds TL 53.5, TL153, TL339A, TL620, E114, E215, E249, D99.

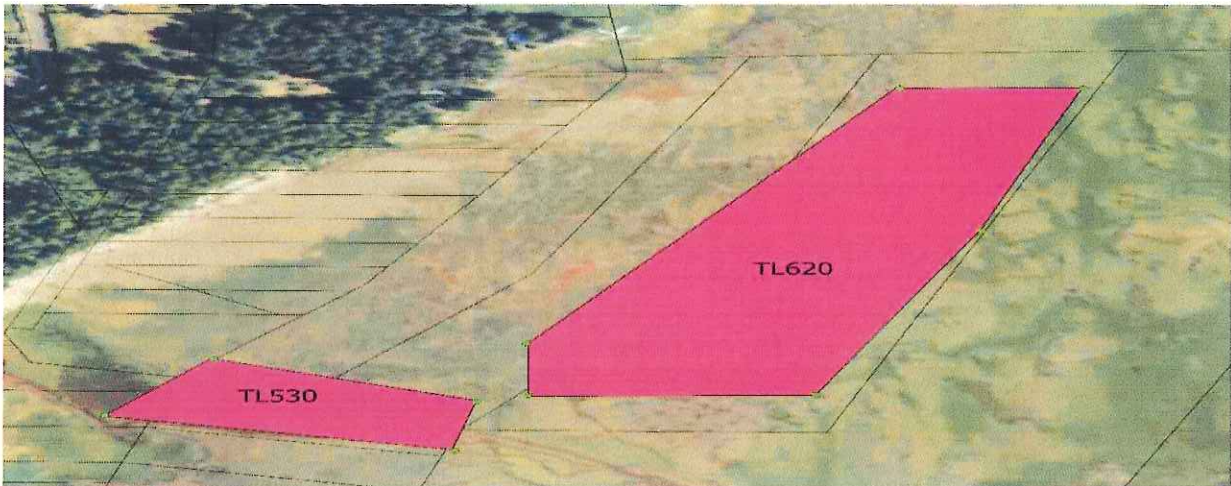


Figure 1. Parcel 12112255620.



Figure 2. Parcel 79005000002.

DEPARTMENT OF ECOLOGY

MAR 02 2018

WATER QUALITY PROGRAM

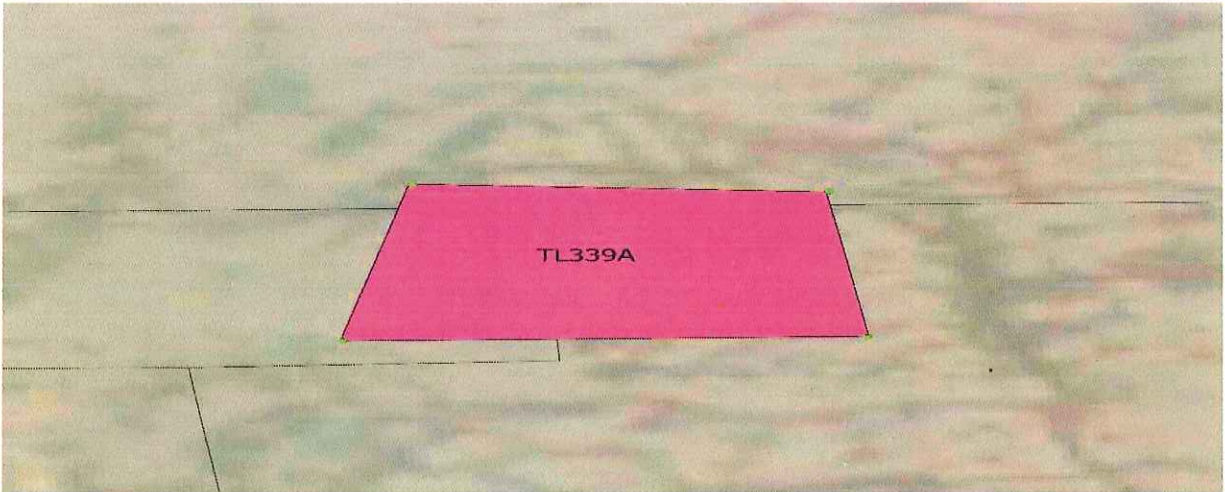


Figure 3. Parcel 11111555339.

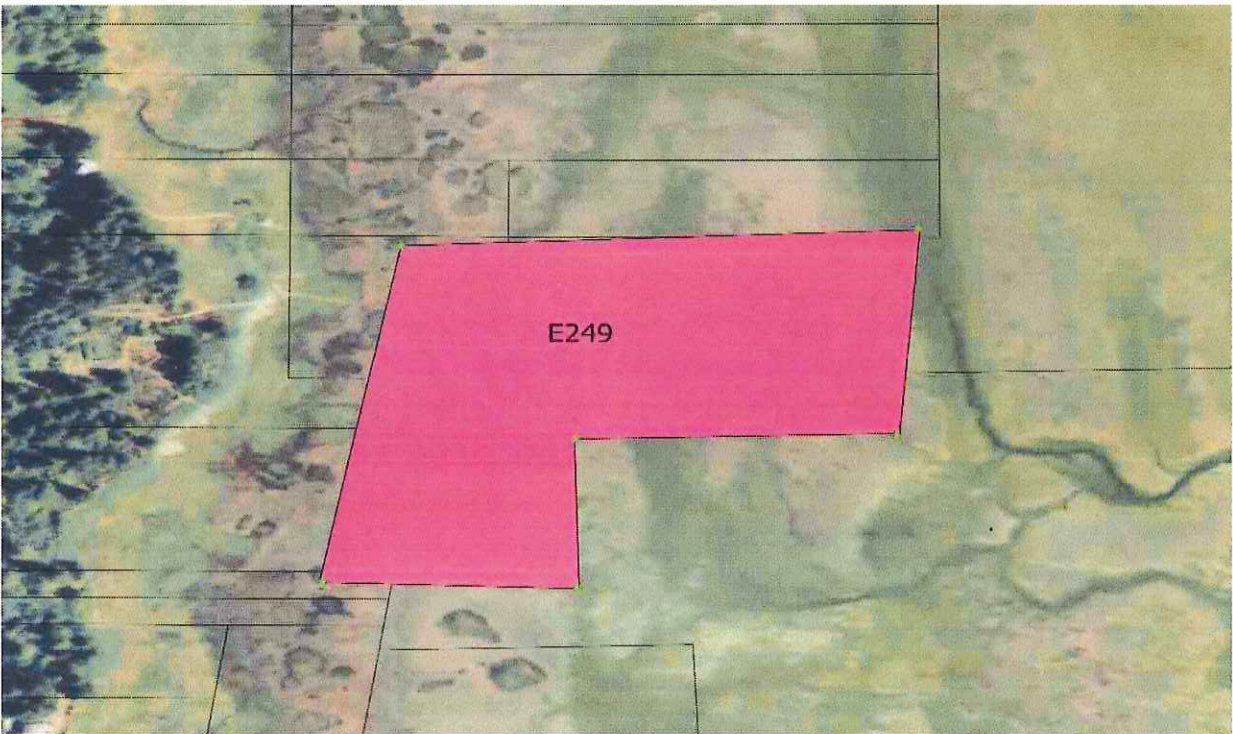


Figure 4. Parcel 79005000249.

DEPARTMENT OF ECOLOGY

MAR 02 2018

WATER QUALITY PROGRAM

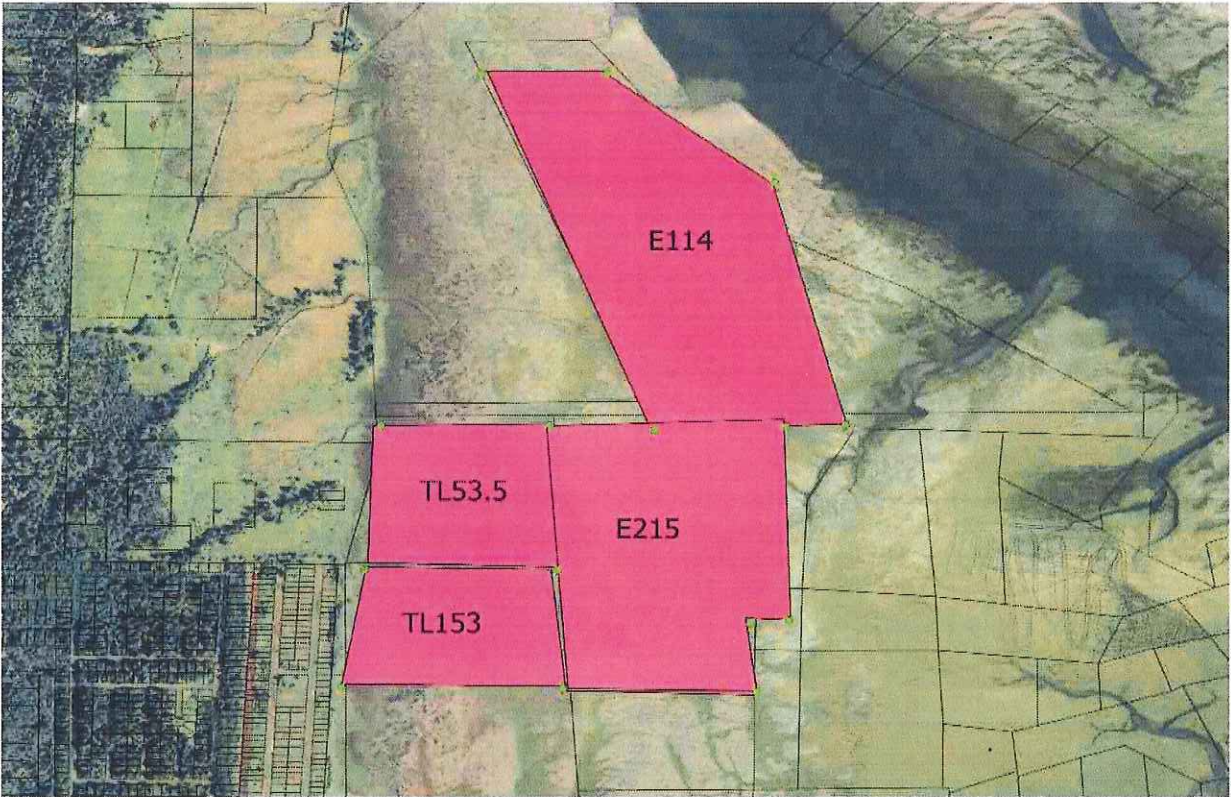


Figure 5. Parcels 79005000215, 79005000113, 12110355053 and 13113755153.



Figure 6. Parcel 79005000148.

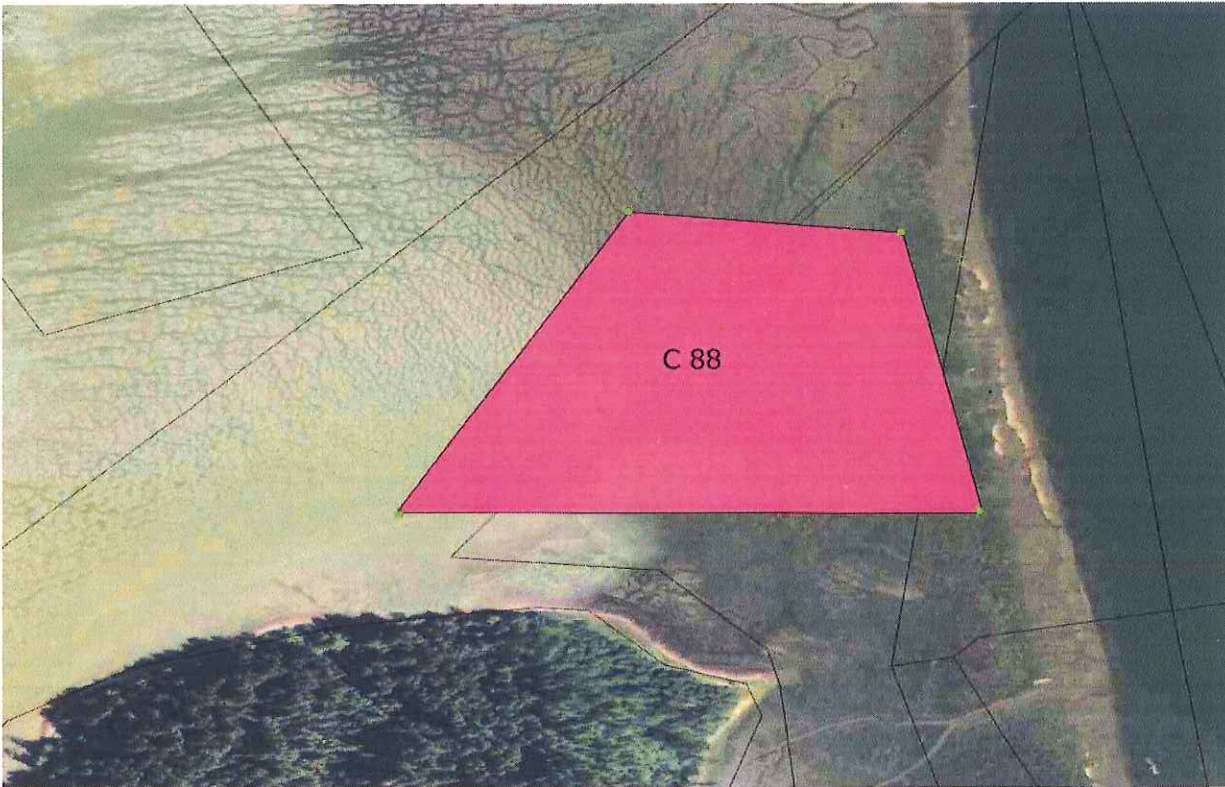


Figure 7. Parcel 79003001088

Signature Requirements

I certify under penalty of law, that this document and all attachments were prepared under my direction or supervision in accordance with a system designed to assure that qualified personnel properly gathered and evaluated the information submitted. Based on my inquiry of those persons directly responsible for gathering information, the information in the Pretreatment Plan is, to the best of my knowledge and belief, true, accurate, and complete and will be updated as necessary. I am aware that there are significant penalties for submitting false information, including the possibility of fine and imprisonment of knowing violations.

Bin Shih

Signature

2-23-18

Date

DEPARTMENT OF ECOLOGY

MAR 02 2018

WATER QUALITY PROGRAM