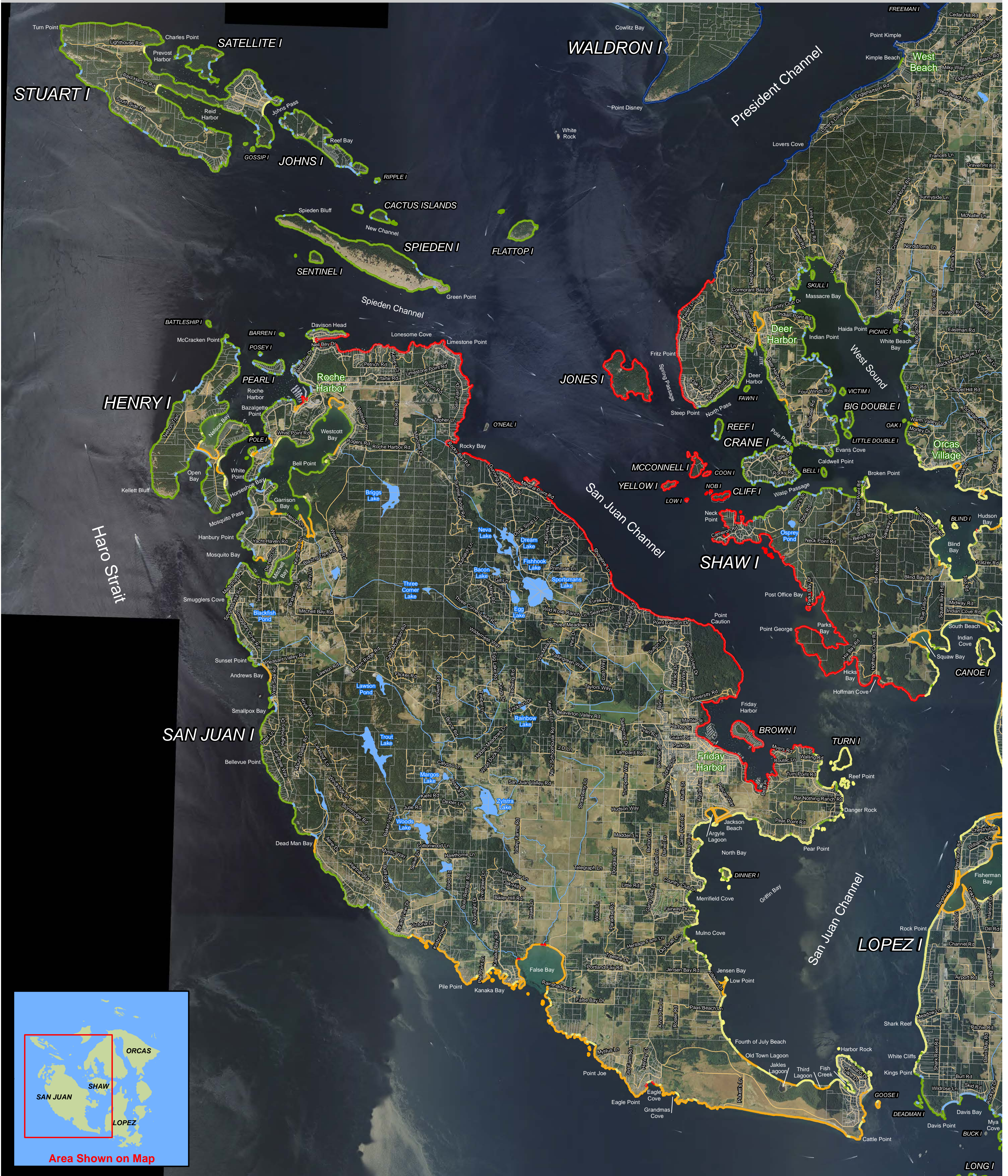


# Map 33A:

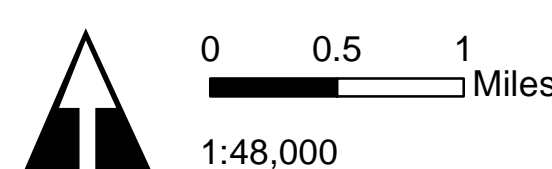
## Fish Presence Probability - Juvenile Pacific Herring

### San Juan County Shoreline Master Program Update



**LEGEND**  
 Probability of presence of juvenile Pacific herring [2012]\*

- 0.000000 - 0.033333
- 0.033334 - 0.088889
- 0.088890 - 0.133333
- 0.133334 - 0.208333
- 0.208334 - 0.328947
- 0.328948 - 0.625000
- Water bodies [2008]\*\*
- Watercourses [2000]\*\*\*
- Parcels [2010]\*\*
- Roads [2009]\*\*



All features depicted on this map are approximate. They have not been formally delineated or surveyed and are intended for planning purposes only. Additional site-specific evaluation may be needed to confirm/verify information shown on this map.

The functionality of this map is optimized when viewed digitally.

10.30.2012

Data sources:

\*Beamer and Fresh  
 \*\*San Juan County  
 \*\*\*Washington Department of Ecology

Shoreline Master Program Update  
 SAN JUAN COUNTY, WA





# Map 33B:

## Fish Presence Probability - Juvenile Pacific Herring

### San Juan County Shoreline Master Program Update



#### LEGEND

Probability of presence of juvenile Pacific herring [2012]\*\*

- 0.000000 - 0.033333
- 0.033334 - 0.088889
- 0.088890 - 0.133333
- 0.133334 - 0.208333
- 0.208334 - 0.328947
- 0.328948 - 0.625000
- Water bodies [2000]\*\*
- Watercourses [2008]\*\*
- Parcels [2010]\*\*
- Roads [2009]\*\*



0 0.5 1 Miles

1:50,000

All features depicted on this map are approximate. They have not been formally delineated or surveyed and are intended for planning purposes only. Additional site-specific evaluation may be needed to confirm/verify information shown on this map.

The functionality of this map is optimized when viewed digitally.

10.30.2012

Data sources:

- \*Beamer and Fresh
- \*\*San Juan County
- \*\*\*Washington Department of Ecology

Shoreline Master Program Update  
SAN JUAN COUNTY, WA





# Map 33C:

## Fish Presence Probability - Juvenile Pacific Herring

### San Juan County Shoreline Master Program Update



#### LEGEND

Probability of presence of juvenile Pacific herring [2012]\*\*

- 0.000000 - 0.033333
- 0.033334 - 0.088889
- 0.088890 - 0.133333
- 0.133334 - 0.208333
- 0.208334 - 0.328947
- 0.328948 - 0.625000

- Water bodies [2008]\*\*
- Watercourses [2000]\*\*\*
- Parcels [2010]\*\*
- Roads [2009]\*\*



0 0.4 0.8  
Miles  
1:38,000

All features depicted on this map are approximate. They have not been formally delineated or surveyed and are intended for planning purposes only. Additional site-specific evaluation may be needed to confirm/verify information shown on this map.

The functionality of this map is optimized when viewed digitally.

10.30.2012

Data sources:

- \*Beamer and Fresh
- \*\*San Juan County
- \*\*\*Washington Department of Ecology

Shoreline Master Program Update

SAN JUAN COUNTY, WA

