

**ANNUAL PRE-TREATMENT PLAN  
FOR ZOSTERA JAPONICA CONTROL ON COMMERCIAL  
CLAM BEDS IN WILLAPA BAY  
FOR  
LONG ISLAND OYSTER**

**Submitted to:**

---

Washington Department of Ecology

March 1, 2015

**Author:**

David Beugli

WGHOGA Project Coordinator

## Annual Pre-Treatment Plan

The locations of acreage planned for treatment in 2015, including GPS coordinates of each corner of the area, size in acres of each area and cooperating adjacent land owners are shown in Table 1.

Table 1. Coordinates of the overall area where japonica control will be implemented. Actual acres to be treated will be less than those indicated by the overall bed boundaries.

Bed Name	Parcel	Acres	Corner Coordinates		Cooperating Landowners
			Latitude	Longitude	
20-13594	NA	20	46.4432	-124.0225	
			46.4443	-124.0190	
			46.4413	-124.0217	
			46.4414	-124.0182	
D26 N1/2	79004006026	21	46.4306	-123.9758	Coast Seafood's Co.
			46.4299	-123.9688	
			46.4289	-123.9684	
			46.4291	-123.9759	
TL52	12112755052	0.5	46.5046	-124.0254	Taylor Resources Inc. Wiegardt & Sons Inc.
			46.5046	-124.0244	
			46.5039	-124.0244	
D31	79004000031	25	46.504	-124.0254	Heckes Clams Inc. Coast Seafood's Co.
			46.4205	-124.0129	
			46.4195	-124.0077	
			46.0086	-124.0086	
D32 S1/2	79004000031	96	46.4174	-124.0128	Coast Seafood's Co.
			46.4173	-124.0126	
			46.4157	-124.0024	
			46.411	-124.0035	
C67, C29, C101	79003000067 79003000029 79003000101	134	46.4125	-124.012	Coast Seafood's Co. Taylor Resources Inc.
			46.527	-123.941	
			46.5279	-123.9388	
			46.5277	-123.9355	
			46.5264	-123.9361	
			46.5255	-123.9315	
			46.5204	-123.9339	
			46.5195	-123.9407	
46.523	-123.9421				

## Annual Pre-Treatment Plan (Maps)

Figures 1-5 show the proposed locations of japonica treatments in 2015. In 2014 treatments occurred on bed 20-13594.

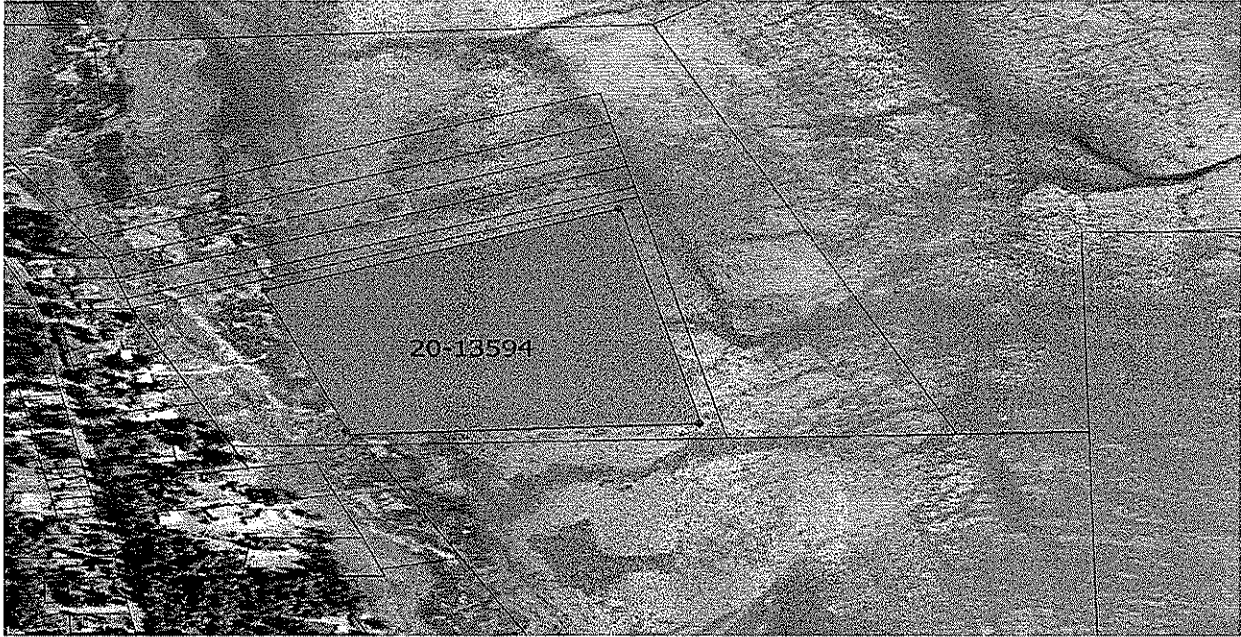


Figure 1. Bed 20-13592

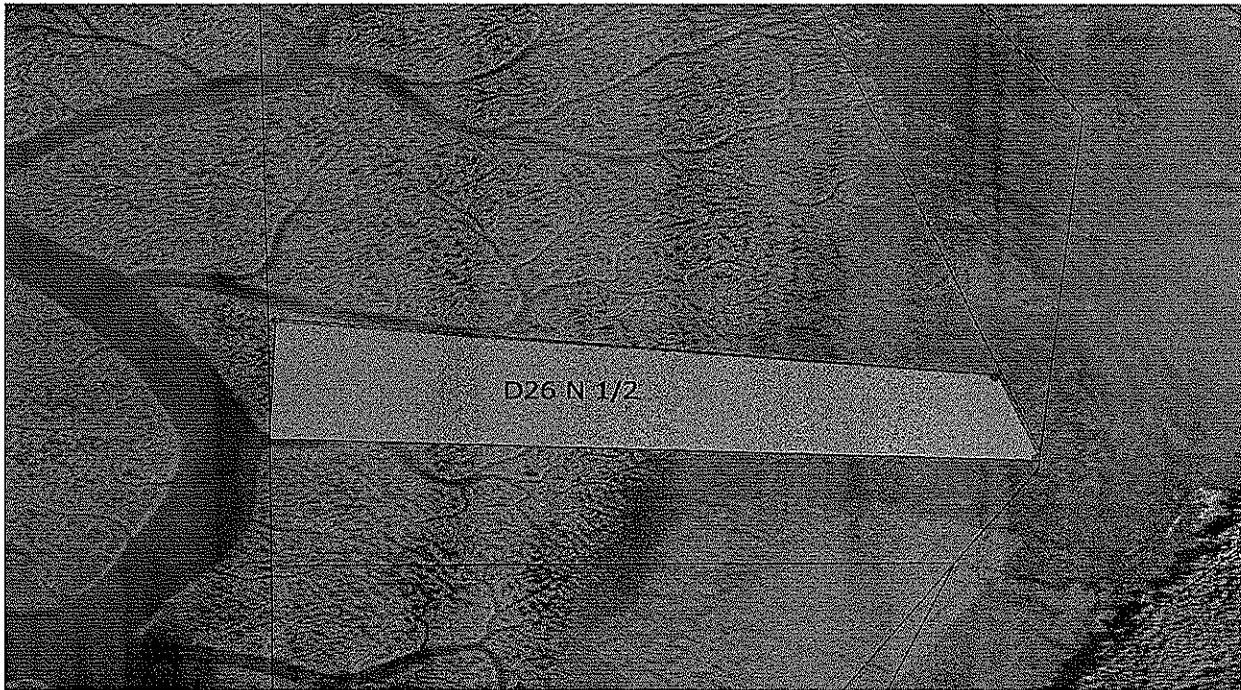


Figure 2. Parcel 79004006026



Figure 3. Parcel 12112755052



Figure 4. Parcel 7900400003



Figure 5. Parcel's 79003000067, 79003000029, 79003000101

## Signature Requirements

*I certify under penalty of law, that this document and all attachments were prepared under my direction or supervision in accordance with a system designed to assure that qualified personnel properly gathered and evaluated the information submitted. Based on my inquiry of those persons directly responsible for gathering information, the information in the Pretreatment Plan is, to the best of my knowledge and belief, true, accurate, and complete and will be updated as necessary. I am aware that there are significant penalties for submitting false information, including the possibility of fine and imprisonment of knowing violations.*

2-25-15

Signature

Date