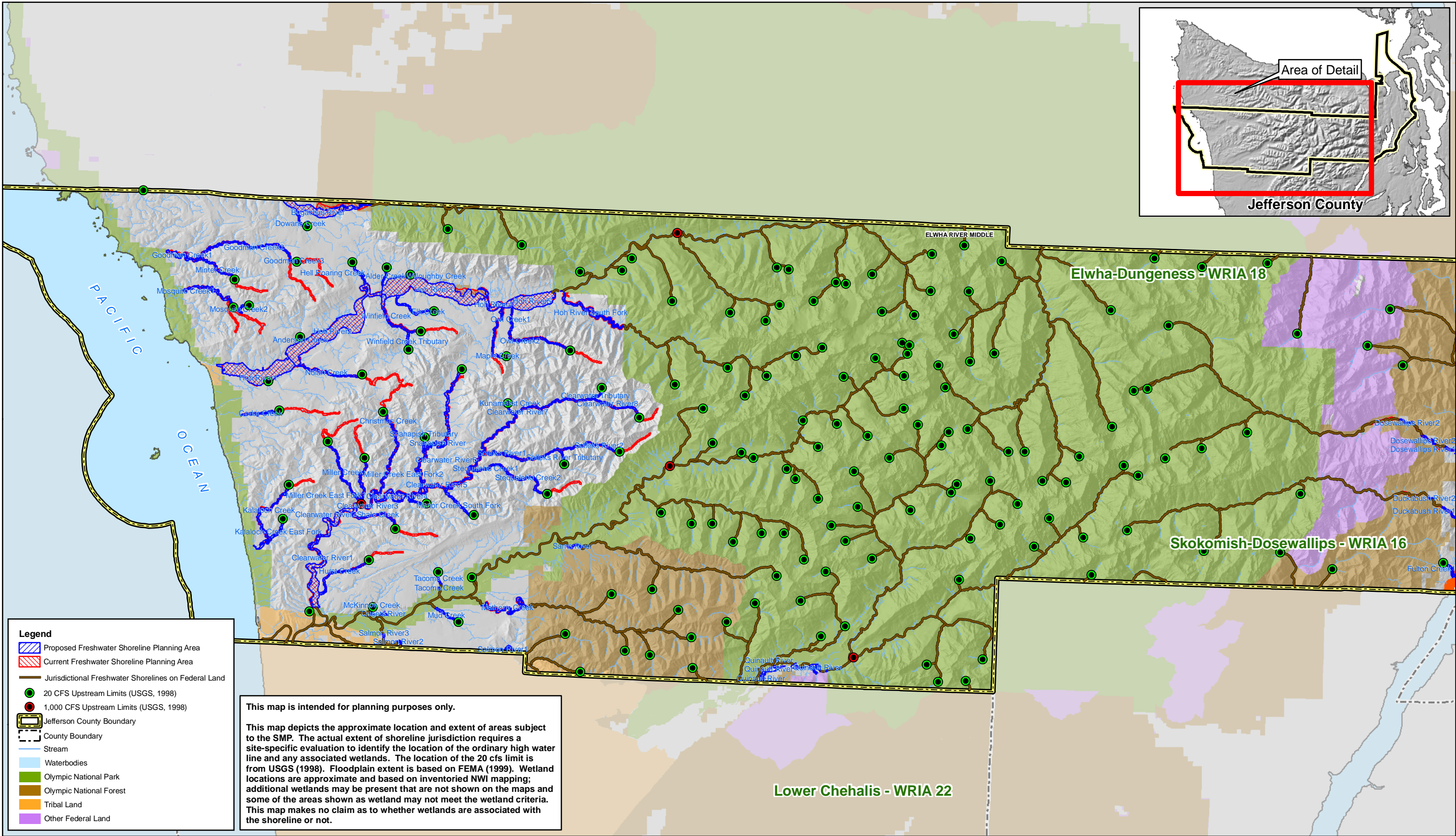


Appendix C – Final Inventory And Characterization Map Folio



G:\ENVIR IMPACTS\2006 Projects\25199_Jefferson_Cy\GIS\GIS Maps\MapFolio\Freshwater_Jurisdiction_Changes_W_3.mxd

KEY AREAS

HYDROLOGY - EAST JEFFERSON COUNTY

ALTERATIONS

Elwha-Dungeness - WRIA 18

Quilcene-Snow - WRIA 17

Queets-Quinault - WRIA 21

Skokomish-Dosewallips - WRIA 16

Kitsap - WRIA 15

NOTES:

This map is intended for planning purposes only.

KEY AREAS

- * CMZ = high and moderate CMZ, but not disconnected CMZ
- * Infiltration Areas = high and moderate permeability
- * Storage Areas = floodplains and high and moderate CMZs, NWI wetlands, and hydric soils on 2% slopes, and all lakes, streams, and rivers

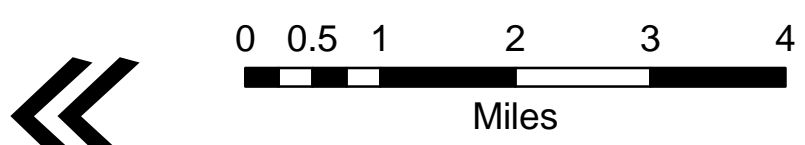
ALTERATIONS

- * Human Imprint = high intensity land use, transportation, agriculture, and urban land
- * Altered Storage = human imprint on key storage areas
- * Altered Infiltration = human imprint on permeable deposits and early seral stage in ROS zones

Shorelines of the state are based on WAC 173-18-200 and 173-20-340; the existing Jefferson County SHAP (1989); and on 20 dls limits from USGS (1989) per Maps 1A and 1B.

Legend

- Jefferson County Boundary
- WRIA Boundaries
- Watershed Boundary
- Permeability**
 - High
 - Medium
- Hydric Soils on 2% Slopes
- Streams
- Wetlands
- FEMA 100-Year Flood
- Hydric Soils
- Snow dominated zones
- Rain on snow (ROS) zones
- CMZ
- Late Seral Stage
- Early Seral Stage
- Human Imprint
- Waterbodies



KEY AREAS

WATER QUALITY - EAST JEFFERSON COUNTY

ALTERATIONS

Island - WRIA 6

Island - WRIA 6

Elwha-Dungeness - WRIA 18

Elwha-Dungeness - WRIA 18

Quilcene-Snow - WRIA 17

Quilcene-Snow - WRIA 17

Queets-Quinault - WRIA 21

Queets-Quinault - WRIA 21

Skokomish-Dosewallips - WRIA 16

Skokomish-Dosewallips - WRIA 16

Kitsap - WRIA 15

Kitsap

NOTES:

This map is intended for planning purposes only.

KEY AREAS

* Storage/ Removal Areas = high and moderate permeability, floodplains, NWI wetlands, and hydric soils on 2% slopes, and all lakes, streams, and rivers

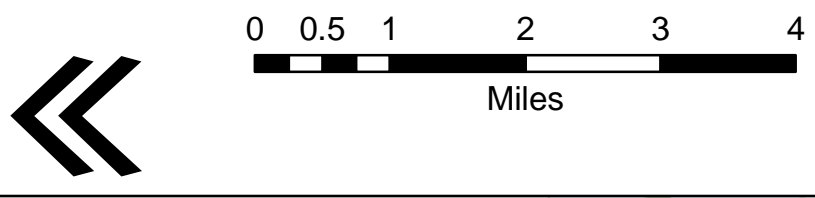
ALTERATIONS

* Human Imprint = high intensity land use, transportation, agriculture, and urban land

* Altered Storage = lost wetlands, human imprint on key storage areas

* Increased Inputs = dairy farms, septic, tilled fields

Shorelines of the state are based on WAC 173-18-200 and 173-20-340, the existing Jefferson County SMP (1989), and on 20-ft limits from USGS (1989) per Maps 1A and 1B.



MAP 4
JEFFERSON COUNTY WATER QUALITY - EASTERN JEFFERSON COUNTY
JEFFERSON COUNTY SHORELINE MAP FOLIO
JUNE, 2008

Legend

- Jefferson County Boundary
- WRIA Boundaries
- Watershed
- Wetlands
- Permeability
 - High
 - Medium
- Dairy Farms
- Septic Permits
- Tilled Fields
- Lost Wetlands
- Human Imprint
- Hydric Soils on 2% Slopes
- Streams
- Lake
- Waterbodies

KEY AREAS

WATER QUALITY - WEST JEFFERSON COUNTY

ALTERATIONS

Lyre-Hoko - WRIA 19

Lyre-Hoko - WRIA 19

Soleduc - WRIA 20

Soleduc - WRIA 20

Elwha-Dungeness - WRIA 18

Elwha-Dungeness - WRIA 18

Queets-Quinault - WRIA 21

Queets-Quinault - WRIA 21

Skokomish-Dosewallips - WRIA 16

Skokomish-Dosewallips - WRIA 16

Lower Chehalis - WRIA 22

Lower Chehalis - WRIA 22

NOTES:

This map is intended for planning purposes only.

KEY AREAS

* Storage/ Removal Areas = high and moderate permeability, floodplains, NWI wetlands, and hydric soils on 2% slopes, and all lakes, streams, and rivers

ALTERATIONS

* Human Imprint = high intensity land use, transportation, agriculture, and urban land

* Altered Storage = lost wetlands, human imprint on key storage areas

* Increased Inputs = dairy farms, septic, tilled fields

Shorelines of the state are based on WAC 173-19-200 and 173-20-340, the existing Jefferson County SMP (1989), and on 20 cts limits from USGS (1996) per Maps 1A and 1B.

Legend

Jefferson County Boundary

WRIA Boundaries

Watershed

Wetlands

Permeability

High

Medium

Dairy Farms

Septic_Permits

Tilled_Fields

Lost_Wetlands

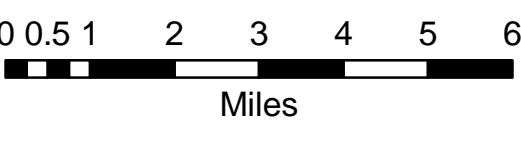
Human_Imprint

Hydric Soils on 2% Slopes

Streams

Lake

Waterbodies



MAP 5
JEFFERSON COUNTY WATER QUALITY - WEST JEFFERSON COUNTY
JEFFERSON COUNTY SHORELINE MAP FOLIO
JUNE, 2008

KEY AREAS

SEDIMENT - EAST JEFFERSON COUNTY

ALTERATIONS

Elwha-Dungeness - WRIA 18

Quilcene-Snow - WRIA 17

Island - WRIA 6

Queets-Quinalt - WRIA 21

Skokomish-Dosewallips - WRIA 16

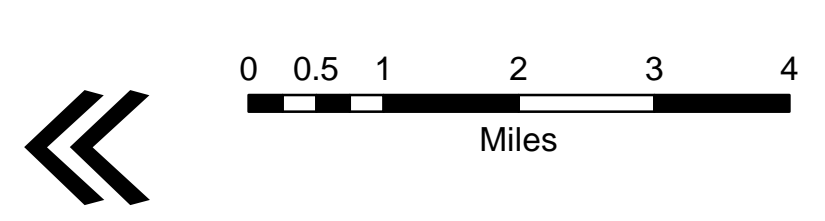
Kitsap - WRIA 15

NOTES:
This map is intended for planning purposes only.

KEY AREAS
* Erodible soils / landslide hazard areas
* CMZ = high and moderate CMZ, but not disconnected CMZ

ALTERATIONS
* Road density = miles per watershed square miles
* Roads within 200 feet of streams
* Human Imprint = high intensity land use, transportation, agriculture, and urban land

Shorelines of the state are based on WAC 173-18-200 and 173-20-340, the existing Jefferson County SMP (1989), and on 20 cfs limits from USGS (1998) per Maps 1A and 1B.



MAP 6
JEFFERSON COUNTY SEDIMENT - EASTERN JEFFERSON COUNTY
JEFFERSON COUNTY SHORELINE MAP FOLIO
JUNE, 2008

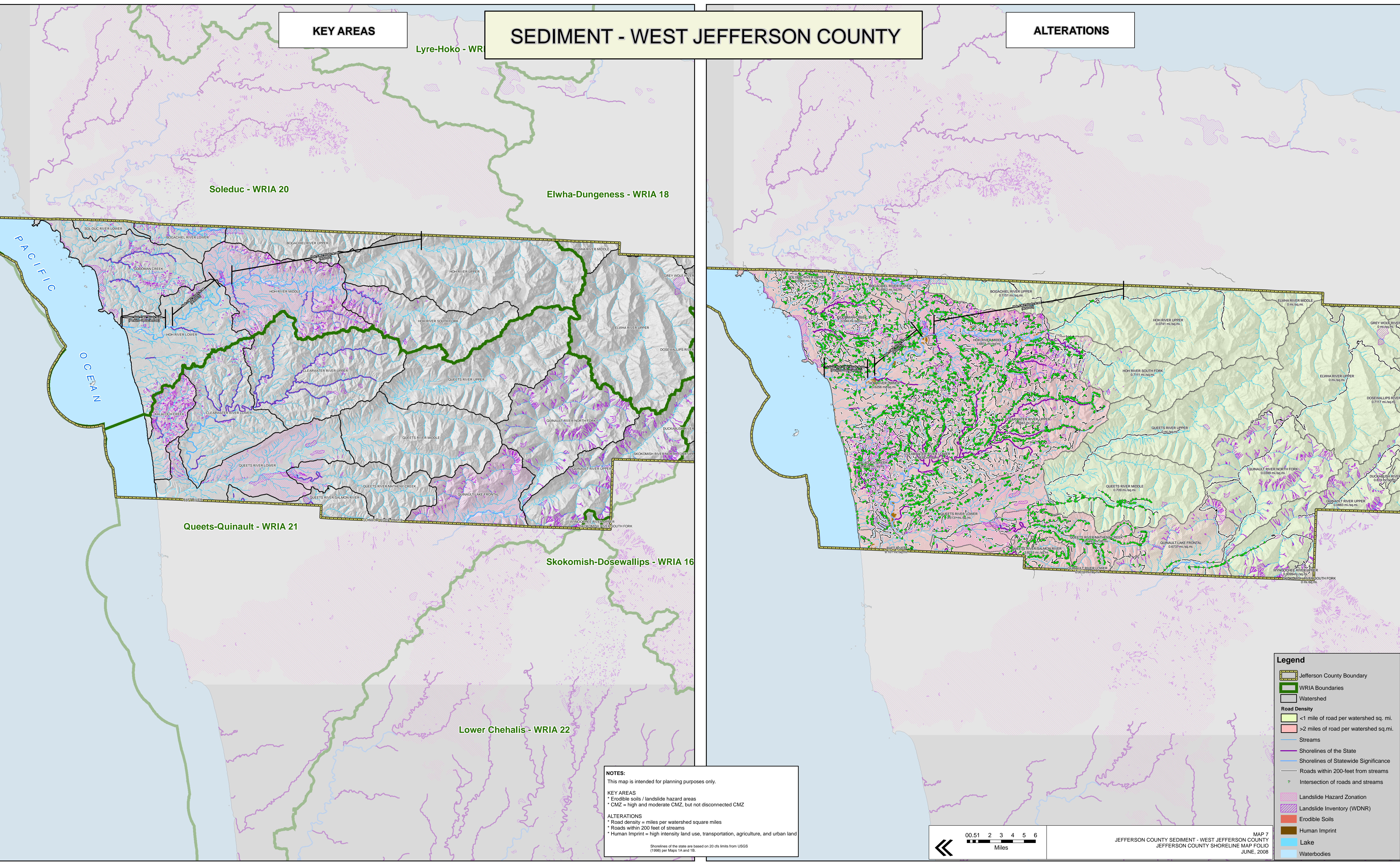
Legend

- Jefferson County Boundary
- WRIA Boundaries
- Watershed
- Road Density
 - <1 mile of road per watershed sq. mi.
 - >2 miles of road per watershed sq. mi.
- Streams
- Shorelines of the State
- Shorelines of Statewide Significance
- Roads within 200-feet from streams
- Intersection of roads and streams
- CMZ
- Landslide Hazard Zonation
- Landslide Inventory (WDNR)
- Erodible Soils
- Human Imprint
- Lake
- Waterbodies

KEY AREAS

SEDIMENT - WEST JEFFERSON COUNTY

ALTERATIONS



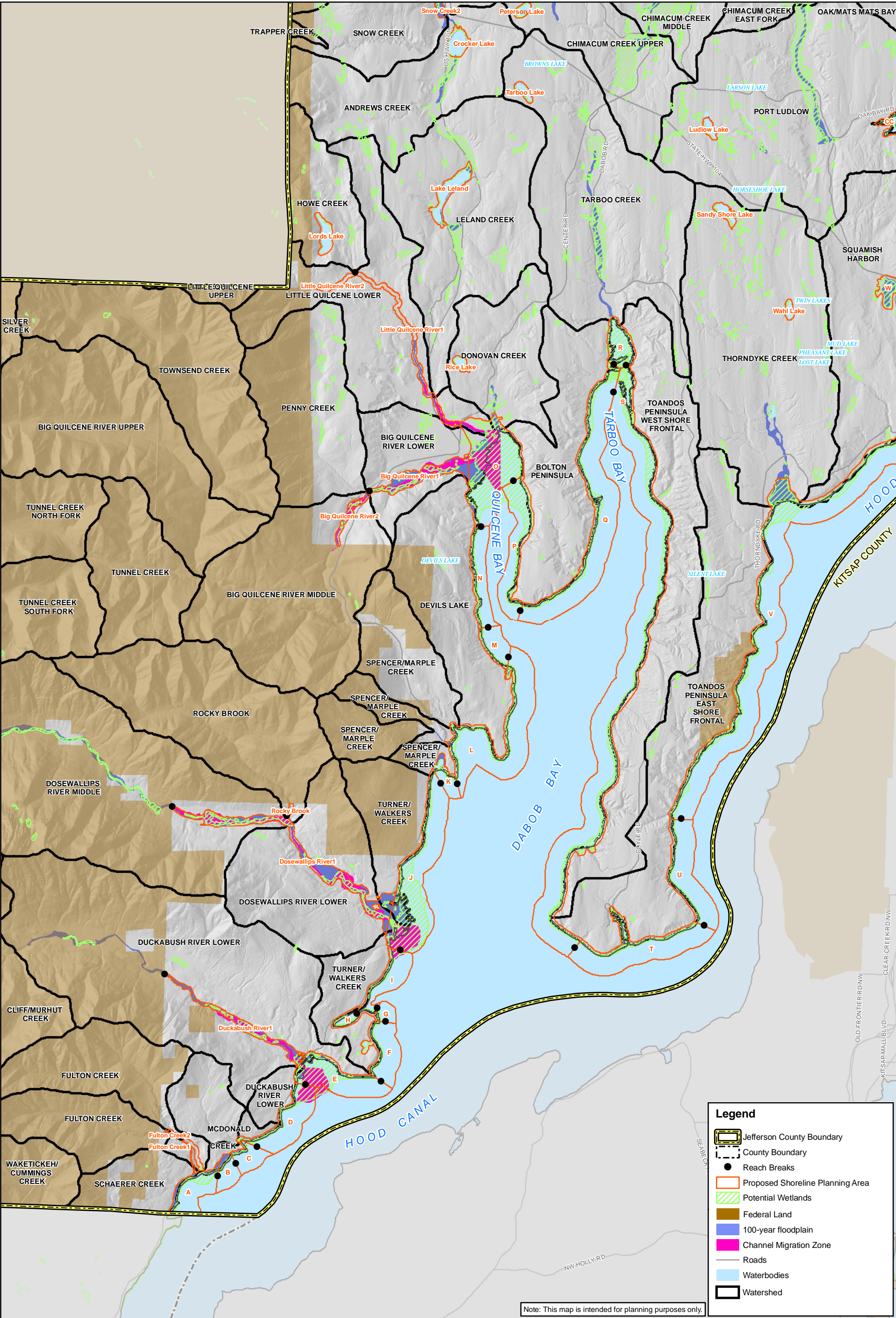
NOTES:
This map is intended for planning purposes only.

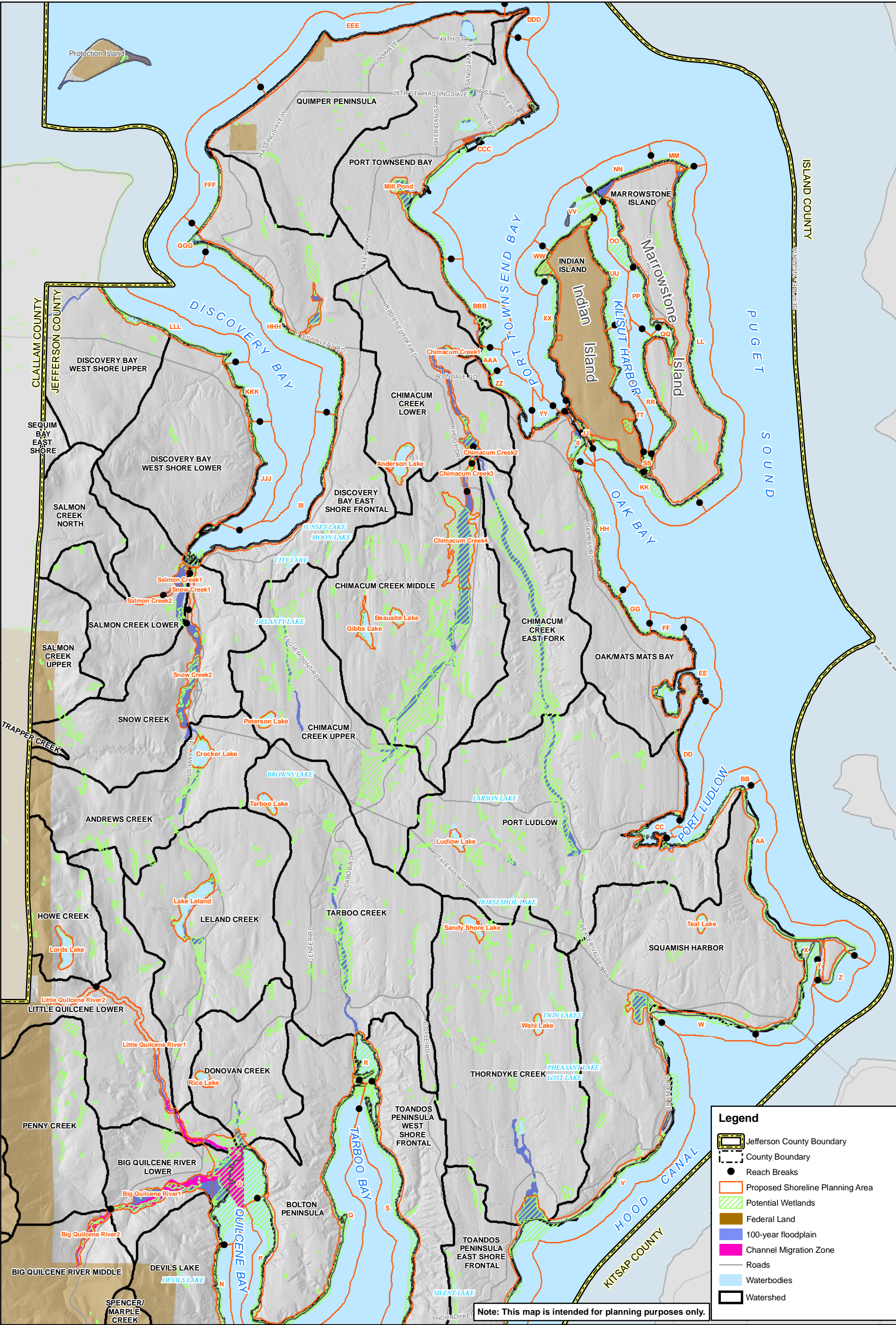
KEY AREAS
* Erodeable soils / landslide hazard areas
* CMZ = high and moderate CMZ, but not disconnected CMZ

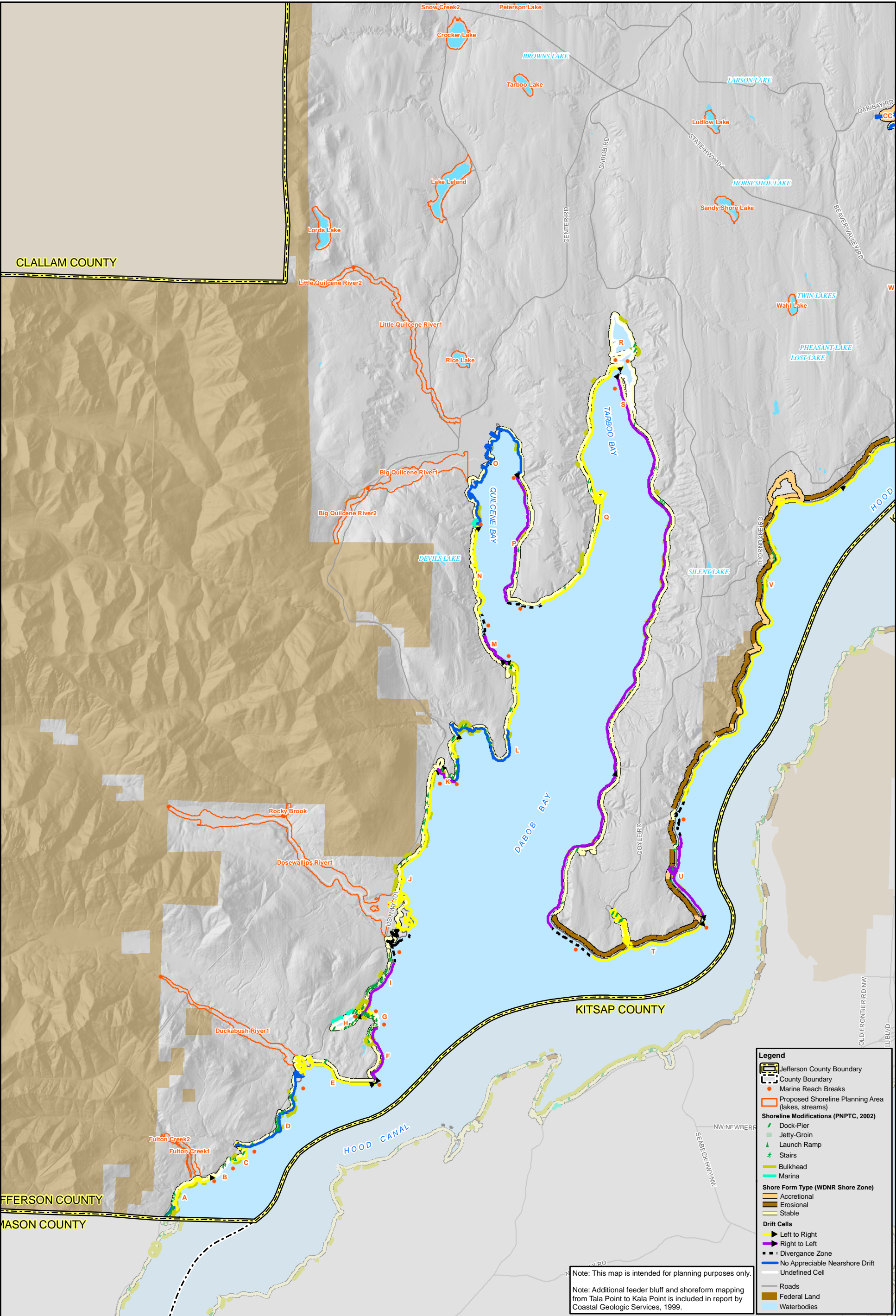
ALTERATIONS
* Road density = miles per watershed square miles
* Roads within 200 feet of streams
* Human Imprint = high intensity land use, transportation, agriculture, and urban land

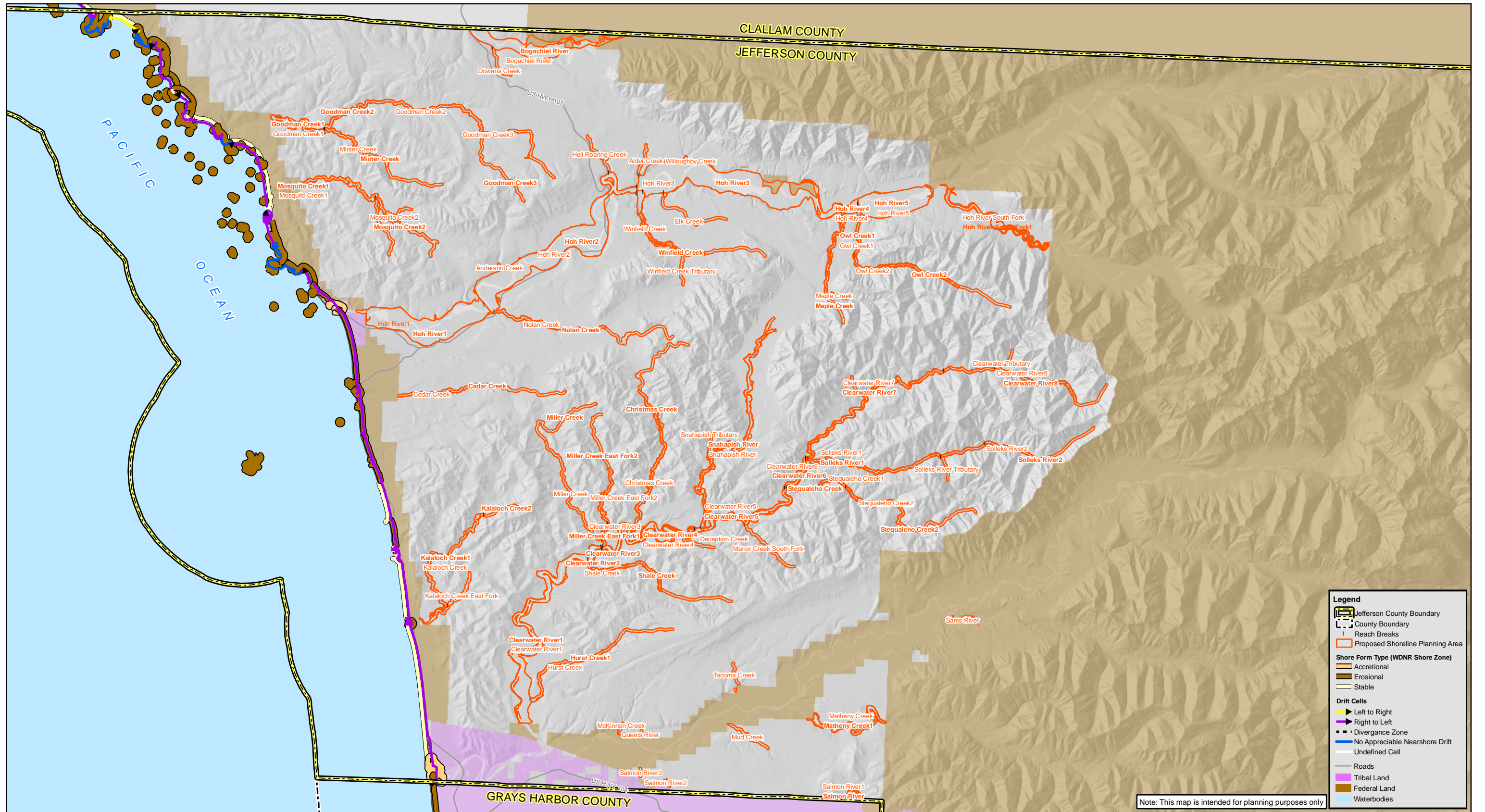
Shorelines of the state are based on 20 cfs limits from USGS (1986) per Maps 1A and 1B.

- Legend**
- Jefferson County Boundary
 - WRIA Boundaries
 - Watershed
 - Road Density**
 - <1 mile of road per watershed sq. mi.
 - >2 miles of road per watershed sq. mi.
 - Streams
 - Shorelines of the State
 - Shorelines of Statewide Significance
 - Roads within 200-feet from streams
 - Intersection of roads and streams
 - Landslide Hazard Zonation
 - Landslide Inventory (WDNR)
 - Erodeable Soils
 - Human Imprint
 - Lake
 - Waterbodies









File name: Map13GeoPhysical_VW.pdf
Created/last edited by: AMB
Date last updated: 06/13/08



Miles

Note: Shorelines of the state are based on 20 cfs limits from USGS (1998).



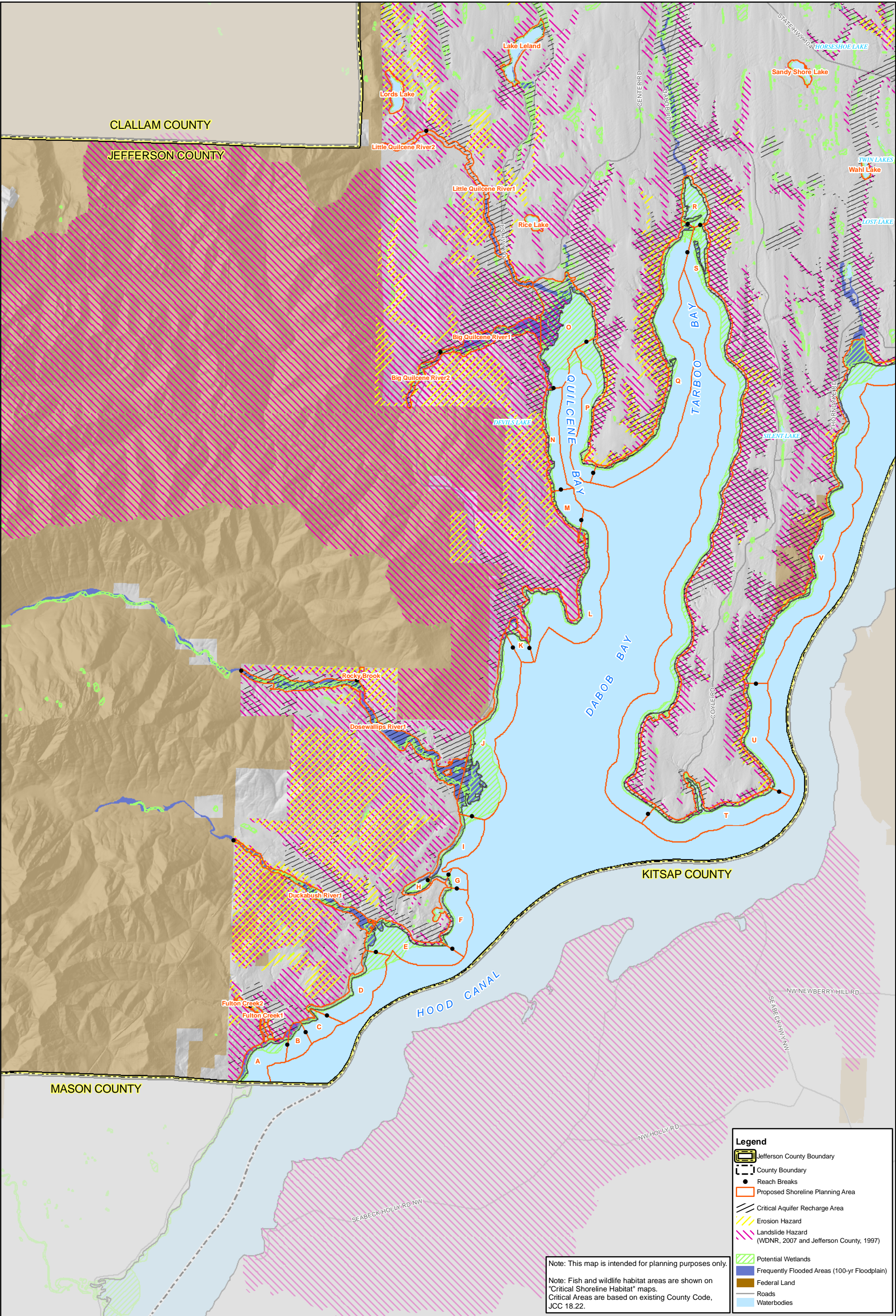
Map data are the property of the sources listed below.
Inaccuracies may exist, and ESA Adolfson implies no
warranties or guarantees regarding any aspect of data depiction.
SOURCE: Jefferson County GIS, 2005; WDNR, 2001; Ecology GIS

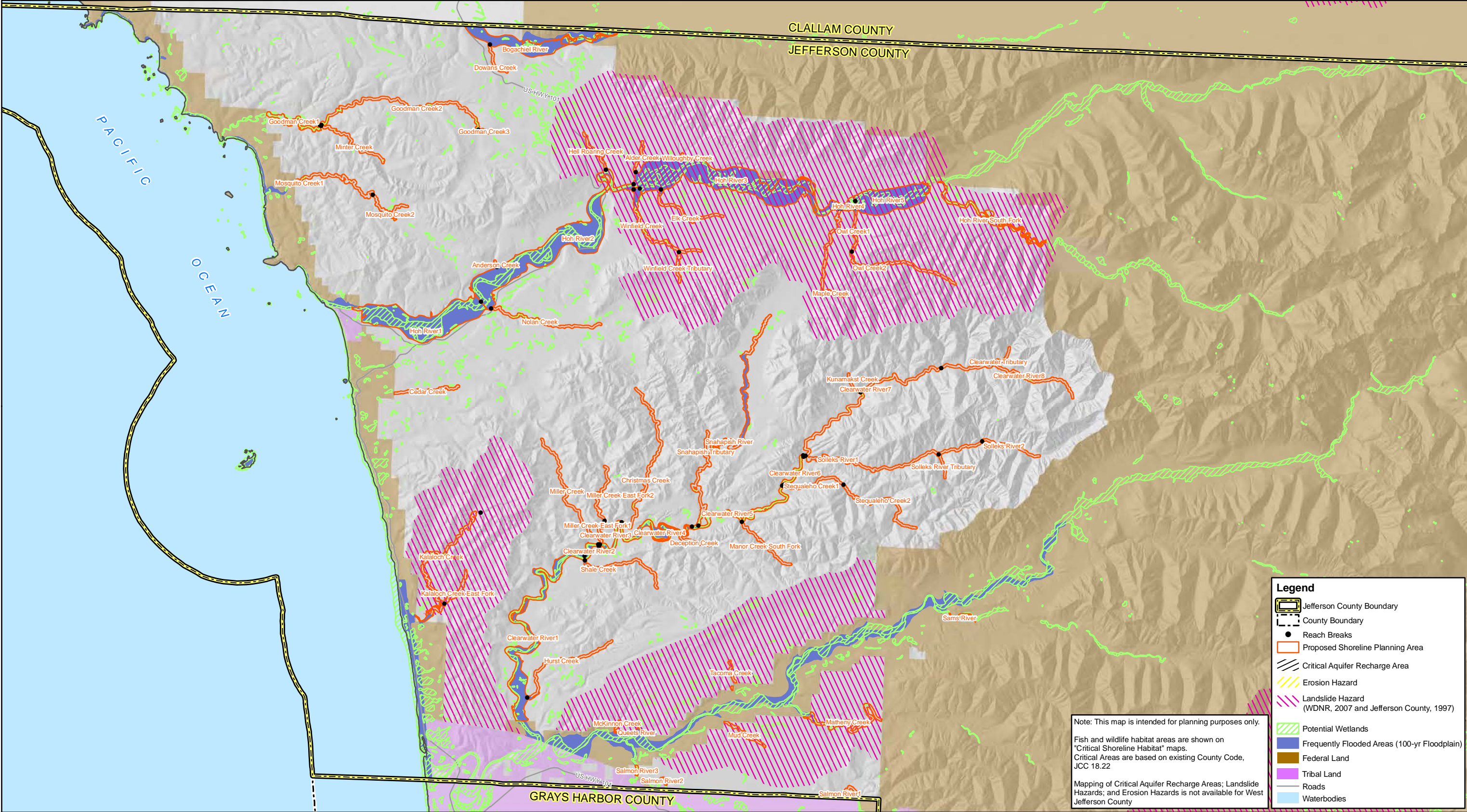
MAP 13

COASTAL PROCESSES AND MODIFICATIONS - WEST JEFFERSON COUNTY

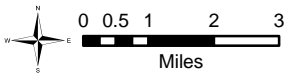
JEFFERSON COUNTY SHORELINE MAP FOLIO

JUNE, 2008



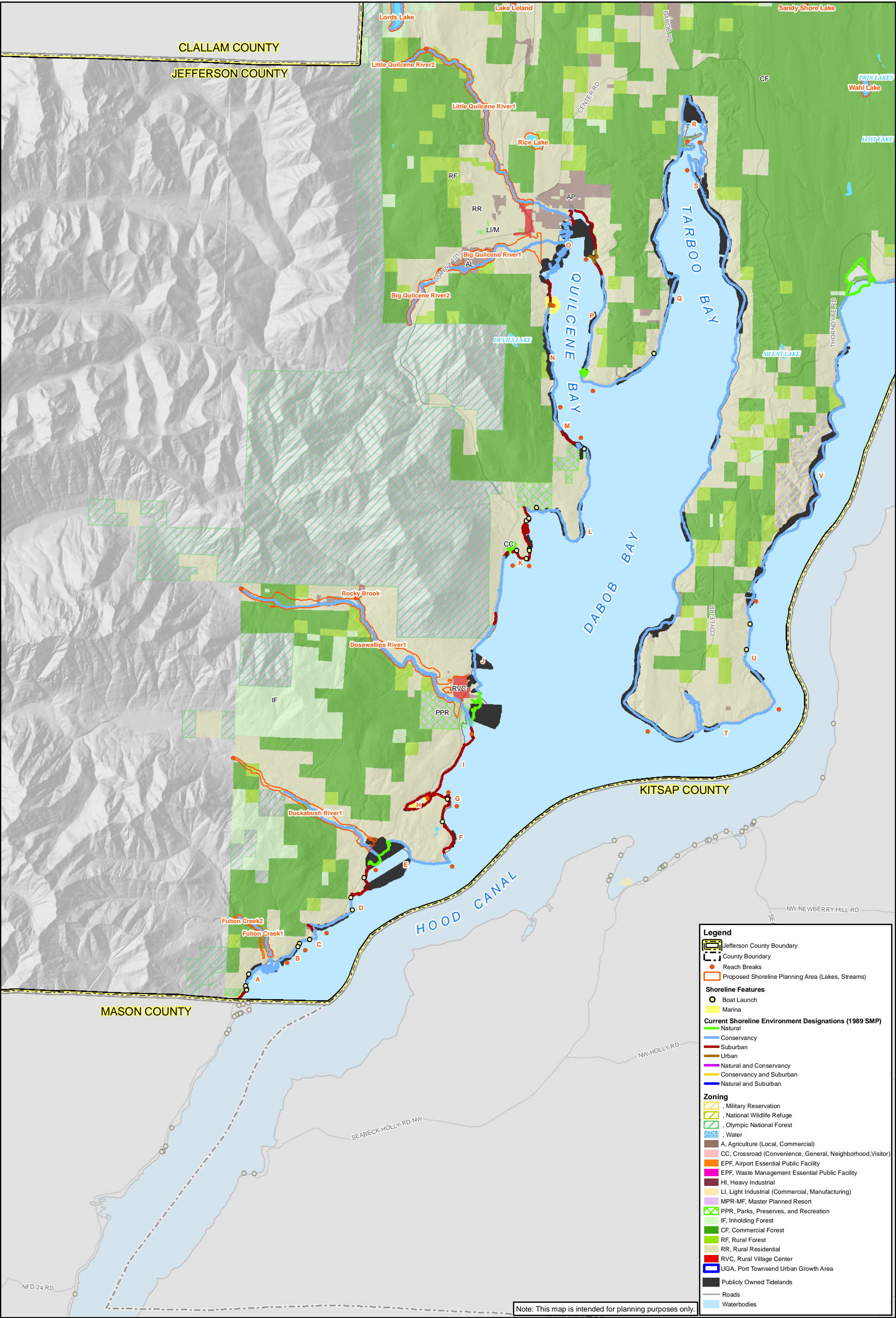


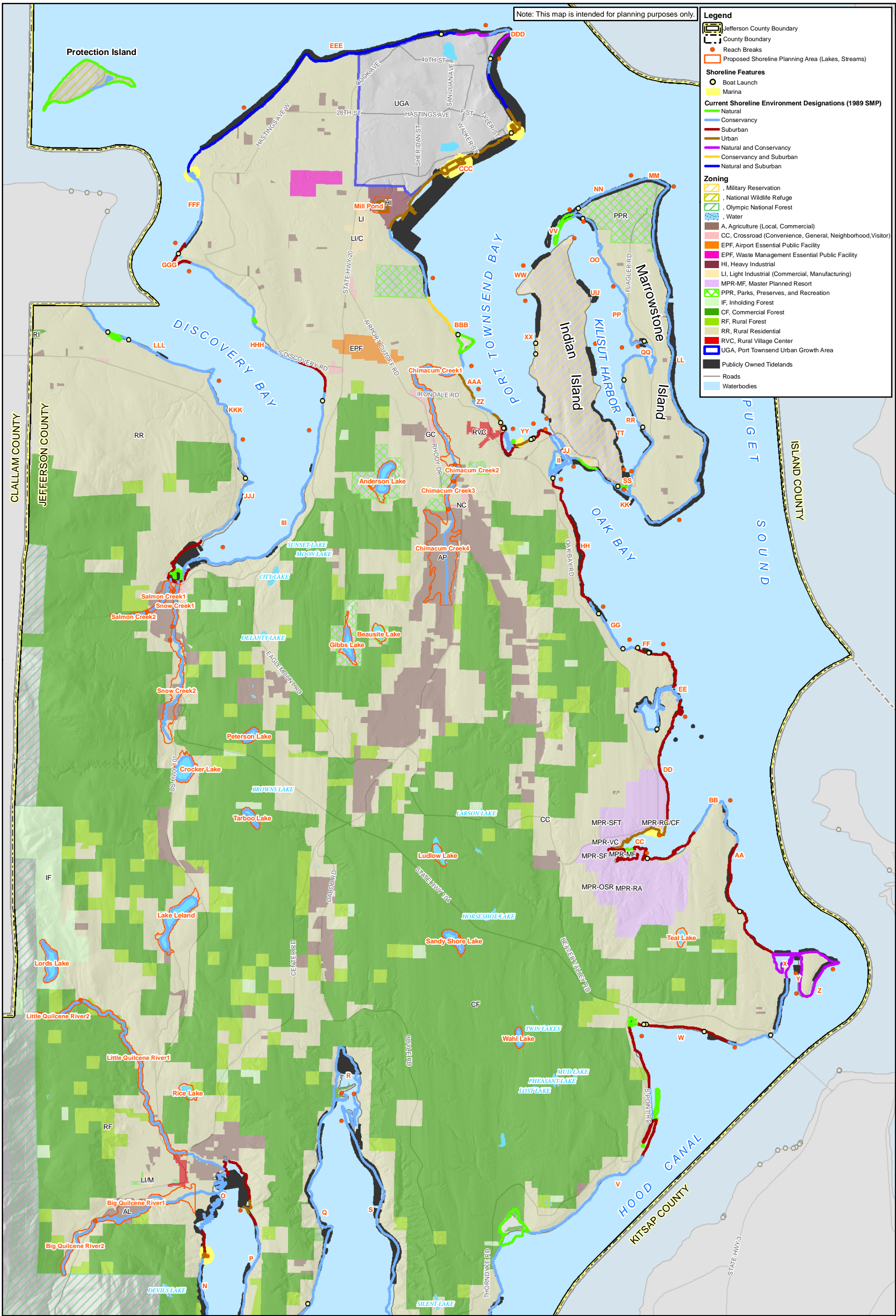
File name: Map16_ESA_W.pdf
Created/last edited by: AMB
Date last updated: 06/13/08

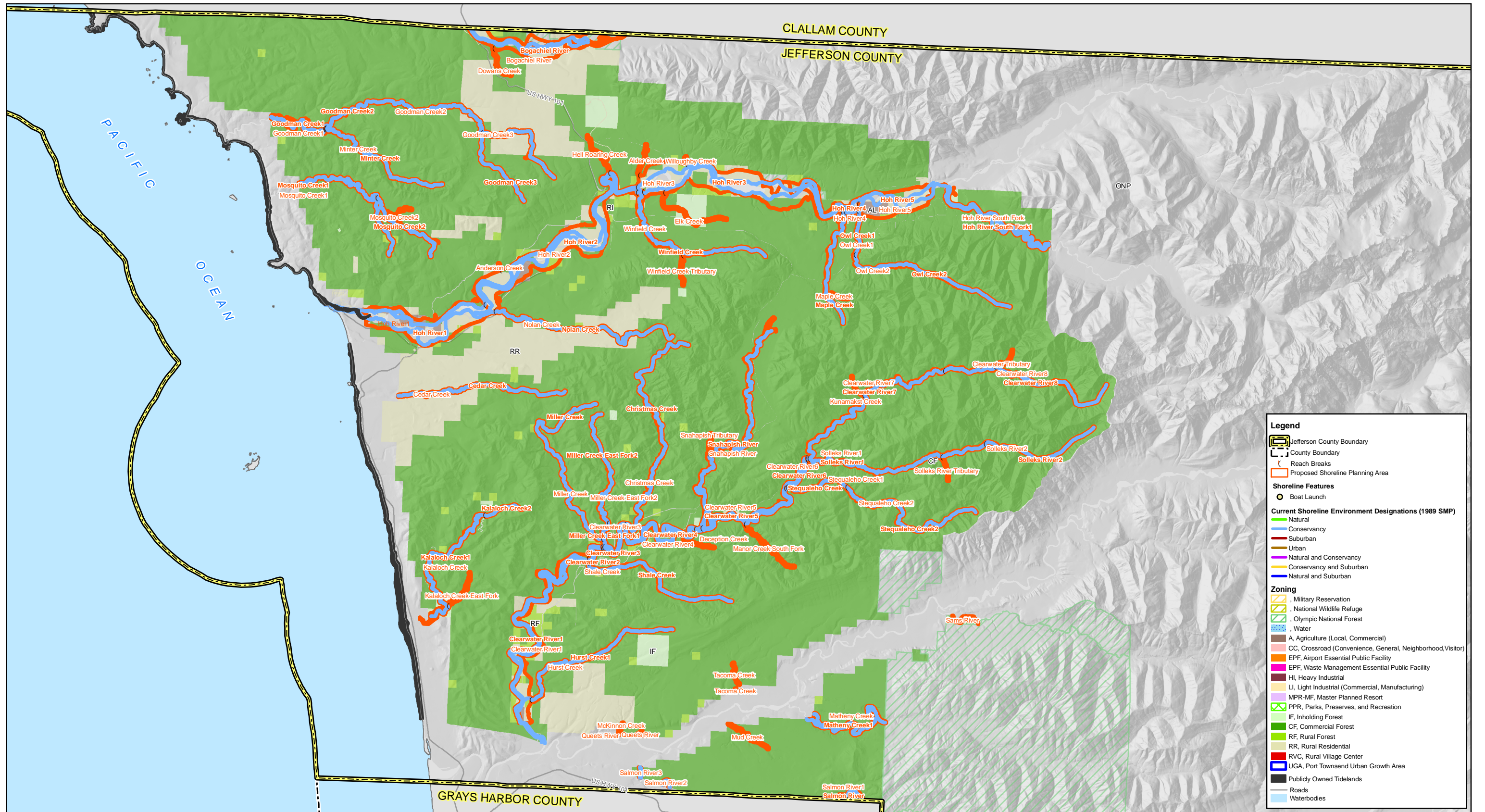


Map data are the property of the sources listed below.
Inaccuracies may exist, and ESA Adolfson implies no
warranties or guarantees regarding any aspect of data depiction.
SOURCE: Jefferson County GIS, 2005; WDNR, 2007; FEMA, 1998

Note: Shorelines of the state are based on 20 cfs limits from USGS (1998).







Legend

Jefferson County Boundary
County Boundary
Reach Breaks
Proposed Shoreline Planning Area

Shoreline Features


Boat Launch

Current Shoreline Environment Designations (1989 SMP)

Natural
Conservancy
Suburban
Urban
Natural and Conservancy
Conservancy and Suburban
Natural and Suburban

Zoning

Military Reservation
National Wildlife Refuge
Olympic National Forest
Water
A, Agriculture (Local, Commercial)
CC, Crossroad (Convenience, General, Neighborhood, Visitor)
EPF, Airport Essential Public Facility
EPF, Waste Management Essential Public Facility
HI, Heavy Industrial
LI, Light Industrial (Commercial, Manufacturing)
MPR-MF, Master Planned Resort
PPR, Parks, Preserves, and Recreation
IF, Inholding Forest
CF, Commercial Forest
RF, Rural Forest
RR, Rural Residential
RVC, Rural Village Center
UGA, Port Townsend Urban Growth Area
Publicly Owned Tidelands
Roads
Waterbodies



File name: Map23_LandUse_W.pdf
Created/last edited by: AMB
Date last updated: 06/13/08

Map data are the property of the sources listed below.
Inaccuracies may exist, and ESA Adolfson implies no
warranties or guarantees regarding any aspect of data depiction.
SOURCE: Jefferson County GIS, 2005

0 0.5 1 2 3
Miles

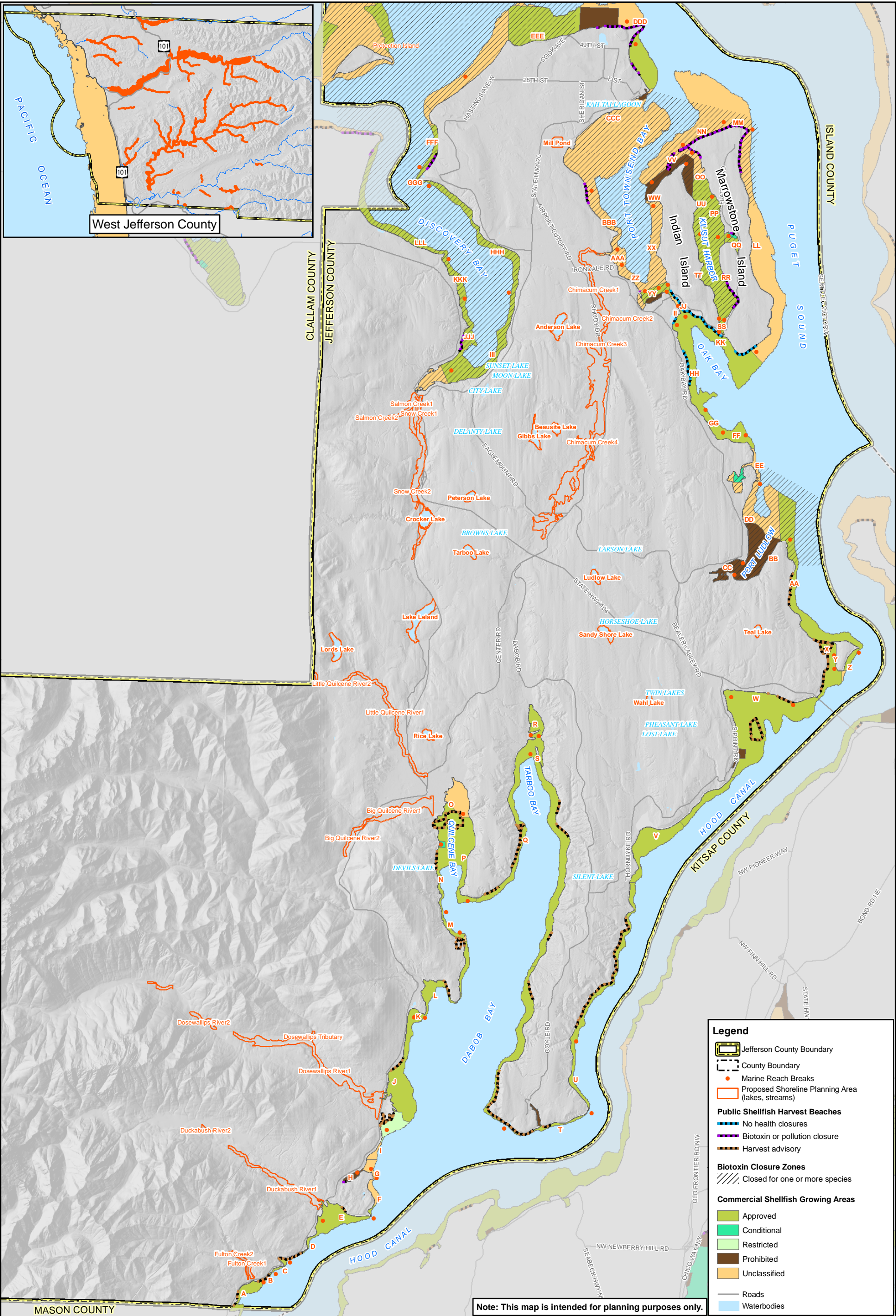
MAP 23

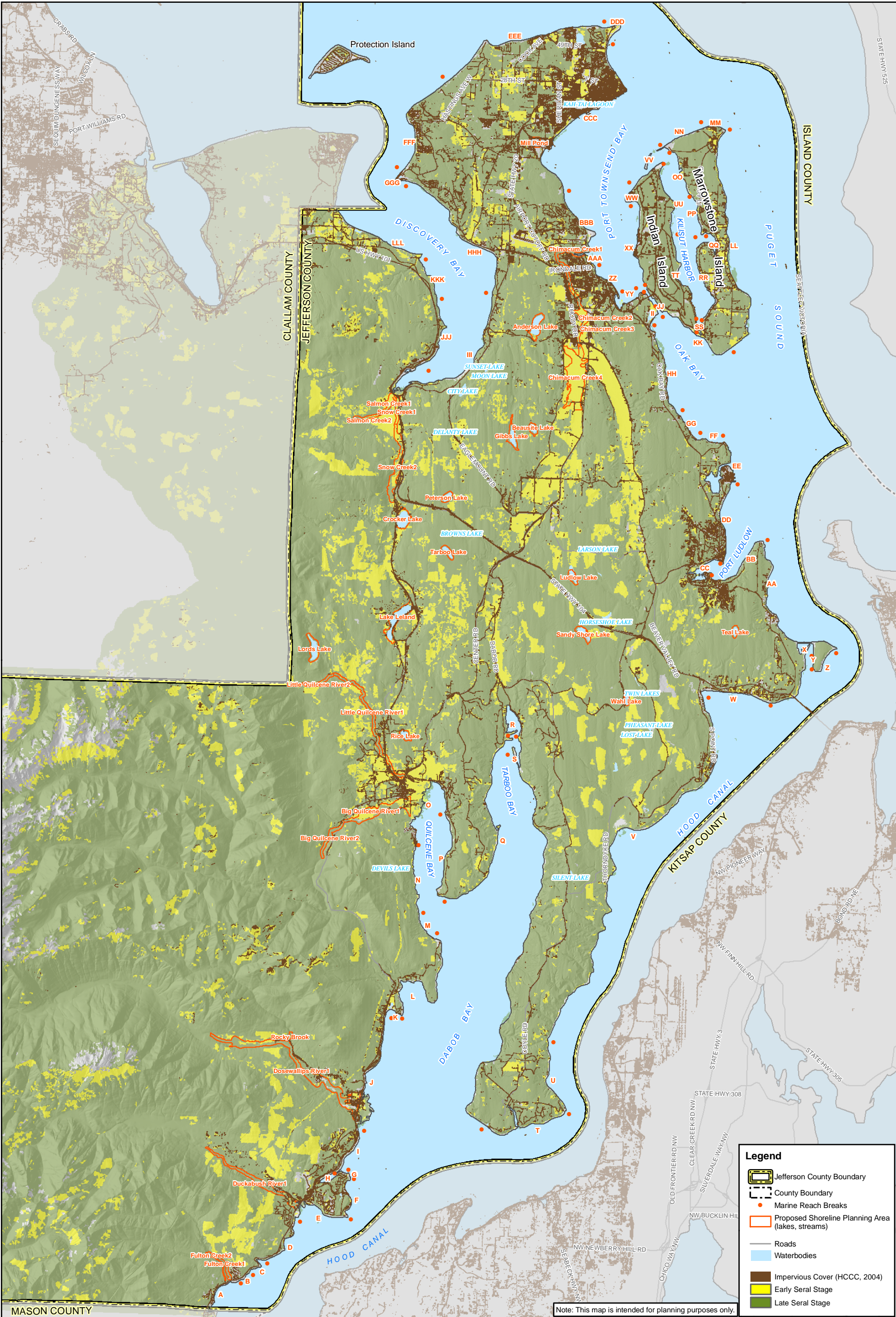
LAND AND SHORELINE USE PATTERNS - WEST JEFFERSON COUNTY

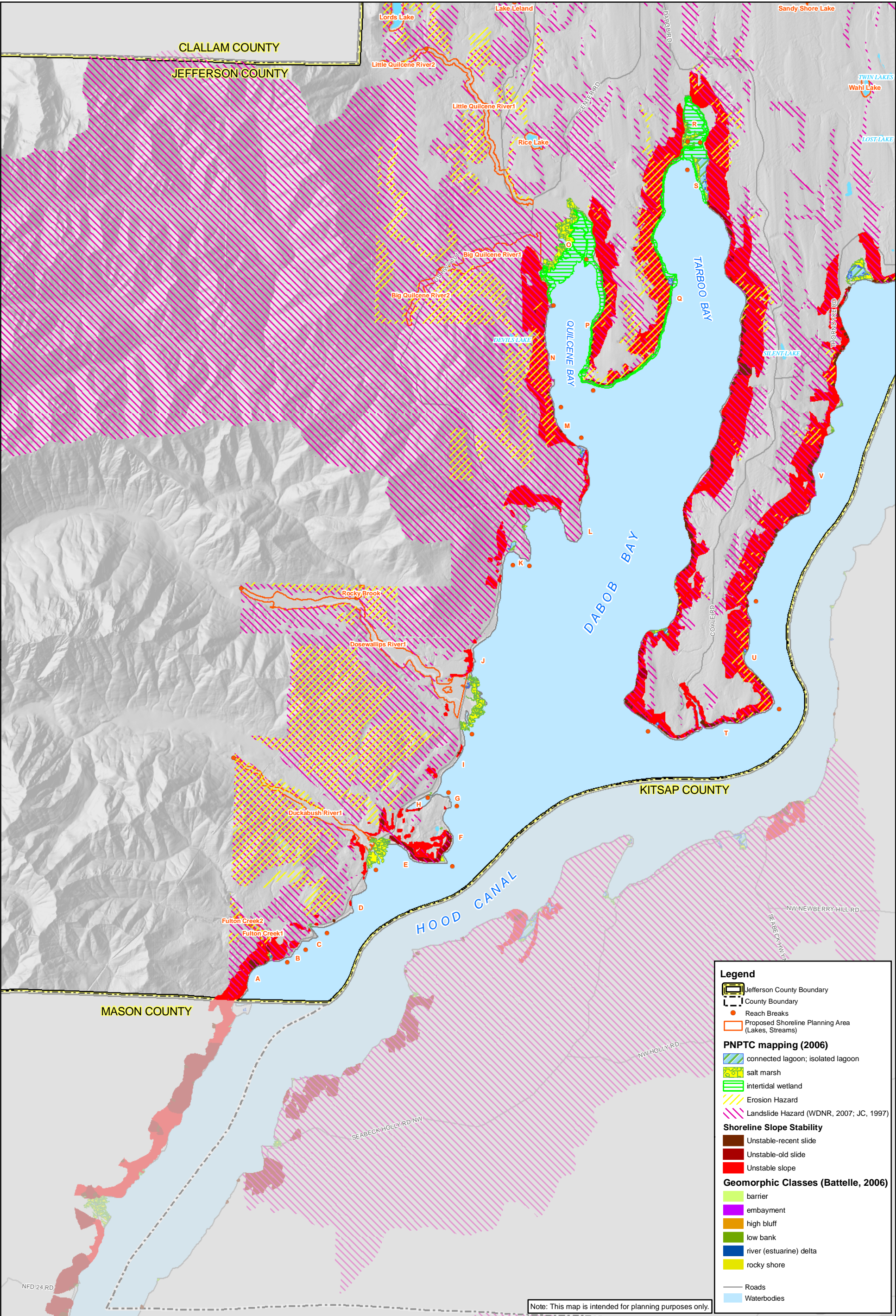
JEFFERSON COUNTY SHORELINE MAP FOLIO

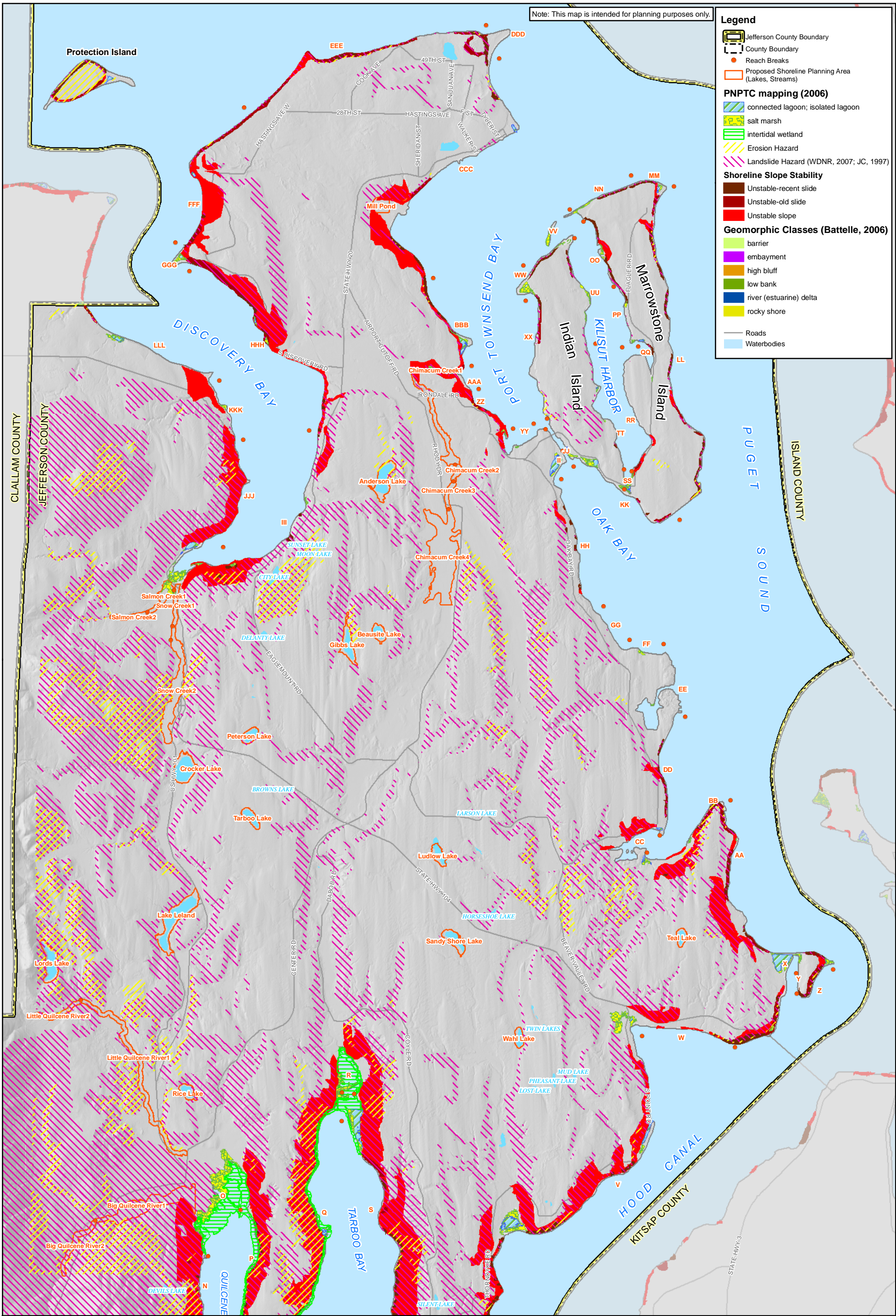
JUNE, 2008

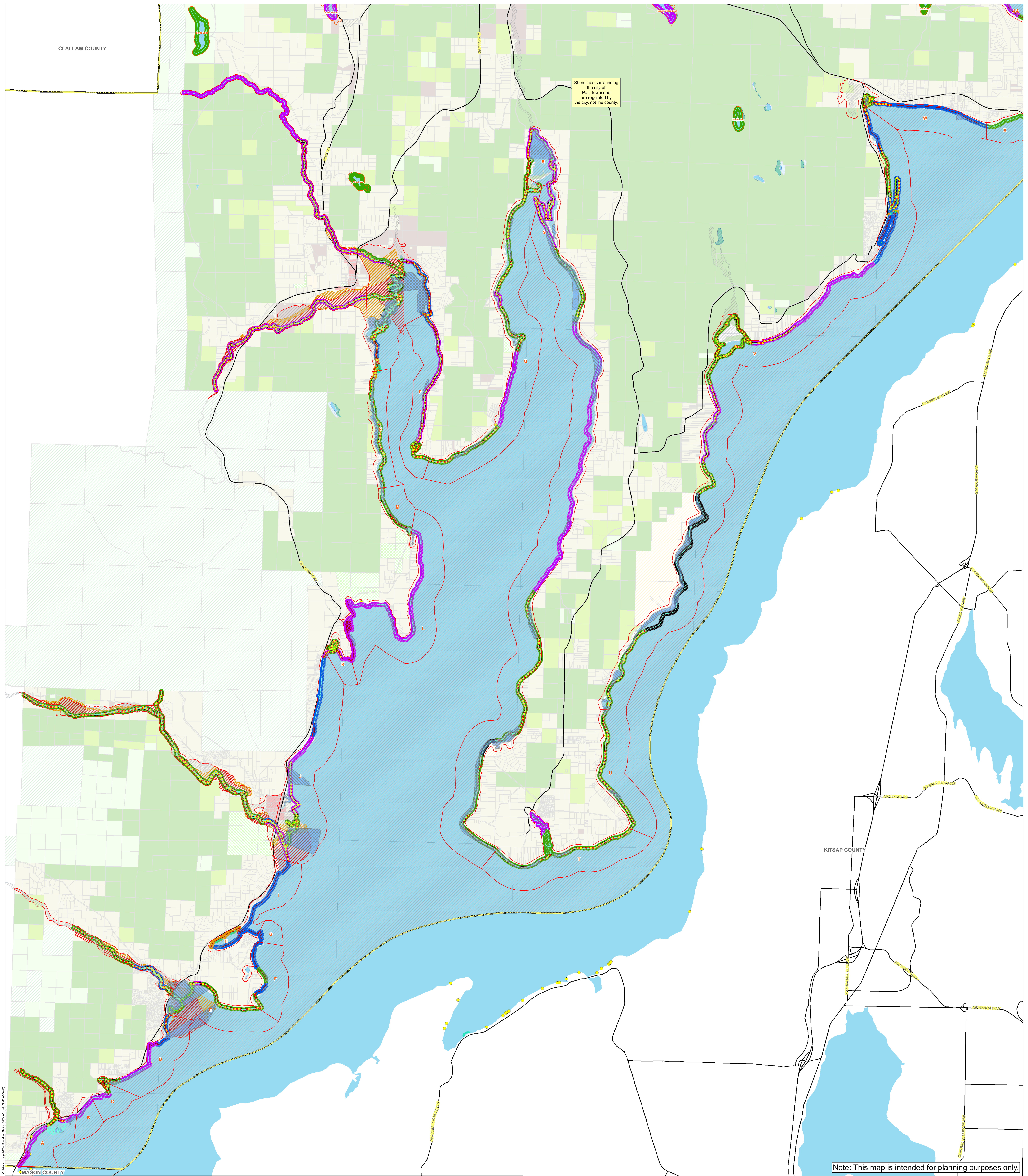
Note: Shorelines of the state are based on 20 cfs limits from USGS (1998).











Legend

Jefferson County
Other Counties
Parcels
ABC Shoreline Planning Areas
Major Roads
Boat Launch
Marinas
Publicly Owned Tidelands
Lakes
Ocean and Shores

Proposed SEDs (Feb2008)

Conservancy
High Intensity
Natural
Shoreline Residential
NA

Channel Migration Zones

High
Moderate
FEMA Floodplain

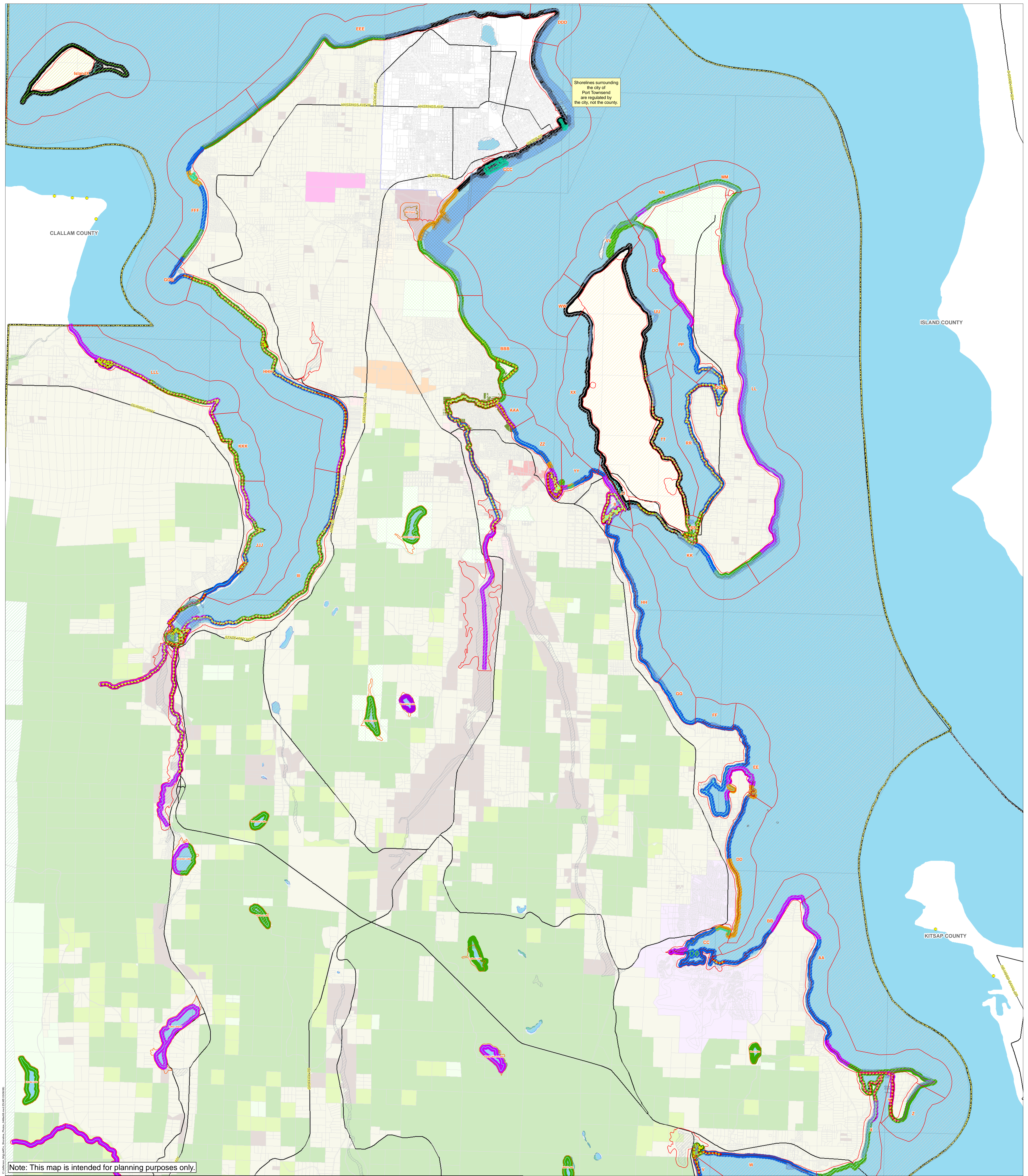
STAC Recommendations (11/29/07)

Priority Aquatic
National Wildlife Refuge
Olympic National Forest
Water
AL, AP: Agriculture (Local, Commercial)
CC, GC, NC: Crossroad (Convenience, General, Neighborhood/Visitor)
EPF: Airport Essential Public Facility
EPF: Waste Management Essential Public Facility
HI: Heavy Industrial

Zoning

LI: Light Industrial (Commercial, Manufacturing)
MPR: Master Planned Resort
PPR: Parks, Preserves, and Recreation
IF: Inholding Forest
CF, RI: Commercial Forest, Forest Resource-Based Industrial
RF: Rural Forest
RR: Rural Residential
RVC: Rural Village Center
UGA: Port Townsend Urban Growth Area
Public Lands (Updated 12/19/07)





Legend

Jefferson County
Other Counties
Parcels
ABC Shoreline Planning Areas
Major Roads
Boat Launch
Marinas
Publicly Owned Tidelands
Lakes
Ocean and Shores

Proposed SEDs (Feb2008)

Conservancy
High Intensity
Natural
Shoreline Residential
NA

Channel Migration Zones

High
Moderate
FEMA Floodplain

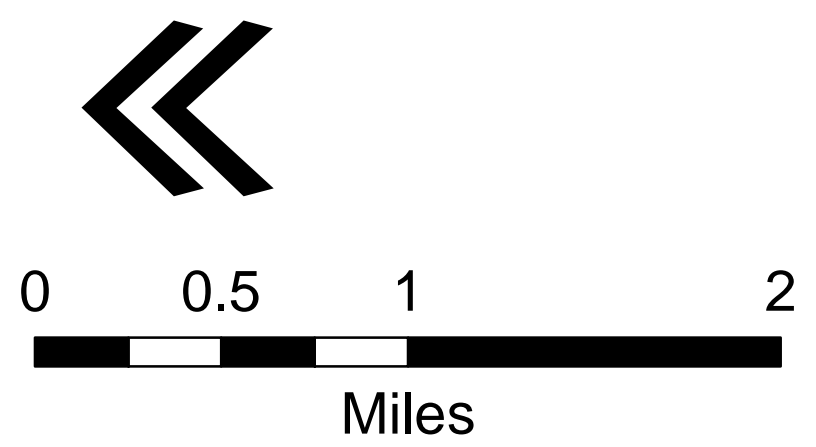
STAC Recommendations (11/29/07)

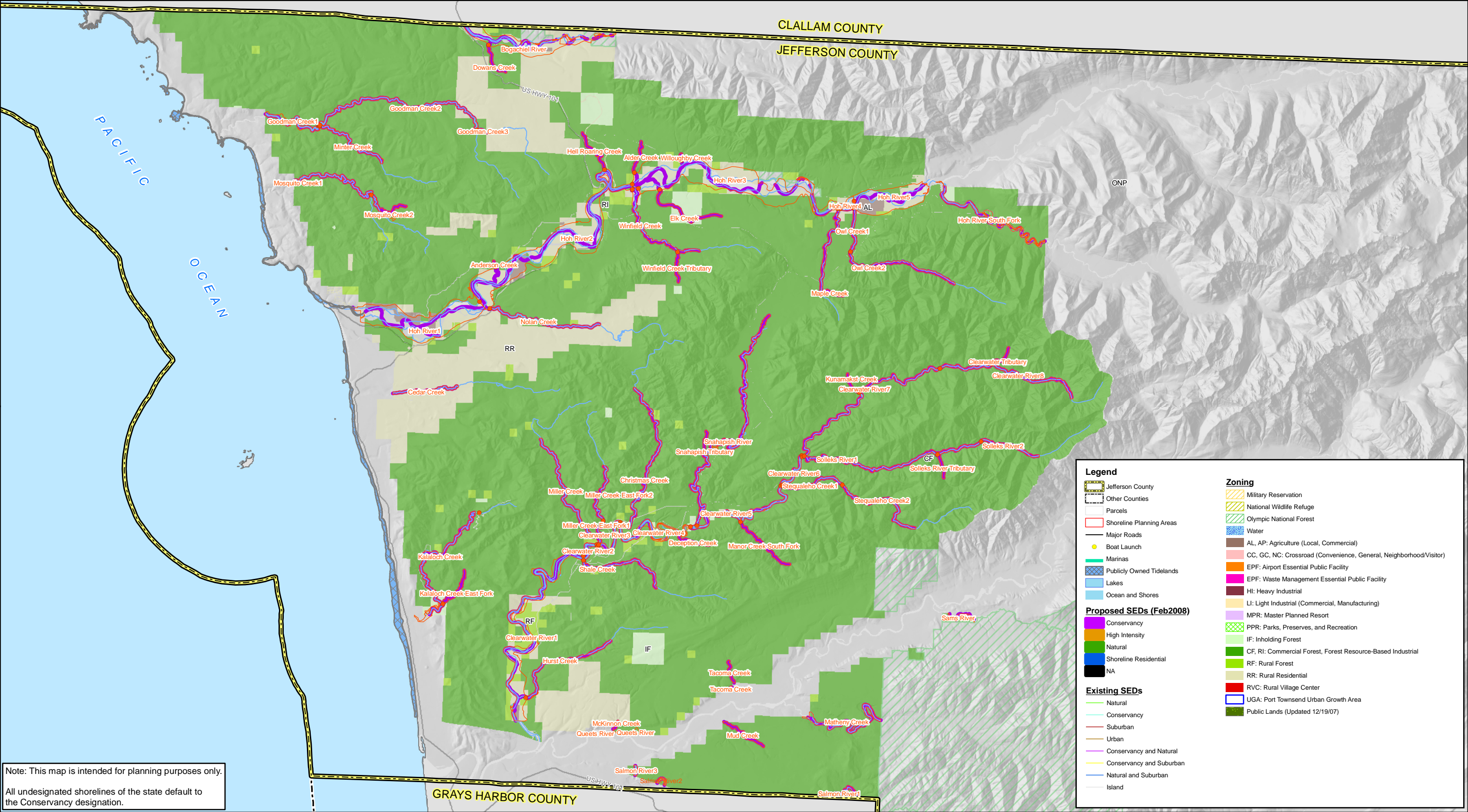
Priority Aquatic
Existing SEDs
Natural
Conservancy
Suburban
Urban
Conservancy and Natural
Conservancy and Suburban
Natural and Suburban
Island

Zoning

LI: Light Industrial (Commercial, Manufacturing)
MPR: Master Planned Resort
PPR: Parks, Preserves, and Recreation
IF: Inholding Forest
CF, RI: Commercial Forest, Forest Resource-Based Industrial
RF: Rural Forest
RR: Rural Residential
RVC: Rural Village Center
UGA: Port Townsend Urban Growth Area
Public Lands (Updated 12/19/07)

Military Reservation
National Wildlife Refuge
Olympic National Forest
Water
AL, AP: Agriculture (Local, Commercial)
CC, GC, NC: Crossroad (Convenience, General, Neighborhood/Visitor)
EPF: Airport Essential Public Facility
EPF: Waste Management Essential Public Facility
HI: Heavy Industrial





Note: This map is intended for planning purposes only.
All undesignated shorelines of the state default to the Conservancy designation.



File name: 31_ProposedSEDs_W.pdf
Created/last edited by: AMB
Date last updated: 06/13/08



0 0.5 1 2 3
Miles



Map data are the property of the sources listed below.
Inaccuracies may exist, and ESA Adolfson implies no warranties or guarantees regarding any aspect of data depiction.
SOURCE: Jefferson County GIS, 2005

Note: Shorelines of the state are based on 20 cfs limits from USGS (1998).