

Nippon Dynawave Industrial Incident

Community Air and Water Quality Monitoring

May 30, 2026



EPA Region 10

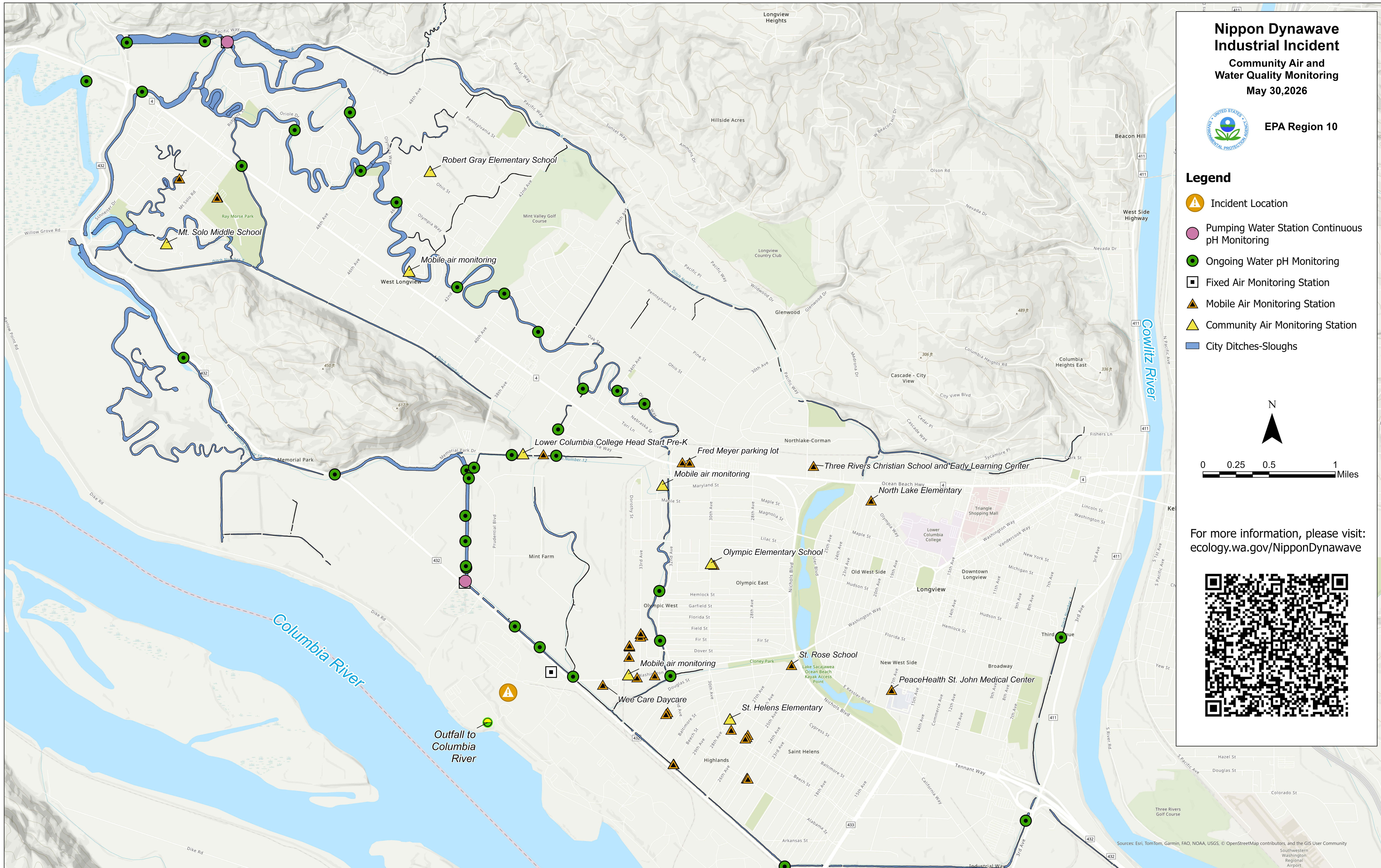
Legend

- Incident Location
- Pumping Water Station Continuous pH Monitoring
- Ongoing Water pH Monitoring
- Fixed Air Monitoring Station
- Mobile Air Monitoring Station
- Community Air Monitoring Station
- City Ditches-Sloughs



0 0.25 0.5 1 Miles

For more information, please visit:
ecology.wa.gov/NipponDynawave



Sources: Esri, TomTom, Garmin, FAO, NOAA, USGS, © OpenStreetMap contributors, and the GIS User Community
Southwestern Washington Regional Airport