

**ANNUAL PRE-TREATMENT PLAN  
FOR ZOSTERA JAPONICA CONTROL ON COMMERCIAL  
CLAM BEDS IN WILLAPA BAY  
FOR  
STATION HOUSE OYSTER**

**Submitted to:**

---

Washington Department of Ecology

March 1, 2015

**Author:**

David Beugli

WGHOGA Project Coordinator

## Annual Pre-Treatment Plan

The locations of acreage planned for treatment in 2015, including GPS coordinates of each corner of the area, size in acres of each area and cooperating adjacent land owners are shown in Table 1.

Table 1. Coordinates of the overall area where japonica control will be implemented. Actual acres to be treated will be less than those indicated by the overall bed boundaries.

Bed Name	Parcel	Acres	Corner Coordinates		Cooperating Landowners
			Latitude	Longitude	
D21	79004000021	10	46.4294	-124.0131	Heckes Clams Inc.
			46.4294	-124.0119	
			46.4202	-124.0112	
			46.4205	-124.0129	
TL51	12112755051	5	46.4993	-124.0289	
			46.4993	-124.0258	
			46.4981	-124.0262	
			46.4982	-124.0299	
TL592	11111555592	4.5	46.4439	-124.024	
			46.4454	-124.0191	
			46.4451	-124.019	
			46.4437	-124.0238	
E147	79005003147	5	46.6138	-124.0369	Wiegardt & Sons Inc.
			46.6138	-124.0343	
			46.6121	-124.0344	
			46.6121	-124.0369	
TL 601A, TL599	12110352601, 12110351599	1.5	46.5504	-124.0239	Taylor Resources
			46.5504	-124.0223	
			46.5496	-124.0223	
			46.5496	-124.0239	

## Annual Pre-Treatment Plan (Maps)

Figures 1-5 show the proposed locations of japonica treatments in 2015. No treatments occurred in 2014.



Figure 1. Parcel 79004000021.

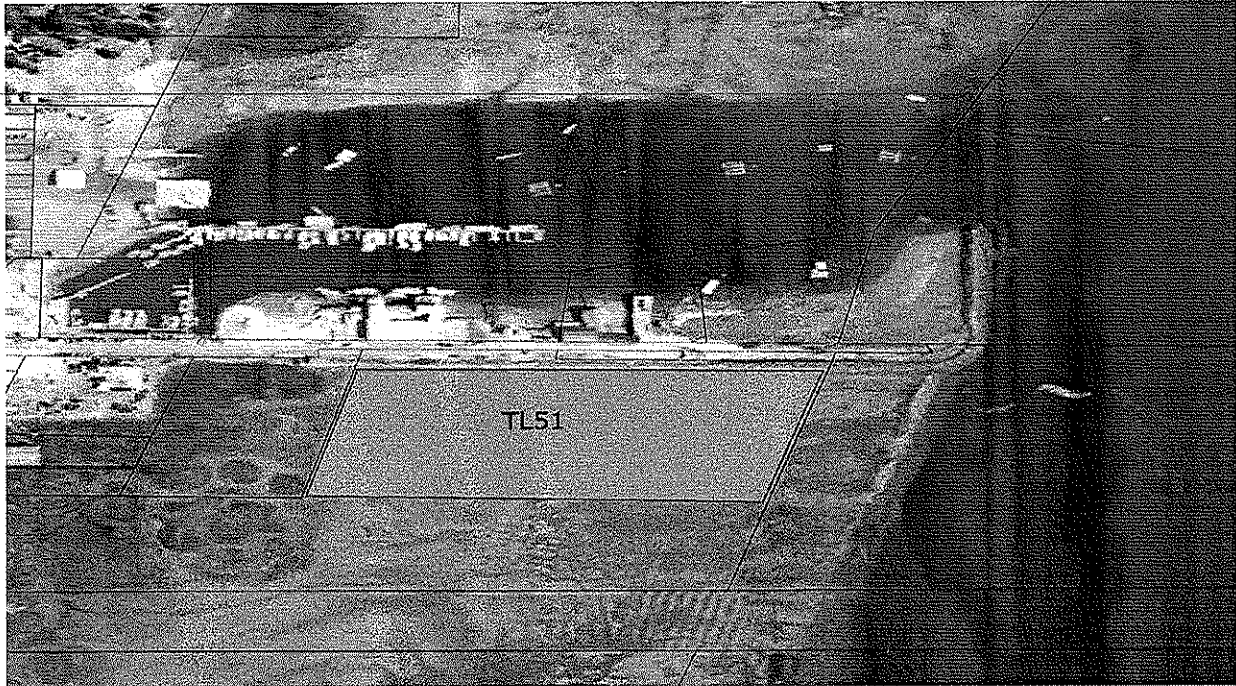


Figure 2. Parcel 12112755051.

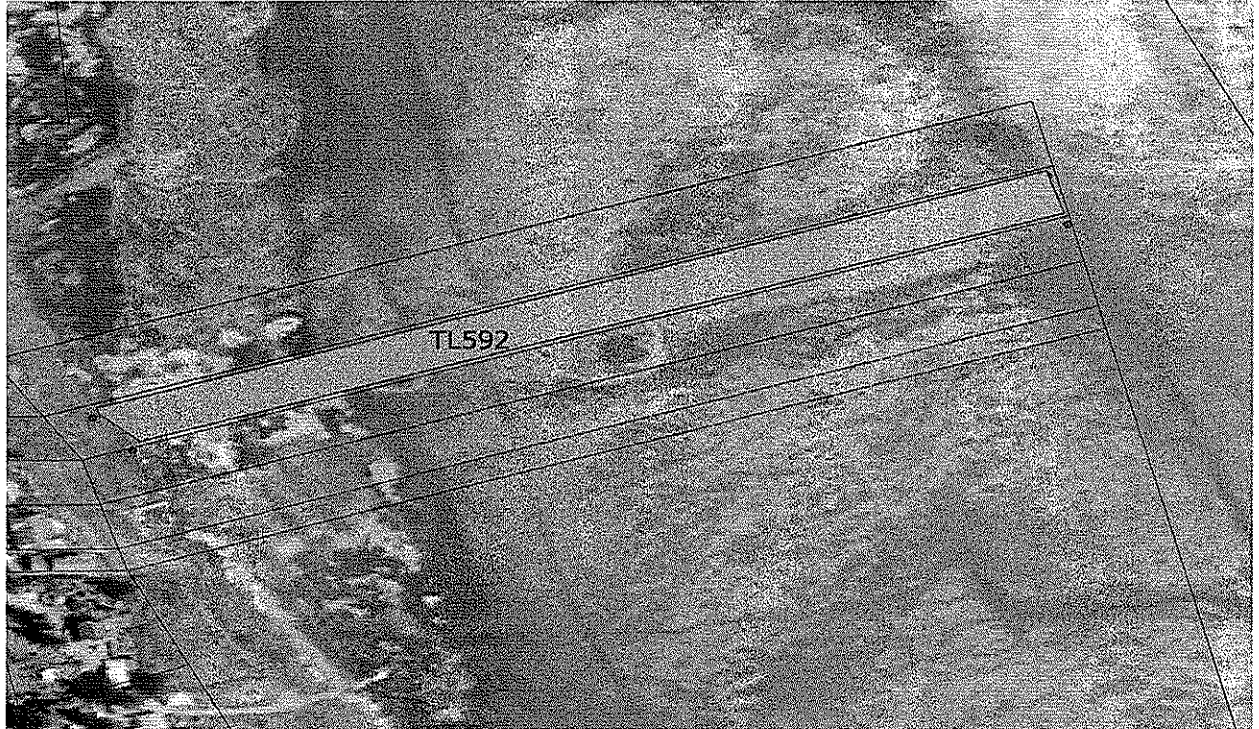


Figure 3. Parcel 11111555592.

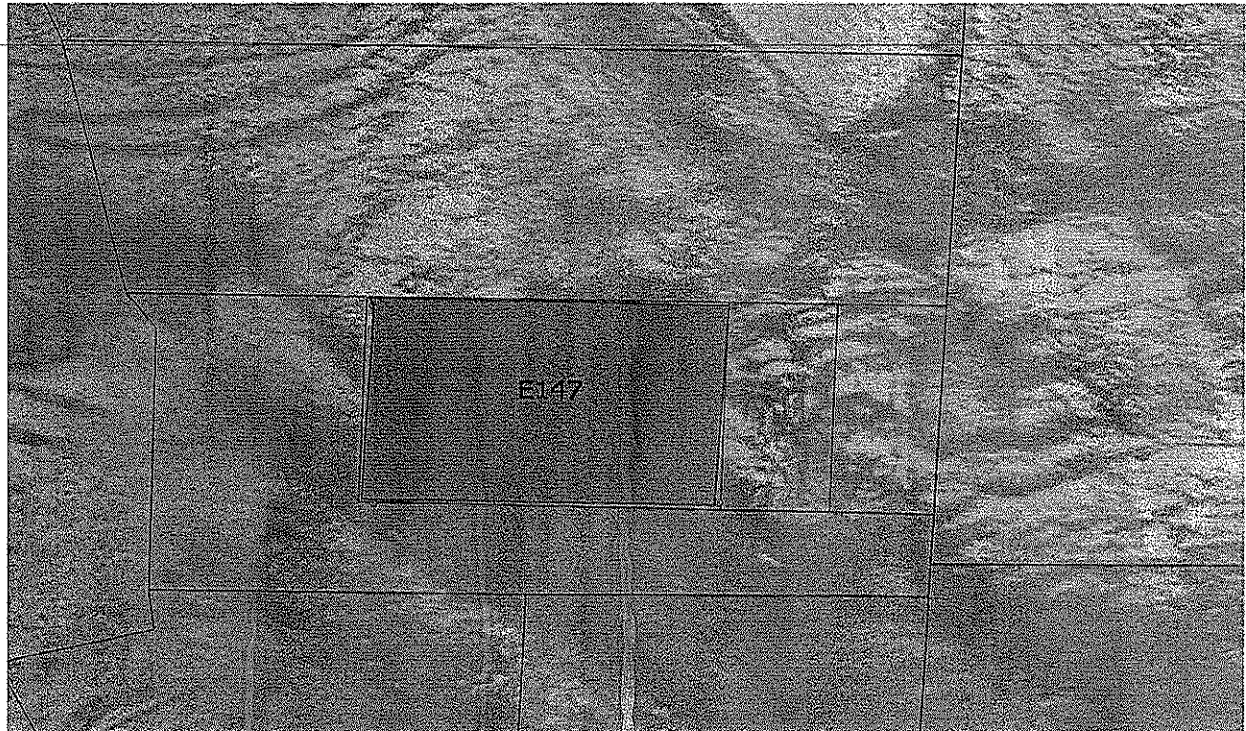


Figure 4. Parcel 79005003147.

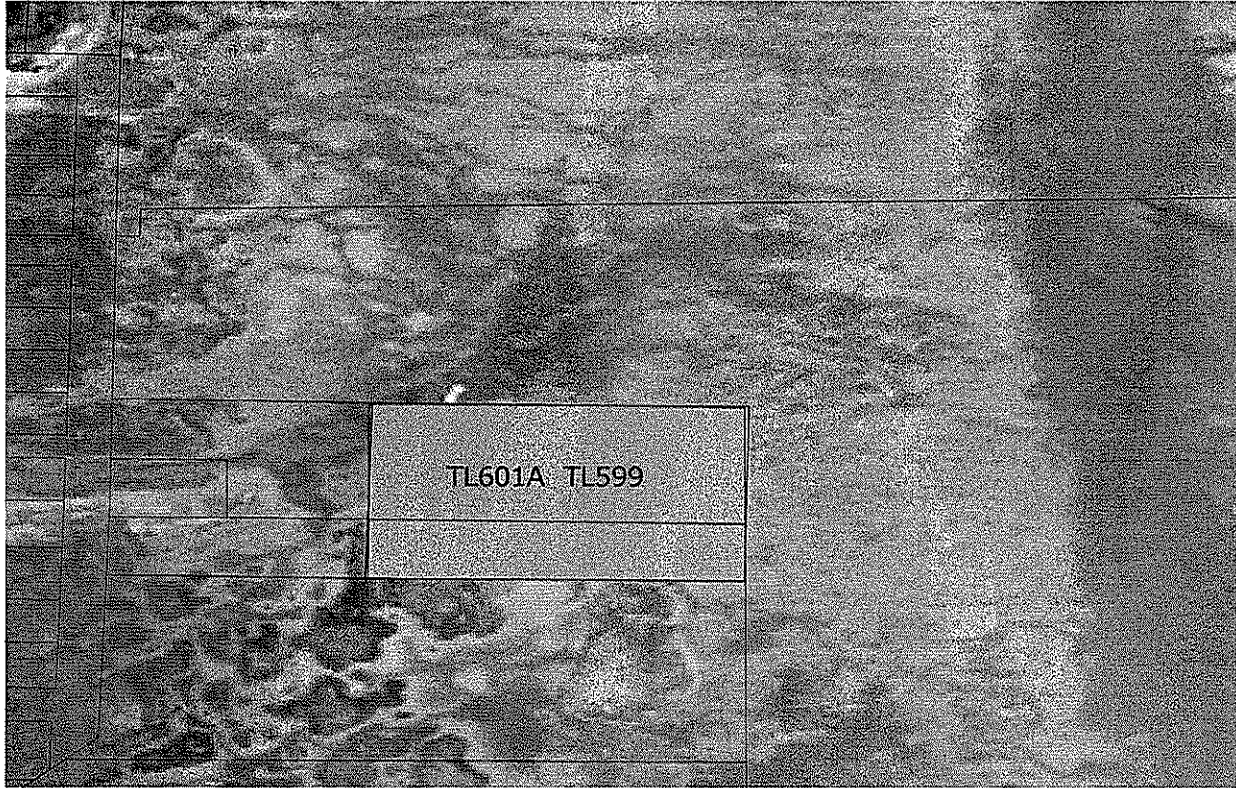


Figure 5. Parcels 12110352601, 12110351599.

## Signature Requirements

*I certify under penalty of law, that this document and all attachments were prepared under my direction or supervision in accordance with a system designed to assure that qualified personnel properly gathered and evaluated the information submitted. Based on my inquiry of those persons directly responsible for gathering information, the information in the Pretreatment Plan is, to the best of my knowledge and belief, true, accurate, and complete and will be updated as necessary. I am aware that there are significant penalties for submitting false information, including the possibility of fine and imprisonment of knowing violations.*

*[Handwritten Signature]*

*2-25-15*

Signature

Date