

DEPARTMENT OF ECOLOGY

MAR 04 2019

WATER QUALITY PROGRAM

**ANNUAL PRE-TREATMENT PLAN
FOR ZOSTERA JAPONICA CONTROL ON COMMERCIAL
CLAM BEDS IN WILLAPA BAY
FOR
HECKES CLAMS INC.**

Submitted to:

Washington Department of Ecology

February 28, 2019

Author:

David Beugli

WGHOGA

Annual Pre-Treatment Plan

The locations of acreage planned for treatment in 2018, including GPS coordinates of each corner of the area, size in acres of each area and cooperating adjacent land owners are shown in Table 1.

Table 1. Coordinates of the overall area where japonica control will be implemented. Actual acres to be treated will be less than those indicated by the overall bed boundaries.

| Bed Name | Parcel | Acres | Corner Coordinates | | Cooperating Landowners |
|-------------------|----------------------------|-------|--------------------|-----------|--------------------------|
| | | | Latitude | Longitude | |
| D56 | 79004000056 | 40 | 46.4052 | -123.9799 | |
| | | | 46.4030 | -123.9677 | |
| | | | 46.3978 | -123.9796 | |
| TL46 | 11111055046 | 15 | 46.4480 | -124.0215 | Weigardt & Sons Inc. |
| | | | 46.4466 | -124.0217 | Taylor Resources Inc. |
| | | | 46.4466 | -124.0201 | |
| | | | 46.4472 | -124.0191 | |
| | | | 46.4483 | -124.0193 | |
| E126 | 79005000126 | 10 | 46.5535 | -124.0249 | Taylor Resources Inc. |
| | | | 46.5535 | -124.0181 | |
| | | | 46.5524 | -124.0210 | |
| | | | 46.5524 | -124.0249 | |
| B122 | 79001000122 | 6 | 46.6205 | -123.9616 | |
| | | | 46.6205 | -123.9600 | |
| | | | 46.6191 | -123.9598 | |
| | | | 46.6192 | -123.9613 | |
| | | | 46.6185 | -123.9612 | |
| | | | 46.6184 | -123.9617 | |
| E231 | 79005003231 | 10 | 46.6099 | -124.0392 | Grassy Island Clam Farms |
| | | | 46.6098 | -124.0359 | Willapa Bay Shellfish |
| | | | 46.6088 | -124.0359 | Coast Seafoods |
| | | | 46.6083 | -124.0378 | Wiegardt & Sons Inc. |
| E78, E78 S 1/2 | 79005001078 79005010078 | 55 | 46.5601 | -124.0185 | Grassy Island Clam Farms |
| | | | 46.5601 | -124.0136 | Taylor Resources Inc. |
| | | | 46.5560 | -124.0136 | |
| | | | 46.5550 | -124.0138 | |
| | | | 46.5548 | -124.0183 | |

| | | | | | |
|-----------------|-----------------------------|----|---------|-----------|---------------------------|
| | | | 46.5073 | -124.0283 | Taylor Resources Inc. |
| | | | 46.5070 | -124.0264 | |
| | | | 46.5077 | -124.0261 | |
| TL604, TL619 | 12112255604 12112255619 | 21 | 46.5077 | -124.0237 | |
| | | | 46.5046 | -124.0249 | |
| | | | 46.0460 | -124.0272 | |
| | | | 46.5043 | -124.0219 | |
| | | | 46.4410 | -124.0213 | Don Graves |
| | | | 46.4412 | -124.0144 | Herrold Fish & Oyster Co. |
| | | | 46.4367 | -124.0142 | |
| | | | 46.4367 | -124.0189 | |
| D80, D81 | 79004000080 790040004081 | 80 | 46.4361 | -124.0206 | |
| | | | 46.4366 | -124.0141 | |
| | | | 46.4322 | -124.0140 | |
| | | | 46.4321 | -124.0161 | |
| | | | 46.4347 | -124.0166 | |
| | | | 46.4347 | -124.0204 | |
| | | | 46.4296 | -124.0179 | Long Island Oyster Co. |
| TL258 | 11112255258 | 70 | 46.4294 | -124.0132 | |
| | | | 46.4178 | -124.0127 | |
| | | | 46.4176 | -124.0167 | |
| | | | 46.4102 | -124.0019 | Coast Seafoods |
| D82 | 79004000082 | 20 | 46.4081 | -124.9944 | |
| | | | 46.4064 | -124.0000 | |
| | | | 46.4073 | -124.0051 | |
| | | | 46.4137 | -124.0004 | Coast Seafoods |
| | | | 46.4116 | -123.9990 | |
| D35 | 79004000035 | 5 | 46.4093 | -123.9939 | |
| | | | 46.4074 | -123.9885 | |
| | | | 46.4064 | -123.9891 | |
| | | | 46.4108 | -124.0243 | |

Annual Pre-Treatment Plan (Maps)

Figures 1-8 show the locations of proposed japonica treatments for 2019. In 2018 treatments occurred on beds TL604, TL619, TL46, TL258, D80, D81, and E231.

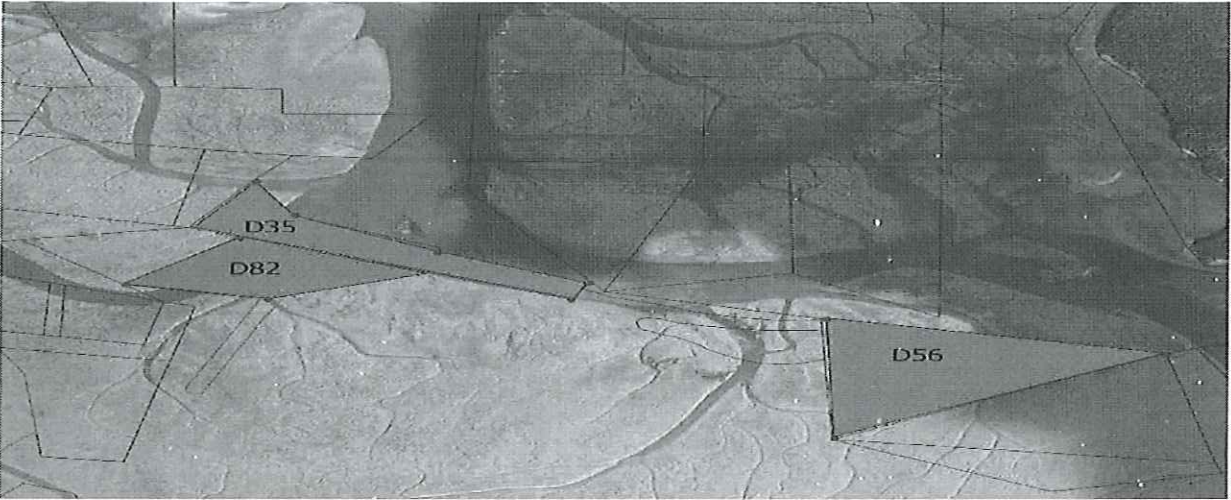


Figure 1. Parcels 79004000056, 79004000082, 79004000035.

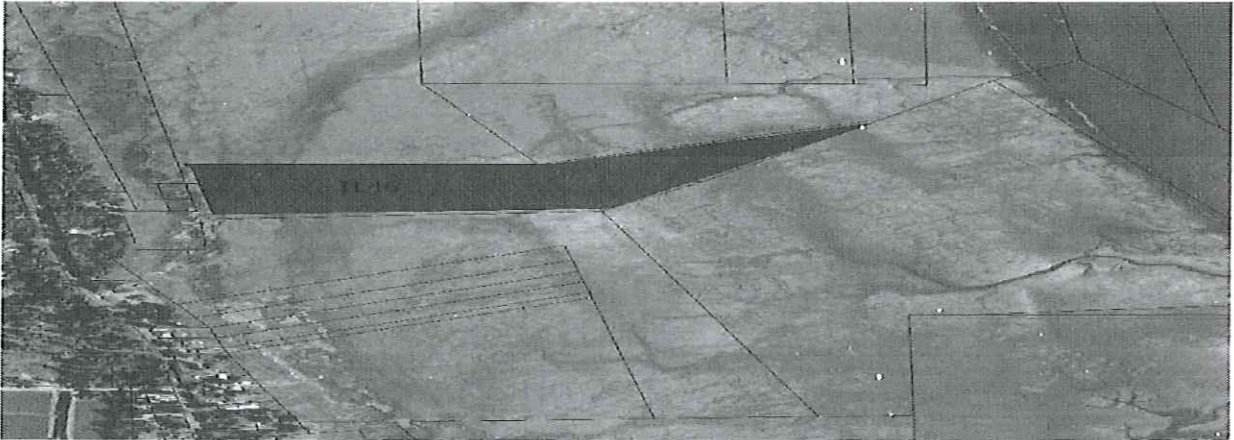


Figure 2. Parcel 11111055046

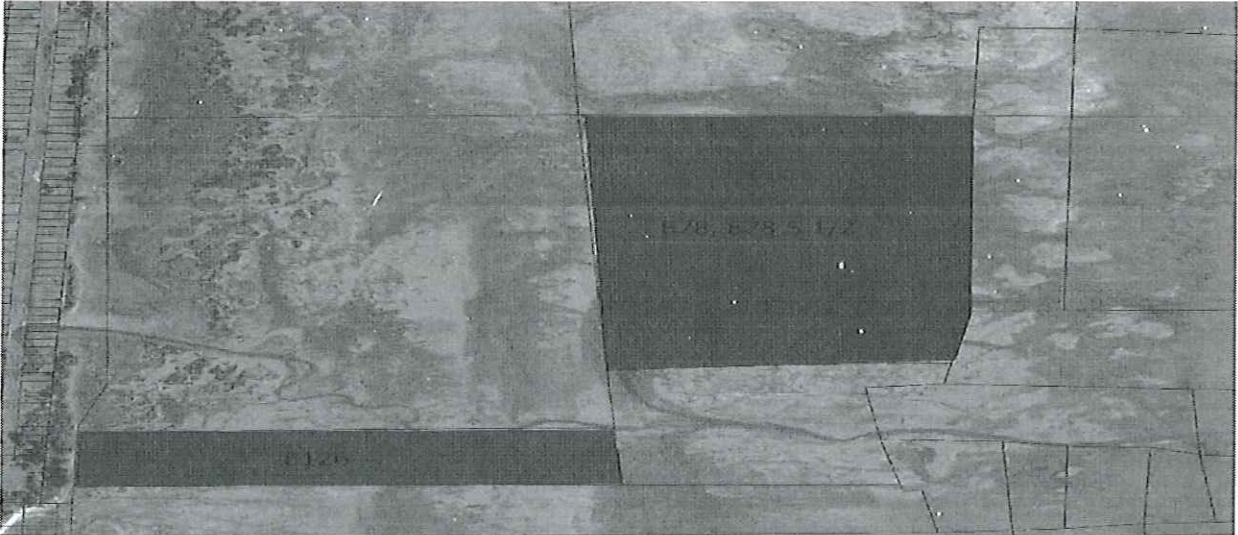


Figure 3. Parcels 79005000126, 79005001078, 79005010078.

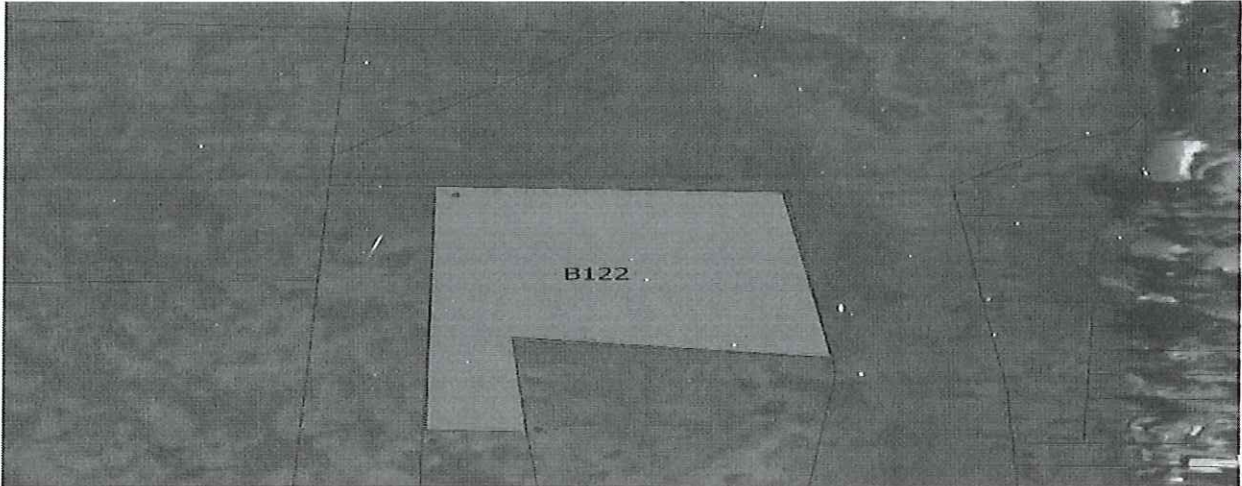


Figure 4. Parcel 79001000122.



Figure 5. Parcel 790050032231.

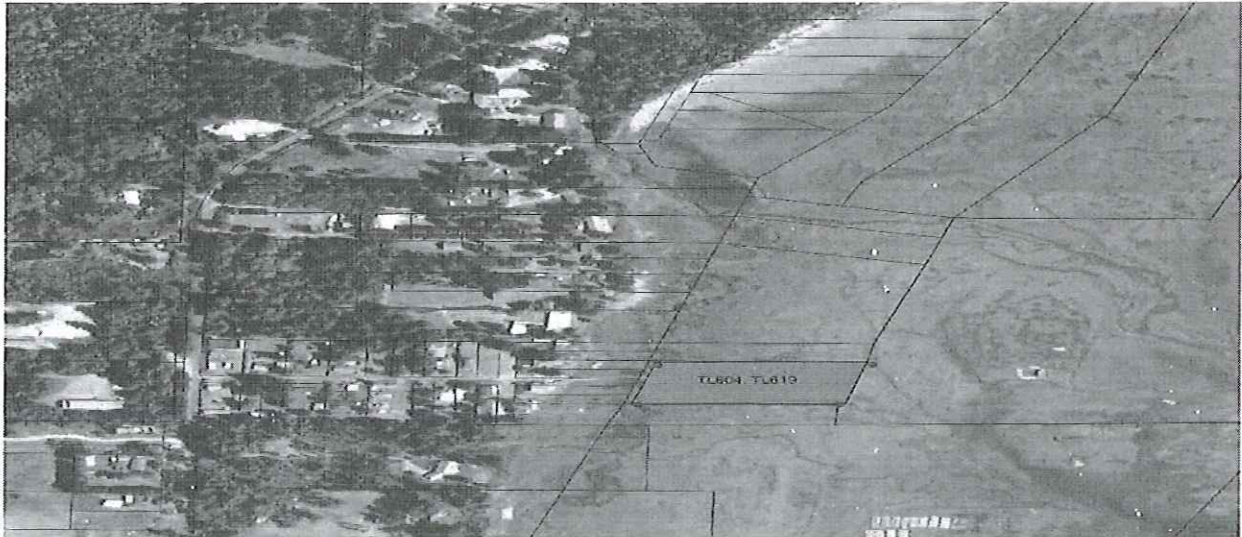


Figure 6. Parcels 12112255604, 12112255619.

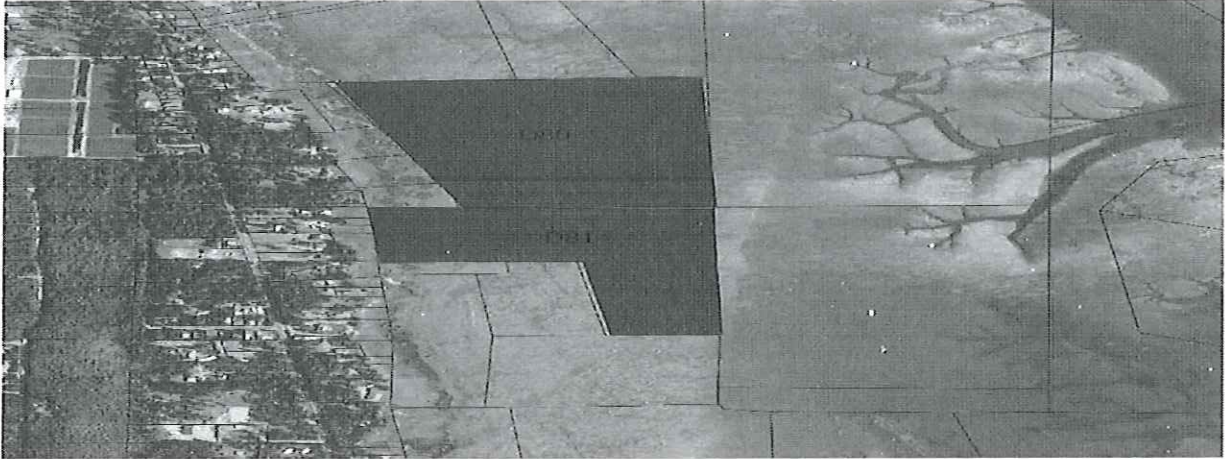


Figure 7. Parcels 79004000080, 79004004081

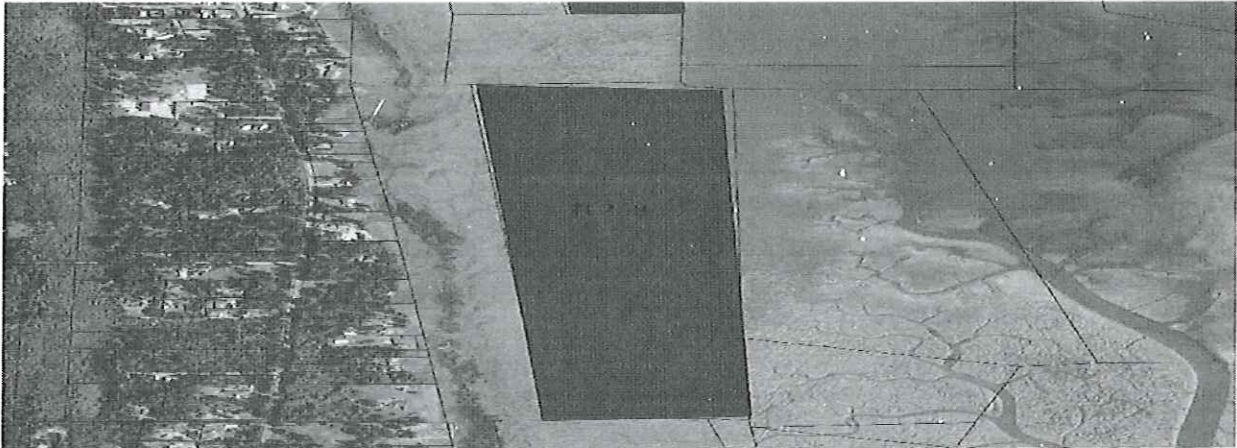



Figure 8. Parcel 1112255258.

Signature Requirements

I certify under penalty of law, that this document and all attachments were prepared under my direction or supervision in accordance with a system designed to assure that qualified personnel properly gathered and evaluated the information submitted. Based on my inquiry of those persons directly responsible for gathering information, the information in the Pretreatment Plan is, to the best of my knowledge and belief, true, accurate, and complete and will be updated as necessary. I am aware that there are significant penalties for submitting false information, including the possibility of fine and imprisonment of knowing violations.



Signature

2/28/19

Date

DEPARTMENT OF ECOLOGY
MAR 04 2019
WATER QUALITY PROGRAM