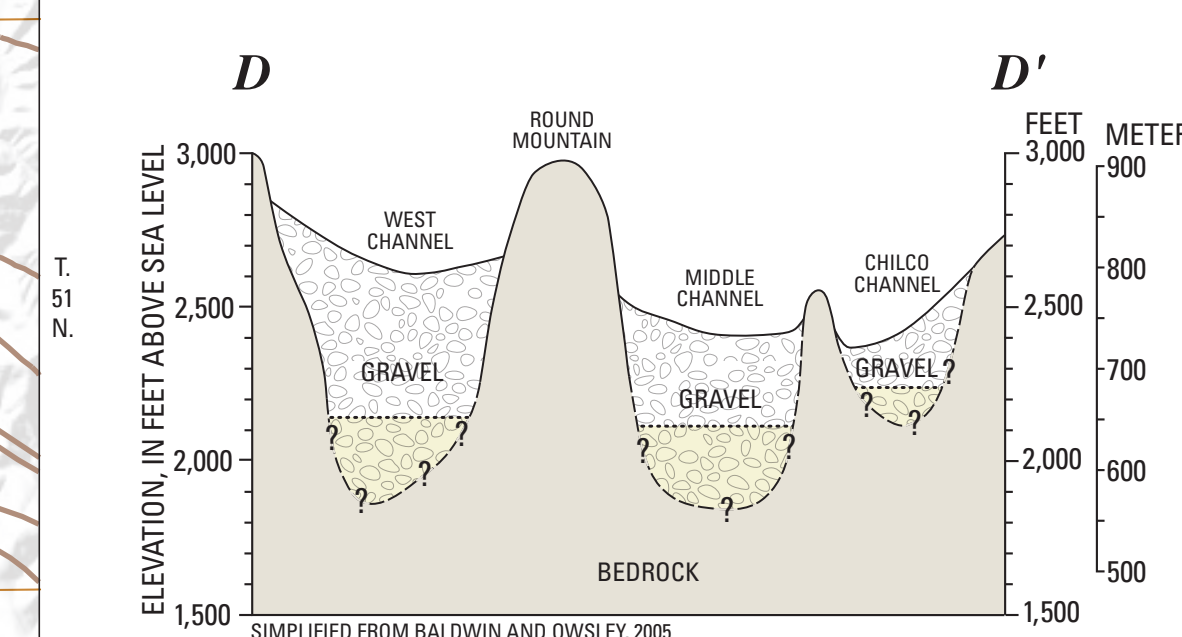
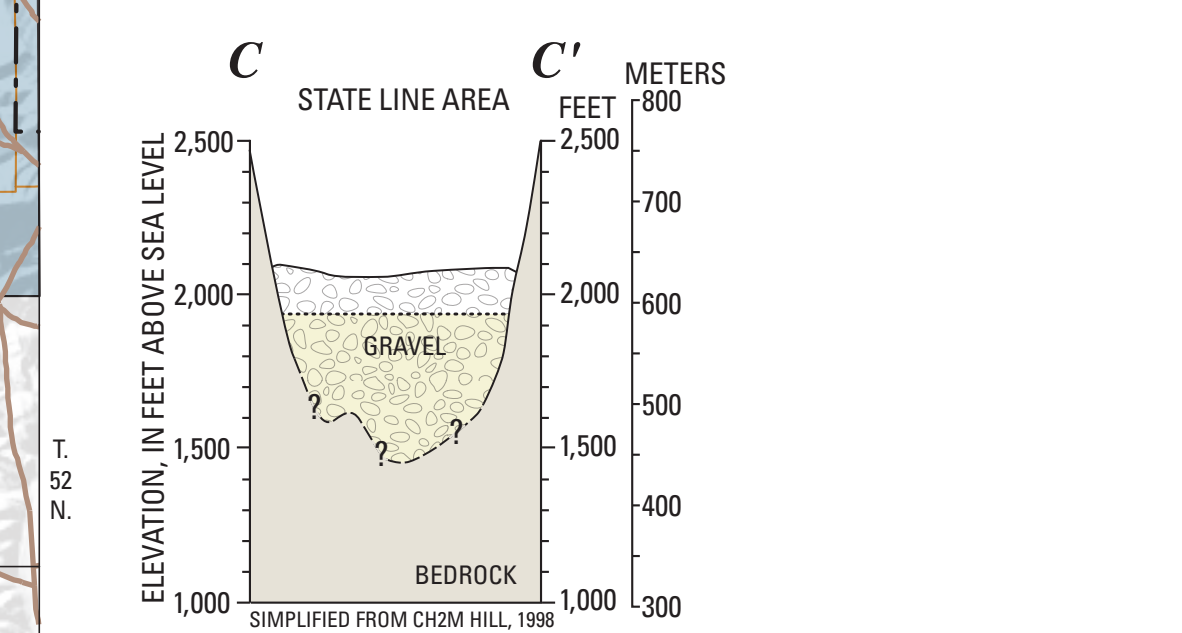
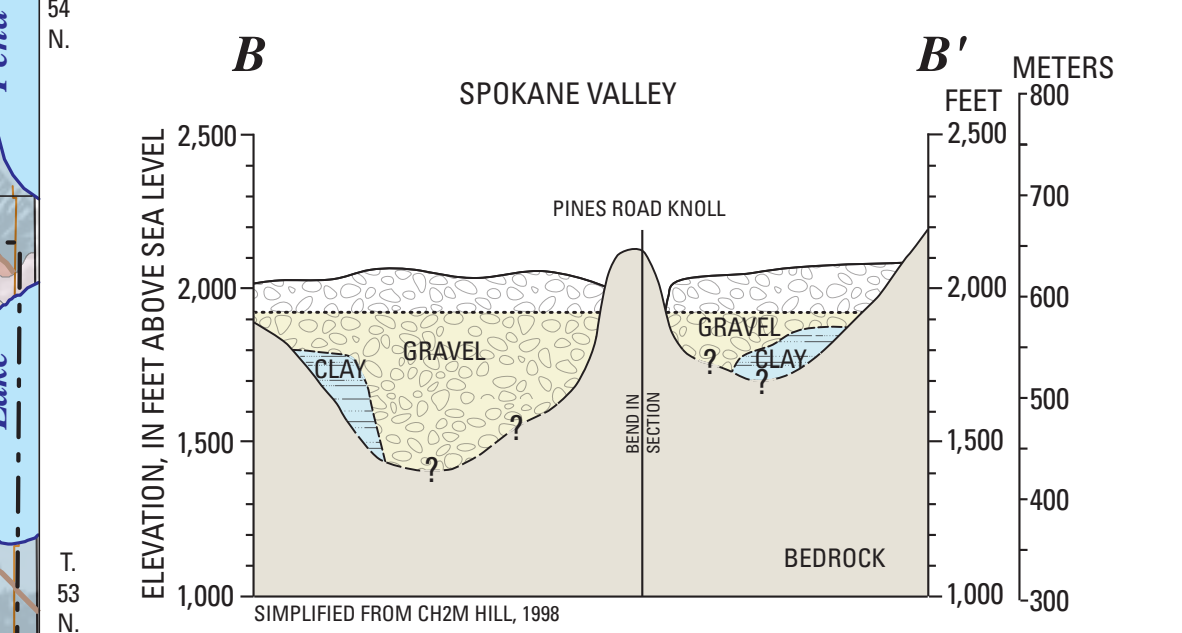
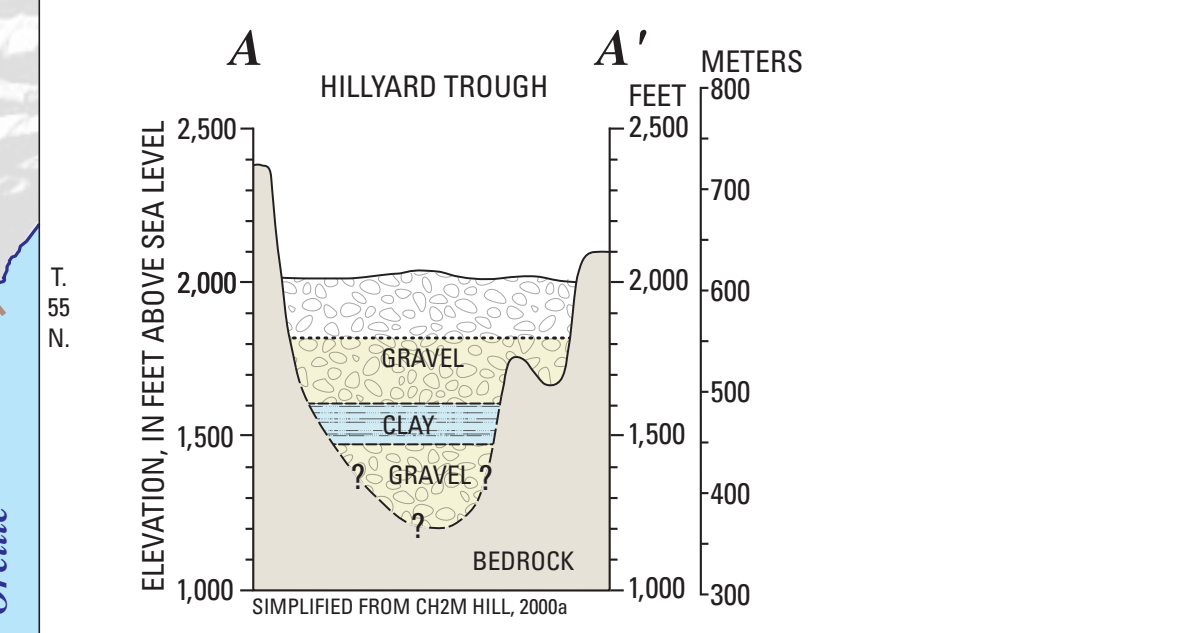


GENERALIZED HYDROGEOLOGIC SECTIONS OF THE SPOKANE VALLEY-RATHDRUM PRAIRIE AQUIFER



EXPLANATION

- GRAVEL, UNSATURATED / SATURATED
- CLAY AND SILT
- BEDROCK
- APPROXIMATE GEOLOGIC CONTACT, DASHED WHERE INFERRED
- APPROXIMATE POSITION OF WATER TABLE

SIMPLIFIED SURFICIAL GEOLOGY, GENERALIZED HYDROGEOLOGIC SECTIONS, AND SURFACE GEOPHYSICAL TRANSECTS, SPOKANE VALLEY-RATHDRUM PRAIRIE AQUIFER, WASHINGTON AND IDAHO

By S.C. Kahle, R.R. Caldwell, and J.R. Bartolino 2005

Base from U.S. Geological Survey digital file 100000100. Digitized from USGS Geologic Map of the Spokane Valley, Washington, Idaho, and Oregon, 1:250,000, 1954. Digitized from USGS Geologic Map of the Spokane Valley, Washington, Idaho, and Oregon, 1:250,000, 1954. Digitized from USGS Geologic Map of the Spokane Valley, Washington, Idaho, and Oregon, 1:250,000, 1954. Digitized from USGS Geologic Map of the Spokane Valley, Washington, Idaho, and Oregon, 1:250,000, 1954.