

**ANNUAL PRE-TREATMENT PLAN
FOR ZOSTERA JAPONICA CONTROL ON COMMERCIAL
CLAM BEDS IN WILLAPA BAY
FOR
WEIGARDT & SONS INC.**

Submitted to:

Washington Department of Ecology

March 1, 2015

Author:

David Beugli

WGHOGA Project Coordinator

Annual Pre-Treatment Plan

The locations of acreage planned for treatment in 2015, including GPS coordinates of each corner of the area, size in acres of each area and cooperating adjacent land owners are shown in Table 1.

Table 1. Coordinates of the overall area where japonica control will be implemented. Actual acres to be treated will be less than those indicated by the overall bed boundaries.

Bed Name	Parcel	Acres	Corner Coordinates		Cooperating Landowners
			Latitude	Longitude	
D91, D74, D4, D5, D6, D75, D76	79004000091 79004000074 79004000004 79004003075 79004001075 79004003004	85	46.4538	-124.0268	Heckes Clams Inc.
			46.4539	-124.0194	
			46.4636	-124.0195	
			46.4634	-124.0259	
D51	79004000051	20	46.4502	-124.0211	Taylor Resources Inc.
			46.4502	-124.0142	Heckes Clams Inc.
			46.4492	-124.0148	
			46.4480	-124.0195	
TL67, TL380A	13112255067 13112755380	90	46.5952	-124.0341	
			46.5956	-124.0302	
			46.5942	-124.0240	
			46.5845	-124.0202	
D103 N 1/2, D103 S 1/2, D72, D108	79004001103 79004003103 79004000072 79004000108	35	46.5843	-124.0251	
			46.5902	-124.0289	
			46.4885	-123.9940	
			46.4883	-123.9930	
			46.4729	-123.9949	
D110A, TL499, D92, D110B	79004000092	5	46.4698	-123.9947	
			46.4698	-123.9942	
			46.4788	-124.0267	Grassy Island Clam Farms
			46.4788	-124.0256	Willapa Bay Shellfish
			46.4727	-124.0238	
			46.4728	-124.0265	
			46.4773	-124.0269	
			46.4733	-124.0266	

			46.6061	-124.0382	Heckes Clams Inc.
			46.6061	-124.0351	Coast Seafoods
			46.6068	-124.0359	Stackpole Harbor LLC.
			46.6083	-124.0378	Taylor Resources Inc.
			46.6097	-124.0330	Grassy Island Clam Farms
			46.6074	-124.0330	
E94, E228,	79005000232		46.6079	-124.0310	
E108, E232,	79005000108	30	46.6044	-124.0290	
E94, E79, E3	790500179		46.6044	-124.0290	
	7900500179		46.6035	-124.0320	
	79005003003		46.6033	-124.0284	
			46.5984	-124.0256	
			46.5981	-124.0333	
			46.6024	-124.0345	
			46.6039	-124.0374	

Annual Pre-Treatment Plan (Maps)

Figure 1-5 shows the locations of proposed japonica treatments for 2015. In 2014 treatments occurred on beds D4, D75 and TL67.

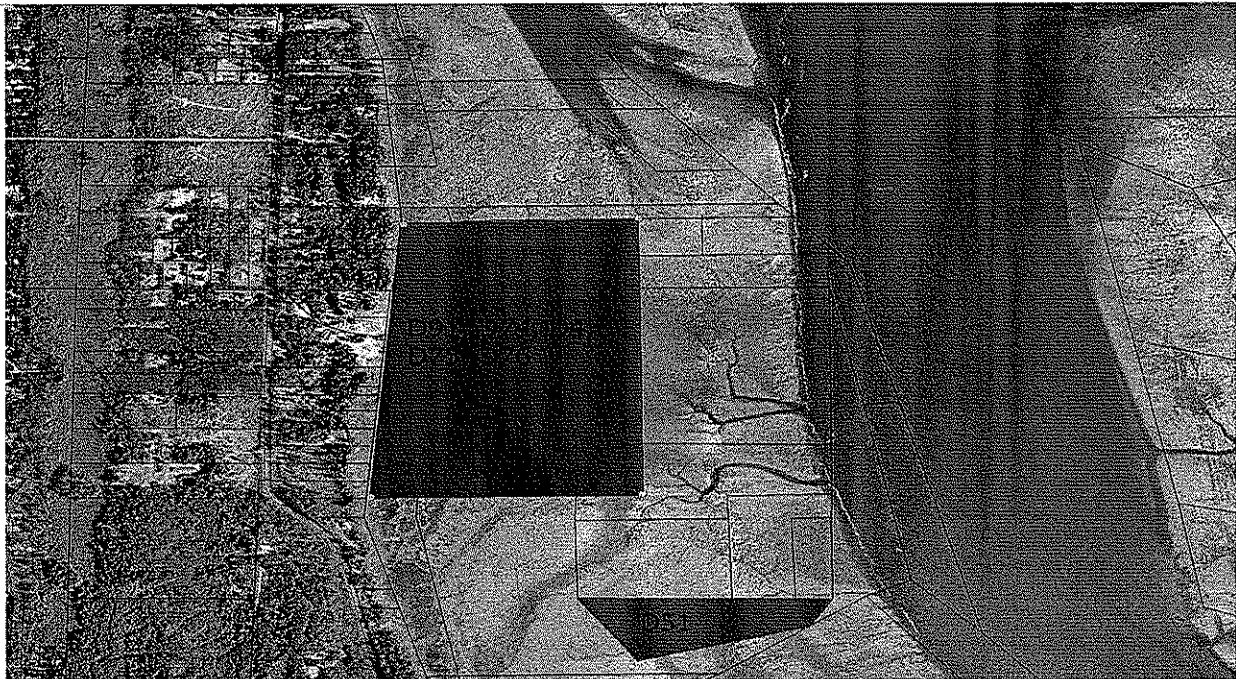


Figure 1. Parcels 79004000091, 79004000074, 79004000004, 79004003075, 79004001075, 79004003004, 79004000051.

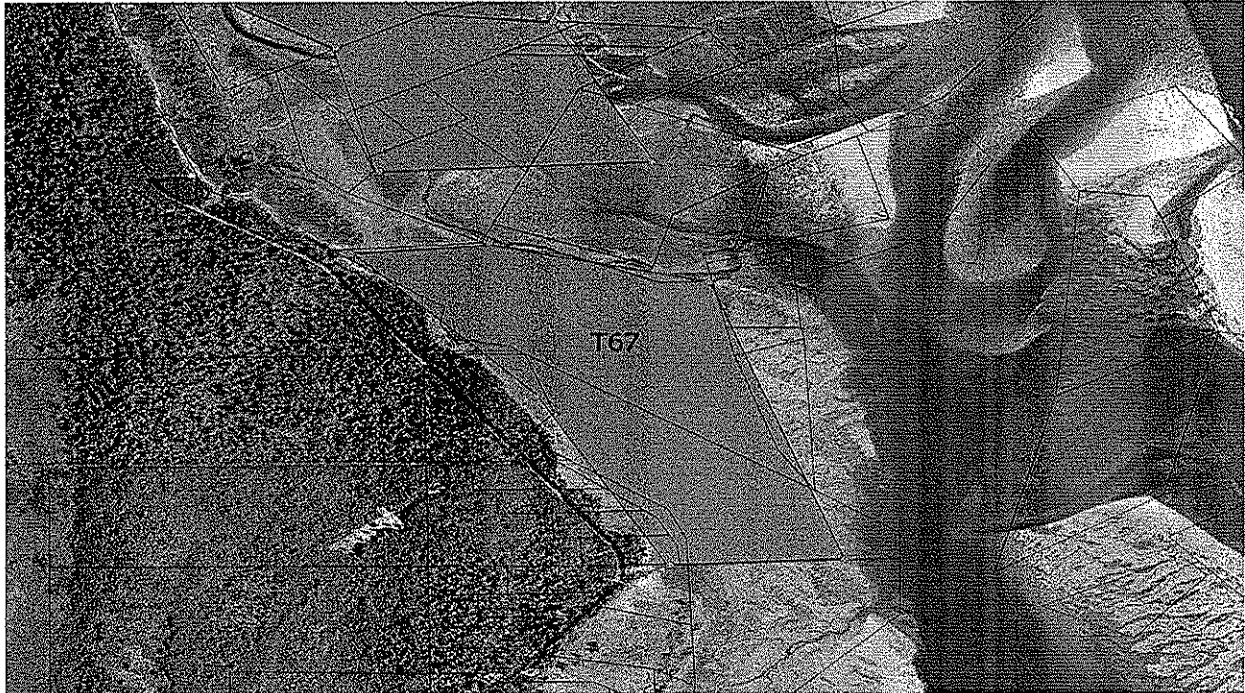


Figure 2. Parcels 13112255067, 13112755380



Figure 3. Parcels 79004001103, 79004003103, 79004000072, 79004000108

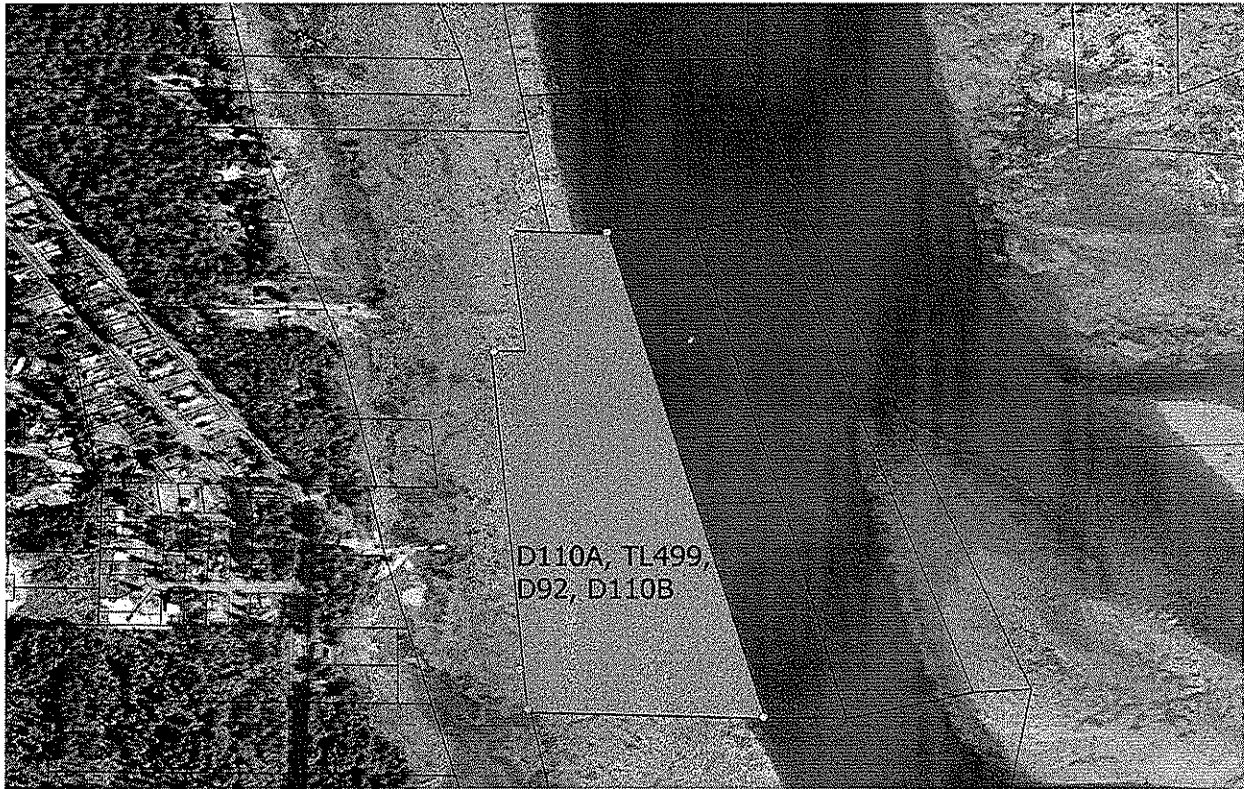


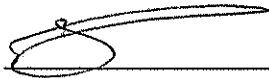
Figure 4. Parcel 79004000092



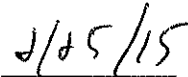
Figure 5. Parcels 79005000232, 79005000108, 790500179, 7900500179, 79005003003

Signature Requirements

I certify under penalty of law, that this document and all attachments were prepared under my direction or supervision in accordance with a system designed to assure that qualified personnel properly gathered and evaluated the information submitted. Based on my inquiry of those persons directly responsible for gathering information, the information in the Pretreatment Plan is, to the best of my knowledge and belief, true, accurate, and complete and will be updated as necessary. I am aware that there are significant penalties for submitting false information, including the possibility of fine and imprisonment of knowing violations.

A handwritten signature in black ink, consisting of a large, stylized loop followed by a horizontal line.

Signature

A handwritten date in black ink, written as "2/25/15".

Date