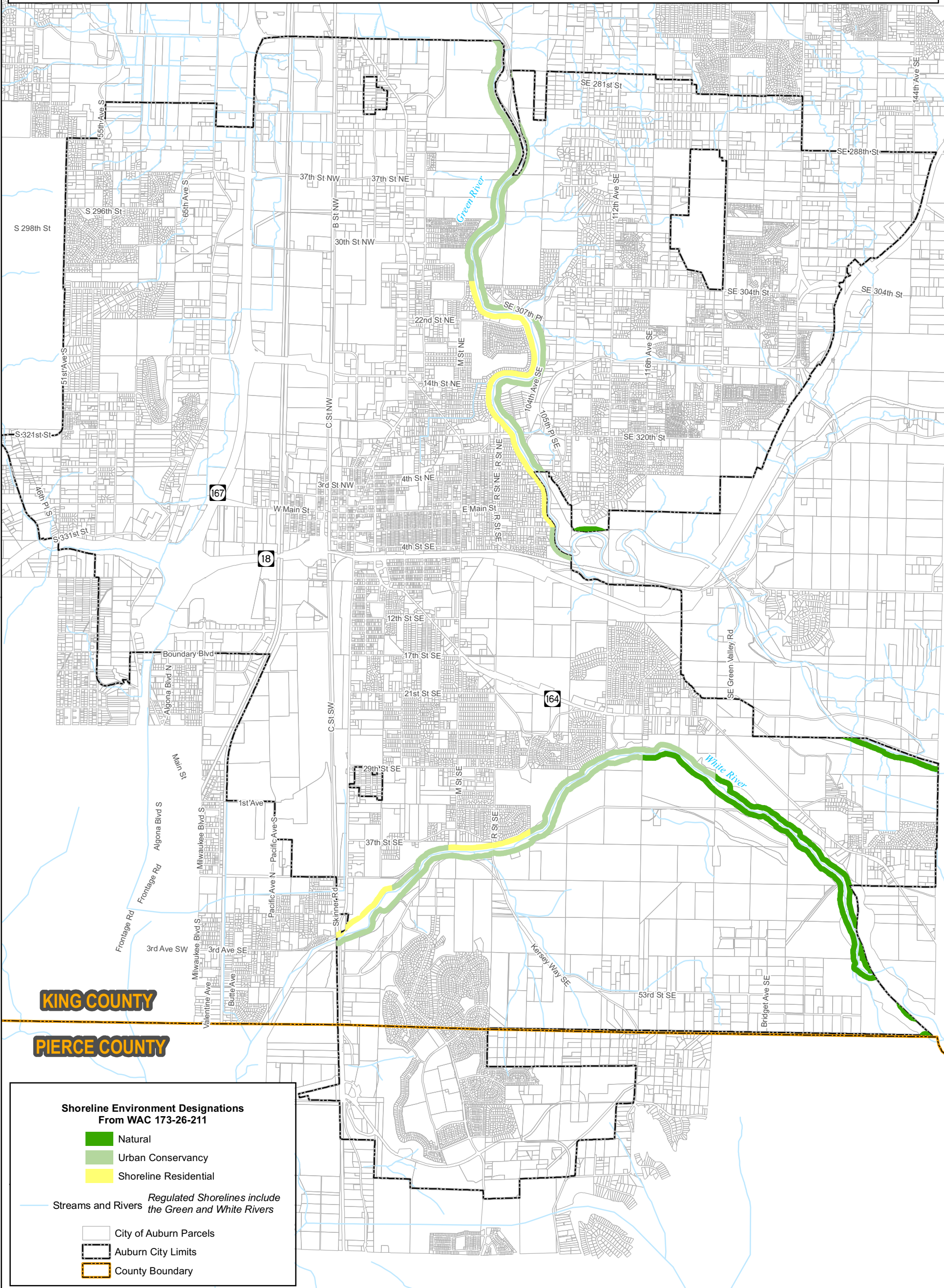




Auburn Shoreline Master Program

Shoreline Environment Designations



L:\ENVIR IMPACTS\2006 Projects\26053_AuburnSMPUpdate\GIS\working_SMP\area.mxd

File name: working_SMParea.pdf
Created/last edited by: DNE
Date last updated: 10/18/06

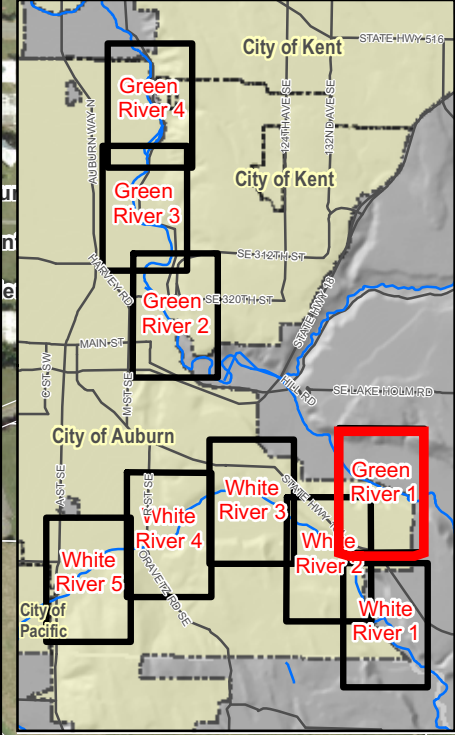
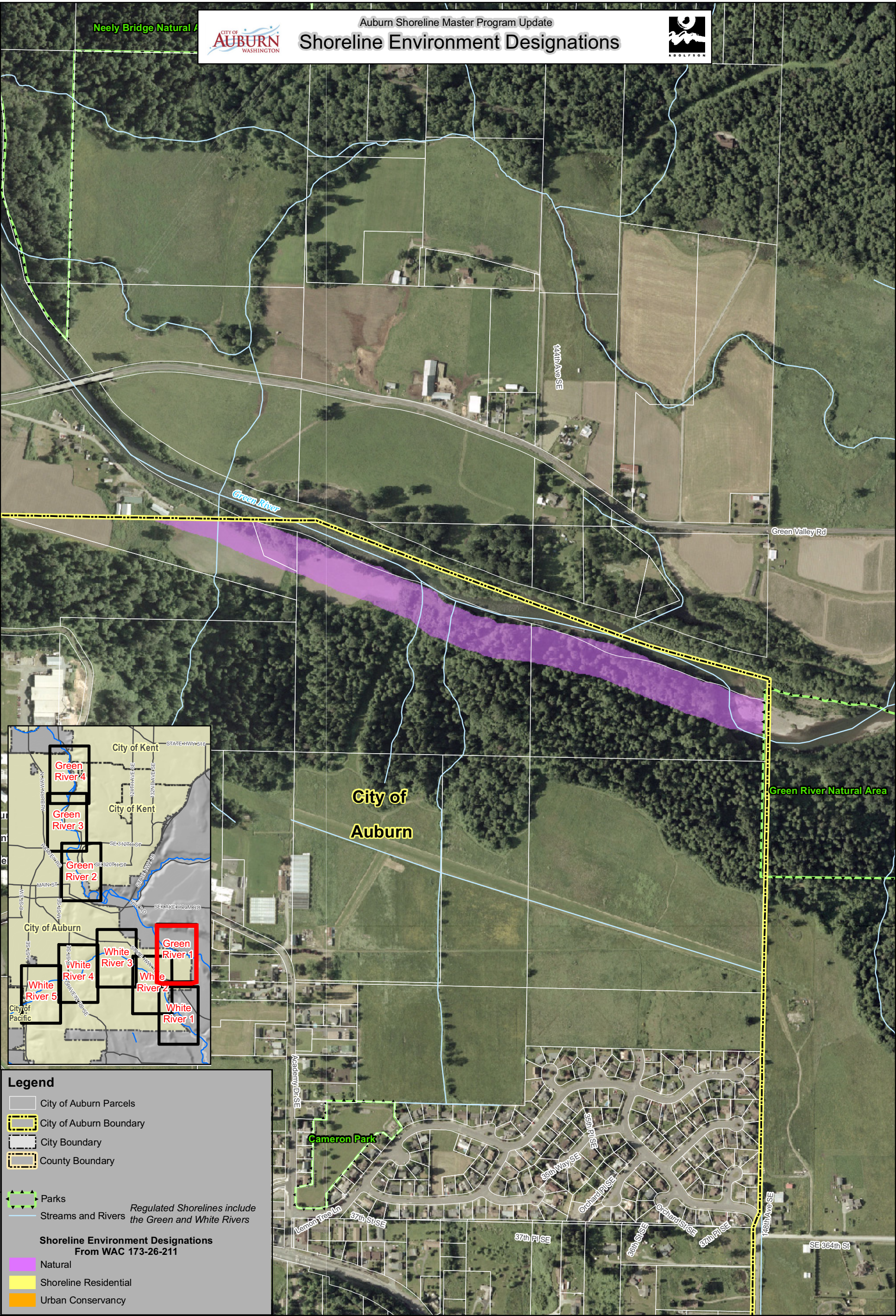
0 0.5 1 Miles

Map data are the property of the sources listed below.
Inaccuracies may exist, and Adolfson Associates, Inc. implies no warranties or guarantees regarding any aspect of data depiction.
SOURCE: City of Auburn GIS, 2006; King County GIS, 2006

* Shoreline jurisdiction boundaries depicted on this map are approximate. They have not been formally delineated or surveyed and are intended for planning purposes only. Additional site-specific evaluation may be needed to confirm/verify information shown on this map.

SHORELINE ENVIRONMENT DESIGNATIONS

AUBURN SMP
AUBURN / KING COUNTY, WASHINGTON



Legend

- City of Auburn Parcels
- City of Auburn Boundary
- City Boundary
- County Boundary
- Parks
- Streams and Rivers

Regulated Shorelines include the Green and White Rivers

Shoreline Environment Designations From WAC 173-26-211

- Natural
- Shoreline Residential
- Urban Conservancy

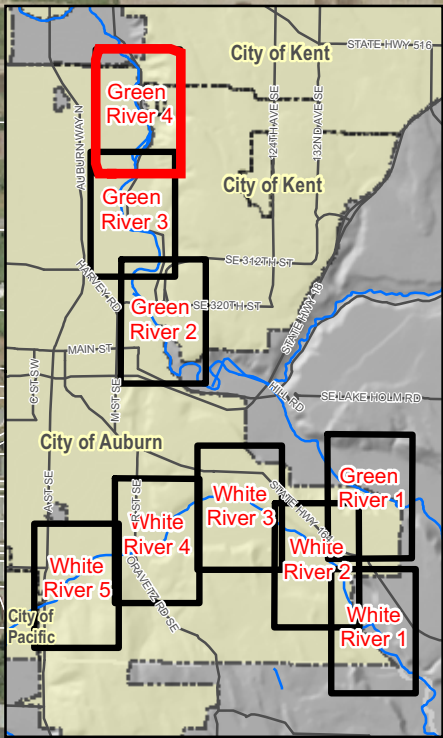
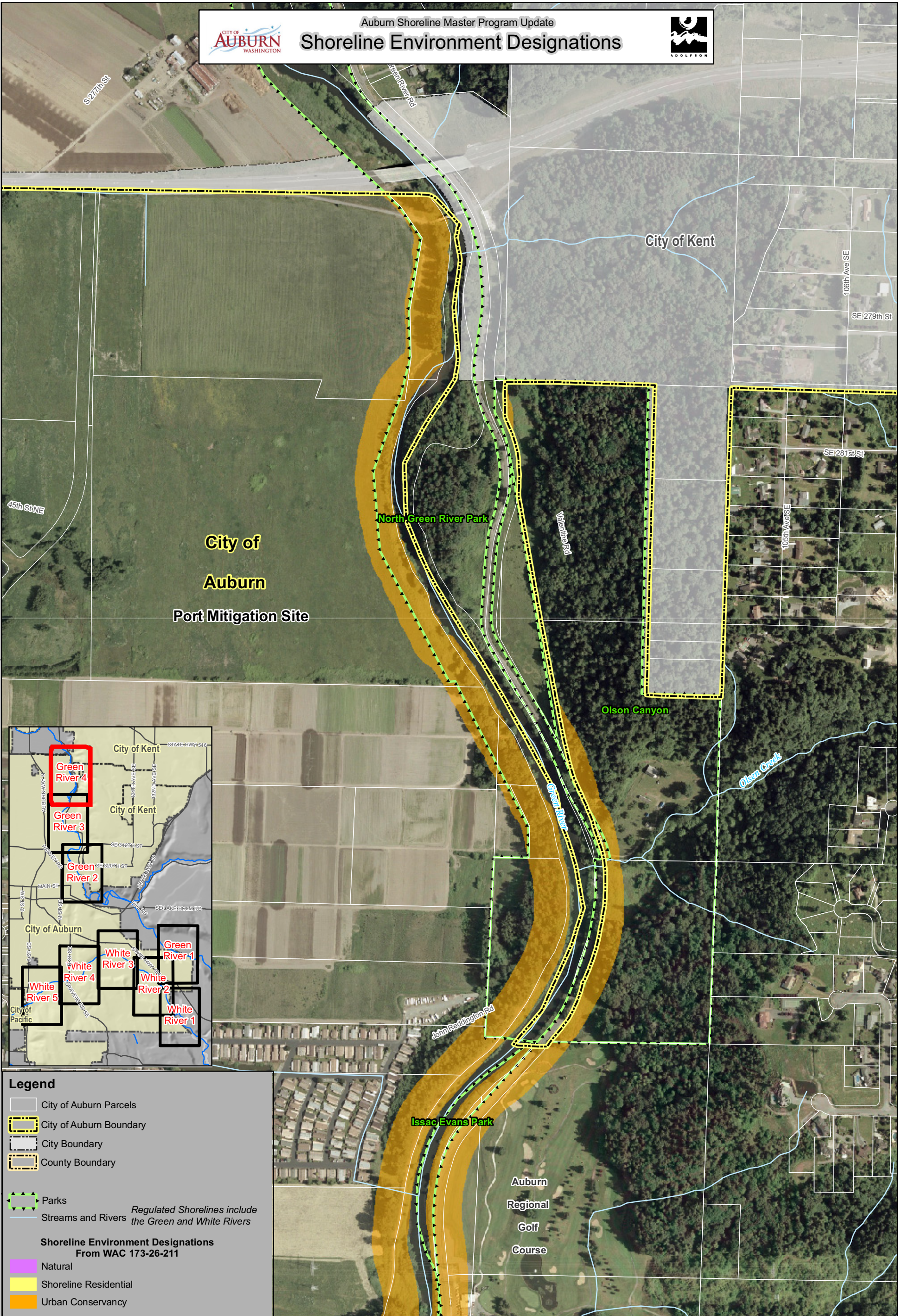
* Shoreline jurisdiction boundaries depicted on this map are approximate. They have not been formally delineated or surveyed and are intended for planning purposes only. Additional site-specific evaluation may be needed to confirm/verify information shown on this map.

AUBURN SMP
AUBURN / KING COUNTY, WASHINGTON



Auburn Shoreline Master Program Update

Shoreline Environment Designations



Legend

- City of Auburn Parcels
- City of Auburn Boundary
- City Boundary
- County Boundary
- Parks
- Streams and Rivers

Regulated Shorelines include the Green and White Rivers

Shoreline Environment Designations From WAC 173-26-211

- Natural
- Shoreline Residential
- Urban Conservancy

File name: working_SMParea.pdf
Created/last edited by: DNE
Date last updated: 10/18/06

0 250 500 1,000 Feet

Map data are the property of the sources listed below.
Inaccuracies may exist, and Adolfson Associates, Inc. implies no warranties or guarantees regarding any aspect of data depiction.
SOURCE: City of Auburn GIS, 2006; King County GIS, 2006; USGS Ortho Image, 2002

* Shoreline jurisdiction boundaries depicted on this map are approximate. They have not been formally delineated or surveyed and are intended for planning purposes only. Additional site-specific evaluation may be needed to confirm/verify information shown on this map.

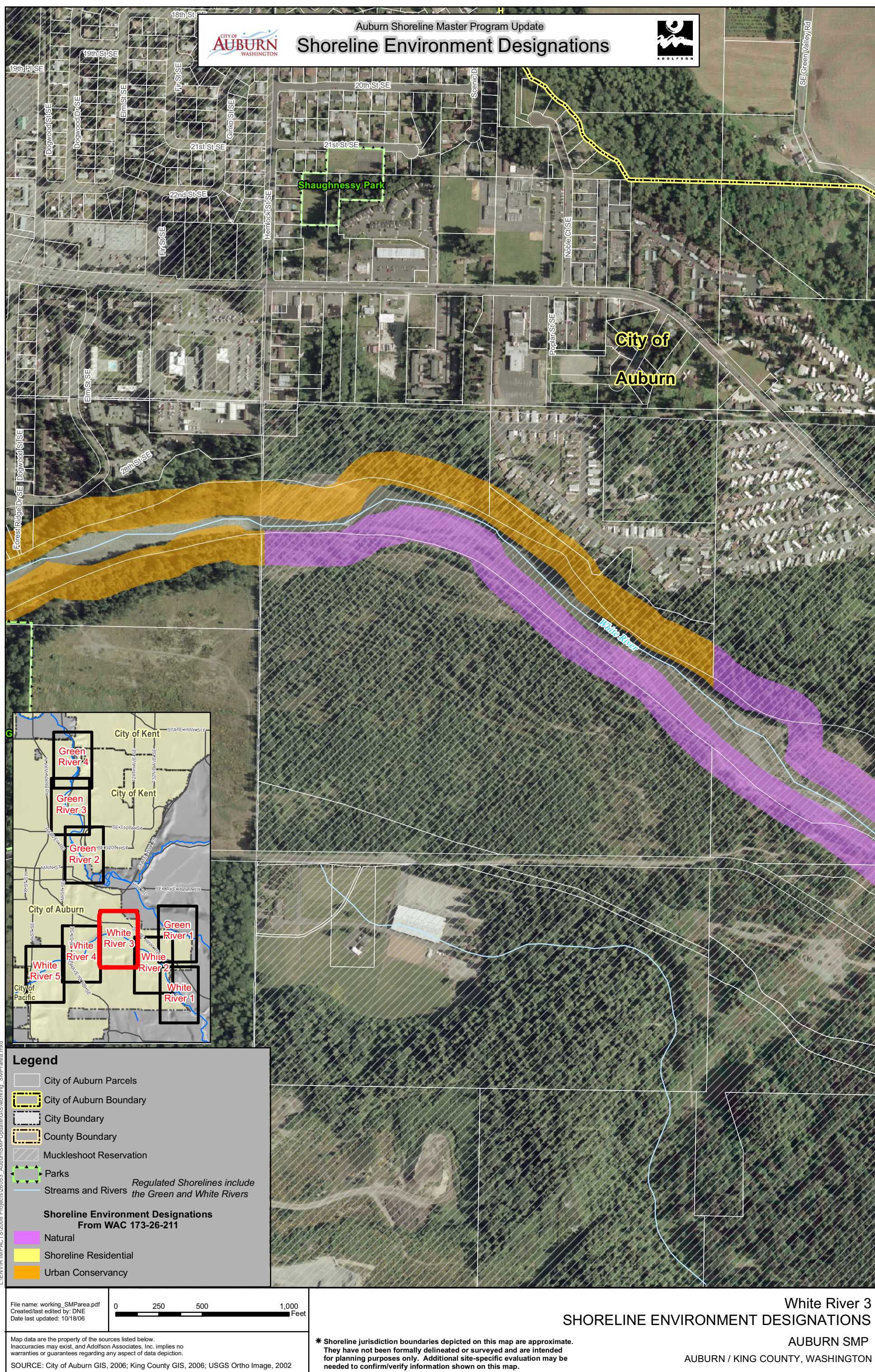


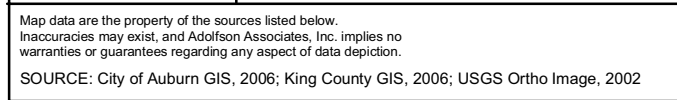
SHORELINE ENVIRONMENT DESIGNATIONS

White River 1

AUBURN SMP

AUBURN / KING COUNTY, WASHINGTON



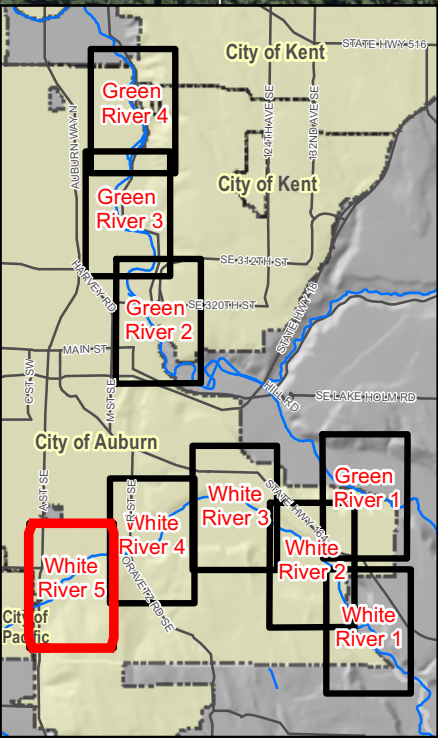
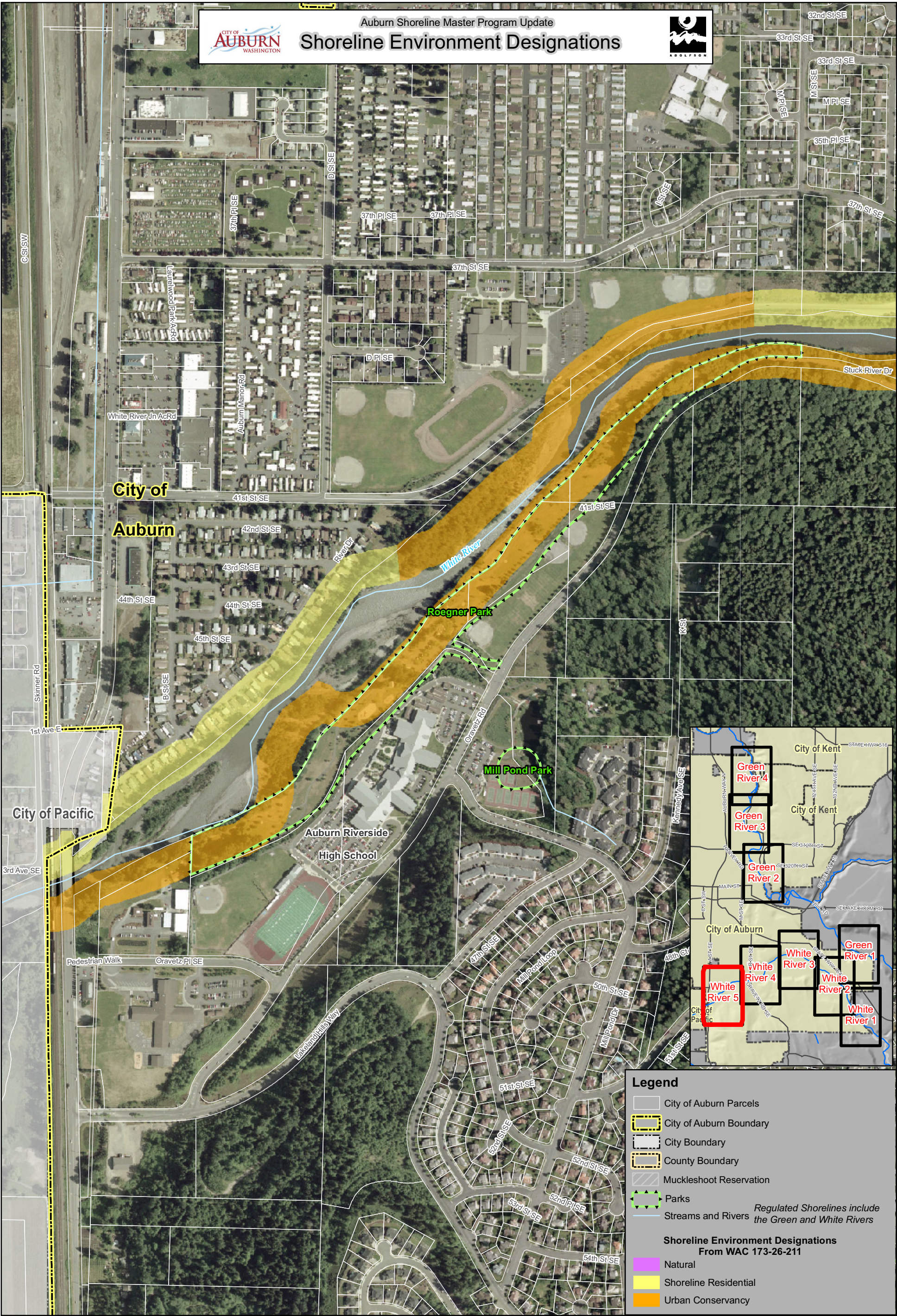


AUBURN SMP
AUBURN / KING COUNTY, WASHINGTON



Auburn Shoreline Master Program Update

Shoreline Environment Designations



Legend

- City of Auburn Parcels
- City of Auburn Boundary
- City Boundary
- County Boundary
- Muckleshoot Reservation
- Parks
- Streams and Rivers
- Regulated Shorelines include the Green and White Rivers*

Shoreline Environment Designations From WAC 173-26-211

- Natural
- Shoreline Residential
- Urban Conservancy

File name: working_SMParea.pdf
Created/last edited by: DNE
Date last updated: 10/18/06

0 250 500 1,000 Feet

Map data are the property of the sources listed below.
Inaccuracies may exist, and Adolfson Associates, Inc. implies no warranties or guarantees regarding any aspect of data depiction.
SOURCE: City of Auburn GIS, 2006; King County GIS, 2006; USGS Ortho Image, 2002

* Shoreline jurisdiction boundaries depicted on this map are approximate. They have not been formally delineated or surveyed and are intended for planning purposes only. Additional site-specific evaluation may be needed to confirm/verify information shown on this map.