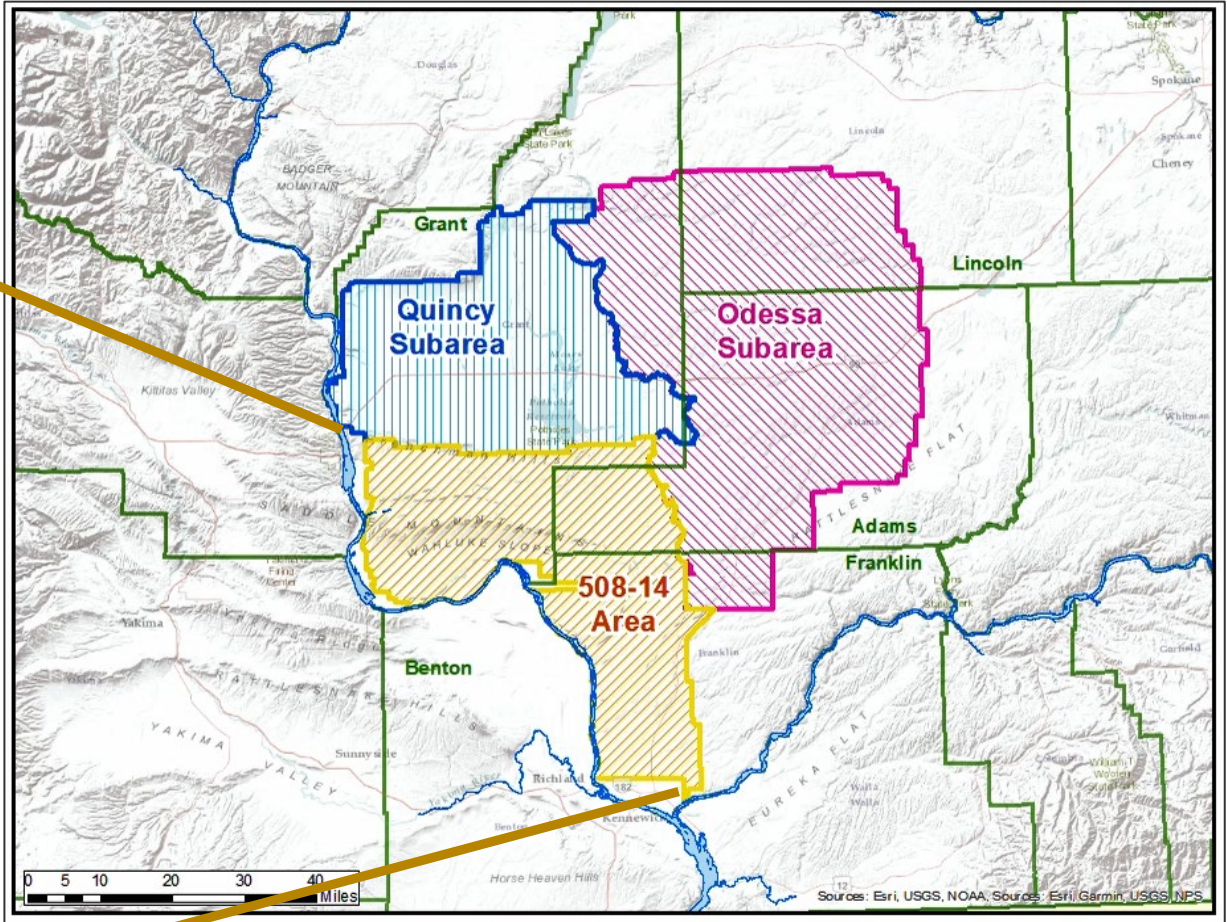




DEPARTMENT OF
ECOLOGY
State of Washington

Pasco Basin Boundary Designation & Groundwater Management Efforts

Pasco Basin Subarea

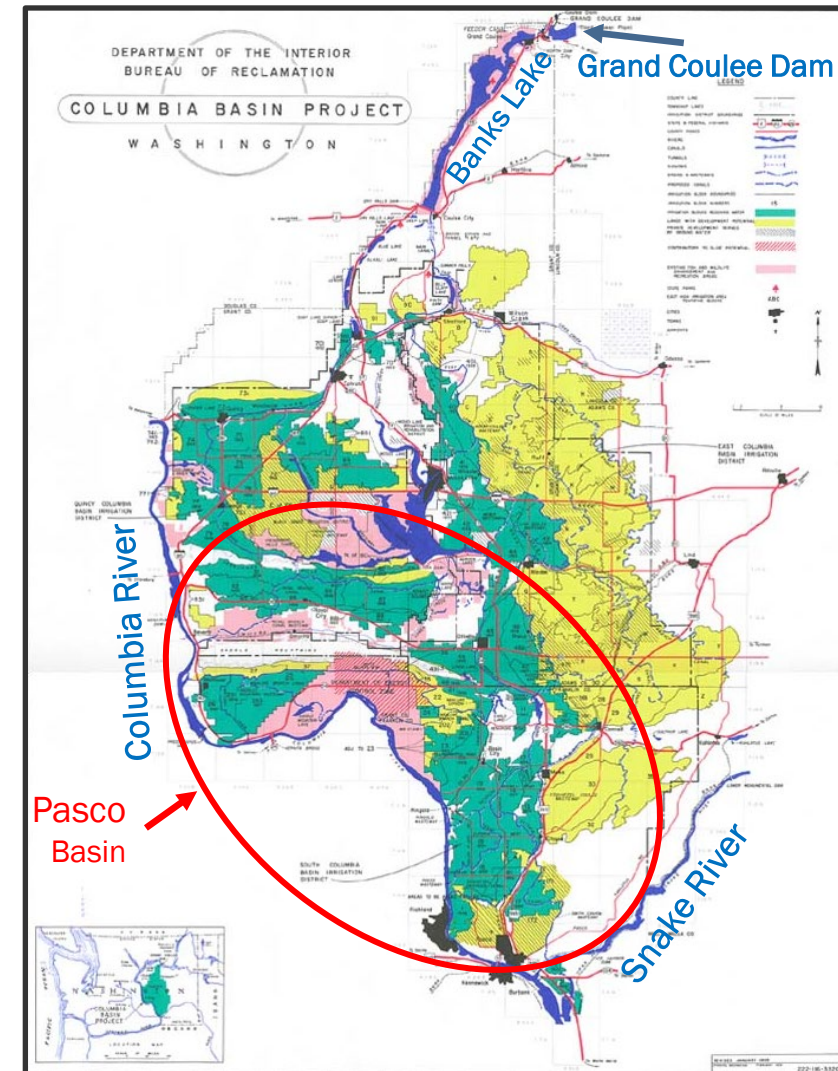


Columbia Basin Project Irrigation

Bureau of Reclamation
Federal Columbia Basin Project

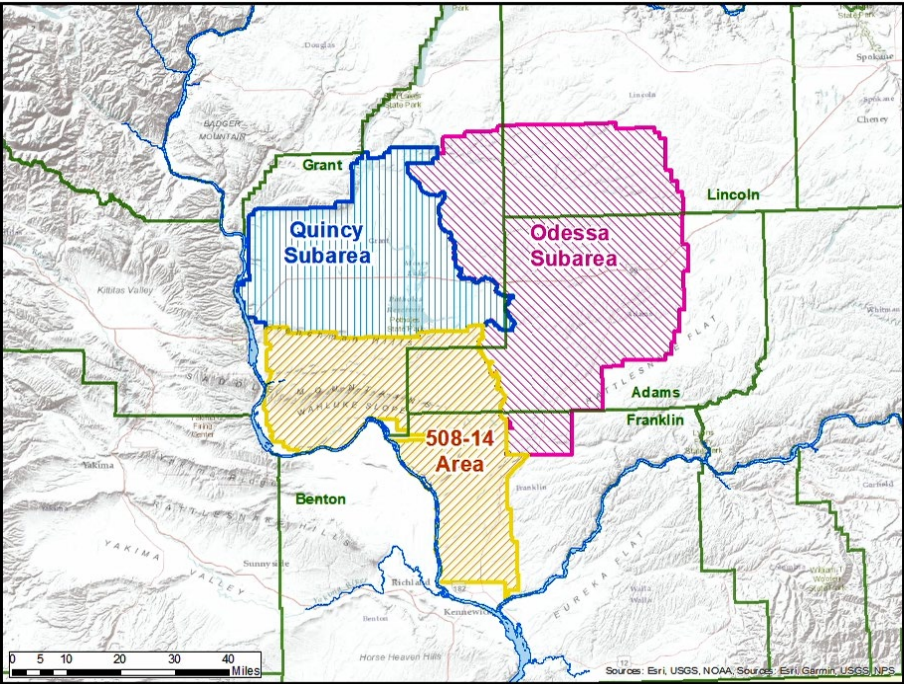


- Columbia Basin Act – early 1940s
- Irrigation in the basin relies on surface water from Federal Project (~680,000 acres)
- Return flows seep into ground and commingle with natural groundwater
- State issues withdrawal of groundwater in coordination with Reclamation, later designated as interim rule 508-14 WAC



Adapted from DOI, Bureau of Reclamation Columbia Basin Project Map

Pasco Basin History

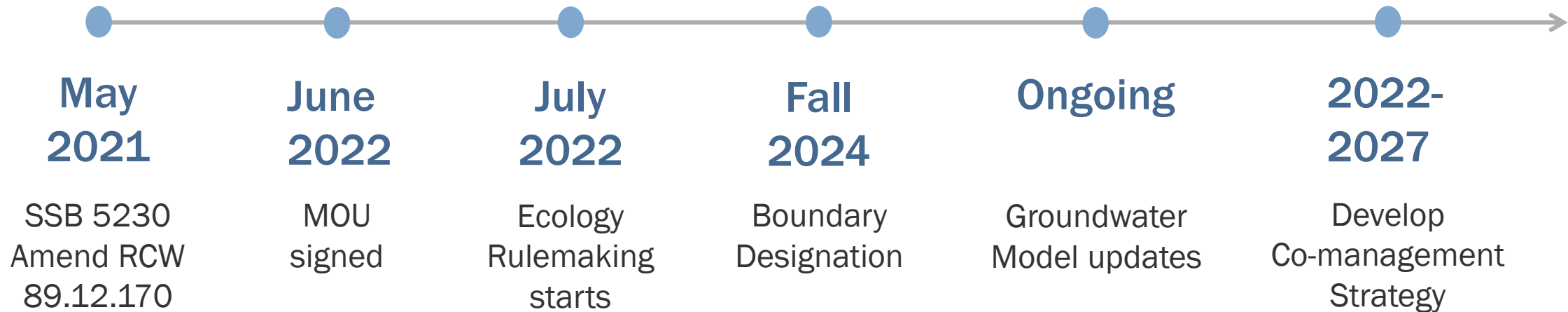


Pasco Basin History: 2021 Legislative Amendment

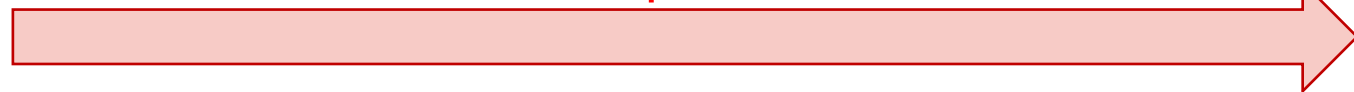


- Allocation through agreement of groundwater that exists as a result of the Columbia Basin Project
- Clarify process with subarea Boundary Designation under RCW 90.44.130
- Agreements fulfill requirements for groundwater availability
- Directs Ecology to conduct rulemaking including outreach
- Outcome of the co-management strategy with Reclamation is authorization of additional water use within the Project area

Current Efforts and Next Steps

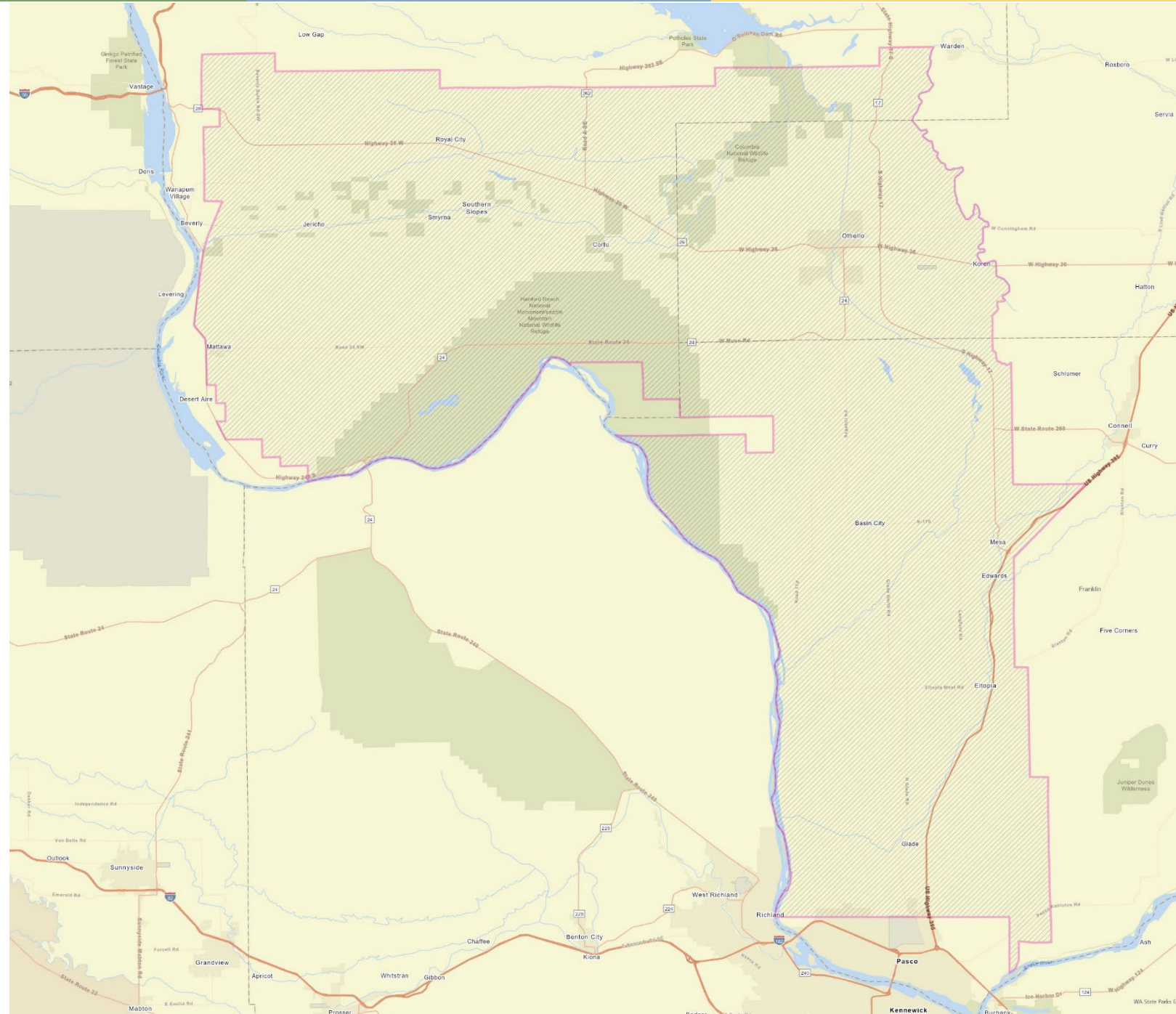


Outreach and Public Input

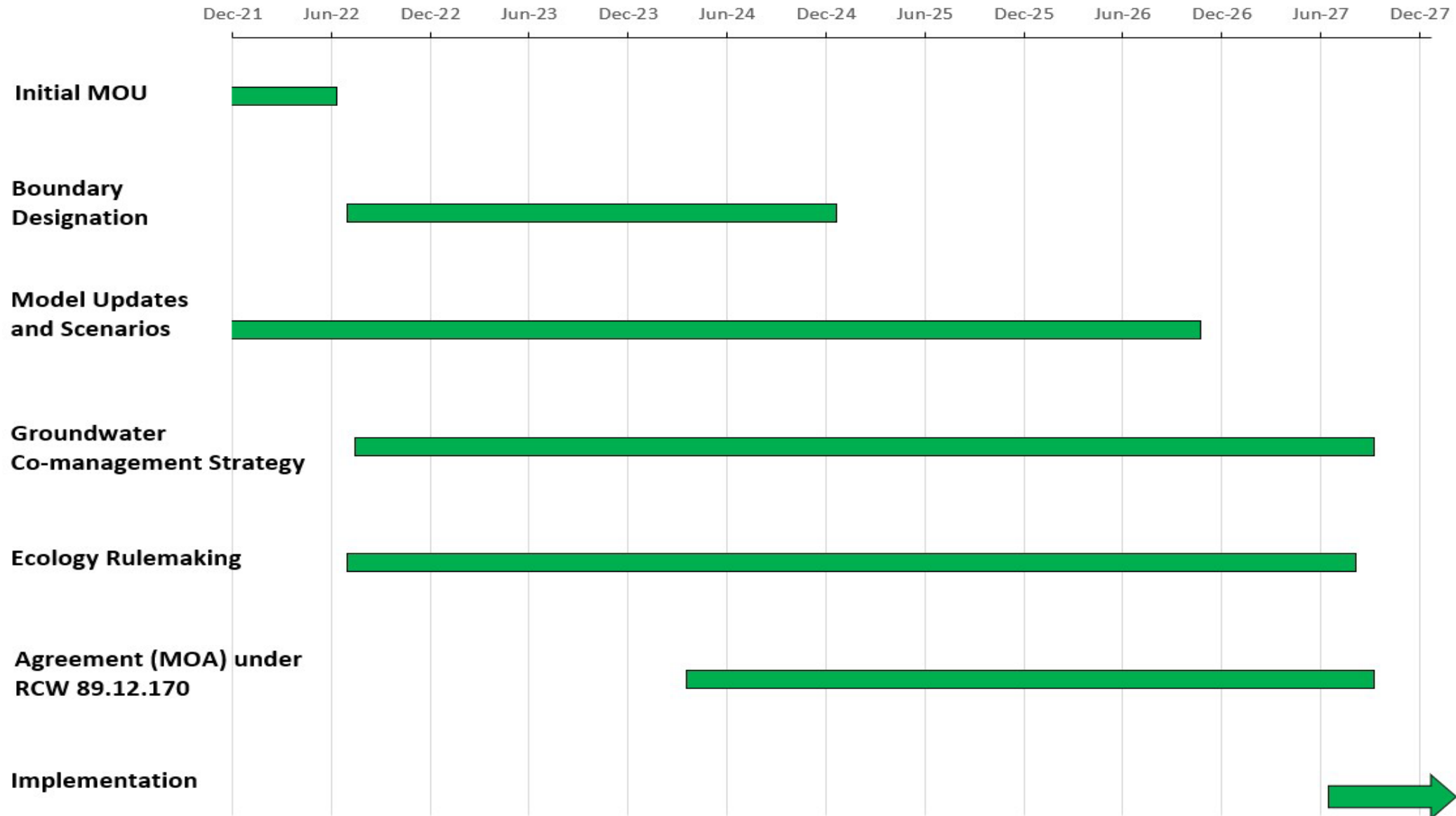


Boundary Designation

- Boundary established by Order
- Process includes public notice
 - Tri-City Herald and Columbia Basin Herald
- Materials include
 - Legal Description
 - Map
 - SEPA Determination & Checklist
- Comment period closes at 11:59 pm next Tuesday, December 10, 2024



Draft Schedule





Thank You!

Questions? Send to:

Karl Rains at karl.rains@ecy.wa.gov