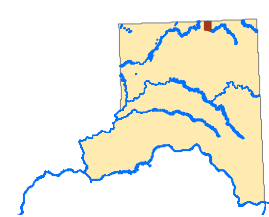


Official Shoreline Map

Town of Rosalia

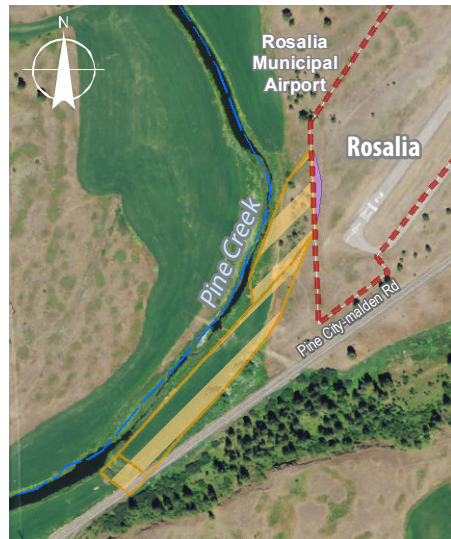


- SMP Stream^{TWC}
- SMP Waterbody^{TWC}
- City or Town Limit^{Ecy}

Proposed Environment Designations^{2TWC}

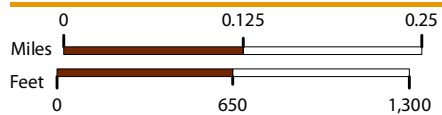
Town of Rosalia

- Rural Industrial
- Rural Industrial - Future Annexation Area
- Shoreline Parks
- Shoreline Residential
- Urban Conservancy
- Urban Conservancy - Future Annexation Area

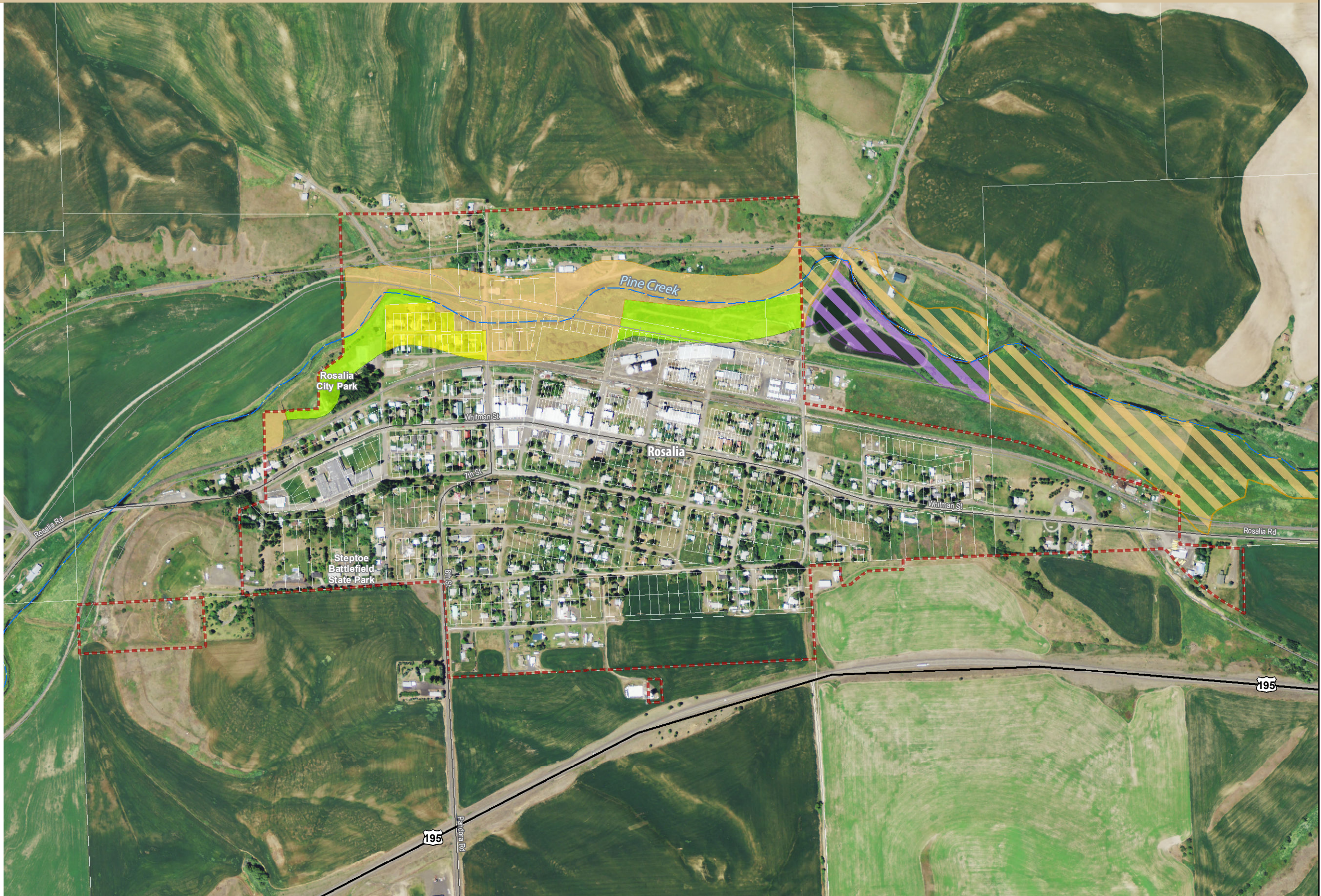


Rosalia Airport Inset

Notes:
We hereby certify that this map constitutes the Official Shoreline Map as approved by Ordinance 571 of the Town of Rosalia and signed by its chair dated this 24th day of November, 2015.
²Shoreline areas waterward of the ordinary high water mark (OHWM) are assigned an Aquatic environment designation.



Original scale = 1:8,500
@ 11" x 17" layout.
Please scale accordingly.



All features depicted on this map are approximate. They have not been formally delineated or surveyed and are intended for planning purposes only. Additional site-specific evaluation may be needed to confirm/ verify information shown on this map.

Date: 11/24/2015

Data Sources (not listed above): Roadways and rail from DOT. Aerial imagery from 2013 USDA NAIP. Source abbreviations are described on the map folio cover sheet.