



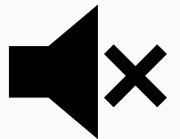
Board of Pilotage Commissioners – Tug Escort Rulemaking Workshop #7

May 8, 2024



Zoom Reminders, Hybrid Meeting Logistics

- Please use the raise hand function (virtual or physical).
- Please use the comment function.
- Please mute while not speaking. Please don't interrupt others.
- Transcript of the meeting to support note-taking only.
- Zoom Attendees: We are going to be using zoom whiteboard feature later in the presentation. Ecology staff are on to help troubleshoot!



Meeting Objectives

- Share preliminary scoping decision from BPC
- Dig into readily available information on the geographic scope of the proposed alternatives to:
 1. Inform method of analysis for EIS
 2. Develop a shared understanding of the alternatives area. Share local knowledge to support effective analysis.
- Announce upcoming workshop

Roles and Responsibilities



BPC

- Outreach lead
- Government-to-Government consultation
- Final decisions on tug escort requirements



Ecology

- Rulemaking process
- Technical expertise
- Regulatory Analyses
 - Administrative Procedures Act
 - State Environmental Policy Act
 - Regulatory Fairness Act

Rulemaking Overview (ESHB 1578)

- **Vessel Types:** The BPC, in consultation with Ecology, must adopt tug escorts rules for the following vessels:
 - Small (5,000 – 40,000 dwt) oil tankers
 - ATBs, and towed barges greater than 5,000 dwt designed to transport oil in bulk internal to the hull

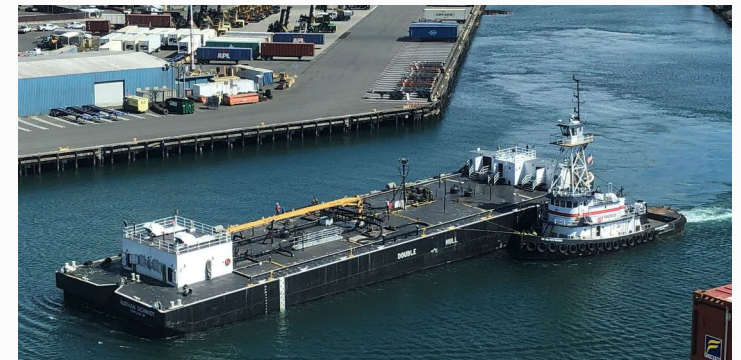


© Frans Eykel
MarineTraffic.com

Tanker



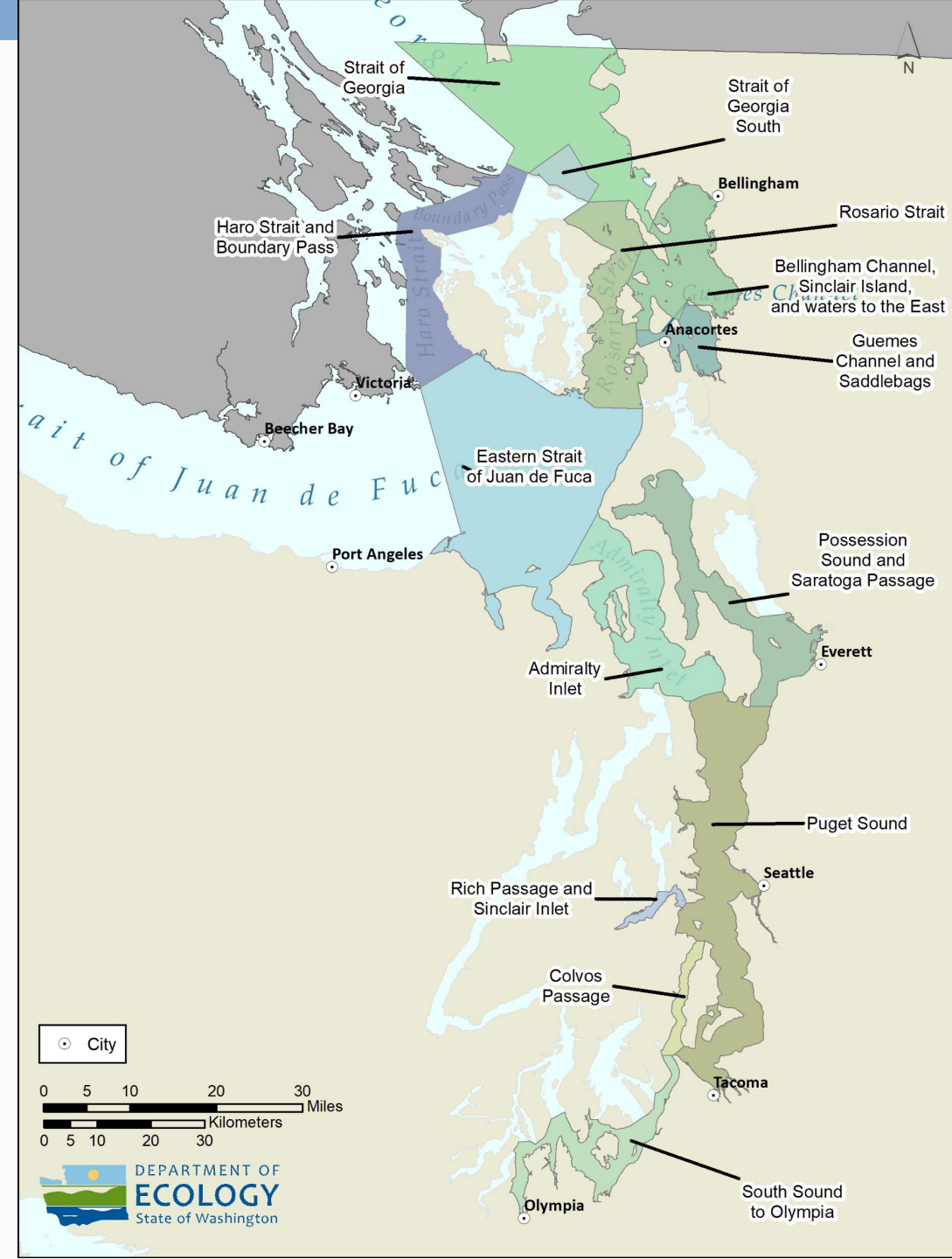
ATB



Tank Barge

Geographic Scope:

- “East of the line extending from Discovery Island light south to New Dungeness light and all points in the Puget Sound area.”





Rulemaking Overview Continued

- The adopted rules could:
 - Establish new escort requirements for the target vessels
 - Adjust escort requirements implemented by ESHB 1578 for Rosario and waters east.
 - Suspend the existing escort requirements for Rosario and waters east.
 - Determine that no change from the current requirements is needed
- The adopted rules will also specify operational and functional requirements



Rulemaking Objective for Use in SEPA

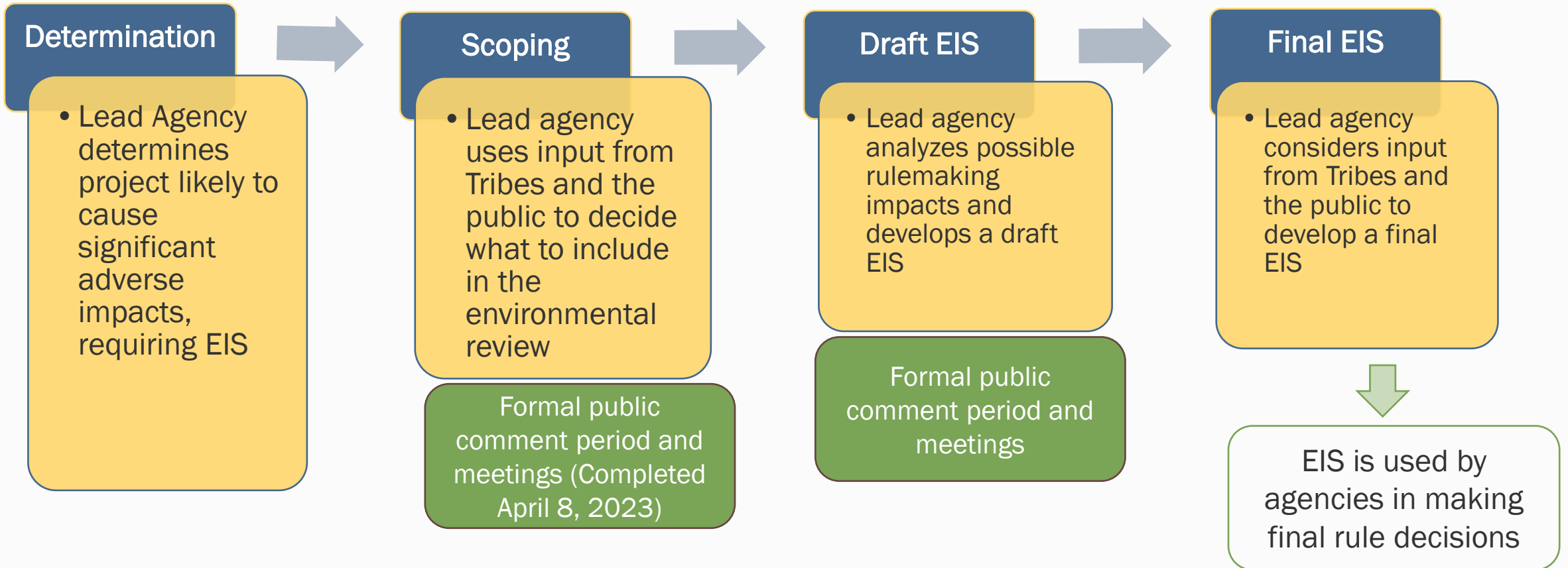
- Reduce the risk of a major oil spill through potential tug escort requirements for oil tankers 5-40,000 DWT and barge and ATBs over 5,000 DWT.
- Design requirements in a way that
 - minimizes underwater noise
 - focuses vessel traffic into the existing traffic lanes
 - and minimizes impact to treaty fishing areas



EIS Process

Government to Government Consultation with Tribes as Requested by Tribal Governments

Workshops to share information and seek input from Tribes and stakeholders





Rulemaking and EIS Happen Concurrently

Rulemaking Action	SEPA Action	Proposed Timeline
Rulemaking Announcement (CR-101 filing):	Determination of Significance / Scoping Comment Period	February 22, 2023
Rule Development Workshops	EIS Development Workshops	March 2023 – December 2024
Rule Proposal and start of comment period (CR-102 Filing)	Issuance of Draft EIS with CR-102 and comment period.	Anticipated July 2025
Rule Adoption (CR-103 Filing):	Final EIS issued at least 7 days before the CR-103	Anticipated December 2025
Rule Effective	N/A	Anticipated January 2026 (Typically, 31 days after CR-103 filing)



BPC Preliminary Scoping Decision



BPC March Meeting

- The BPC met on March 21st
- The Oil Transportation Safety Committee (OTSC) provided a recommendation on preliminary EIS alternatives and scope.
- The BPC selected 3 alternatives for assessment in the EIS
- The BPC made no changes to OTSC elements of the environment to include.



Identification and Selection of Alternatives

1. Model results were used to identify potential alternatives
 - The OTSC considered direct benefits, indirect benefits, and tug escort efficiency
2. Other factors (pilot experience, knowledge of the water, other sources, etc.) were used to select among potential alternatives suggested by the model results.

Note: We anticipate returning to the modeling results and/or modeling new scenarios as the EIS is developed.

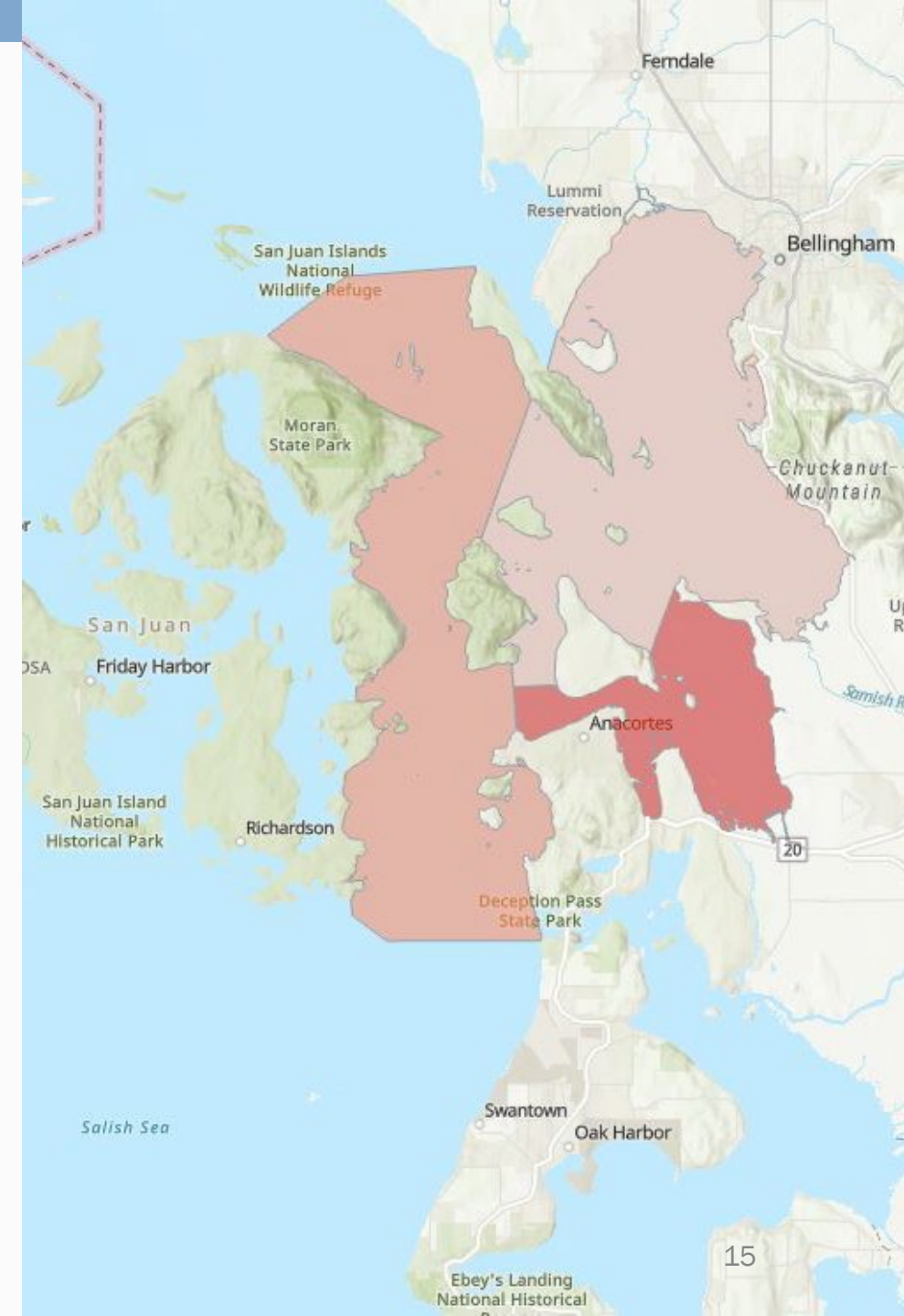
✓ Alternative 1 (Pre-2020)

- **Description:** Remove 2020 escort requirements for Rosario Strait and connected waters east.
- **Rationale:**
 - Will help understand benefits of the 2020 rule
 - ESHB 1578 explicitly allows for removal
 - May reduce underwater noise, vessel traffic, etc.



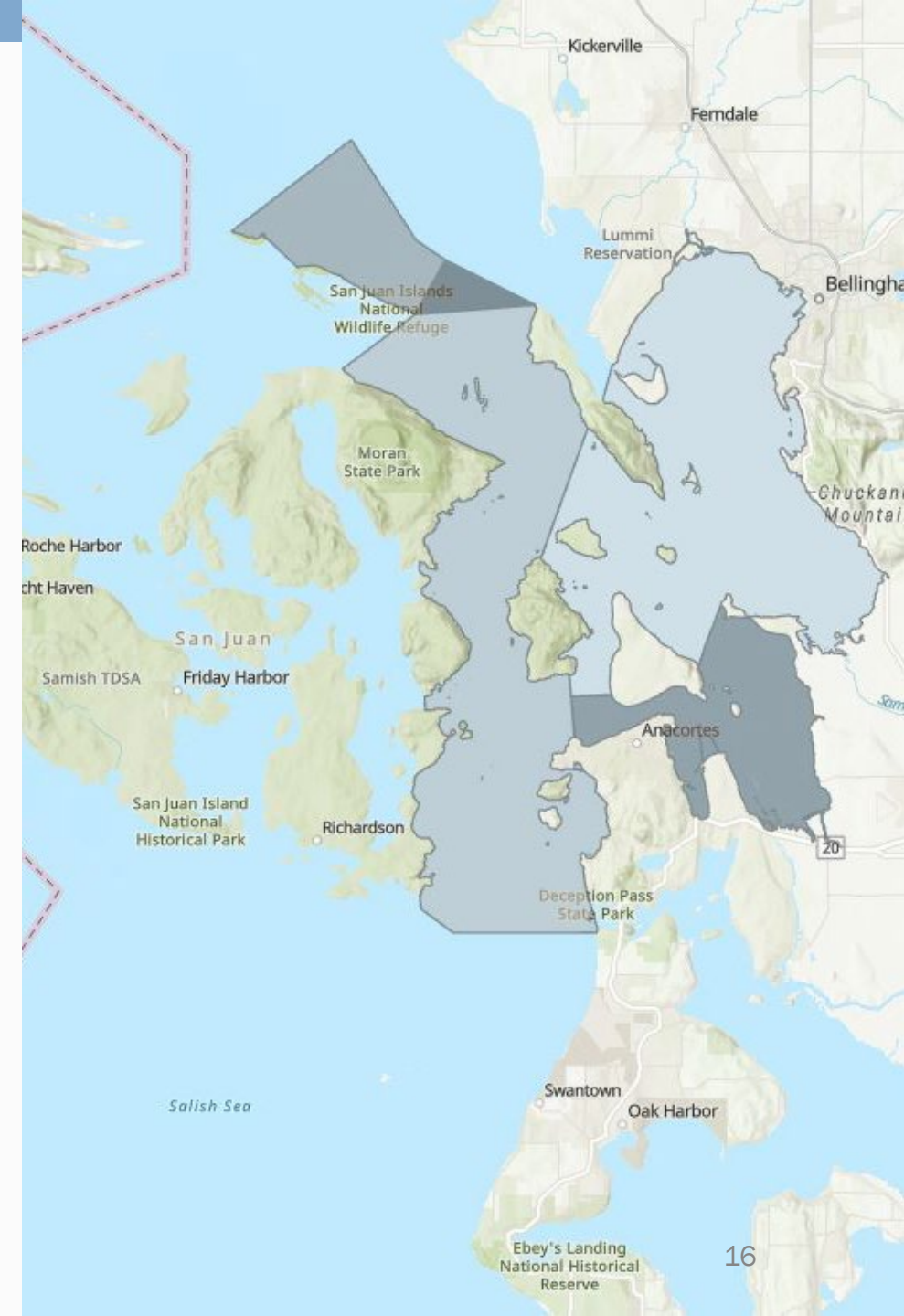
✔ Alternative 2 (No Action)

- **Description:** Maintain 2020 requirement for Rosario and waters east (no change).
- **Rationale:**
 - No Action alternative is required under SEPA.

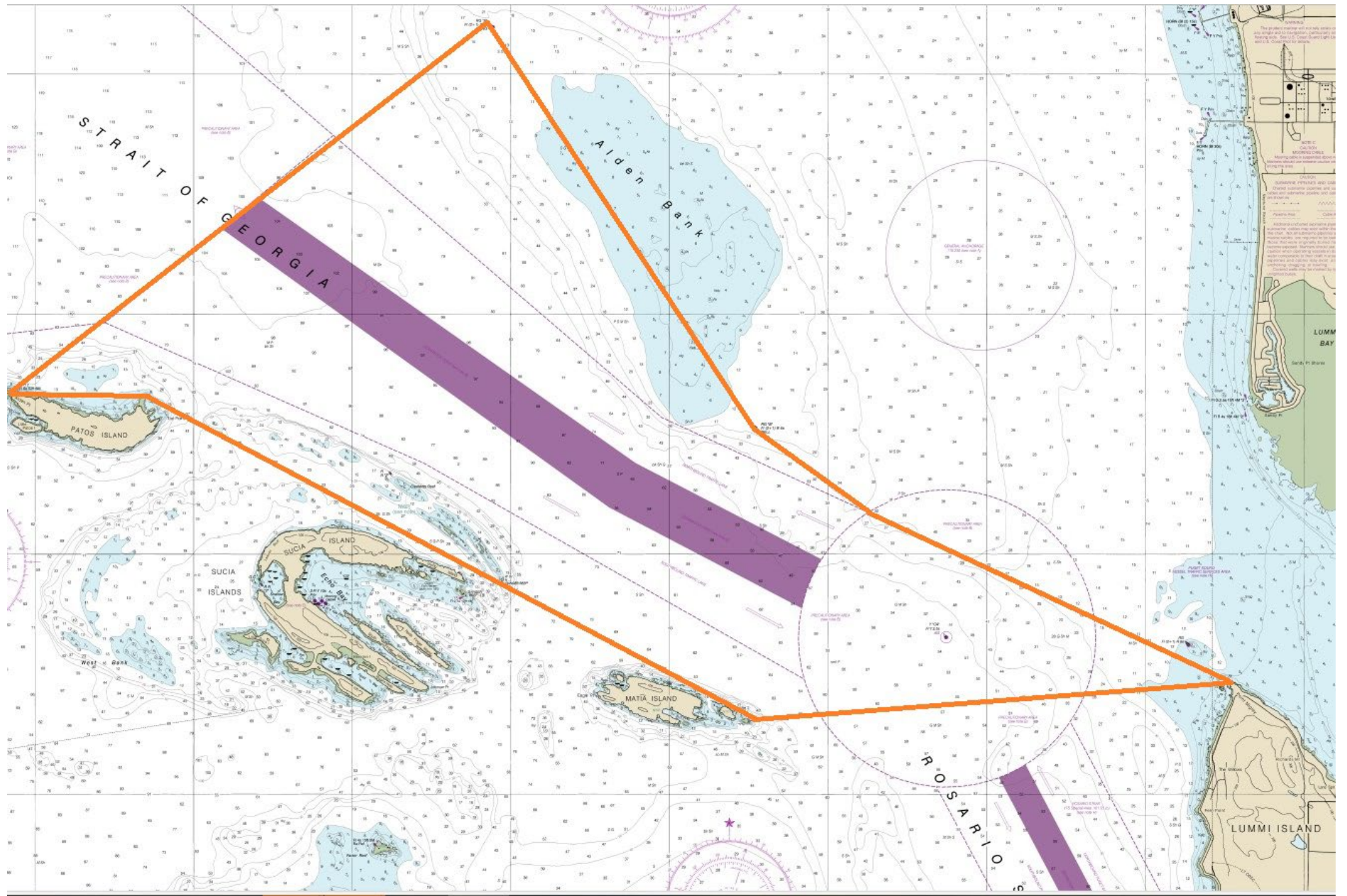


✓ Alternative 3 (Expansion)

- **Description:** Expand 2020 escort requirements to Strait of Georgia South Zone and corner of Strait of Georgia Zone.
- **Rationale:**
 - Model showed high escort efficiency
 - OTSC Pilot representative agreed that characteristics of this zone make it a good candidate for escort requirement
 - Adjacent to current escort area (straightforward to implement)



A chartlet showing potential expansion into Strait of Georgia South



✘ Alternative 4 (Haro/Boundary)*

- **Description:** Expand 2020 escort requirements to Haro Strait and Boundary Pass
- **Rationale:**
 - Implementation and authority concerns
 - Concerns about attempts to avoid the escort requirement
 - Navigational safety

**Note: BPC wants this to be reconsidered in 2028 review*





Alternative 5 (Partial Removal)

- **Description:** Remove 2020 escort requirements in Bellingham Channel and Waters East Zone.
- **Rationale:**
 - Pilots emphasized dangerous nature of this zone (high currents, rocky, curvy, dangerous)



Preliminary Alternatives Summary





BPC Vote: Elements of the Environment

Element	Include in EIS
*Air Quality and GHG Emissions	Yes
Water Quality	Yes
*Plants and Animals (incl. SRKW, marine mammals)	Yes
Energy and Natural Resources	Yes
*Environmental Health: Releases (oil spills)	Yes
*Environmental Health: Noise (incl. underwater noise, ambient/operational noise)	Yes
Aesthetics, Light, and Glare	Yes
*Tribal Natural and Cultural Resources	Yes
Historic and Cultural Resources (other, non-tribal)	No
*Transportation: Vessel Traffic	Yes

Note: BPC support for focus on environmental justice – to be integrated throughout

** = Priority Element as identified by the BPC*

Questions?

- BPC Voting Process?
- Preliminary alternatives to be assessed?
- Preliminary list of elements of the environment to be assessed?





Next Steps: Finalizing Scope

- Scoping Report will be sent out when finalized.
 - It is a summary.
 - This is not a required step/document.
- Any comments we receive will be considered in developing the Draft EIS.



Geographic Scope and Methods Development



Goals for This Part of the Workshop



Inform development of methods for EIS analyses



Develop shared understanding of this area. Share specific local information to support effective analysis.



Your Input

What information do YOU want to better understand potential impacts of this rulemaking?

What do you want us to know about this specific place and resources as we define our methodological approach?

What other information is important to you as we're defining methods for analysis?



Next Step: Methodology Development

- Next step after scoping is developing methodological approaches for analyses in the EIS
 - Scoping: what needs to be analyzed?
 - Methods Development: how are we going to do it?
- Rule Team currently working on this
- Focus of a future workshop



Content of Methodology Memos

- Description of study area
- Sub-elements to be analyzed
- Available references and data
- Methods of analysis
- Impact indicators and thresholds
- Approach to identifying mitigation
- Relevant scoping comments

Focus for Today



Element	Priority?	Data Sources
Vessel Traffic	Yes	2021 Vessel Activity Synopsis , 2023 Summary of Tug Escort Analysis Results
Oil Spills	Yes	2023 Summary of Tug Escort Analysis Results
SRKW (Plants and Animals)	Yes	SRKW Sightings Data 1999-2022 , NOAA SRKW Critical Habitat Maps , (NEED CRAB AND BIRD LAYER LINKS)
Air Quality	Yes	WA DOH Environmental Health Disparities Map , (SENSITIVE RECEPTORS DESCRIPTION/LINK?)
Environmental Justice	Integrated throughout	WA DOH Environmental Health Disparities Map
Recreation	No	WDFW Major Recreational Fishing Areas , (NEED SHELLFISH HARVEST LINK)
Light, Glare, Aesthetics	No	This layer includes anchorages published in the Code of Federal Regulations (General & Explosive), announced by the Pacific Pilotage Authority (Canadian), proposed by the United States Coast Guard (Non Designated), or identified by a visual review of AIS data (Non Designated)

Not Included Today:

- Priority Elements: Tribal Natural and Cultural Resources, Underwater Noise
- Not Priority Elements: Water Quality, Energy and Natural Resources



Reminder

Focus on adverse impacts to the environment resulting from proposed changes to the tug escort rules as described in the alternatives.



**Priority
Element:
Vessel
Traffic
(Escort Tugs)**

- New Heat map from Adam
- + Add table with underway time?



**Priority
Element:
Vessel
Traffic
(Escort Tugs)**

- Model Results and Associated Analyses
 - Relative frequency of escort incidents: collisions, allisions, loss of propulsion, etc.
 - Escort tug hazard rates
 - Results by alternatives
 - Changes in underway time
 - Transits

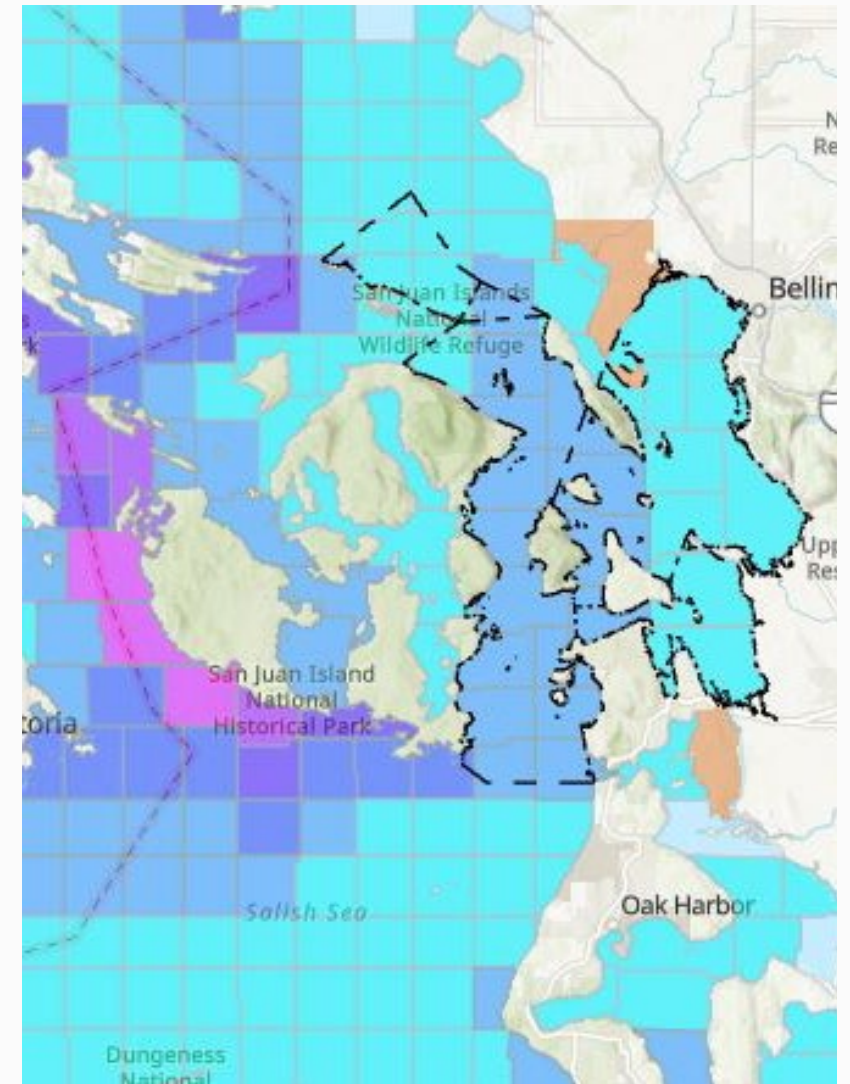
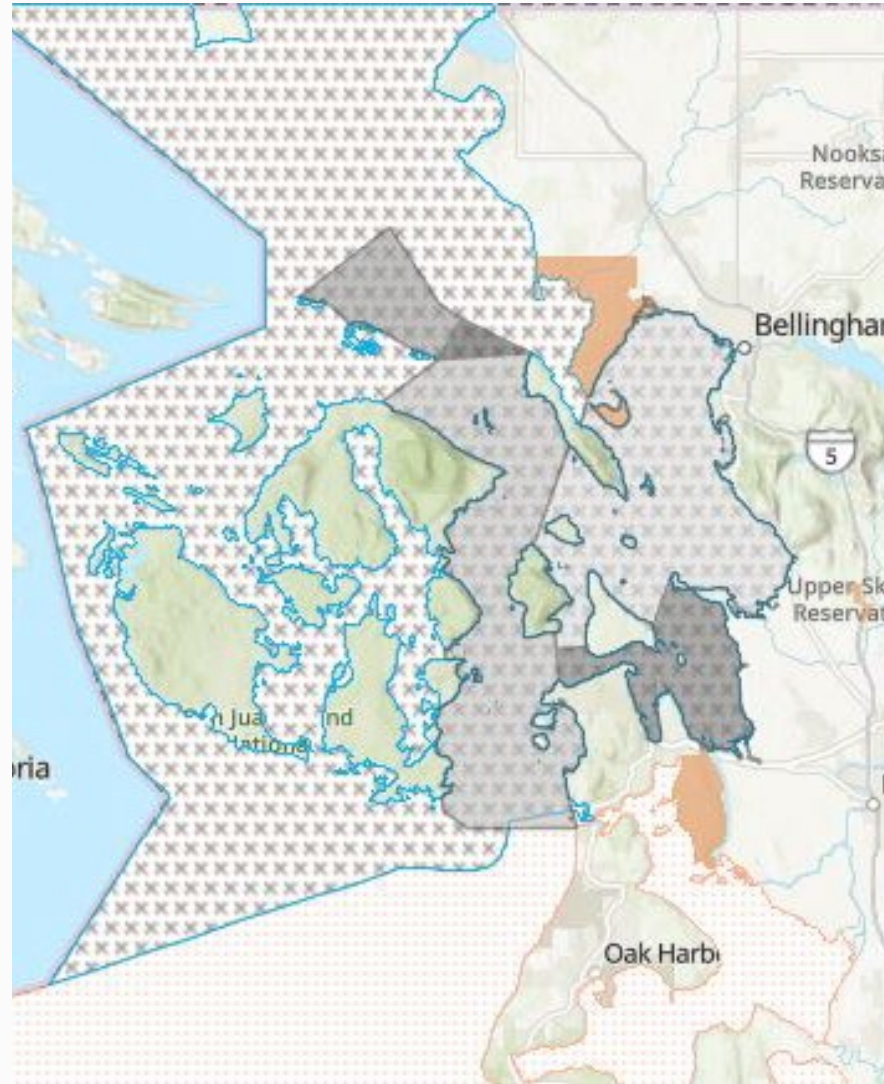


Model Results and Associated Analyses

Priority Element: Oil Spill Risk

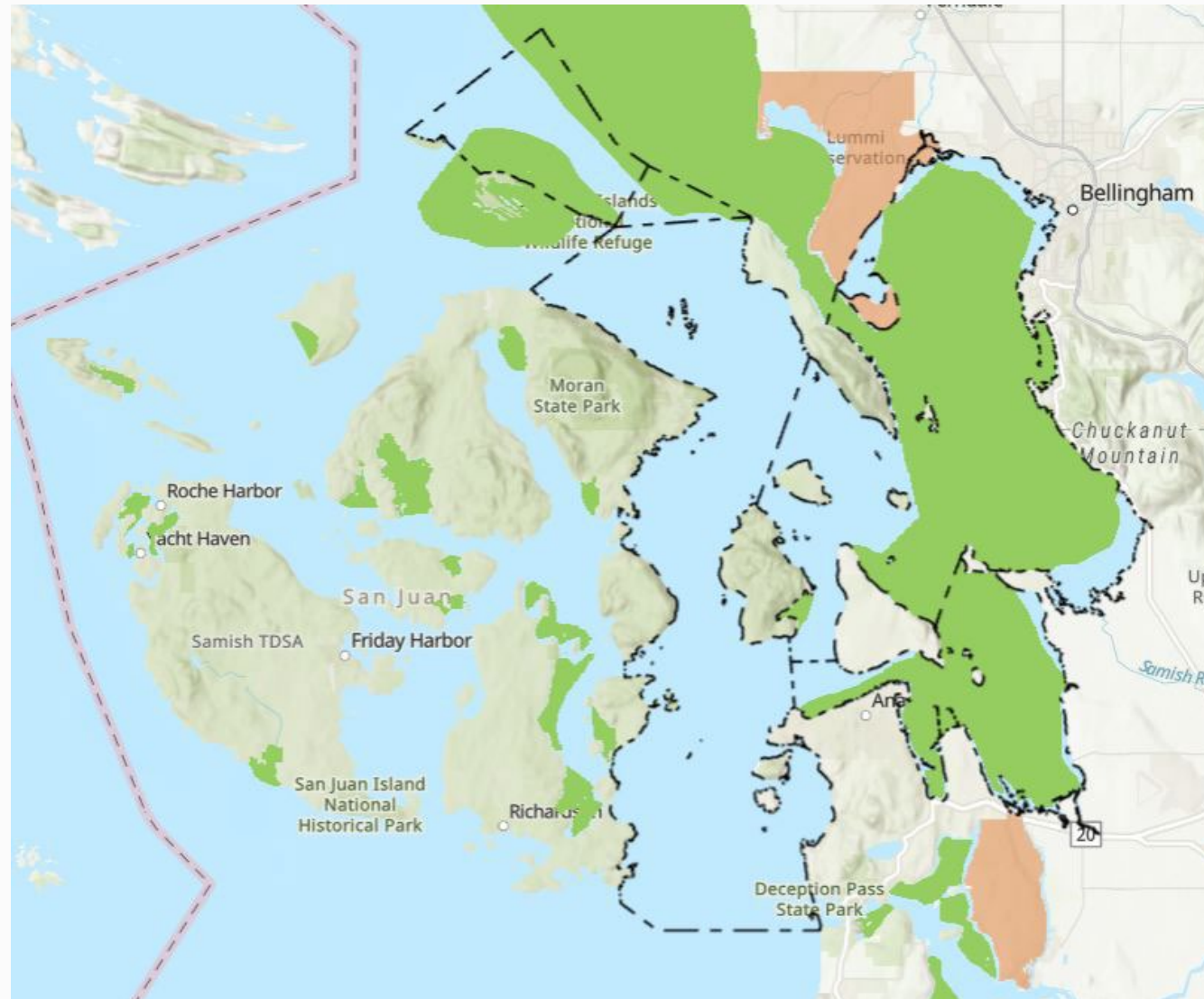
Tug Escorts	Target Vessels
<ul style="list-style-type: none">• Hazard incident frequency: collisions, allisions, loss of propulsion, etc.• Hazard rates from escort tugs	<ul style="list-style-type: none">• Drift grounding frequency• Oil volume at risk• Oil outflow• Results by zone or alternative• Results by vessel type• Map of drift grounding locations for target vessels

Priority Element: Plants and Animals



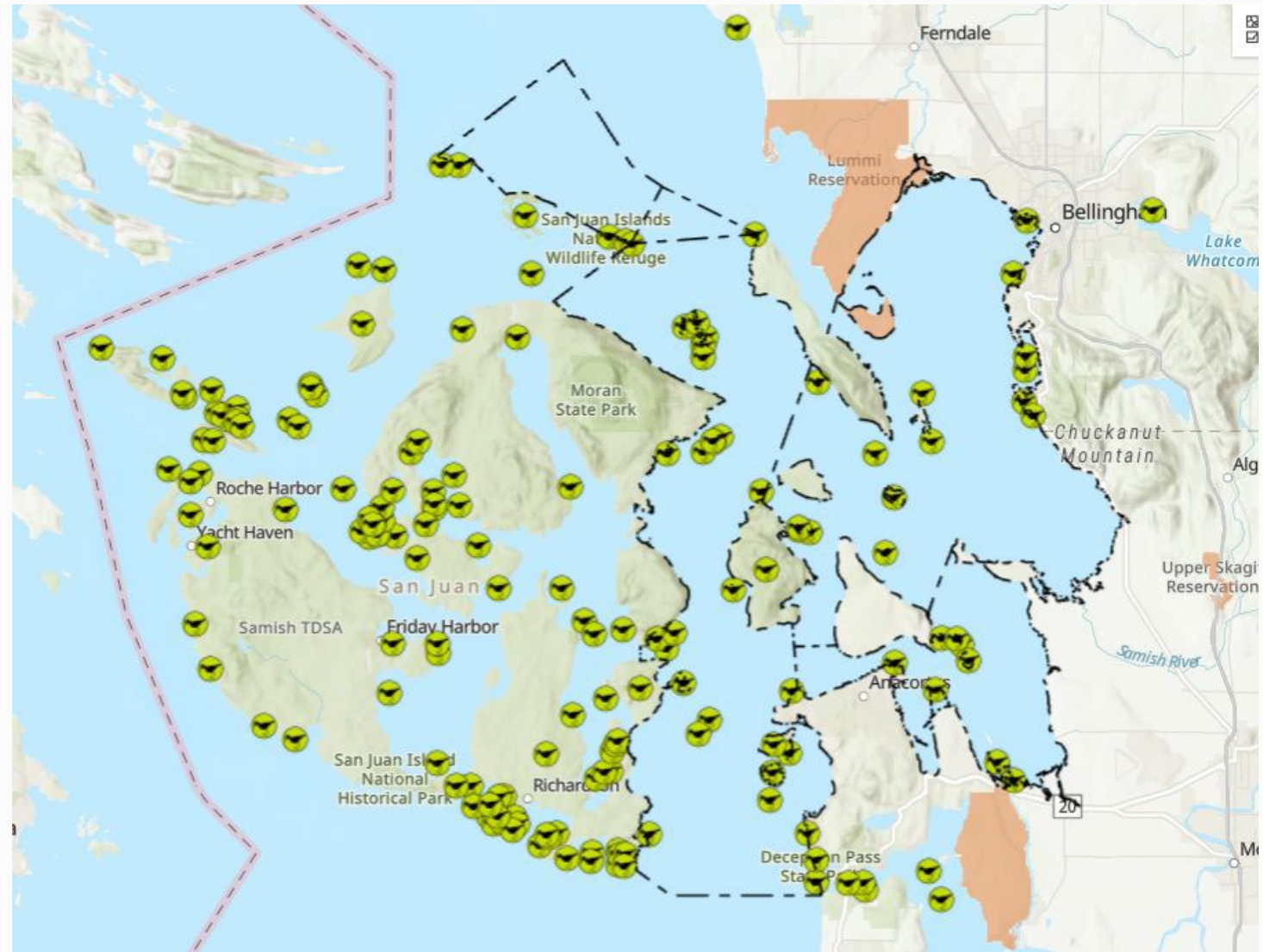
At left: SRKW Summer Core and Critical Habitat designations. At right: SRKW sightings data. Both with preliminary alternatives boundaries.

Priority Element: Plants and Animals



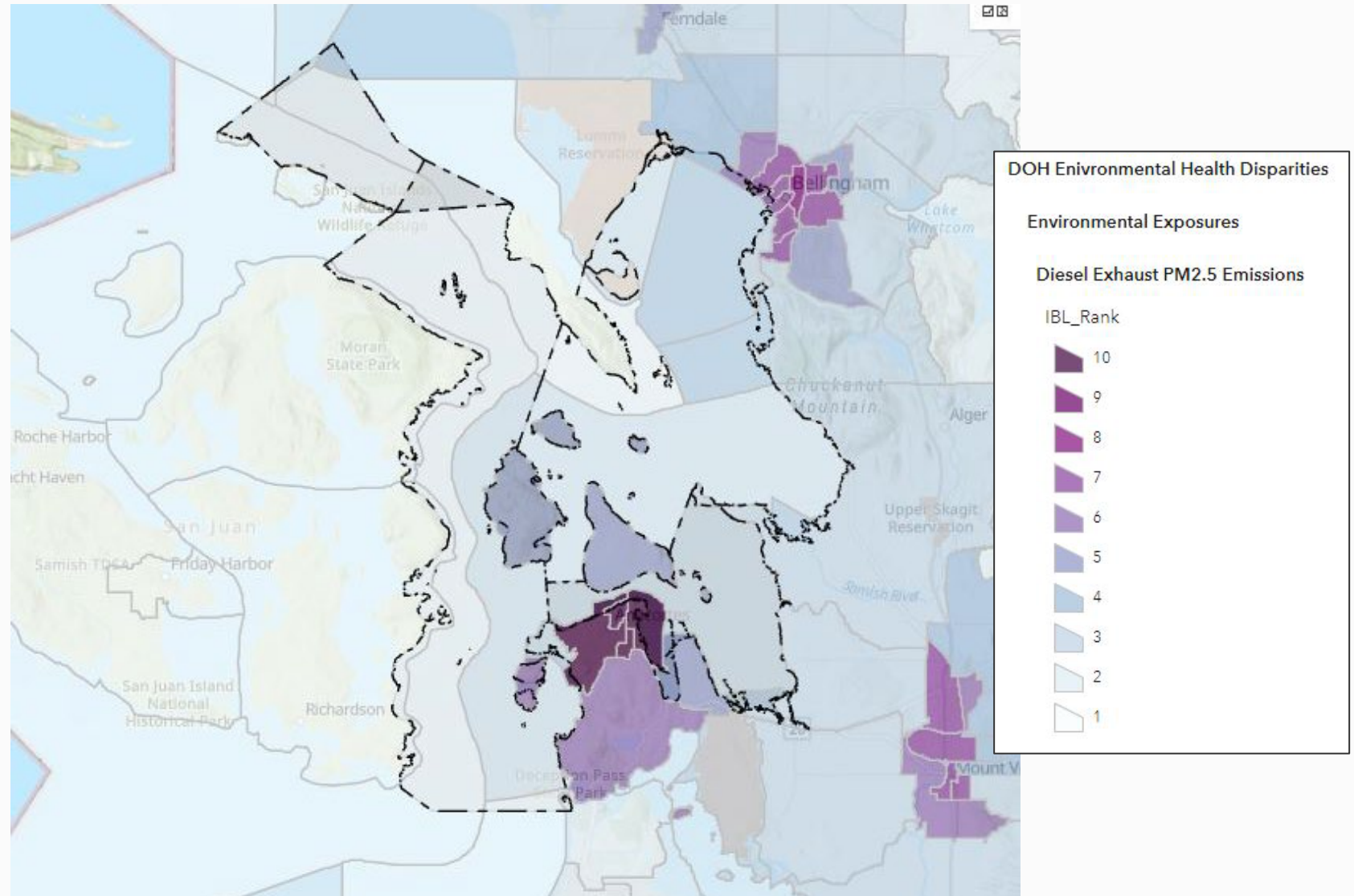
Dungeness crab distribution (in green) with preliminary alternatives boundaries.

Priority Element: Plants and Animals



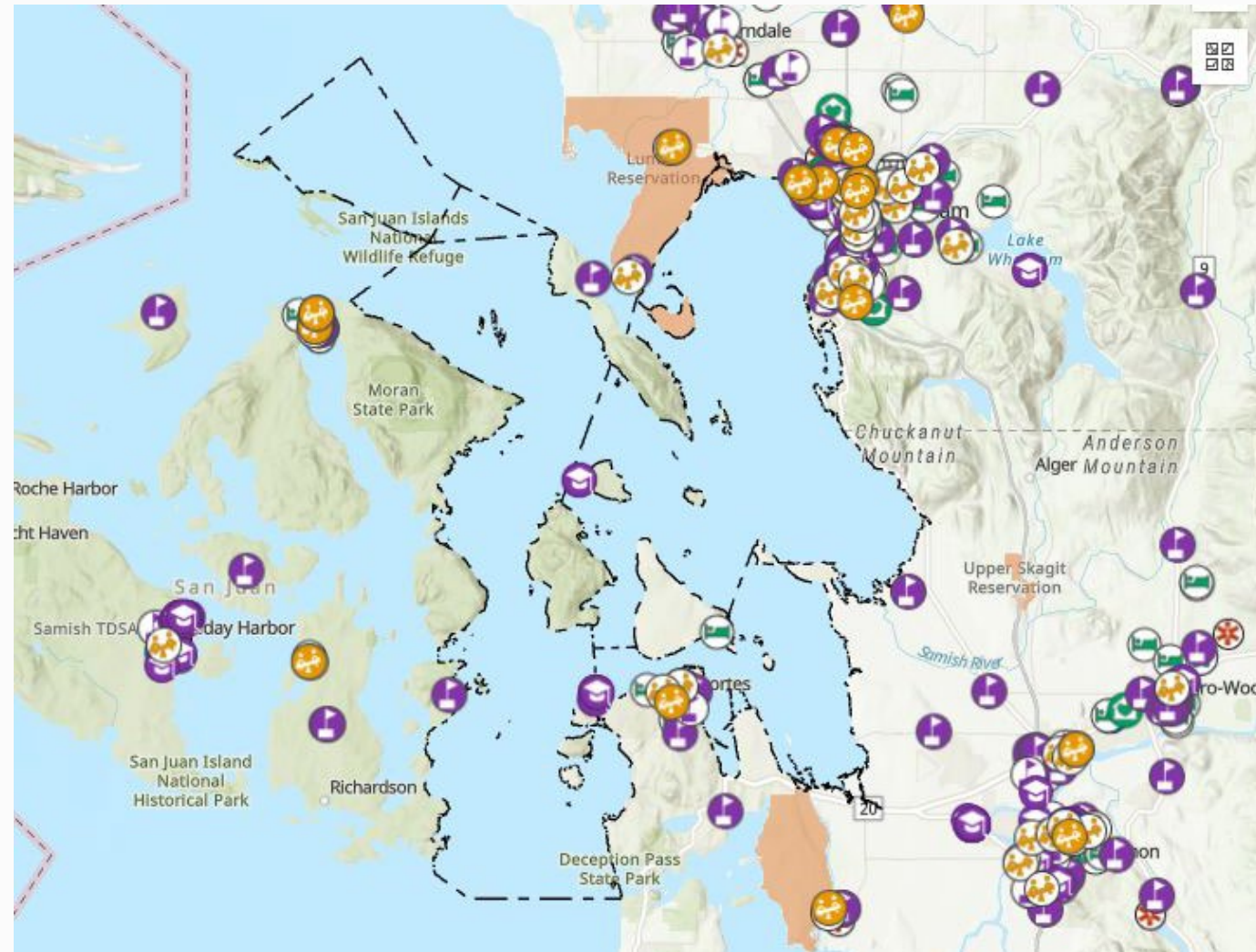
Seabird distribution with preliminary alternatives boundaries.

Priority Element: Air Quality



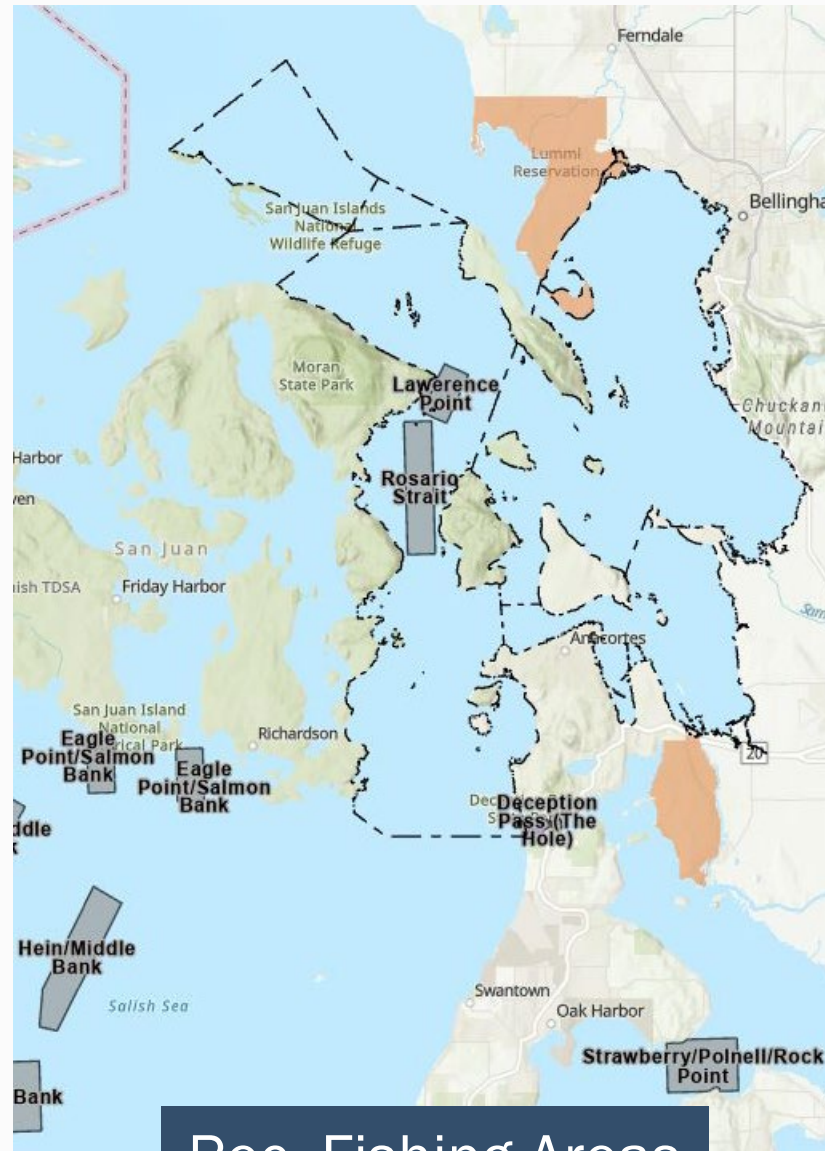
DOH EHD Map, Diesel Exhaust PM 2.5 Emissions, with preliminary alternatives.

Priority Element: Air Quality

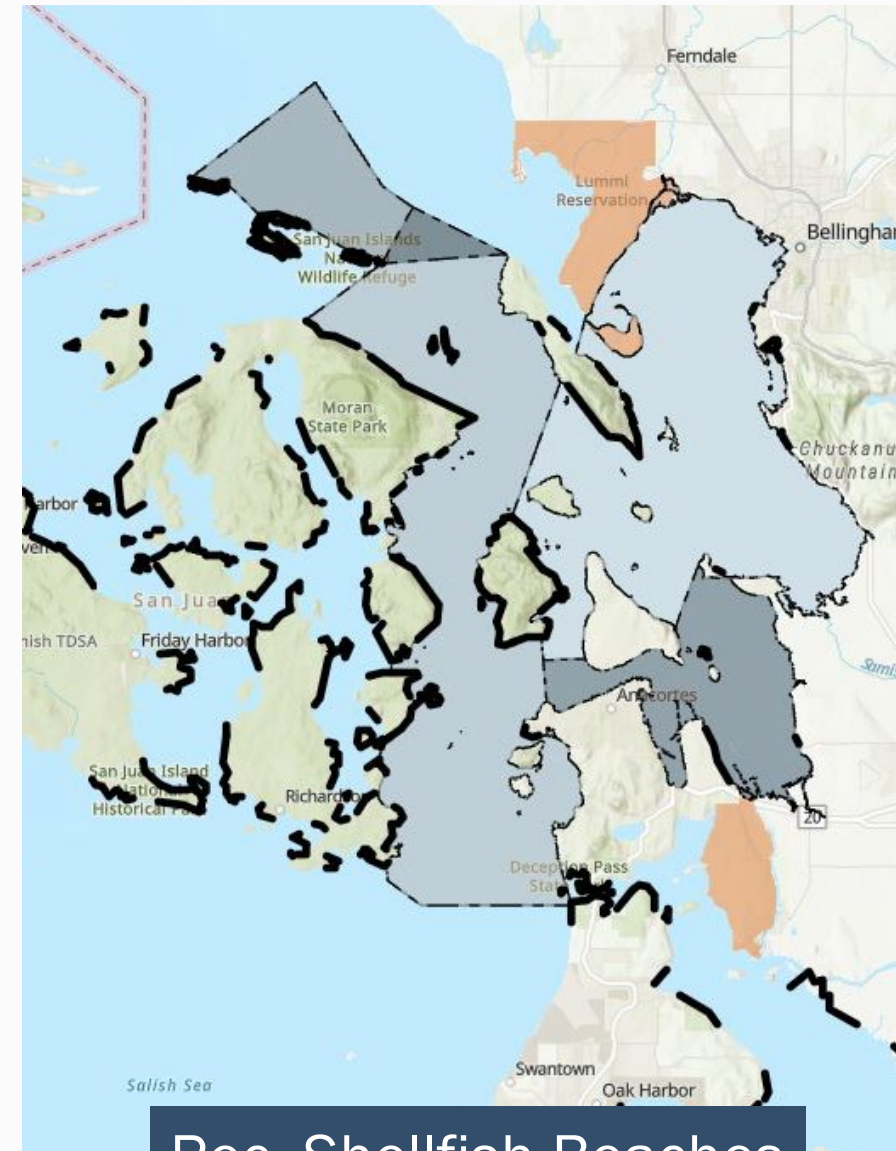


Sensitive populations data points with alternatives boundaries

Element to Assess: Recreation



Rec. Fishing Areas

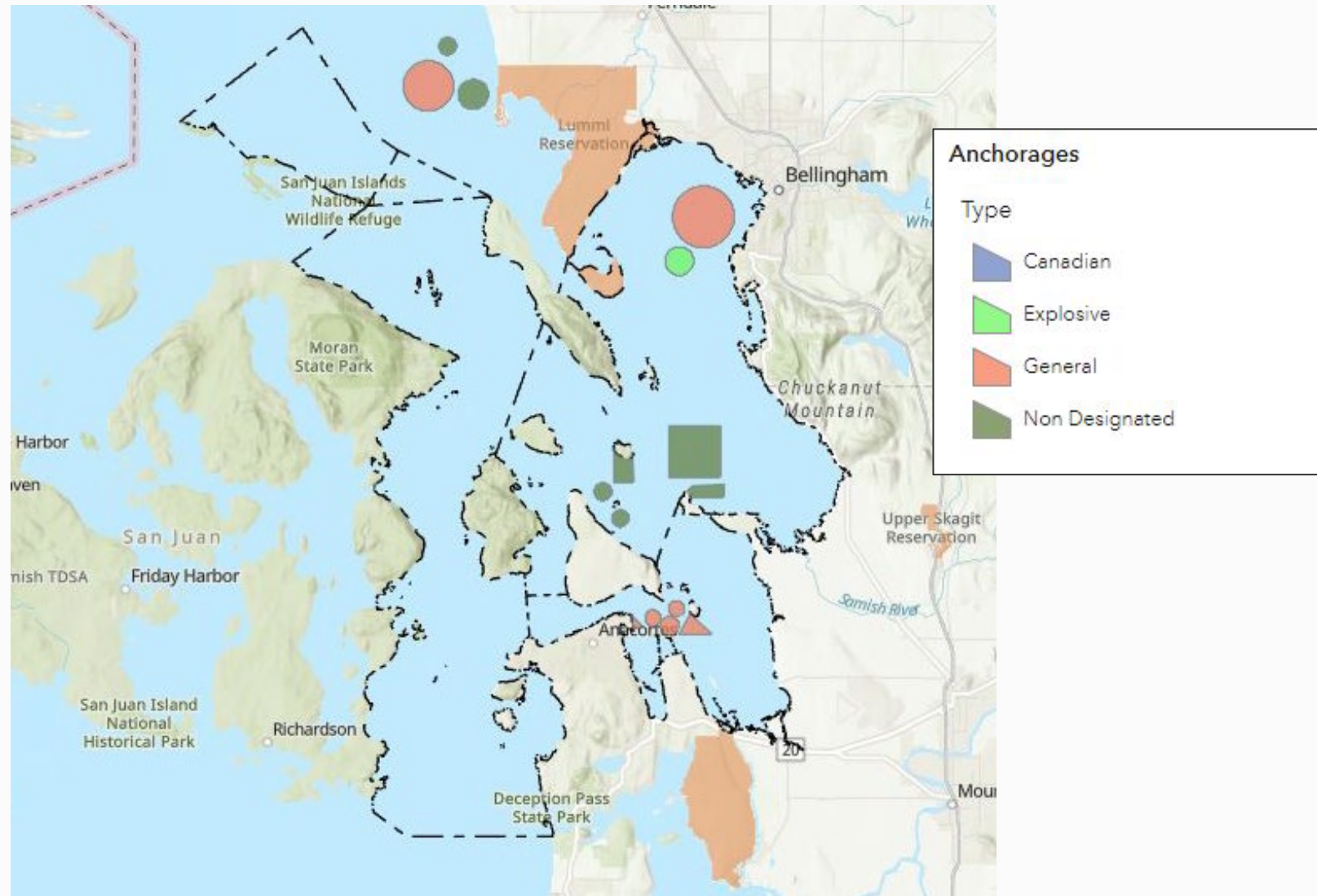


Rec. Shellfish Beaches

WDFW Major Fishing Areas map (left) and recreational shellfish beaches (right).

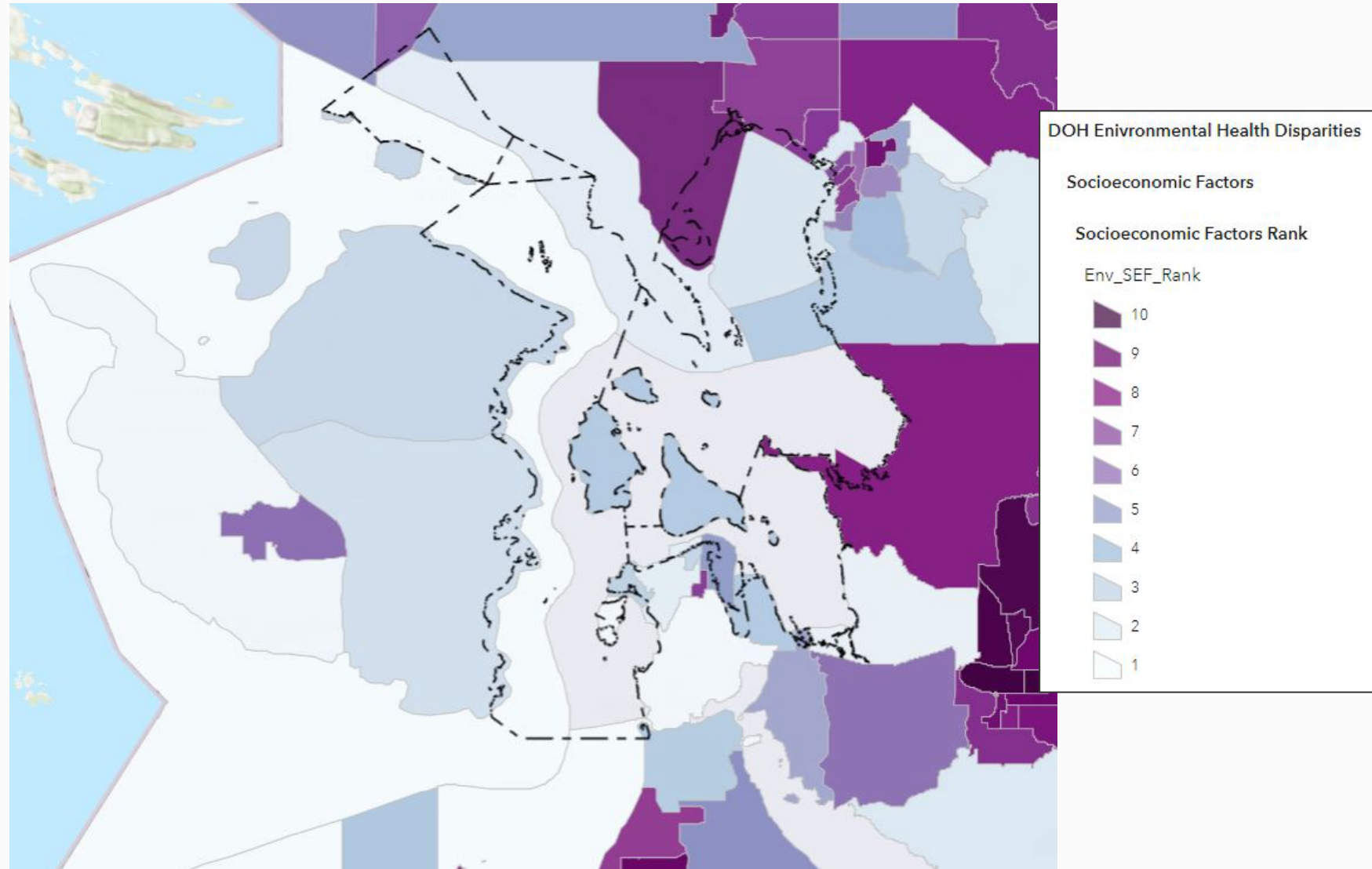


Element to Assess: Light, Glare, Aesthetics (+Others)



Compiled map of anchorages within the alternatives boundaries.

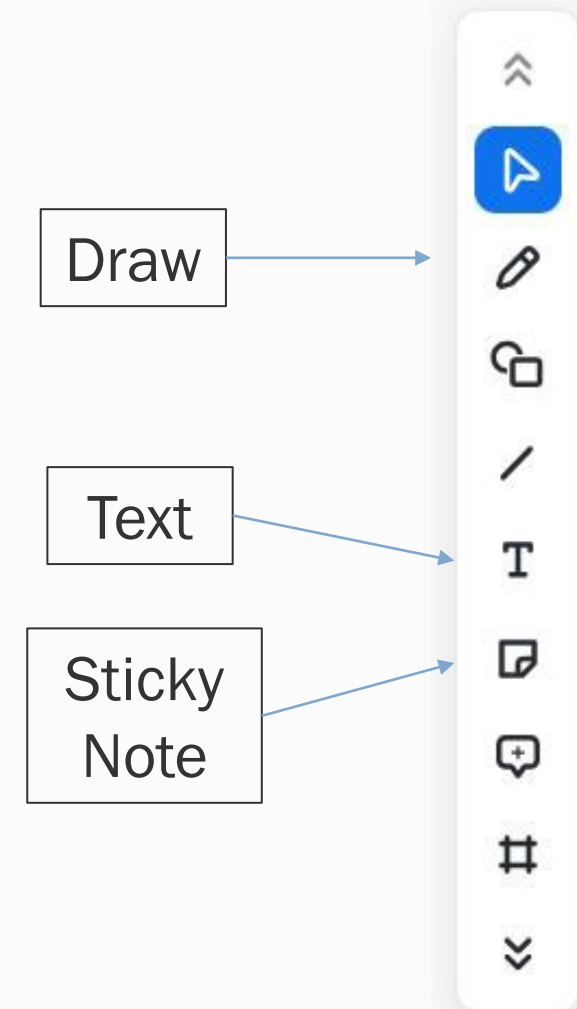
Integrated Throughout: Environmental Justice



DOH EHD Map, Socioeconomic Factors (combined)

Map Brainstorm

- **In the Room:** 15 minutes to walk around and add your thoughts to the maps
- **Online:** Directions for people attending via Zoom





Discussion

What information do YOU want to better understand potential impacts of this rulemaking?

What do you want us to know about this specific place and resources as we define our methodological approach?

What other information is important to you as we're defining methods for analysis?

A photograph of an orca breaching the surface of the ocean. The orca's head and back are visible above the water, with its tail fluke partially submerged. The water is a deep blue, and the background shows a hazy coastline under a light sky.

Next Steps, Upcoming Workshop

- **Workshop #8: EIS Methodology, Economic Analysis Overview**
 - Stakeholder Workshop: 7/10/24
 - Tribal Government Only Workshop: 7/16/24



Final Questions or Comments?

SEPA Point of Contact:

Haley Kennard, Tug Escort Environmental Analysis Coordinator
haley.kennard@ecy.wa.gov or (564) 233-5178

BPC Point of Contact:

Jaimie Bever, Executive Director
BeverJ@wsdot.wa.gov or
(206) 305-2296

